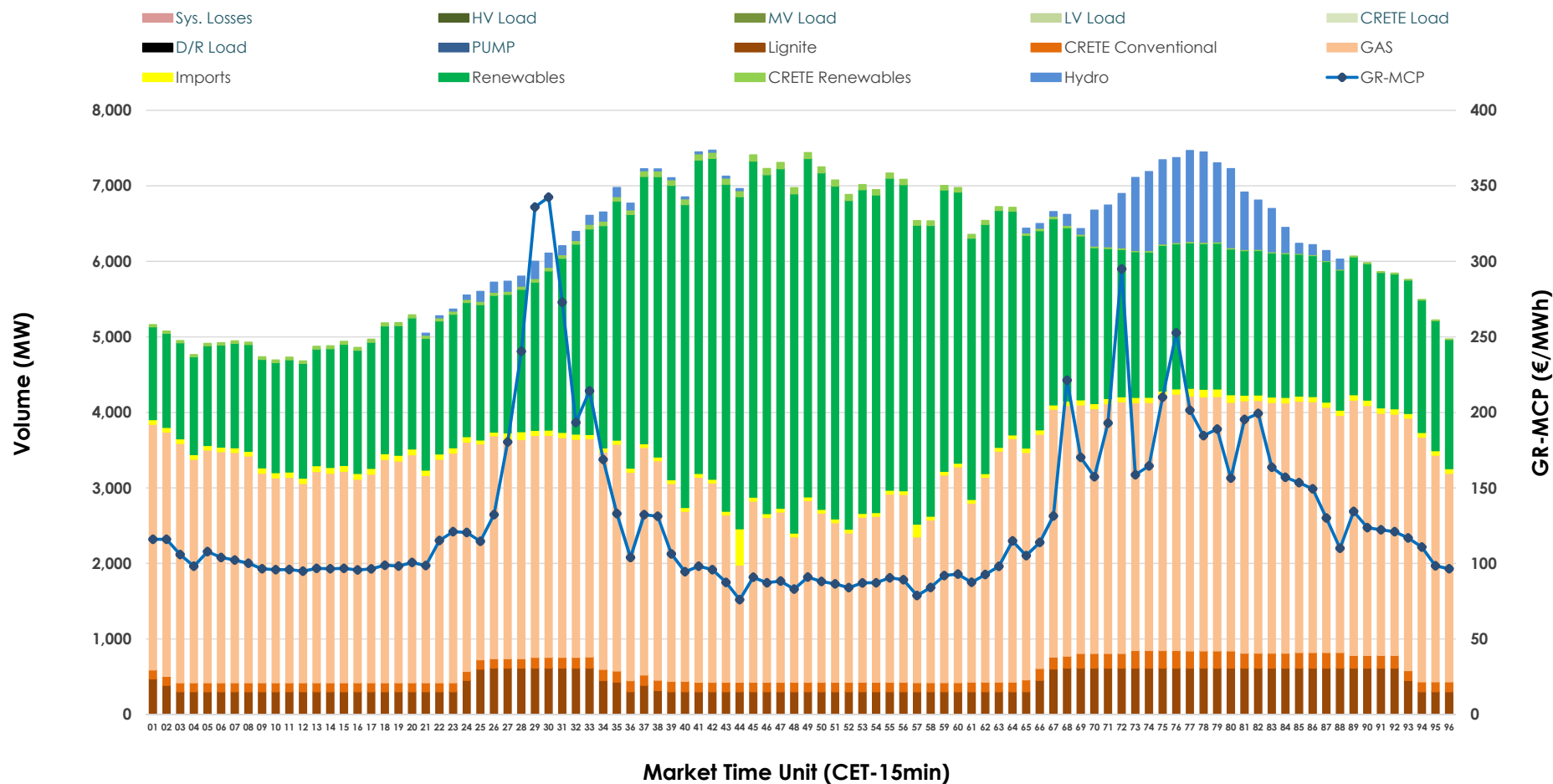


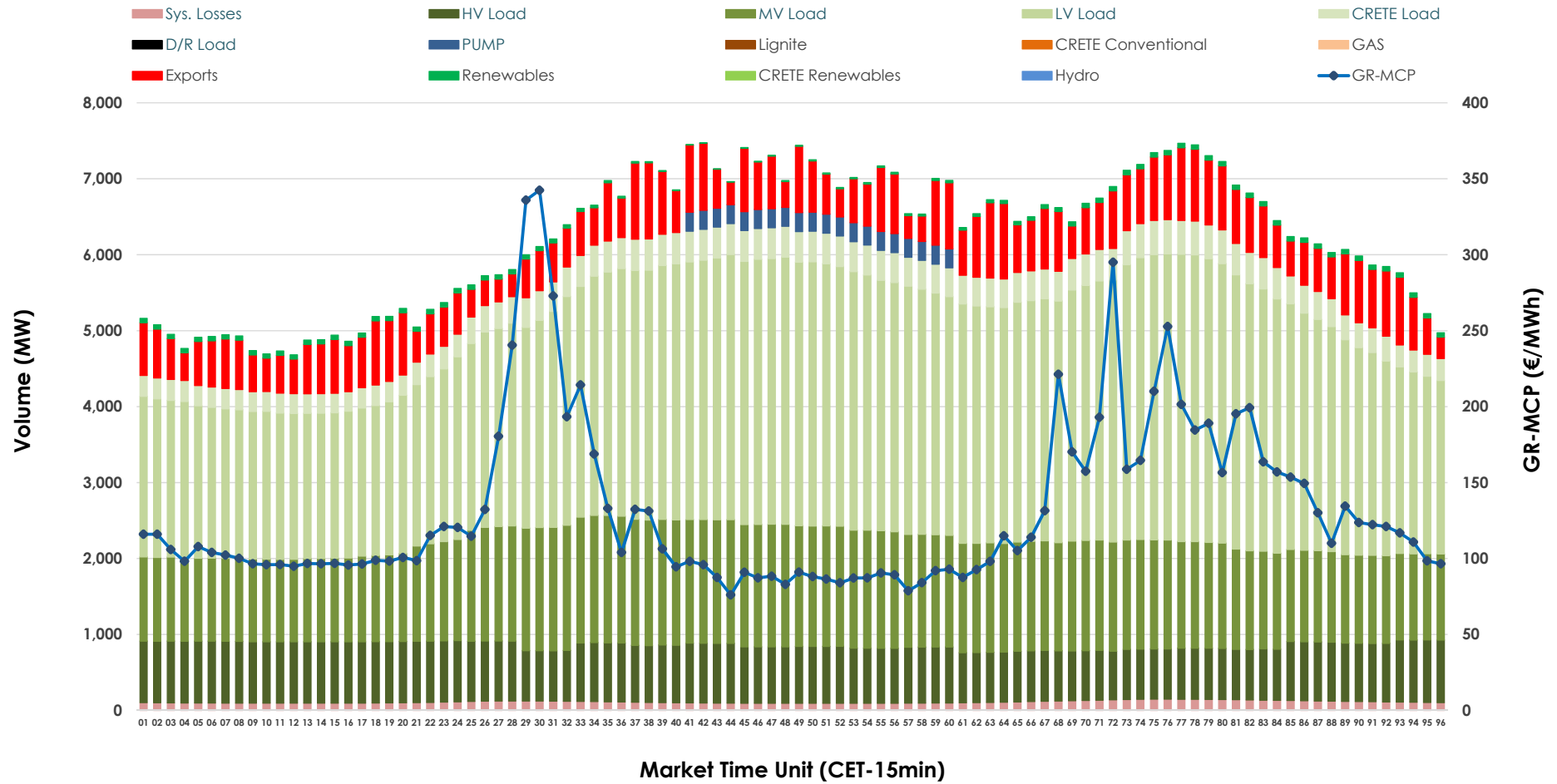


## Day-Ahead Market Outlook

16.10.2025 Day-Ahead Market - Sell



## 16.10.2025 Day-Ahead Market - Buy



### GR Bidding Zone Weekly Figures

Delivery Day	10.10	11.10	12.10	13.10	14.10	15.10	16.10
	↗ 20%	↘ -41%	↗ 7%	↗ 105%	↘ -3%	↗ 3%	↘ -17%
Avg.MCP (€/MWh)	122.49	72.37	77.41	158.35	153.56	158.21	131.30
Max.MCP (€/MWh)	274.24	153.30	219.32	459.08	561.15	491.13	342.46
Min.MCP (€/MWh)	17.39	-1.00	-3.81	0.20	0.00	0.01	76.01
	↘ -4%	↘ -2%	↘ -7%	↗ 8%	↗ 3%	↘ -1%	↗ 2%
Tot.Vol(GWh)	293.92	287.02	265.95	287.34	296.95	294.40	299.66

### Trades by Order Type

Delivery Day		10.10	11.10	12.10	13.10	14.10	15.10	16.10	
Ord Price Type		Sell & Buy Trades in (GWh) per Price Type							(%)
PPT	(S)	41.758	46.708	44.570	31.434	31.803	33.108	36.198	24.16%
HBD	(S)	62.268	60.154	55.366	57.223	59.731	55.887	60.347	40.28%
BLK	(S)	37.942	32.325	30.246	52.255	54.473	55.807	53.119	35.45%
CPL	(S)	4.991	4.322	2.791	2.758	2.466	2.400	0.164	0.11%
PPT	(B)	15.651	14.986	14.169	15.350	15.465	16.444	16.086	10.74%
HBD	(B)	123.519	118.981	108.813	121.458	124.679	124.771	124.904	83.36%
BLK	(B)	0.000	0.000	0.000	0.000	0.000	0.000	0.000	0.00%
CPL	(B)	7.789	9.542	9.991	6.862	8.328	5.987	8.838	5.90%
		Sell & Buy Orders Traded per Price Type							(%)
PPT	(S)	1464	1413	1285	1338	1338	1352	1264	32.09%
HBD	(S)	2600	2110	2070	2568	2507	2641	2657	67.45%
BLK	(S)	15	9	15	26	23	20	18	0.46%
PPT	(B)	2271	2277	2246	2259	2274	2319	2306	36.05%
HBD	(B)	3854	4135	4000	3961	4076	4032	4091	63.95%
BLK	(B)	0	0	0	0	0	0	0	0.00%

<b>MCP</b>	Market Clearing Price (€/MWh)
<b>PPT</b>	Priority Price-Taking
<b>HBD</b>	Hybrid
<b>BLK</b>	Block
<b>CPL</b>	Market Coupling Flow

### Trade's Volume Mix

		Sell - MWh	Buy - MWh	
Lignite	(6.8%)	10,259	0	(0.0%)
Crete Conv.	(2.3%)	3,518	0	(0.0%)
Gas	(46.3%)	69,316	0	(0.0%)
Hydro	(2.6%)	3,916	0	(0.0%)
Imports	(1.1%)	1,673		
RES	(40.1%)	60,136	1,045	(0.7%)
Crete RES	(0.7%)	1,010	0	(0.0%)
HV Load	(0.0%)	0	17,928	(12.0%)
MV Load	(0.0%)	0	33,084	(22.1%)
LV Load	(0.0%)	0	69,728	(46.5%)
Crete Load	(0.0%)	0	8,648	(5.8%)
Pumping	(0.0%)	0	1,250	(0.8%)
Exports			15,486	(10.3%)
Sys.Losses	(0.0%)	0	2,659	(1.8%)
D/R Load	(0.0%)	0	0	(0.0%)

