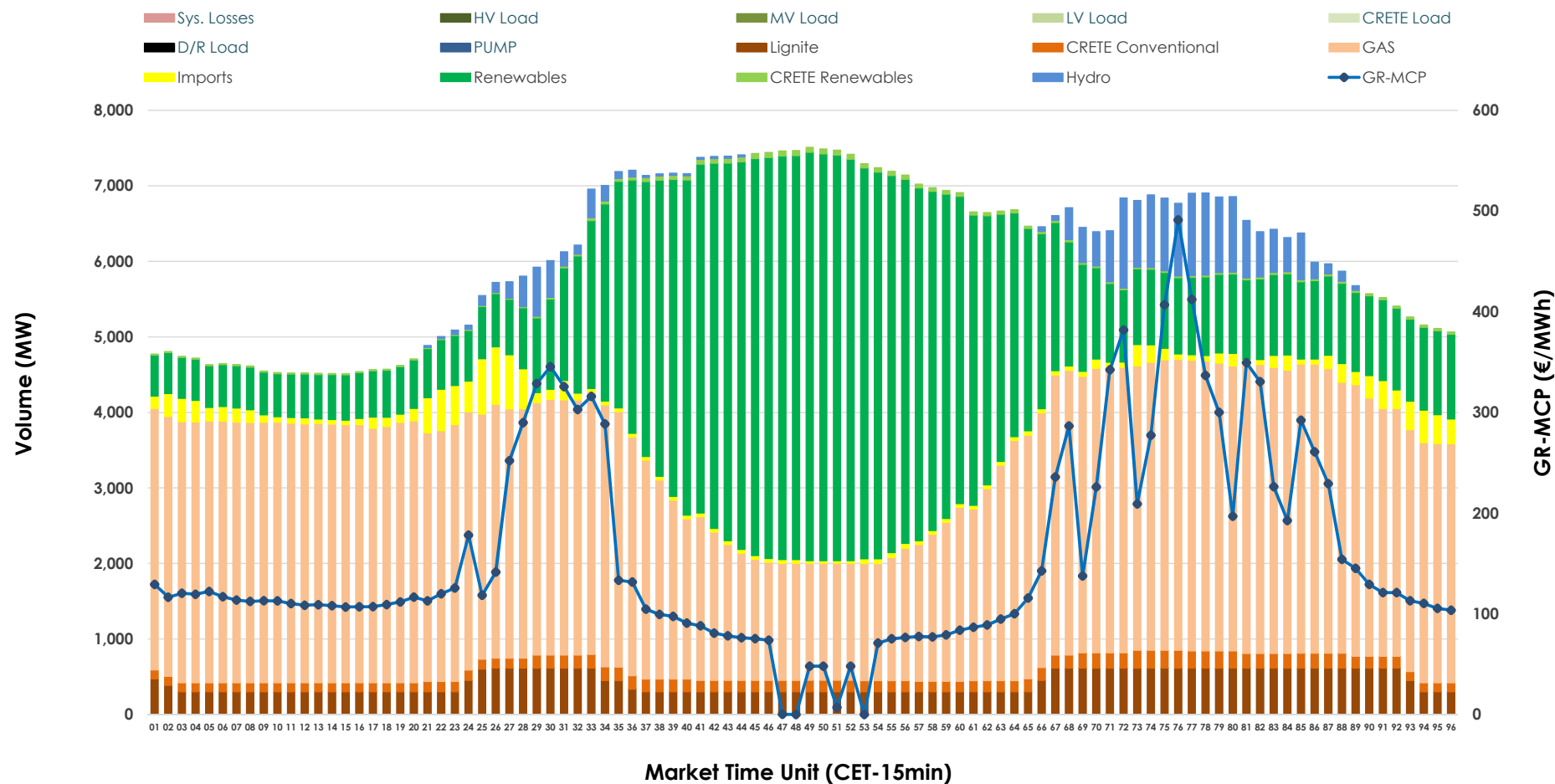


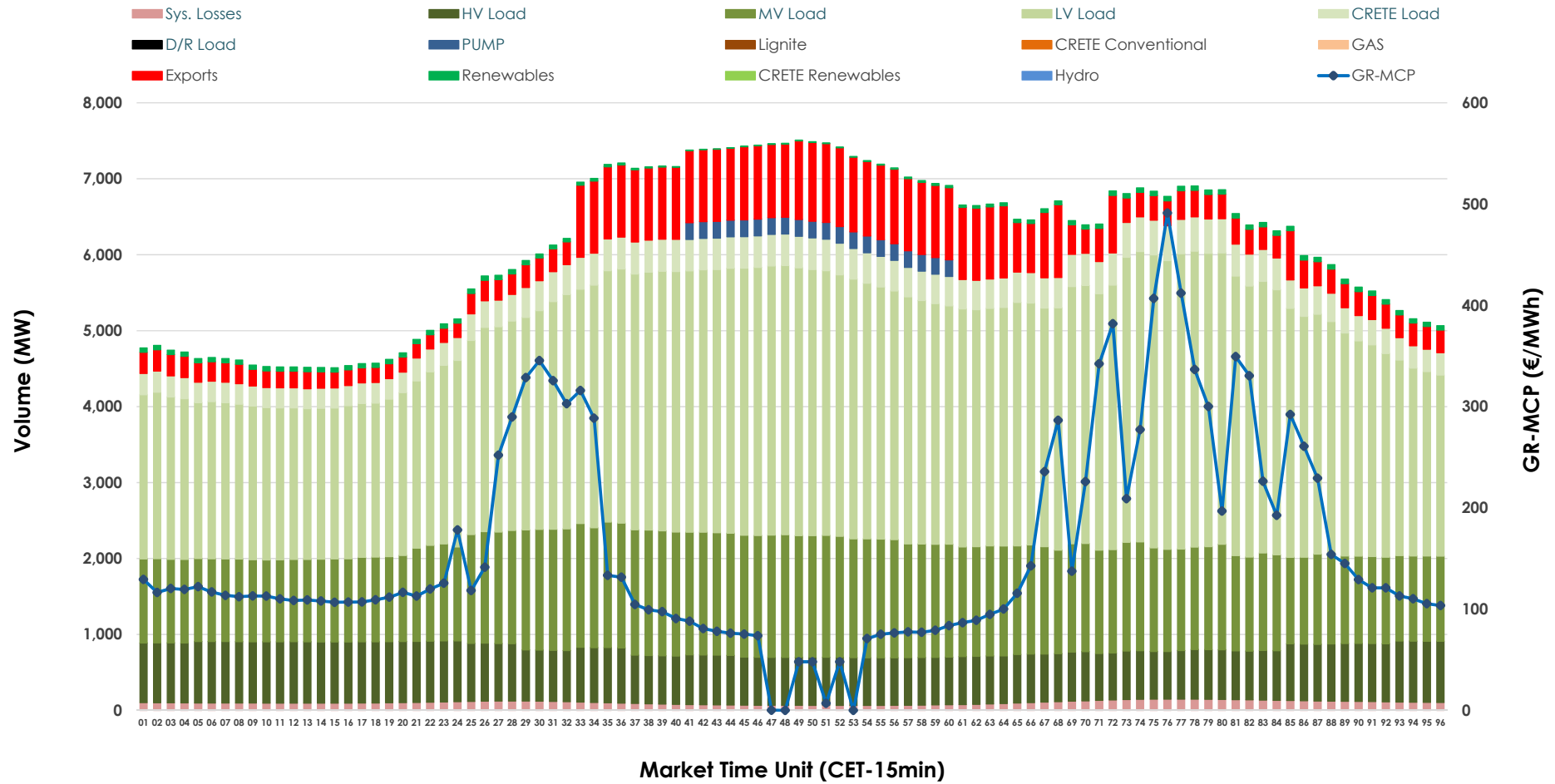


## Day-Ahead Market Outlook

15.10.2025 Day-Ahead Market - Sell



## 15.10.2025 Day-Ahead Market - Buy



### GR Bidding Zone Weekly Figures

Delivery Day	09.10	10.10	11.10	12.10	13.10	14.10	15.10
	📉 -13%	📈 20%	📉 -41%	📈 7%	📈 105%	📉 -3%	📈 3%
Avg.MCP (€/MWh)	102.26	122.49	72.37	77.41	158.35	153.56	158.21
Max.MCP (€/MWh)	235.21	274.24	153.30	219.32	459.08	561.15	491.13
Min.MCP (€/MWh)	0.00	17.39	-1.00	-3.81	0.20	0.00	0.01
	📉 -4%	📉 -4%	📉 -2%	📉 -7%	📈 8%	📈 3%	📉 -1%
Tot.Vol(GWh)	307.56	293.92	287.02	265.95	287.34	296.95	294.40

### Trades by Order Type

Delivery Day		09.10	10.10	11.10	12.10	13.10	14.10	15.10	
Ord Price Type		Sell & Buy Trades in (GWh) per Price Type							(%)
PPT	(S)	41.781	41.758	46.708	44.570	31.434	31.803	33.108	22.49%
HBD	(S)	66.409	62.268	60.154	55.366	57.223	59.731	55.887	37.97%
BLK	(S)	44.221	37.942	32.325	30.246	52.255	54.473	55.807	37.91%
CPL	(S)	1.371	4.991	4.322	2.791	2.758	2.466	2.400	1.63%
PPT	(B)	16.340	15.651	14.986	14.169	15.350	15.465	16.444	11.17%
HBD	(B)	127.211	123.519	118.981	108.813	121.458	124.679	124.771	84.76%
BLK	(B)	0.000	0.000	0.000	0.000	0.000	0.000	0.000	0.00%
CPL	(B)	10.230	7.789	9.542	9.991	6.862	8.328	5.987	4.07%
		Sell & Buy Orders Traded per Price Type							(%)
PPT	(S)	1378	1464	1413	1285	1338	1338	1352	33.69%
HBD	(S)	2477	2600	2110	2070	2568	2507	2641	65.81%
BLK	(S)	13	15	9	15	26	23	20	0.50%
PPT	(B)	2284	2271	2277	2246	2259	2274	2319	36.51%
HBD	(B)	4059	3854	4135	4000	3961	4076	4032	63.49%
BLK	(B)	0	0	0	0	0	0	0	0.00%

<b>MCP</b>	Market Clearing Price (€/MWh)
<b>PPT</b>	Priority Price-Taking
<b>HBD</b>	Hybrid
<b>BLK</b>	Block
<b>CPL</b>	Market Coupling Flow

### Trade's Volume Mix

		Sell - MWh	Buy - MWh	
Lignite	(7.0%)	10,250	0	(0.0%)
Crete Conv.	(2.6%)	3,763	0	(0.0%)
Gas	(49.9%)	73,527	0	(0.0%)
Hydro	(3.1%)	4,557	0	(0.0%)
Imports	(2.6%)	3,804		
RES	(34.3%)	50,528	1,023	(0.7%)
Crete RES	(0.5%)	773	0	(0.0%)
HV Load	(0.0%)	0	16,940	(11.5%)
MV Load	(0.0%)	0	32,644	(22.2%)
LV Load	(0.0%)	0	71,287	(48.4%)
Crete Load	(0.0%)	0	8,810	(6.0%)
Pumping	(0.0%)	0	1,100	(0.7%)
Exports			12,925	(8.8%)
Sys.Losses	(0.0%)	0	2,473	(1.7%)
D/R Load	(0.0%)	0	0	(0.0%)

