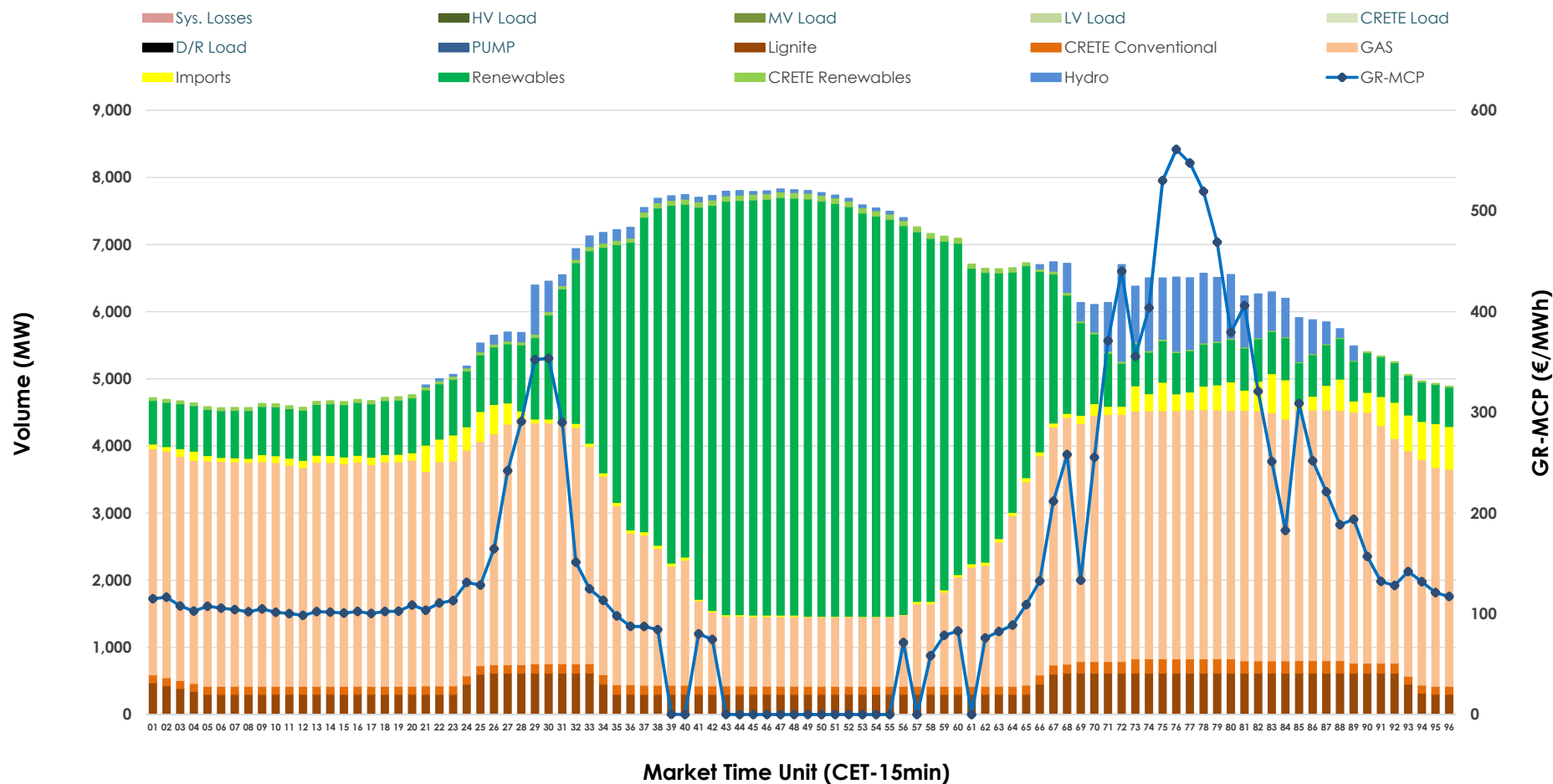


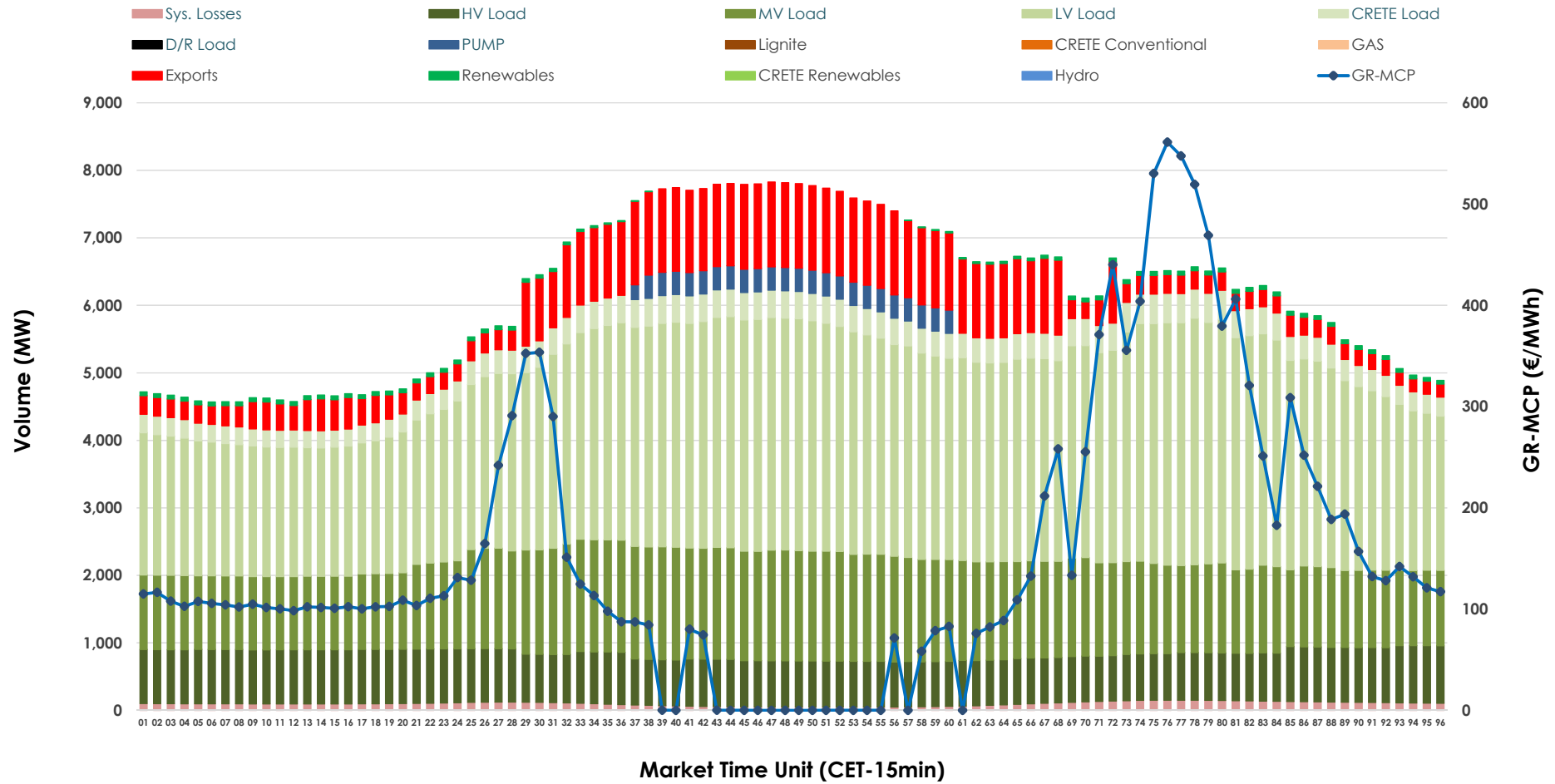


Day-Ahead Market Outlook

14.10.2025 Day-Ahead Market - Sell



14.10.2025 Day-Ahead Market - Buy



GR Bidding Zone Weekly Figures

Delivery Day	08.10	09.10	10.10	11.10	12.10	13.10	14.10
	↗ 25%	↘ -13%	↗ 20%	↘ -41%	↗ 7%	↗ 105%	↘ -3%
Avg.MCP (€/MWh)	117.26	102.26	122.49	72.37	77.41	158.35	153.56
Max.MCP (€/MWh)	264.90	235.21	274.24	153.30	219.32	459.08	561.15
Min.MCP (€/MWh)	85.50	0.00	17.39	-1.00	-3.81	0.20	0.00
	↘ -3%	↘ -4%	↘ -4%	↘ -2%	↘ -7%	↗ 8%	↗ 3%
Tot.Vol(GWh)	319.75	307.56	293.92	287.02	265.95	287.34	296.95

Trades by Order Type

Delivery Day		08.10	09.10	10.10	11.10	12.10	13.10	14.10	
Ord Price Type		Sell & Buy Trades in (GWh) per Price Type							(%)
PPT	(S)	40.771	41.781	41.758	46.708	44.570	31.434	31.803	21.42%
HBD	(S)	61.437	66.409	62.268	60.154	55.366	57.223	59.731	40.23%
BLK	(S)	55.227	44.221	37.942	32.325	30.246	52.255	54.473	36.69%
CPL	(S)	2.440	1.371	4.991	4.322	2.791	2.758	2.466	1.66%
PPT	(B)	15.818	16.340	15.651	14.986	14.169	15.350	15.465	10.42%
HBD	(B)	134.389	127.211	123.519	118.981	108.813	121.458	124.679	83.97%
BLK	(B)	0.000	0.000	0.000	0.000	0.000	0.000	0.000	0.00%
CPL	(B)	9.669	10.230	7.789	9.542	9.991	6.862	8.328	5.61%
		Sell & Buy Orders Traded per Price Type							(%)
PPT	(S)	1337	1378	1464	1413	1285	1338	1338	34.59%
HBD	(S)	2511	2477	2600	2110	2070	2568	2507	64.81%
BLK	(S)	23	13	15	9	15	26	23	0.59%
PPT	(B)	2266	2284	2271	2277	2246	2259	2274	35.81%
HBD	(B)	4074	4059	3854	4135	4000	3961	4076	64.19%
BLK	(B)	0	0	0	0	0	0	0	0.00%

MCP	Market Clearing Price (€/MWh)
PPT	Priority Price-Taking
HBD	Hybrid
BLK	Block
CPL	Market Coupling Flow

Trade's Volume Mix

		Sell - MWh	Buy - MWh	
Lignite	(6.9%)	10,249	0	(0.0%)
Crete Conv.	(2.3%)	3,366	0	(0.0%)
Gas	(46.0%)	68,234	0	(0.0%)
Hydro	(3.3%)	4,874	0	(0.0%)
Imports	(2.7%)	4,071		
RES	(38.1%)	56,545	950	(0.6%)
Crete RES	(0.8%)	1,134	0	(0.0%)
HV Load	(0.0%)	0	17,785	(12.0%)
MV Load	(0.0%)	0	32,851	(22.1%)
LV Load	(0.0%)	0	68,091	(45.9%)
Crete Load	(0.0%)	0	8,506	(5.7%)
Pumping	(0.0%)	0	2,039	(1.4%)
Exports			15,887	(10.7%)
Sys.Losses	(0.0%)	0	2,364	(1.6%)
D/R Load	(0.0%)	0	0	(0.0%)

