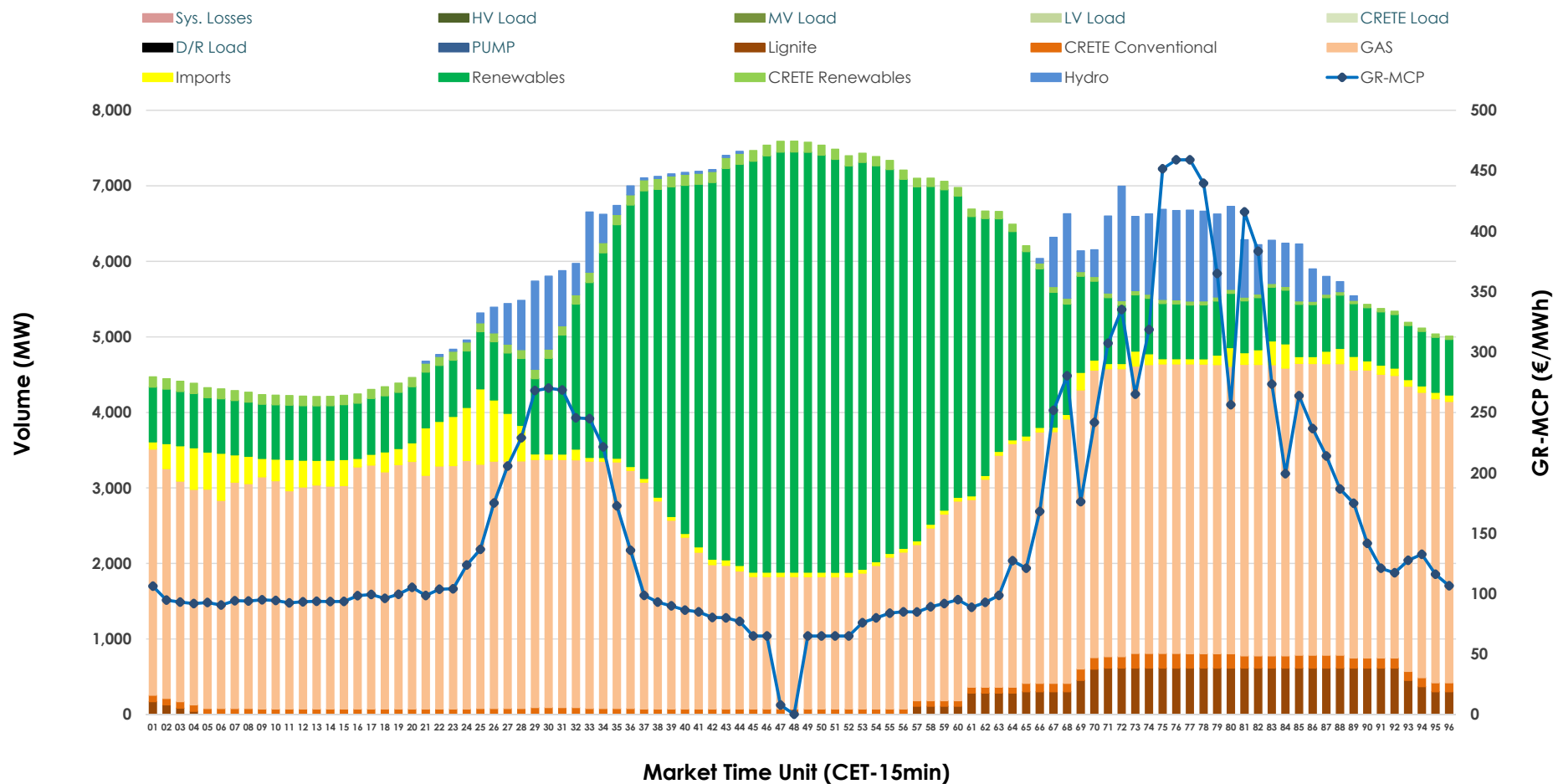


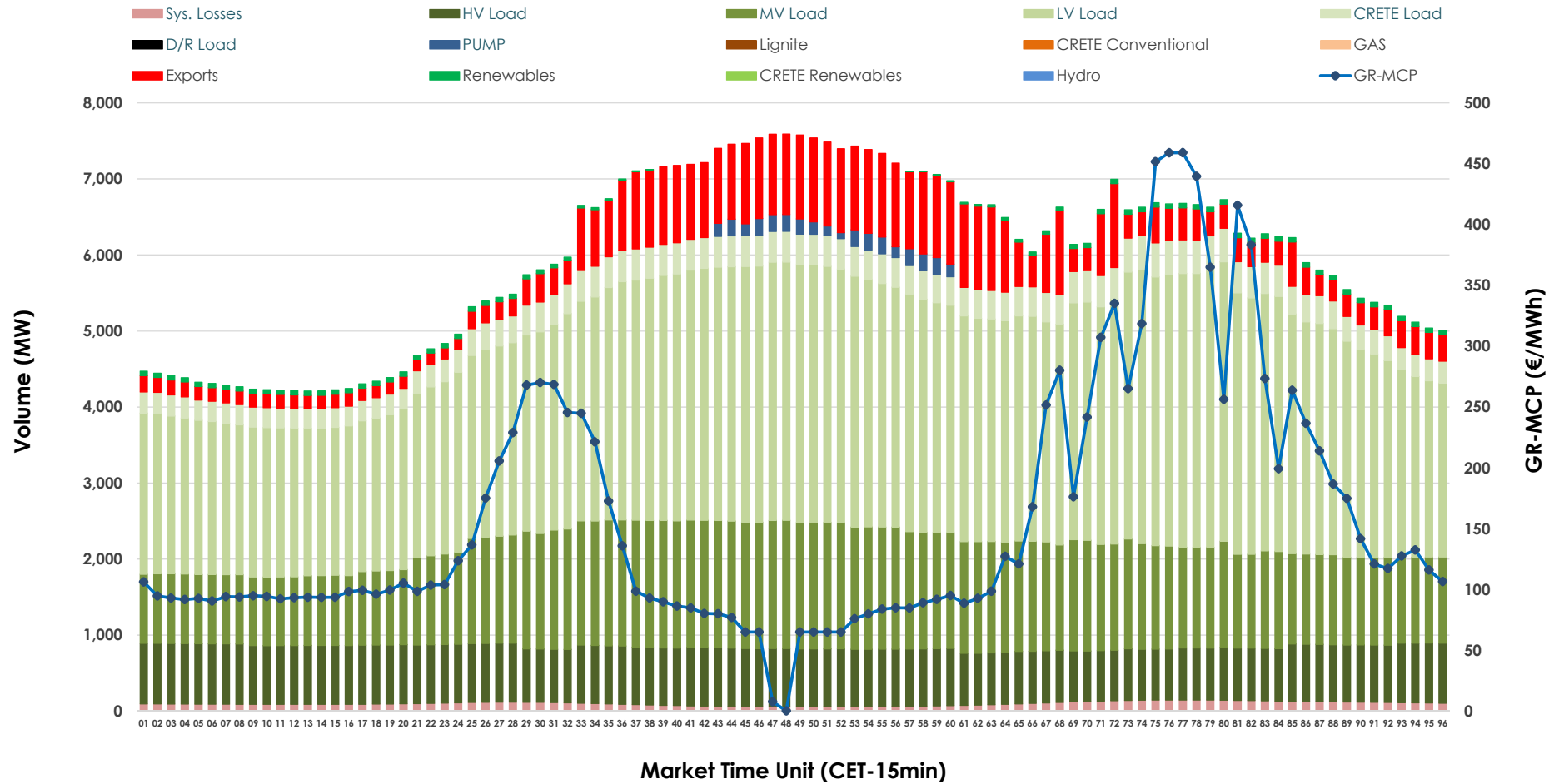


Day-Ahead Market Outlook

13.10.2025 Day-Ahead Market - Sell



13.10.2025 Day-Ahead Market - Buy



GR Bidding Zone Weekly Figures

Delivery Day	07.10	08.10	09.10	10.10	11.10	12.10	13.10
	📉 -28%	📈 25%	📉 -13%	📈 20%	📉 -41%	📈 7%	📈 105%
Avg.MCP (€/MWh)	93.55	117.26	102.26	122.49	72.37	77.41	158.35
Max.MCP (€/MWh)	287.19	264.90	235.21	274.24	153.30	219.32	459.08
Min.MCP (€/MWh)	0.00	85.50	0.00	17.39	-1.00	-3.81	0.20
	📈 8%	📉 -3%	📉 -4%	📉 -4%	📉 -2%	📉 -7%	📈 8%
Tot.Vol(GWh)	330.34	319.75	307.56	293.92	287.02	265.95	287.34

Trades by Order Type

Delivery Day		07.10	08.10	09.10	10.10	11.10	12.10	13.10	
Ord Price Type		Sell & Buy Trades in (GWh) per Price Type							(%)
PPT	(S)	50.257	40.771	41.781	41.758	46.708	44.570	31.434	21.88%
HBD	(S)	65.814	61.437	66.409	62.268	60.154	55.366	57.223	39.83%
BLK	(S)	49.081	55.227	44.221	37.942	32.325	30.246	52.255	36.37%
CPL	(S)	0.016	2.440	1.371	4.991	4.322	2.791	2.758	1.92%
PPT	(B)	15.499	15.818	16.340	15.651	14.986	14.169	15.350	10.68%
HBD	(B)	131.393	134.389	127.211	123.519	118.981	108.813	121.458	84.54%
BLK	(B)	0.000	0.000	0.000	0.000	0.000	0.000	0.000	0.00%
CPL	(B)	18.276	9.669	10.230	7.789	9.542	9.991	6.862	4.78%
		Sell & Buy Orders Traded per Price Type							(%)
PPT	(S)	1398	1337	1378	1464	1413	1285	1338	34.03%
HBD	(S)	2385	2511	2477	2600	2110	2070	2568	65.31%
BLK	(S)	19	23	13	15	9	15	26	0.66%
PPT	(B)	2247	2266	2284	2271	2277	2246	2259	36.32%
HBD	(B)	4202	4074	4059	3854	4135	4000	3961	63.68%
BLK	(B)	0	0	0	0	0	0	0	0.00%

MCP	Market Clearing Price (€/MWh)
PPT	Priority Price-Taking
HBD	Hybrid
BLK	Block
CPL	Market Coupling Flow

Trade's Volume Mix

		Sell - MWh	Buy - MWh	
Lignite	(3.3%)	4,809	0	(0.0%)
Crete Conv.	(1.7%)	2,447	0	(0.0%)
Gas	(51.1%)	73,448	0	(0.0%)
Hydro	(4.3%)	6,198	0	(0.0%)
Imports	(3.2%)	4,582		
RES	(34.6%)	49,736	942	(0.7%)
Crete RES	(1.7%)	2,450	0	(0.0%)
HV Load	(0.0%)	0	17,868	(12.4%)
MV Load	(0.0%)	0	32,002	(22.3%)
LV Load	(0.0%)	0	67,740	(47.1%)
Crete Load	(0.0%)	0	8,632	(6.0%)
Pumping	(0.0%)	0	851	(0.6%)
Exports			13,254	(9.2%)
Sys.Losses	(0.0%)	0	2,382	(1.7%)
D/R Load	(0.0%)	0	0	(0.0%)

