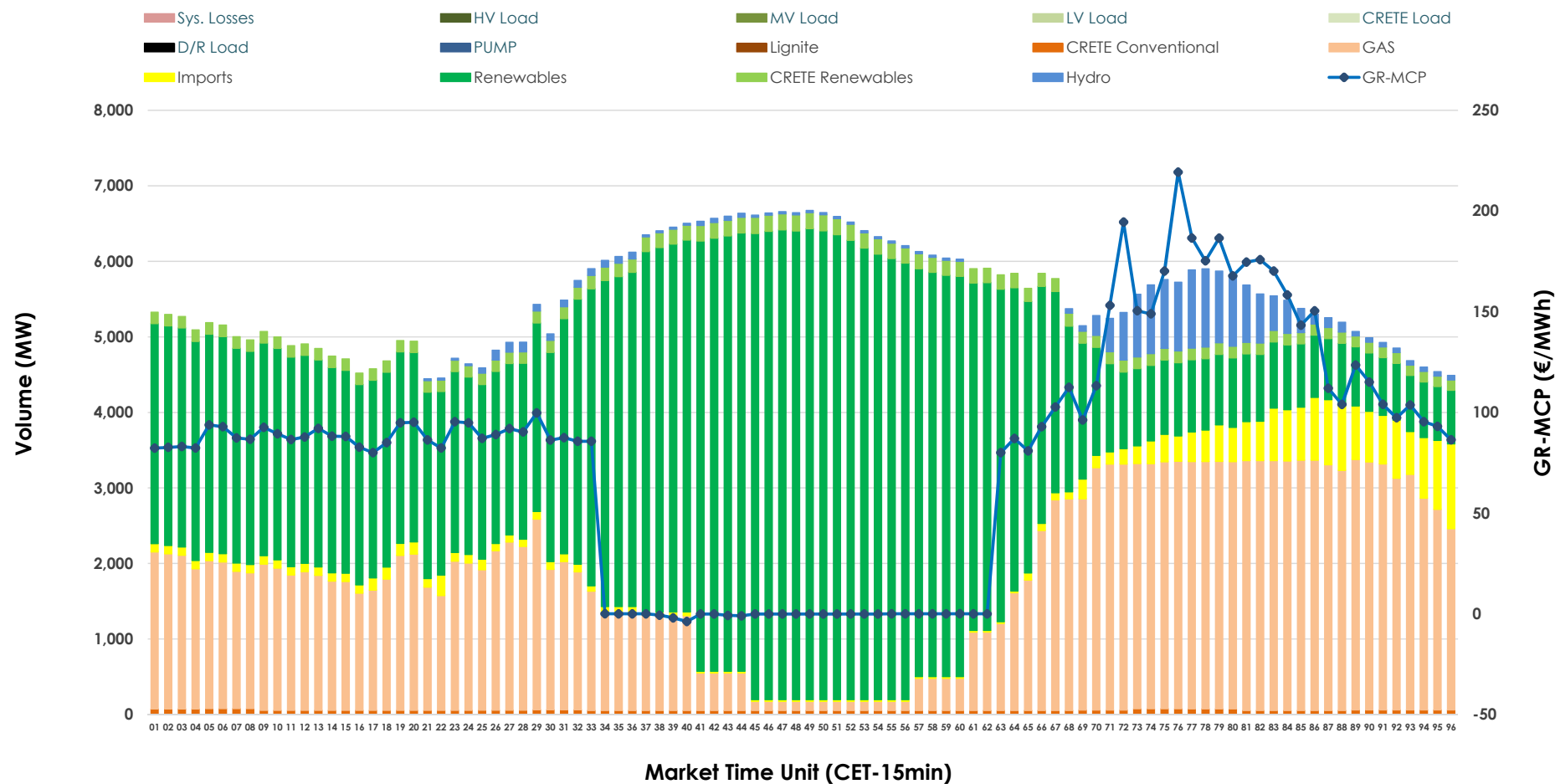


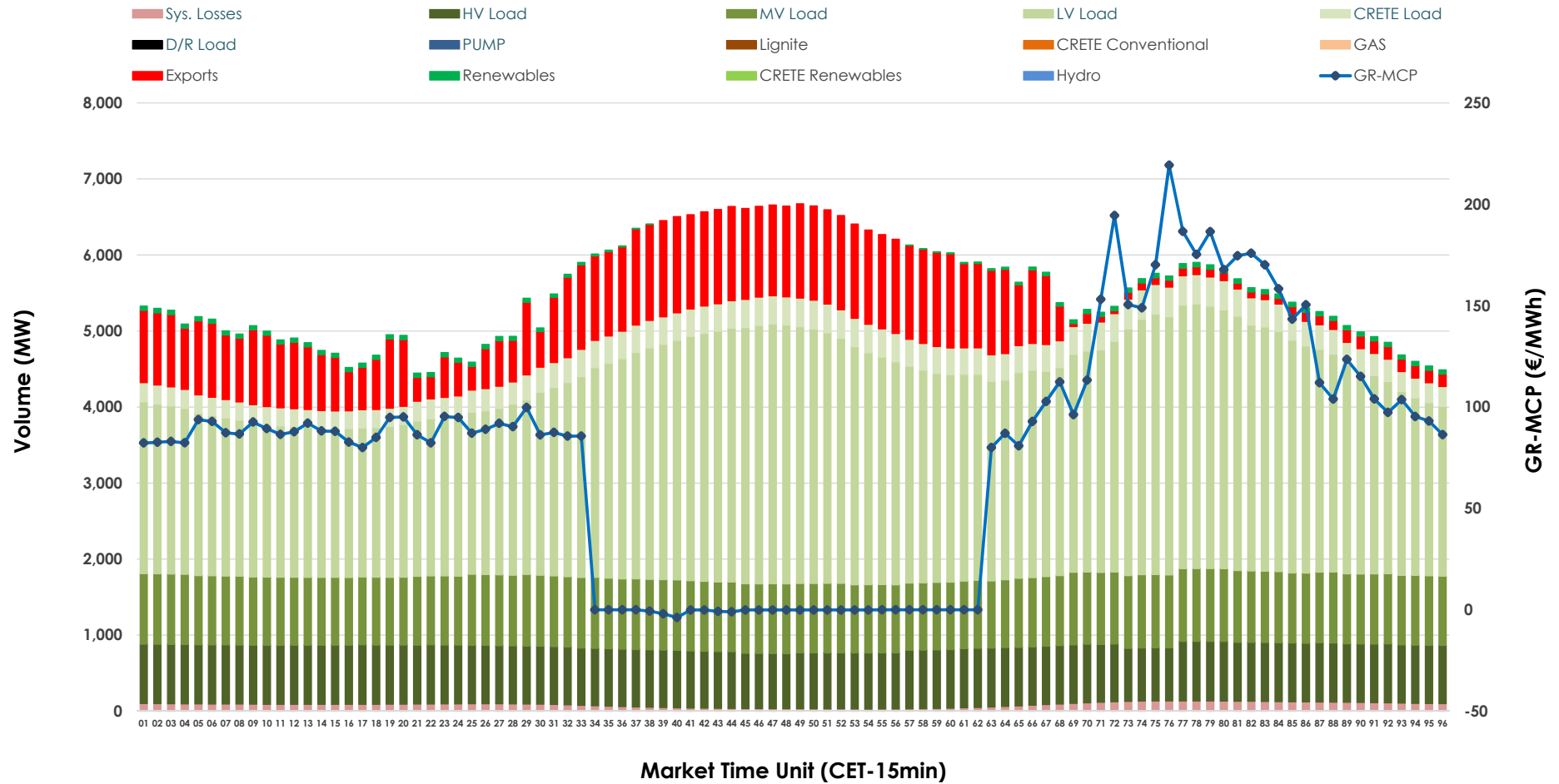


## Day-Ahead Market Outlook

12.10.2025 Day-Ahead Market - Sell



## 12.10.2025 Day-Ahead Market - Buy



### GR Bidding Zone Weekly Figures

Delivery Day	06.10	07.10	08.10	09.10	10.10	11.10	12.10
	↑ 107%	↓ -28%	↑ 25%	↓ -13%	↑ 20%	↓ -41%	↑ 7%
Avg.MCP (€/MWh)	129.31	93.55	117.26	102.26	122.49	72.37	77.41
Max.MCP (€/MWh)	325.39	287.19	264.90	235.21	274.24	153.30	219.32
Min.MCP (€/MWh)	52.91	0.00	85.50	0.00	17.39	-1.00	-3.81
	↑ 15%	↑ 8%	↓ -3%	↓ -4%	↓ -4%	↓ -2%	↓ -7%
Tot.Vol(GWh)	305.05	330.34	319.75	307.56	293.92	287.02	265.95

### Trades by Order Type

Delivery Day		06.10	07.10	08.10	09.10	10.10	11.10	12.10	
Ord Price Type		Sell & Buy Trades in (GWh) per Price Type							(%)
PPT	(S)	46.128	50.257	40.771	41.781	41.758	46.708	44.570	33.52%
HBD	(S)	58.187	65.814	61.437	66.409	62.268	60.154	55.366	41.64%
BLK	(S)	47.363	49.081	55.227	44.221	37.942	32.325	30.246	22.75%
CPL	(S)	0.848	0.016	2.440	1.371	4.991	4.322	2.791	2.10%
PPT	(B)	14.579	15.499	15.818	16.340	15.651	14.986	14.169	10.66%
HBD	(B)	125.258	131.393	134.389	127.211	123.519	118.981	108.813	81.83%
BLK	(B)	0.000	0.000	0.000	0.000	0.000	0.000	0.000	0.00%
CPL	(B)	12.689	18.276	9.669	10.230	7.789	9.542	9.991	7.51%
		Sell & Buy Orders Traded per Price Type							(%)
PPT	(S)	1353	1398	1337	1378	1464	1413	1285	38.13%
HBD	(S)	2474	2385	2511	2477	2600	2110	2070	61.42%
BLK	(S)	25	19	23	13	15	9	15	0.45%
PPT	(B)	2212	2247	2266	2284	2271	2277	2246	35.96%
HBD	(B)	3956	4202	4074	4059	3854	4135	4000	64.04%
BLK	(B)	0	0	0	0	0	0	0	0.00%

<b>MCP</b>	Market Clearing Price (€/MWh)
<b>PPT</b>	Priority Price-Taking
<b>HBD</b>	Hybrid
<b>BLK</b>	Block
<b>CPL</b>	Market Coupling Flow

### Trade's Volume Mix

		Sell - MWh	Buy - MWh	
Lignite	(0.0%)	0	0	(0.0%)
Crete Conv.	(1.1%)	1,414	0	(0.0%)
Gas	(33.8%)	44,955	0	(0.0%)
Hydro	(2.7%)	3,637	0	(0.0%)
Imports	(3.9%)	5,231		
RES	(55.4%)	73,694	934	(0.7%)
Crete RES	(3.0%)	4,042	0	(0.0%)
HV Load	(0.0%)	0	18,307	(13.8%)
MV Load	(0.0%)	0	22,049	(16.6%)
LV Load	(0.0%)	0	64,853	(48.8%)
Crete Load	(0.0%)	0	7,730	(5.8%)
Pumping	(0.0%)	0	0	(0.0%)
Exports			17,088	(12.9%)
Sys.Losses	(0.0%)	0	2,011	(1.5%)
D/R Load	(0.0%)	0	0	(0.0%)

