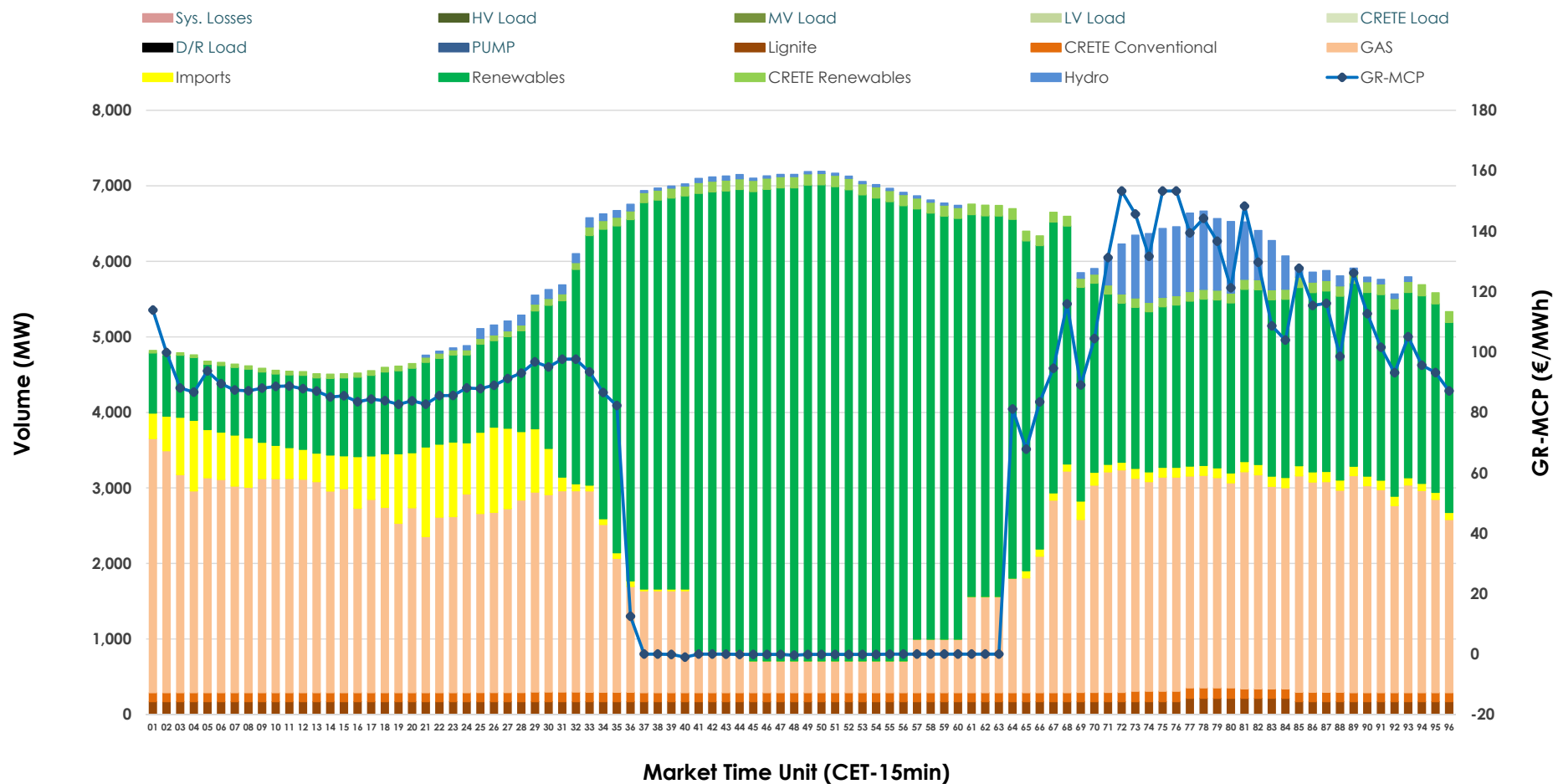


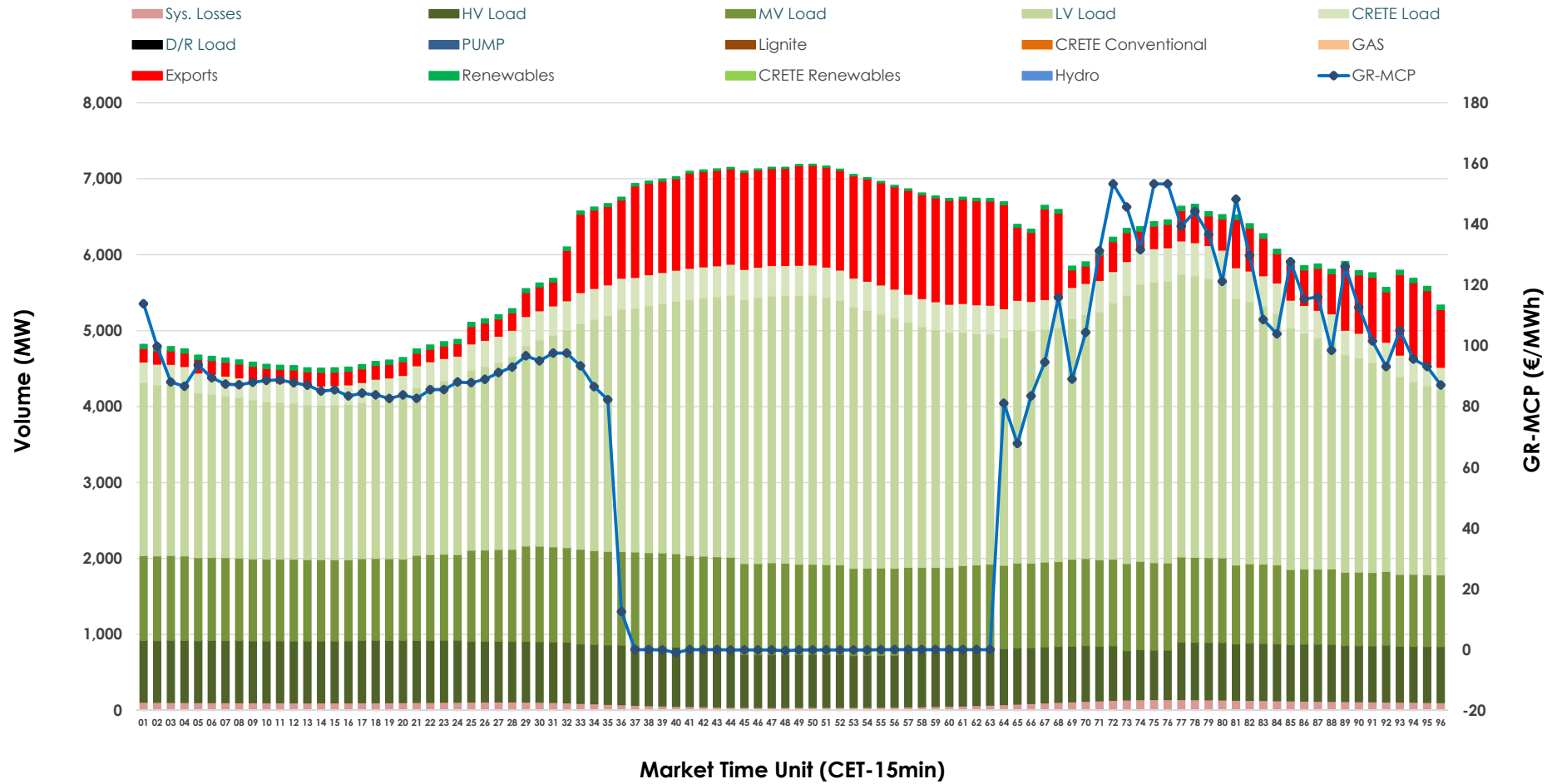


Day-Ahead Market Outlook

11.10.2025 Day-Ahead Market - Sell



11.10.2025 Day-Ahead Market - Buy



GR Bidding Zone Weekly Figures

Delivery Day	05.10	06.10	07.10	08.10	09.10	10.10	11.10
	↓ -34%	↑ 107%	↘ -28%	↗ 25%	↘ -13%	↗ 20%	↓ -41%
Avg.MCP (€/MWh)	62.53	129.31	93.55	117.26	102.26	122.49	72.37
Max.MCP (€/MWh)	166.91	325.39	287.19	264.90	235.21	274.24	153.30
Min.MCP (€/MWh)	-4.79	52.91	0.00	85.50	0.00	17.39	-1.00
	↘ -8%	↗ 15%	↗ 8%	↘ -3%	↘ -4%	↘ -4%	↘ -2%
Tot.Vol(GWh)	265.79	305.05	330.34	319.75	307.56	293.92	287.02

Trades by Order Type

Delivery Day		05.10	06.10	07.10	08.10	09.10	10.10	11.10	
Ord Price Type		Sell & Buy Trades in (GWh) per Price Type							(%)
PPT	(S)	48.135	46.128	50.257	40.771	41.781	41.758	46.708	32.55%
HBD	(S)	54.528	58.187	65.814	61.437	66.409	62.268	60.154	41.92%
BLK	(S)	24.595	47.363	49.081	55.227	44.221	37.942	32.325	22.52%
CPL	(S)	5.635	0.848	0.016	2.440	1.371	4.991	4.322	3.01%
PPT	(B)	13.289	14.579	15.499	15.818	16.340	15.651	14.986	10.44%
HBD	(B)	110.850	125.258	131.393	134.389	127.211	123.519	118.981	82.91%
BLK	(B)	0.000	0.000	0.000	0.000	0.000	0.000	0.000	0.00%
CPL	(B)	8.754	12.689	18.276	9.669	10.230	7.789	9.542	6.65%
		Sell & Buy Orders Traded per Price Type							(%)
PPT	(S)	1342	1353	1398	1337	1378	1464	1413	40.01%
HBD	(S)	1850	2474	2385	2511	2477	2600	2110	59.74%
BLK	(S)	12	25	19	23	13	15	9	0.25%
PPT	(B)	2246	2212	2247	2266	2284	2271	2277	35.51%
HBD	(B)	4142	3956	4202	4074	4059	3854	4135	64.49%
BLK	(B)	0	0	0	0	0	0	0	0.00%

MCP	Market Clearing Price (€/MWh)
PPT	Priority Price-Taking
HBD	Hybrid
BLK	Block
CPL	Market Coupling Flow

Trade's Volume Mix

		Sell - MWh	Buy - MWh	
Lignite	(2.9%)	4,168	0	(0.0%)
Crete Conv.	(2.0%)	2,930	0	(0.0%)
Gas	(34.6%)	49,698	0	(0.0%)
Hydro	(2.5%)	3,577	0	(0.0%)
Imports	(4.5%)	6,467		
RES	(51.6%)	74,010	1,084	(0.8%)
Crete RES	(1.9%)	2,660	0	(0.0%)
HV Load	(0.0%)	0	18,206	(12.7%)
MV Load	(0.0%)	0	26,952	(18.8%)
LV Load	(0.0%)	0	69,825	(48.7%)
Crete Load	(0.0%)	0	8,562	(6.0%)
Pumping	(0.0%)	0	0	(0.0%)
Exports			16,647	(11.6%)
Sys.Losses	(0.0%)	0	2,234	(1.6%)
D/R Load	(0.0%)	0	0	(0.0%)

