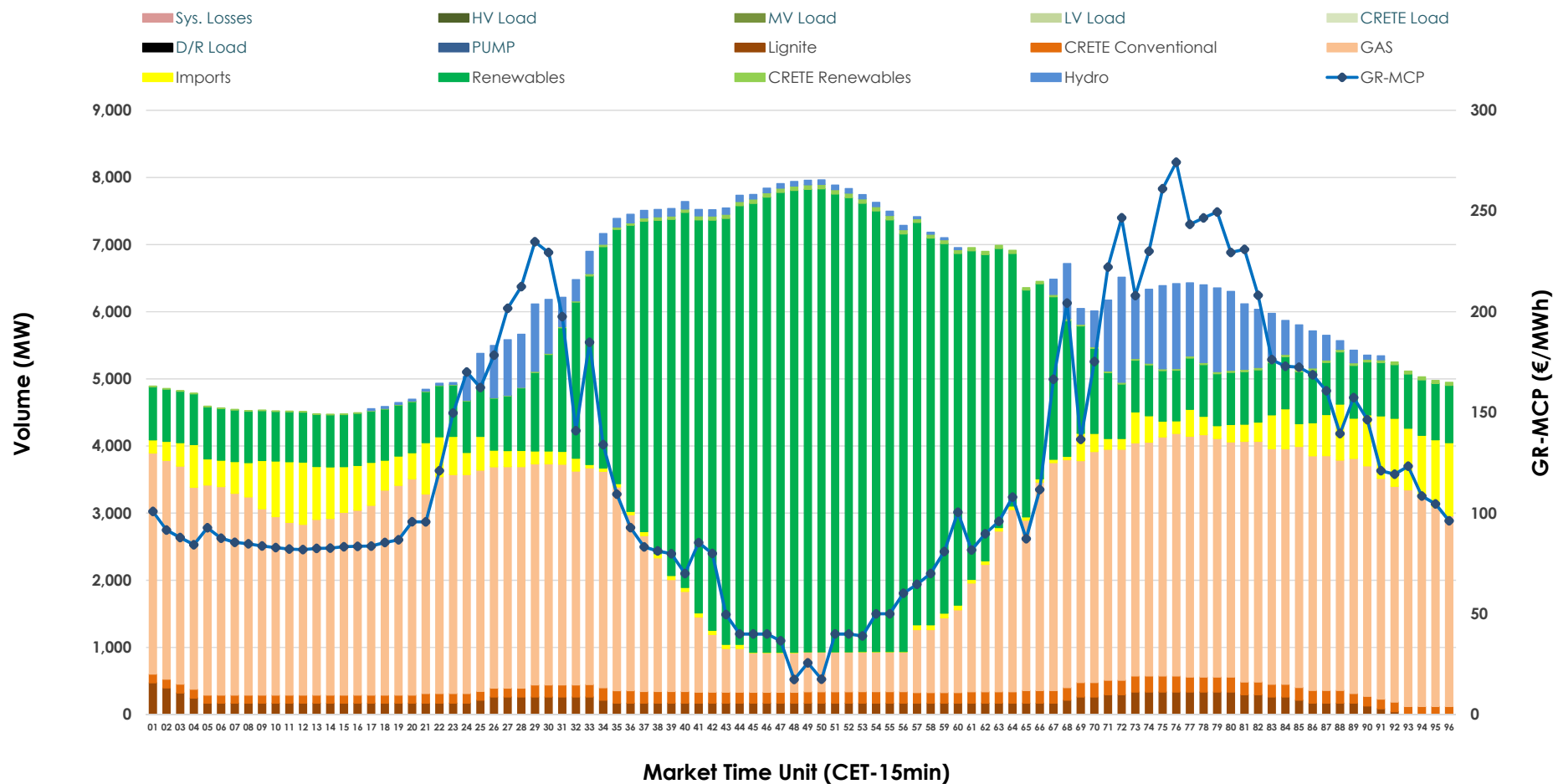


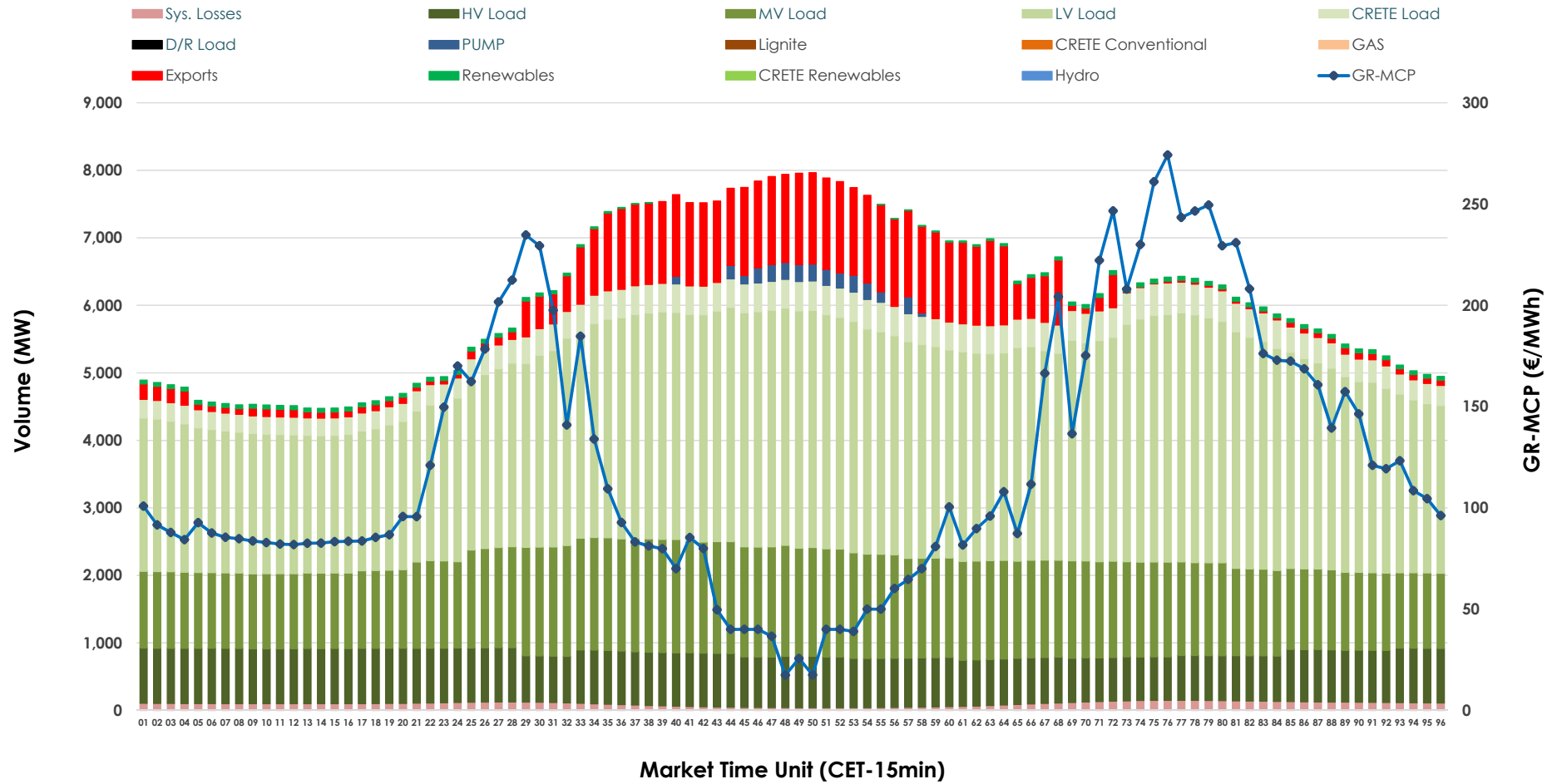


## Day-Ahead Market Outlook

10.10.2025 Day-Ahead Market - Sell



## 10.10.2025 Day-Ahead Market - Buy



### GR Bidding Zone Weekly Figures

Delivery Day	04.10	05.10	06.10	07.10	08.10	09.10	10.10
	↗ 7%	↘ -34%	↗ 107%	↘ -28%	↗ 25%	↘ -13%	↗ 20%
Avg.MCP (€/MWh)	94.93	62.53	129.31	93.55	117.26	102.26	122.49
Max.MCP (€/MWh)	255.19	166.91	325.39	287.19	264.90	235.21	274.24
Min.MCP (€/MWh)	0.00	-4.79	52.91	0.00	85.50	0.00	17.39
	↘ -9%	↘ -8%	↗ 15%	↗ 8%	↘ -3%	↘ -4%	↘ -4%
Tot.Vol(GWh)	289.09	265.79	305.05	330.34	319.75	307.56	293.92

### Trades by Order Type

Delivery Day		04.10	05.10	06.10	07.10	08.10	09.10	10.10	
Ord Price Type		Sell & Buy Trades in (GWh) per Price Type							(%)
PPT	(S)	48.063	48.135	46.128	50.257	40.771	41.781	41.758	28.41%
HBD	(S)	63.642	54.528	58.187	65.814	61.437	66.409	62.268	42.37%
BLK	(S)	30.576	24.595	47.363	49.081	55.227	44.221	37.942	25.82%
CPL	(S)	2.263	5.635	0.848	0.016	2.440	1.371	4.991	3.40%
PPT	(B)	14.720	13.289	14.579	15.499	15.818	16.340	15.651	10.65%
HBD	(B)	121.947	110.850	125.258	131.393	134.389	127.211	123.519	84.05%
BLK	(B)	0.000	0.000	0.000	0.000	0.000	0.000	0.000	0.00%
CPL	(B)	7.878	8.754	12.689	18.276	9.669	10.230	7.789	5.30%
		Sell & Buy Orders Traded per Price Type							(%)
PPT	(S)	1436	1342	1353	1398	1337	1378	1464	35.89%
HBD	(S)	2519	1850	2474	2385	2511	2477	2600	63.74%
BLK	(S)	13	12	25	19	23	13	15	0.37%
PPT	(B)	2189	2246	2212	2247	2266	2284	2271	37.08%
HBD	(B)	3895	4142	3956	4202	4074	4059	3854	62.92%
BLK	(B)	0	0	0	0	0	0	0	0.00%

<b>MCP</b>	Market Clearing Price (€/MWh)
<b>PPT</b>	Priority Price-Taking
<b>HBD</b>	Hybrid
<b>BLK</b>	Block
<b>CPL</b>	Market Coupling Flow

### Trade's Volume Mix

		Sell - MWh	Buy - MWh	
Lignite	(3.3%)	4,811	0	(0.0%)
Crete Conv.	(2.7%)	3,917	0	(0.0%)
Gas	(42.3%)	62,138	0	(0.0%)
Hydro	(4.6%)	6,772	0	(0.0%)
Imports	(5.4%)	7,923		
RES	(41.2%)	60,596	944	(0.6%)
Crete RES	(0.5%)	801	0	(0.0%)
HV Load	(0.0%)	0	18,079	(12.3%)
MV Load	(0.0%)	0	33,152	(22.6%)
LV Load	(0.0%)	0	70,347	(47.9%)
Crete Load	(0.0%)	0	9,001	(6.1%)
Pumping	(0.0%)	0	768	(0.5%)
Exports			12,327	(8.4%)
Sys.Losses	(0.0%)	0	2,341	(1.6%)
D/R Load	(0.0%)	0	0	(0.0%)

