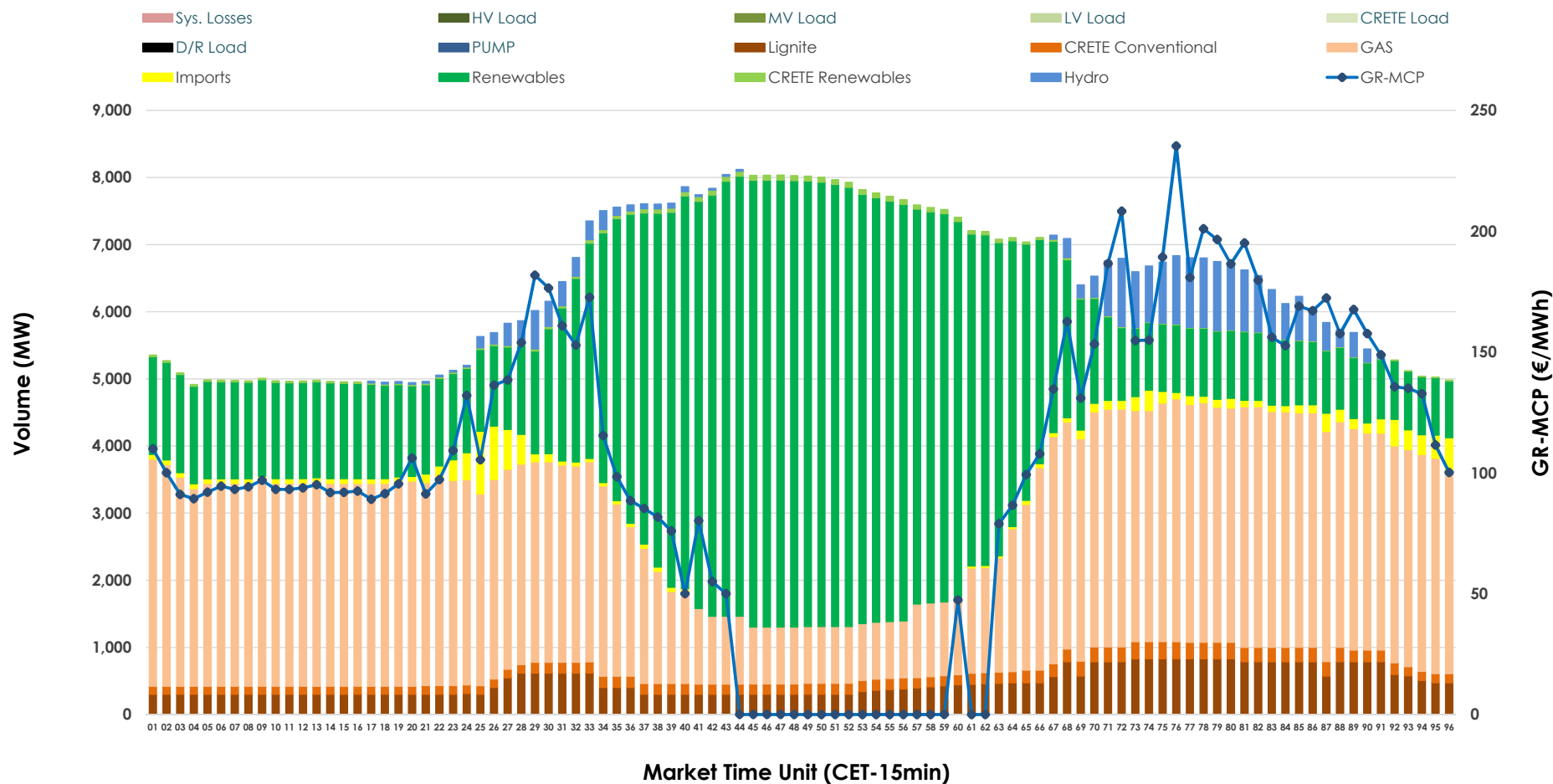


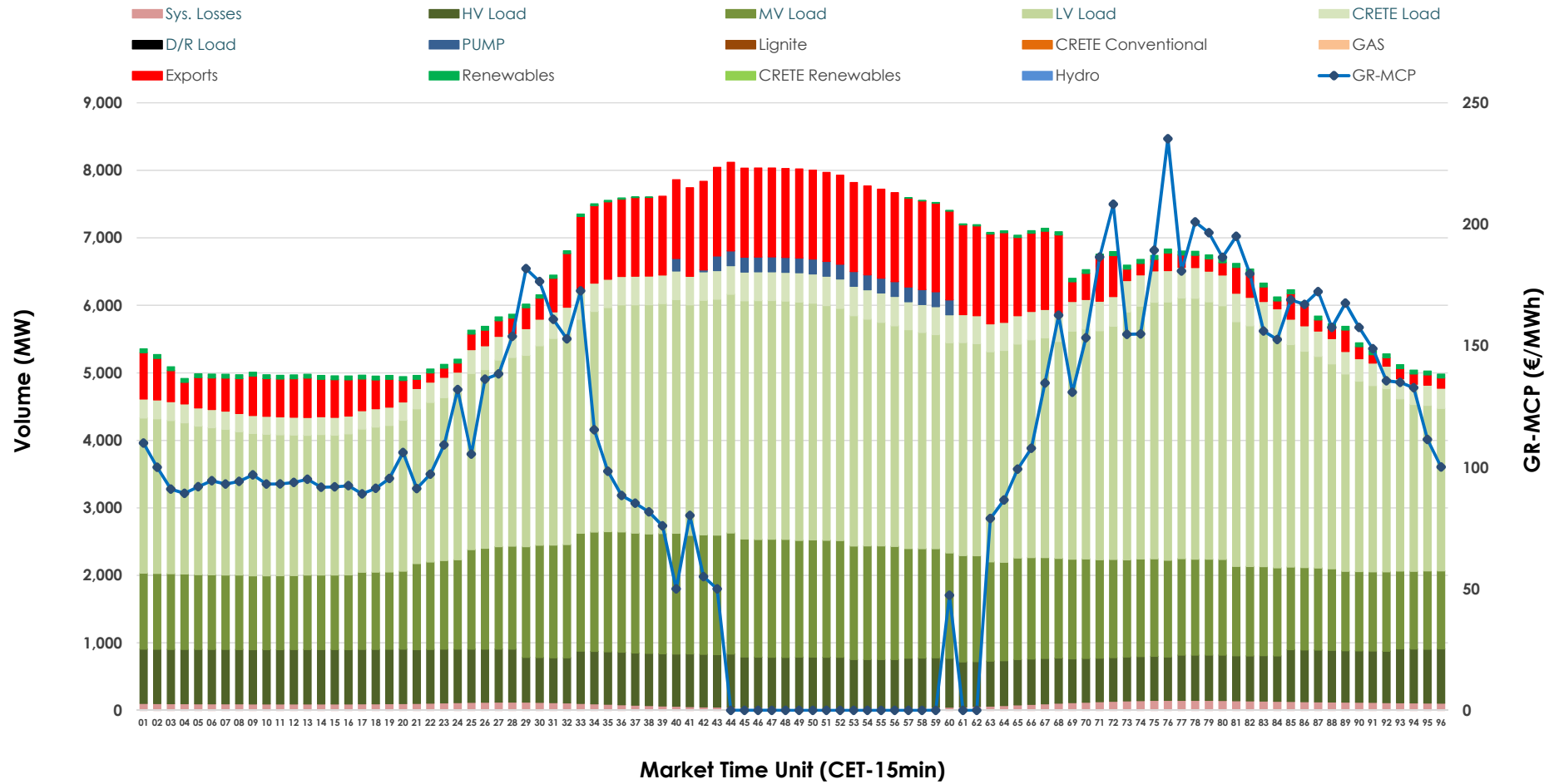


Day-Ahead Market Outlook

09.10.2025 Day-Ahead Market - Sell



09.10.2025 Day-Ahead Market - Buy



GR Bidding Zone Weekly Figures

Delivery Day	03.10	04.10	05.10	06.10	07.10	08.10	09.10
	👇 -26%	👈 7%	👇 -34%	👈 107%	👇 -28%	👈 25%	👇 -13%
Avg.MCP (€/MWh)	88.90	94.93	62.53	129.31	93.55	117.26	102.26
Max.MCP (€/MWh)	161.35	255.19	166.91	325.39	287.19	264.90	235.21
Min.MCP (€/MWh)	0.00	0.00	-4.79	52.91	0.00	85.50	0.00
	👈 8%	👇 -9%	👇 -8%	👈 15%	👈 8%	👇 -3%	👇 -4%
Tot.Vol(GWh)	317.55	289.09	265.79	305.05	330.34	319.75	307.56

Trades by Order Type

Delivery Day		03.10	04.10	05.10	06.10	07.10	08.10	09.10	
Ord Price Type		Sell & Buy Trades in (GWh) per Price Type							(%)
PPT	(S)	60.427	48.063	48.135	46.128	50.257	40.771	41.781	27.17%
HBD	(S)	67.300	63.642	54.528	58.187	65.814	61.437	66.409	43.18%
BLK	(S)	30.920	30.576	24.595	47.363	49.081	55.227	44.221	28.76%
CPL	(S)	0.129	2.263	5.635	0.848	0.016	2.440	1.371	0.89%
PPT	(B)	15.062	14.720	13.289	14.579	15.499	15.818	16.340	10.63%
HBD	(B)	130.664	121.947	110.850	125.258	131.393	134.389	127.211	82.72%
BLK	(B)	0.000	0.000	0.000	0.000	0.000	0.000	0.000	0.00%
CPL	(B)	13.051	7.878	8.754	12.689	18.276	9.669	10.230	6.65%
		Sell & Buy Orders Traded per Price Type							(%)
PPT	(S)	1456	1436	1342	1353	1398	1337	1378	35.63%
HBD	(S)	2347	2519	1850	2474	2385	2511	2477	64.04%
BLK	(S)	13	13	12	25	19	23	13	0.34%
PPT	(B)	2196	2189	2246	2212	2247	2266	2284	36.01%
HBD	(B)	4017	3895	4142	3956	4202	4074	4059	63.99%
BLK	(B)	0	0	0	0	0	0	0	0.00%

MCP	Market Clearing Price (€/MWh)
PPT	Priority Price-Taking
HBD	Hybrid
BLK	Block
CPL	Market Coupling Flow

Trade's Volume Mix

		Sell - MWh	Buy - MWh	
Lignite	(7.5%)	11,536	0	(0.0%)
Crete Conv.	(2.6%)	3,939	0	(0.0%)
Gas	(40.3%)	61,935	0	(0.0%)
Hydro	(3.2%)	4,919	0	(0.0%)
Imports	(1.9%)	2,901		
RES	(44.0%)	67,731	928	(0.6%)
Crete RES	(0.5%)	821	0	(0.0%)
HV Load	(0.0%)	0	17,848	(11.6%)
MV Load	(0.0%)	0	34,344	(22.3%)
LV Load	(0.0%)	0	71,879	(46.7%)
Crete Load	(0.0%)	0	9,003	(5.9%)
Pumping	(0.0%)	0	1,043	(0.7%)
Exports			16,445	(10.7%)
Sys.Losses	(0.0%)	0	2,292	(1.5%)
D/R Load	(0.0%)	0	0	(0.0%)

