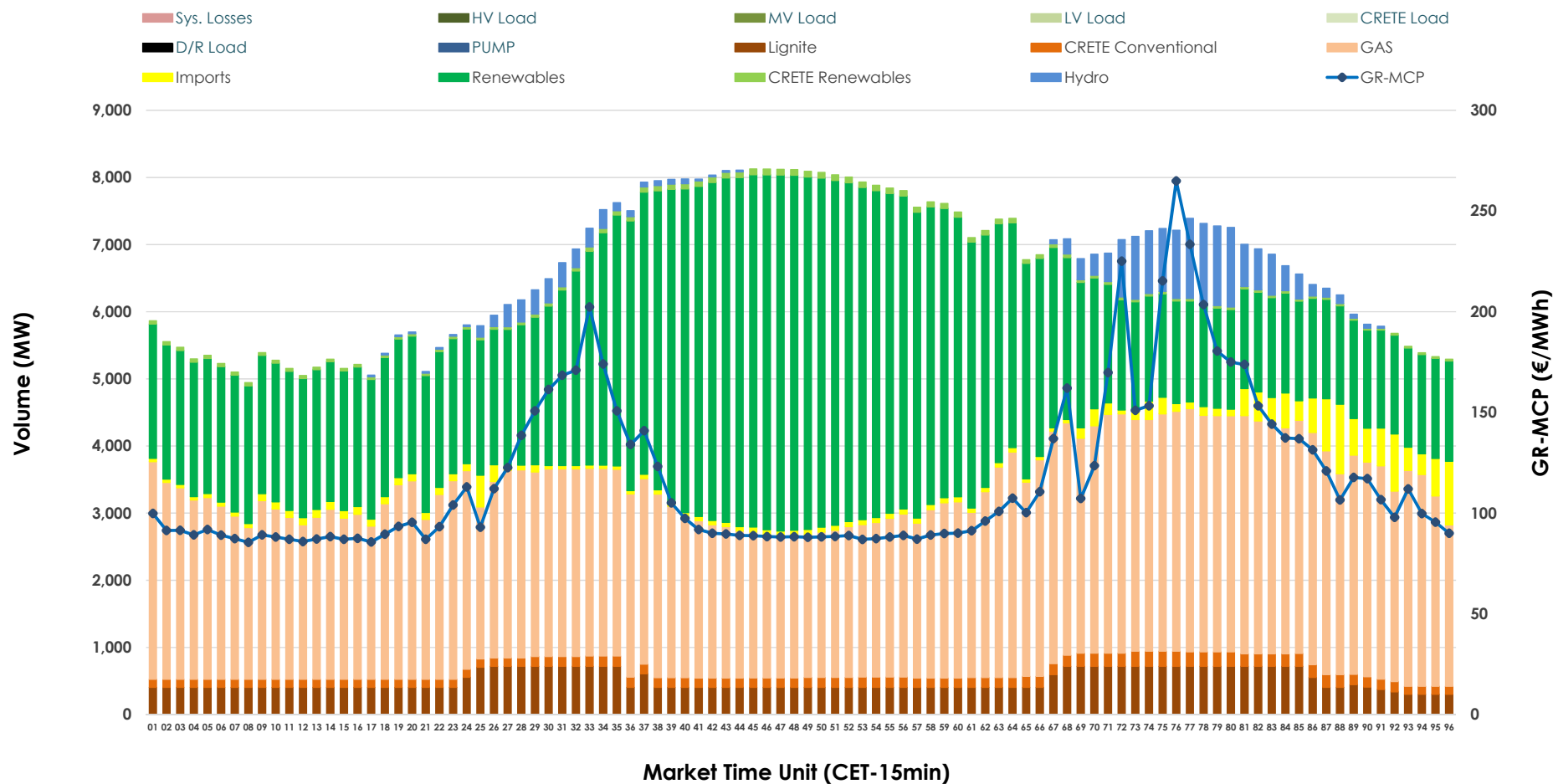


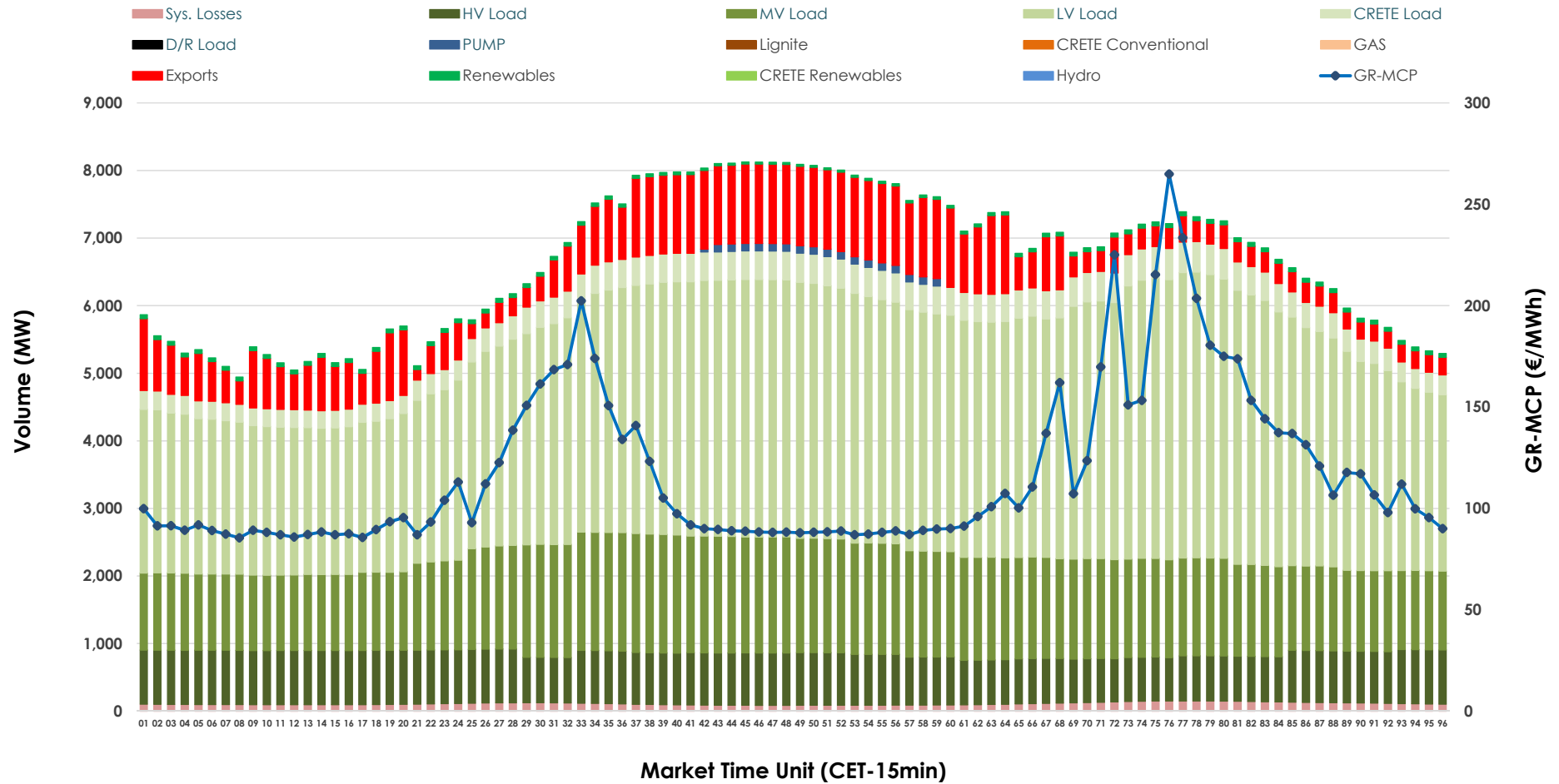


Day-Ahead Market Outlook

08.10.2025 Day-Ahead Market - Sell



08.10.2025 Day-Ahead Market - Buy



GR Bidding Zone Weekly Figures

Delivery Day	02.10	03.10	04.10	05.10	06.10	07.10	08.10
	👇 -2%	👇 -26%	👈 7%	👇 -34%	👈 107%	👇 -28%	👈 25%
Avg.MCP (€/MWh)	120.35	88.90	94.93	62.53	129.31	93.55	117.26
Max.MCP (€/MWh)	235.24	161.35	255.19	166.91	325.39	287.19	264.90
Min.MCP (€/MWh)	81.17	0.00	0.00	-4.79	52.91	0.00	85.50
	➡ 0%	👈 8%	👇 -9%	👇 -8%	👈 15%	👈 8%	👇 -3%
Tot.Vol(GWh)	292.94	317.55	289.09	265.79	305.05	330.34	319.75

Trades by Order Type

Delivery Day		02.10	03.10	04.10	05.10	06.10	07.10	08.10	
Ord Price Type		Sell & Buy Trades in (GWh) per Price Type							(%)
PPT	(S)	42.407	60.427	48.063	48.135	46.128	50.257	40.771	25.50%
HBD	(S)	49.949	67.300	63.642	54.528	58.187	65.814	61.437	38.43%
BLK	(S)	45.670	30.920	30.576	24.595	47.363	49.081	55.227	34.54%
CPL	(S)	8.446	0.129	2.263	5.635	0.848	0.016	2.440	1.53%
PPT	(B)	15.490	15.062	14.720	13.289	14.579	15.499	15.818	9.89%
HBD	(B)	130.628	130.664	121.947	110.850	125.258	131.393	134.389	84.06%
BLK	(B)	0.000	0.000	0.000	0.000	0.000	0.000	0.000	0.00%
CPL	(B)	0.354	13.051	7.878	8.754	12.689	18.276	9.669	6.05%
		Sell & Buy Orders Traded per Price Type							(%)
PPT	(S)	1399	1456	1436	1342	1353	1398	1337	34.54%
HBD	(S)	2453	2347	2519	1850	2474	2385	2511	64.87%
BLK	(S)	12	13	13	12	25	19	23	0.59%
PPT	(B)	2171	2196	2189	2246	2212	2247	2266	35.74%
HBD	(B)	3833	4017	3895	4142	3956	4202	4074	64.26%
BLK	(B)	0	0	0	0	0	0	0	0.00%

MCP	Market Clearing Price (€/MWh)
PPT	Priority Price-Taking
HBD	Hybrid
BLK	Block
CPL	Market Coupling Flow

Trade's Volume Mix

		Sell - MWh	Buy - MWh	
Lignite	(7.5%)	12,048	0	(0.0%)
Crete Conv.	(2.2%)	3,582	0	(0.0%)
Gas	(42.2%)	67,520	0	(0.0%)
Hydro	(2.8%)	4,414	0	(0.0%)
Imports	(2.6%)	4,119		
RES	(41.9%)	66,941	1,191	(0.7%)
Crete RES	(0.8%)	1,252	0	(0.0%)
HV Load	(0.0%)	0	17,906	(11.2%)
MV Load	(0.0%)	0	34,378	(21.5%)
LV Load	(0.0%)	0	78,085	(48.8%)
Crete Load	(0.0%)	0	8,932	(5.6%)
Pumping	(0.0%)	0	478	(0.3%)
Exports			16,275	(10.2%)
Sys.Losses	(0.0%)	0	2,630	(1.6%)
D/R Load	(0.0%)	0	0	(0.0%)

