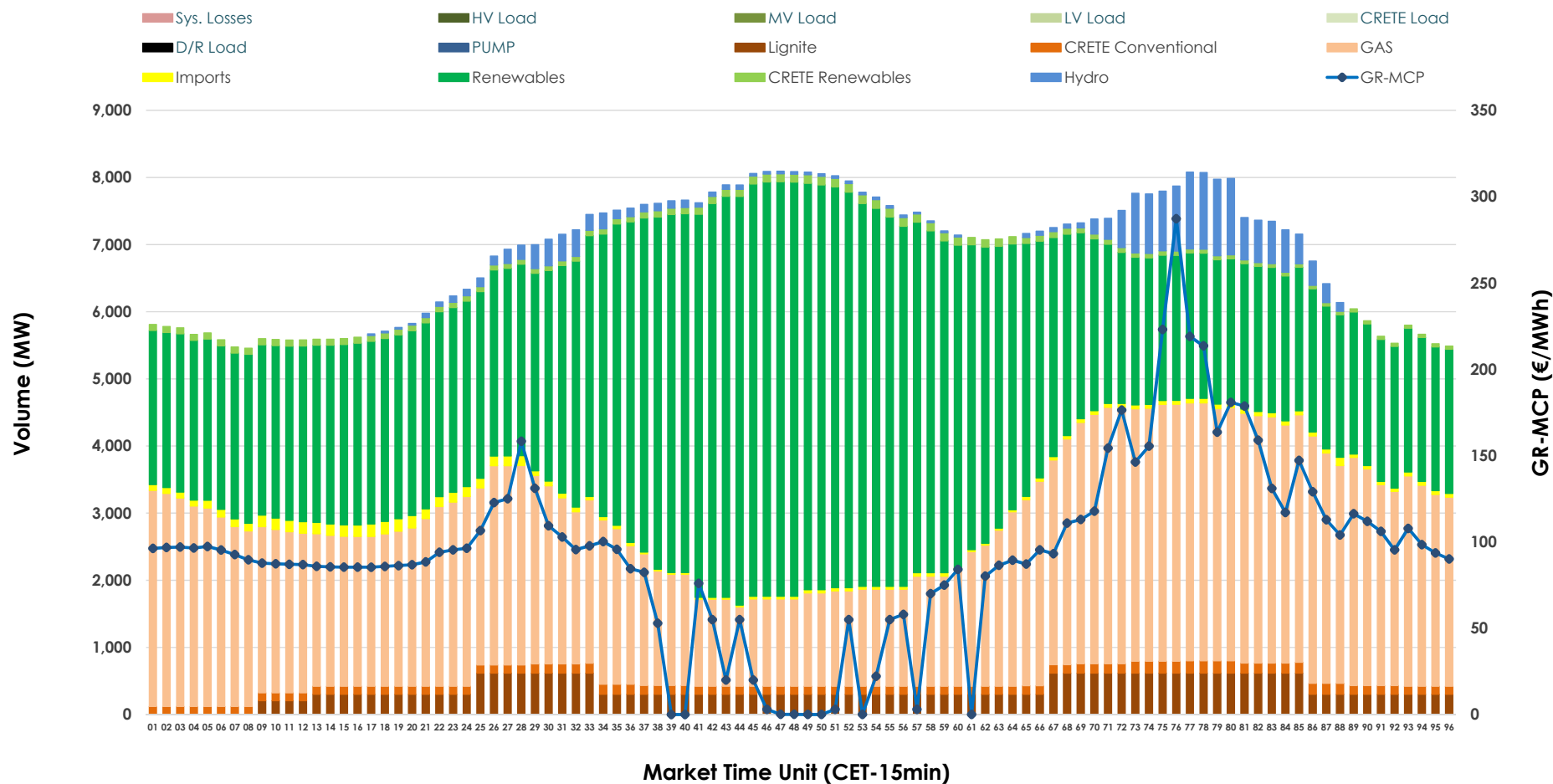


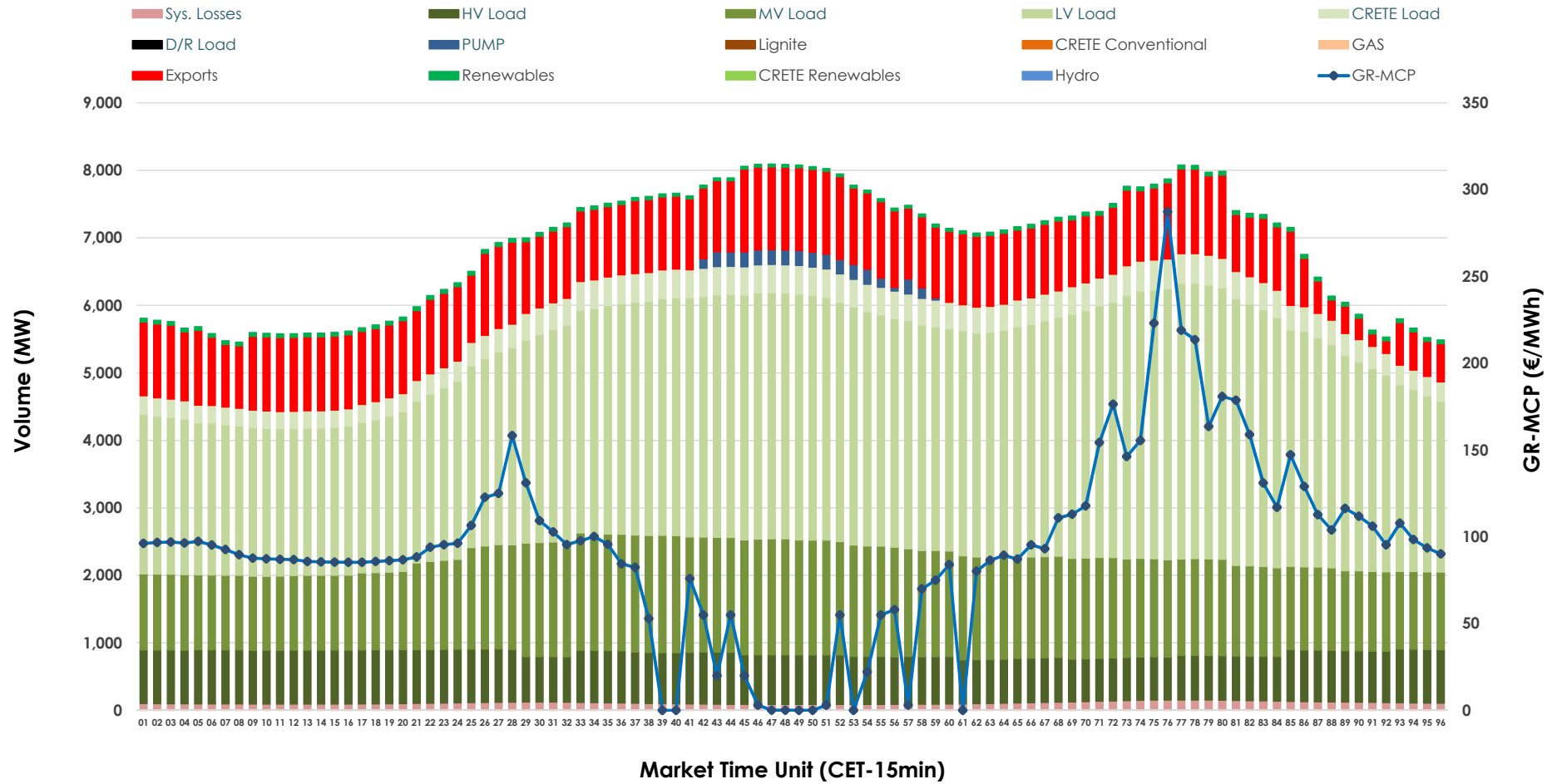


## Day-Ahead Market Outlook

07.10.2025 Day-Ahead Market - Sell



## 07.10.2025 Day-Ahead Market - Buy



### GR Bidding Zone Weekly Figures

Delivery Day	01.10	02.10	03.10	04.10	05.10	06.10	07.10
	👇 -15%	👇 -2%	👇 -26%	👈 7%	👇 -34%	👈 107%	👇 -28%
<b>Avg.MCP (€/MWh)</b>	122.92	120.35	88.90	94.93	62.53	129.31	93.55
<b>Max.MCP (€/MWh)</b>	381.39	235.24	161.35	255.19	166.91	325.39	287.19
<b>Min.MCP (€/MWh)</b>	68.00	81.17	0.00	0.00	-4.79	52.91	0.00
	👇 -3%	👈 0%	👈 8%	👇 -9%	👇 -8%	👈 15%	👈 8%
<b>Tot.Vol(GWh)</b>	291.57	292.94	317.55	289.09	265.79	305.05	330.34

### Trades by Order Type

Delivery Day		01.10	02.10	03.10	04.10	05.10	06.10	07.10	
Ord Price Type		Sell & Buy Trades in (GWh) per Price Type							(%)
PPT	(S)	44.485	42.407	60.427	48.063	48.135	46.128	50.257	30.43%
HBD	(S)	47.185	49.949	67.300	63.642	54.528	58.187	65.814	39.85%
BLK	(S)	45.862	45.670	30.920	30.576	24.595	47.363	49.081	29.72%
CPL	(S)	8.253	8.446	0.129	2.263	5.635	0.848	0.016	0.01%
PPT	(B)	14.919	15.490	15.062	14.720	13.289	14.579	15.499	9.38%
HBD	(B)	127.299	130.628	130.664	121.947	110.850	125.258	131.393	79.55%
BLK	(B)	0.000	0.000	0.000	0.000	0.000	0.000	0.000	0.00%
CPL	(B)	3.567	0.354	13.051	7.878	8.754	12.689	18.276	11.06%
		Sell & Buy Orders Traded per Price Type							(%)
PPT	(S)	1465	1399	1456	1436	1342	1353	1398	36.77%
HBD	(S)	2322	2453	2347	2519	1850	2474	2385	62.73%
BLK	(S)	23	12	13	13	12	25	19	0.50%
PPT	(B)	2175	2171	2196	2189	2246	2212	2247	34.84%
HBD	(B)	3985	3833	4017	3895	4142	3956	4202	65.16%
BLK	(B)	0	0	0	0	0	0	0	0.00%

<b>MCP</b>	Market Clearing Price (€/MWh)
<b>PPT</b>	Priority Price-Taking
<b>HBD</b>	Hybrid
<b>BLK</b>	Block
<b>CPL</b>	Market Coupling Flow

### Trade's Volume Mix

		Sell - MWh	Buy - MWh	
Lignite	(5.3%)	8,745	0	(0.0%)
Crete Conv.	(1.9%)	3,160	0	(0.0%)
Gas	(37.6%)	62,022	0	(0.0%)
Hydro	(2.7%)	4,491	0	(0.0%)
Imports	(1.1%)	1,880		
RES	(50.1%)	82,827	1,261	(0.8%)
Crete RES	(1.2%)	2,043	0	(0.0%)
HV Load	(0.0%)	0	17,660	(10.7%)
MV Load	(0.0%)	0	34,219	(20.7%)
LV Load	(0.0%)	0	75,581	(45.8%)
Crete Load	(0.0%)	0	8,745	(5.3%)
Pumping	(0.0%)	0	842	(0.5%)
Exports			24,220	(14.7%)
Sys.Losses	(0.0%)	0	2,641	(1.6%)
D/R Load	(0.0%)	0	0	(0.0%)

