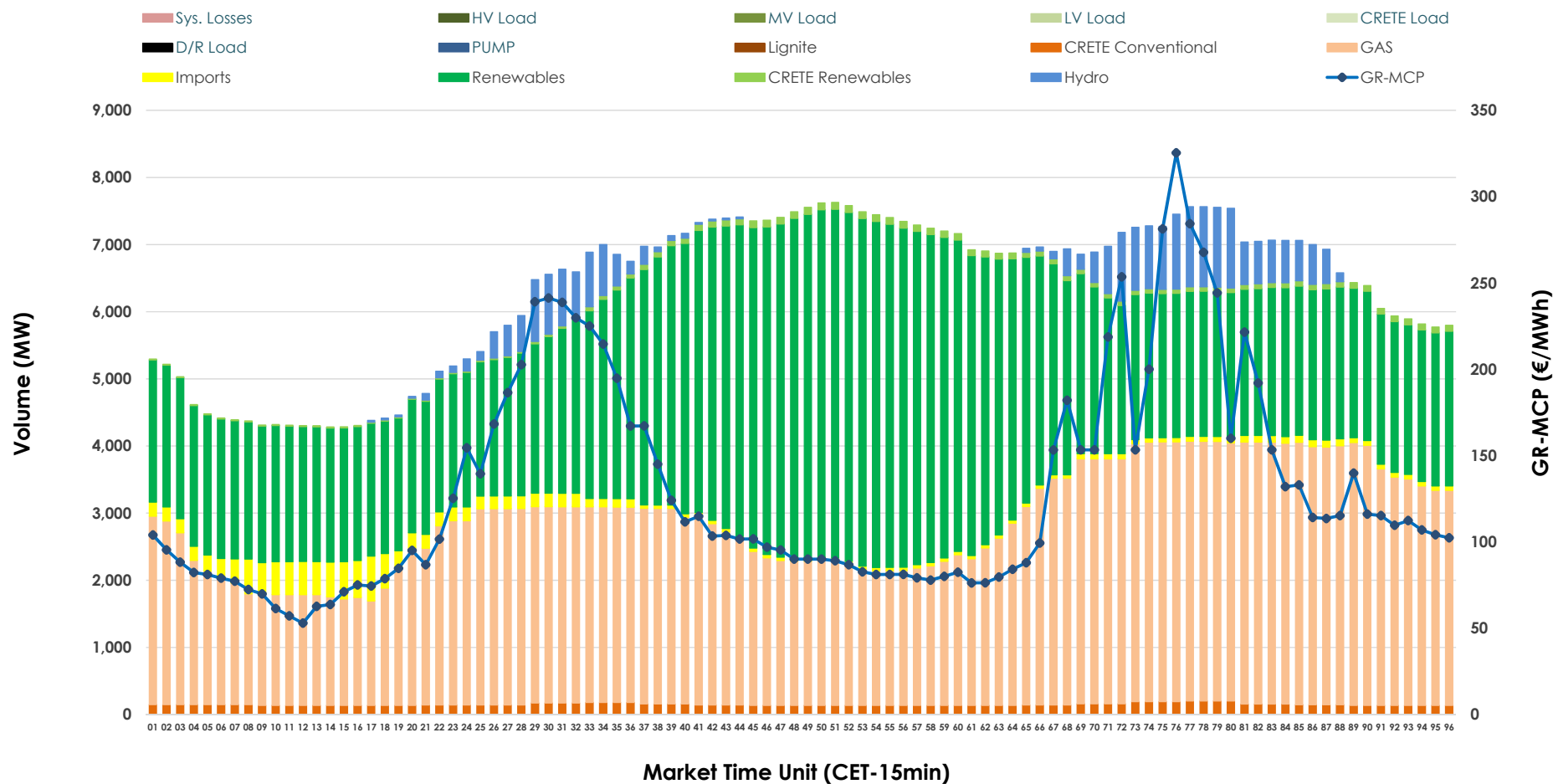


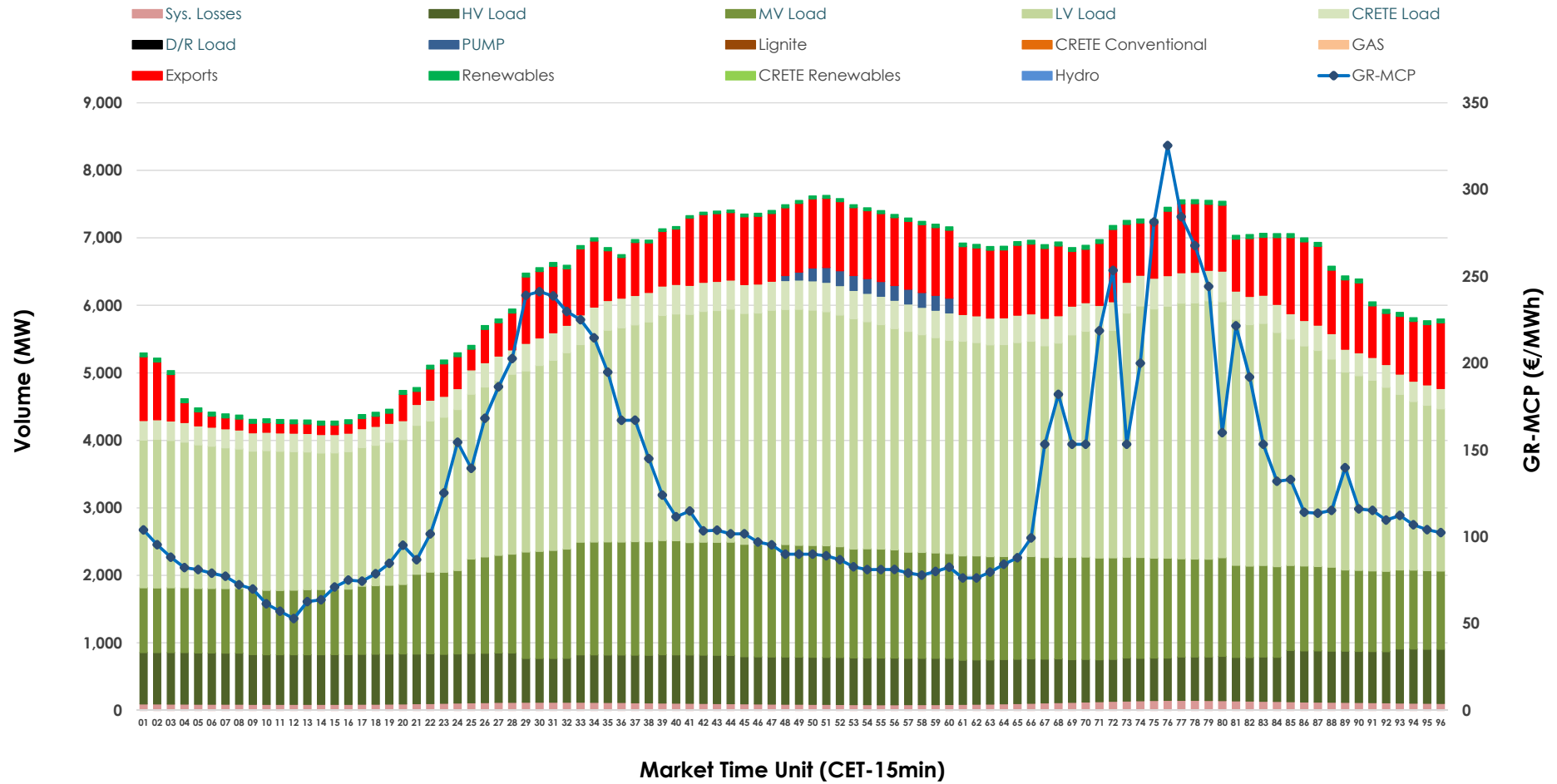


Day-Ahead Market Outlook

06.10.2025 Day-Ahead Market - Sell



06.10.2025 Day-Ahead Market - Buy



GR Bidding Zone Weekly Figures

Delivery Day	30.09	01.10	02.10	03.10	04.10	05.10	06.10
	↗ 2%	↘ -15%	↘ -2%	↘ -26%	↗ 7%	↘ -34%	↗ 107%
Avg.MCP (€/MWh)	144.28	122.92	120.35	88.90	94.93	62.53	129.31
Max.MCP (€/MWh)	367.91	381.39	235.24	161.35	255.19	166.91	325.39
Min.MCP (€/MWh)	54.21	68.00	81.17	0.00	0.00	-4.79	52.91
	↗ 9%	↘ -3%	↗ 0%	↗ 8%	↘ -9%	↘ -8%	↗ 15%
Tot.Vol(GWh)	300.33	291.57	292.94	317.55	289.09	265.79	305.05

Trades by Order Type

Delivery Day		30.09	01.10	02.10	03.10	04.10	05.10	06.10	
Ord Price Type		Sell & Buy Trades in (GWh) per Price Type							(%)
PPT	(S)	44.048	44.485	42.407	60.427	48.063	48.135	46.128	30.24%
HBD	(S)	54.064	47.185	49.949	67.300	63.642	54.528	58.187	38.15%
BLK	(S)	41.669	45.862	45.670	30.920	30.576	24.595	47.363	31.05%
CPL	(S)	10.386	8.253	8.446	0.129	2.263	5.635	0.848	0.56%
PPT	(B)	13.775	14.919	15.490	15.062	14.720	13.289	14.579	9.56%
HBD	(B)	132.095	127.299	130.628	130.664	121.947	110.850	125.258	82.12%
BLK	(B)	0.000	0.000	0.000	0.000	0.000	0.000	0.000	0.00%
CPL	(B)	4.297	3.567	0.354	13.051	7.878	8.754	12.689	8.32%
		Sell & Buy Orders Traded per Price Type							(%)
PPT	(S)	445	1465	1399	1456	1436	1342	1353	35.12%
HBD	(S)	683	2322	2453	2347	2519	1850	2474	64.23%
BLK	(S)	17	23	12	13	13	12	25	0.65%
PPT	(B)	566	2175	2171	2196	2189	2246	2212	35.86%
HBD	(B)	990	3985	3833	4017	3895	4142	3956	64.14%
BLK	(B)	0	0	0	0	0	0	0	0.00%

MCP	Market Clearing Price (€/MWh)
PPT	Priority Price-Taking
HBD	Hybrid
BLK	Block
CPL	Market Coupling Flow

Trade's Volume Mix

		Sell - MWh	Buy - MWh	
Lignite	(0.0%)	0	0	(0.0%)
Crete Conv.	(2.4%)	3,587	0	(0.0%)
Gas	(43.7%)	66,714	0	(0.0%)
Hydro	(4.0%)	6,072	0	(0.0%)
Imports	(2.4%)	3,672		
RES	(46.6%)	71,022	1,252	(0.8%)
Crete RES	(1.0%)	1,459	0	(0.0%)
HV Load	(0.0%)	0	16,932	(11.1%)
MV Load	(0.0%)	0	33,091	(21.7%)
LV Load	(0.0%)	0	70,612	(46.3%)
Crete Load	(0.0%)	0	9,036	(5.9%)
Pumping	(0.0%)	0	646	(0.4%)
Exports			18,365	(12.0%)
Sys.Losses	(0.0%)	0	2,592	(1.7%)
D/R Load	(0.0%)	0	0	(0.0%)

