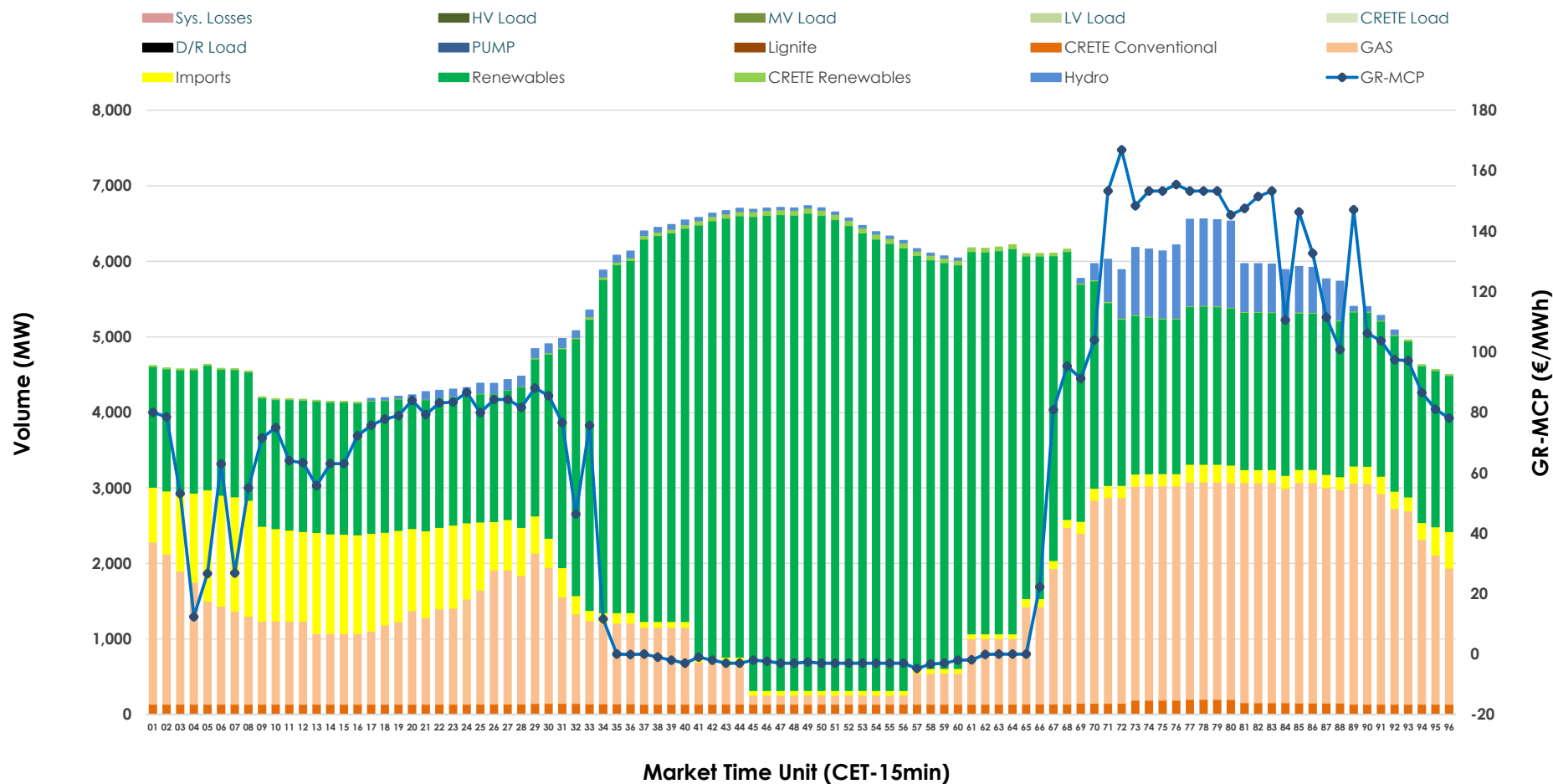


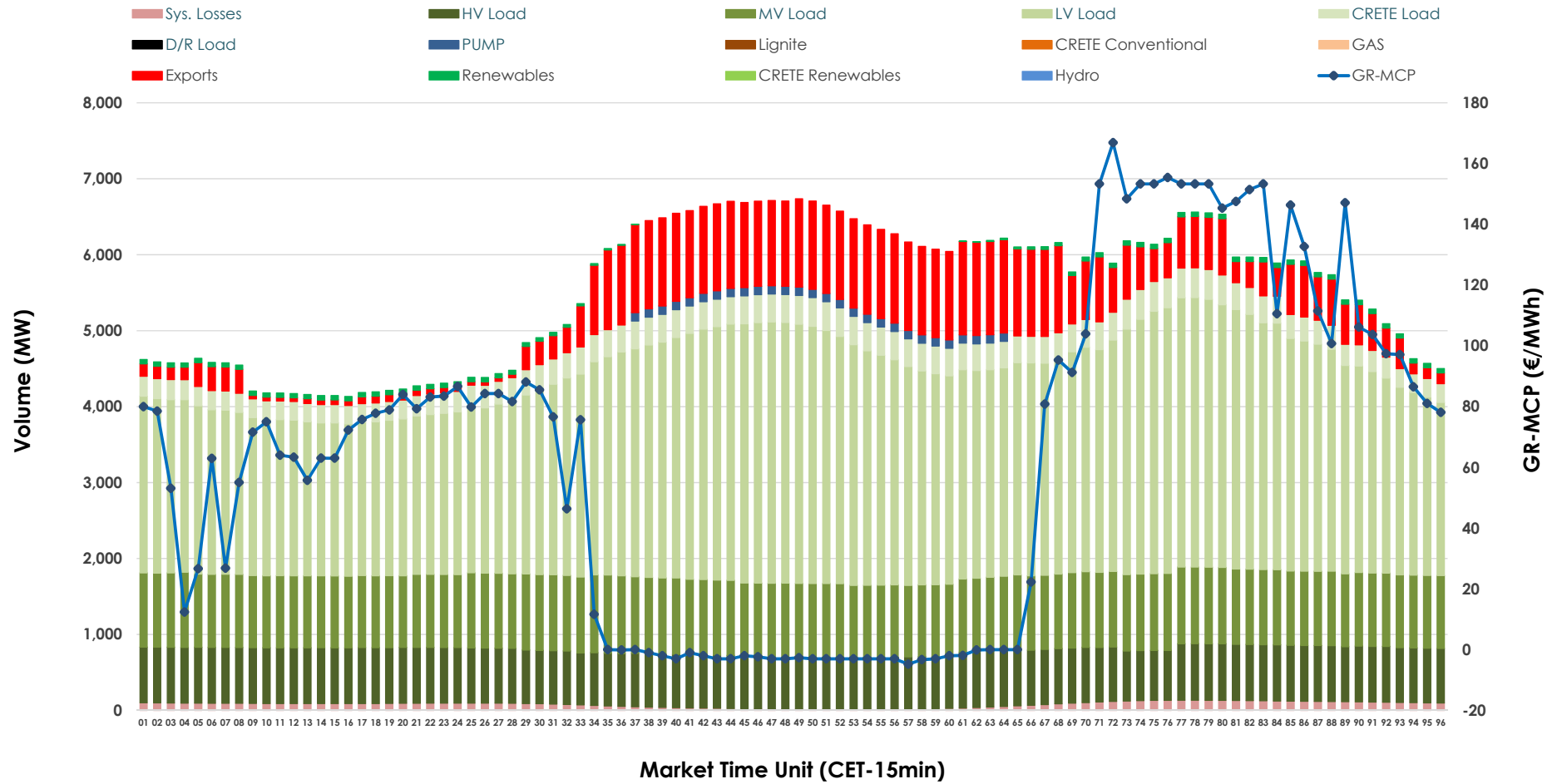


Day-Ahead Market Outlook

05.10.2025 Day-Ahead Market - Sell



05.10.2025 Day-Ahead Market - Buy



GR Bidding Zone Weekly Figures

Delivery Day	29.09	30.09	01.10	02.10	03.10	04.10	05.10
	↑ 35%	↗ 2%	↓ -15%	↓ -2%	↓ -26%	↑ 7%	↓ -34%
Avg.MCP (€/MWh)	141.58	144.28	122.92	120.35	88.90	94.93	62.53
Max.MCP (€/MWh)	425.83	367.91	381.39	235.24	161.35	255.19	166.91
Min.MCP (€/MWh)	79.86	54.21	68.00	81.17	0.00	0.00	-4.79
	↗ 2%	↗ 9%	↓ -3%	→ 0%	↗ 8%	↓ -9%	↓ -8%
Tot.Vol(GWh)	275.33	300.33	291.57	292.94	317.55	289.09	265.79

Trades by Order Type

Delivery Day		29.09	30.09	01.10	02.10	03.10	04.10	05.10	
Ord Price Type		Sell & Buy Trades in (GWh) per Price Type							(%)
PPT	(S)	35.907	44.048	44.485	42.407	60.427	48.063	48.135	36.22%
HBD	(S)	47.972	54.064	47.185	49.949	67.300	63.642	54.528	41.03%
BLK	(S)	42.499	41.669	45.862	45.670	30.920	30.576	24.595	18.51%
CPL	(S)	11.285	10.386	8.253	8.446	0.129	2.263	5.635	4.24%
PPT	(B)	11.794	13.775	14.919	15.490	15.062	14.720	13.289	10.00%
HBD	(B)	123.436	132.095	127.299	130.628	130.664	121.947	110.850	83.41%
BLK	(B)	0.000	0.000	0.000	0.000	0.000	0.000	0.000	0.00%
CPL	(B)	2.433	4.297	3.567	0.354	13.051	7.878	8.754	6.59%
		Sell & Buy Orders Traded per Price Type							(%)
PPT	(S)	451	445	1465	1399	1456	1436	1342	41.89%
HBD	(S)	677	683	2322	2453	2347	2519	1850	57.74%
BLK	(S)	23	17	23	12	13	13	12	0.37%
PPT	(B)	560	566	2175	2171	2196	2189	2246	35.16%
HBD	(B)	1021	990	3985	3833	4017	3895	4142	64.84%
BLK	(B)	0	0	0	0	0	0	0	0.00%

MCP	Market Clearing Price (€/MWh)
PPT	Priority Price-Taking
HBD	Hybrid
BLK	Block
CPL	Market Coupling Flow

Trade's Volume Mix

		Sell - MWh	Buy - MWh	
Lignite	(0.0%)	0	0	(0.0%)
Crete Conv.	(2.6%)	3,453	0	(0.0%)
Gas	(27.0%)	35,827	0	(0.0%)
Hydro	(3.3%)	4,322	0	(0.0%)
Imports	(7.9%)	10,522		
RES	(58.8%)	78,100	900	(0.7%)
Crete RES	(0.5%)	670	0	(0.0%)
HV Load	(0.0%)	0	17,168	(12.9%)
MV Load	(0.0%)	0	23,464	(17.7%)
LV Load	(0.0%)	0	66,015	(49.7%)
Crete Load	(0.0%)	0	7,757	(5.8%)
Pumping	(0.0%)	0	770	(0.6%)
Exports			14,926	(11.2%)
Sys.Losses	(0.0%)	0	1,892	(1.4%)
D/R Load	(0.0%)	0	0	(0.0%)

