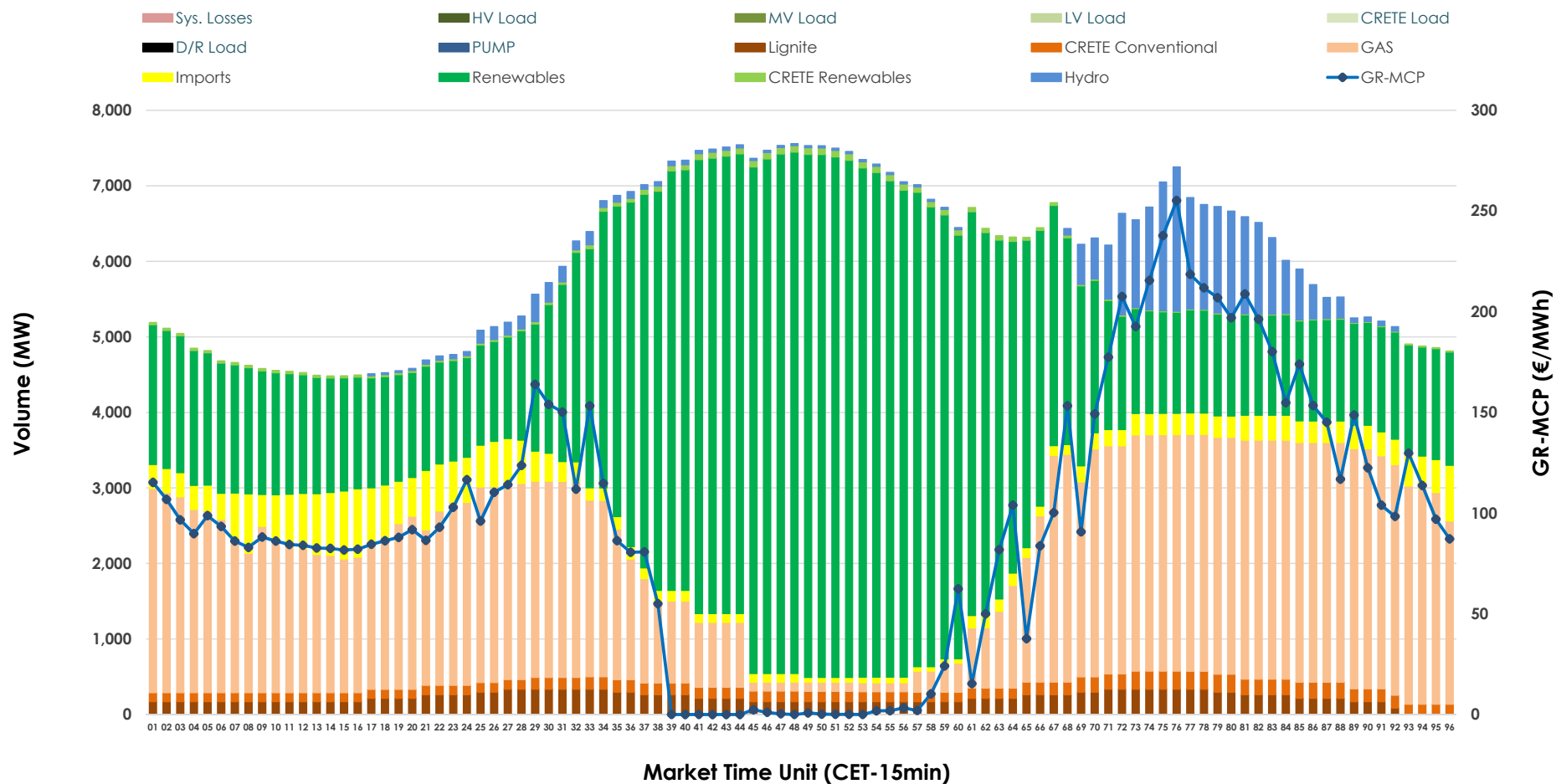


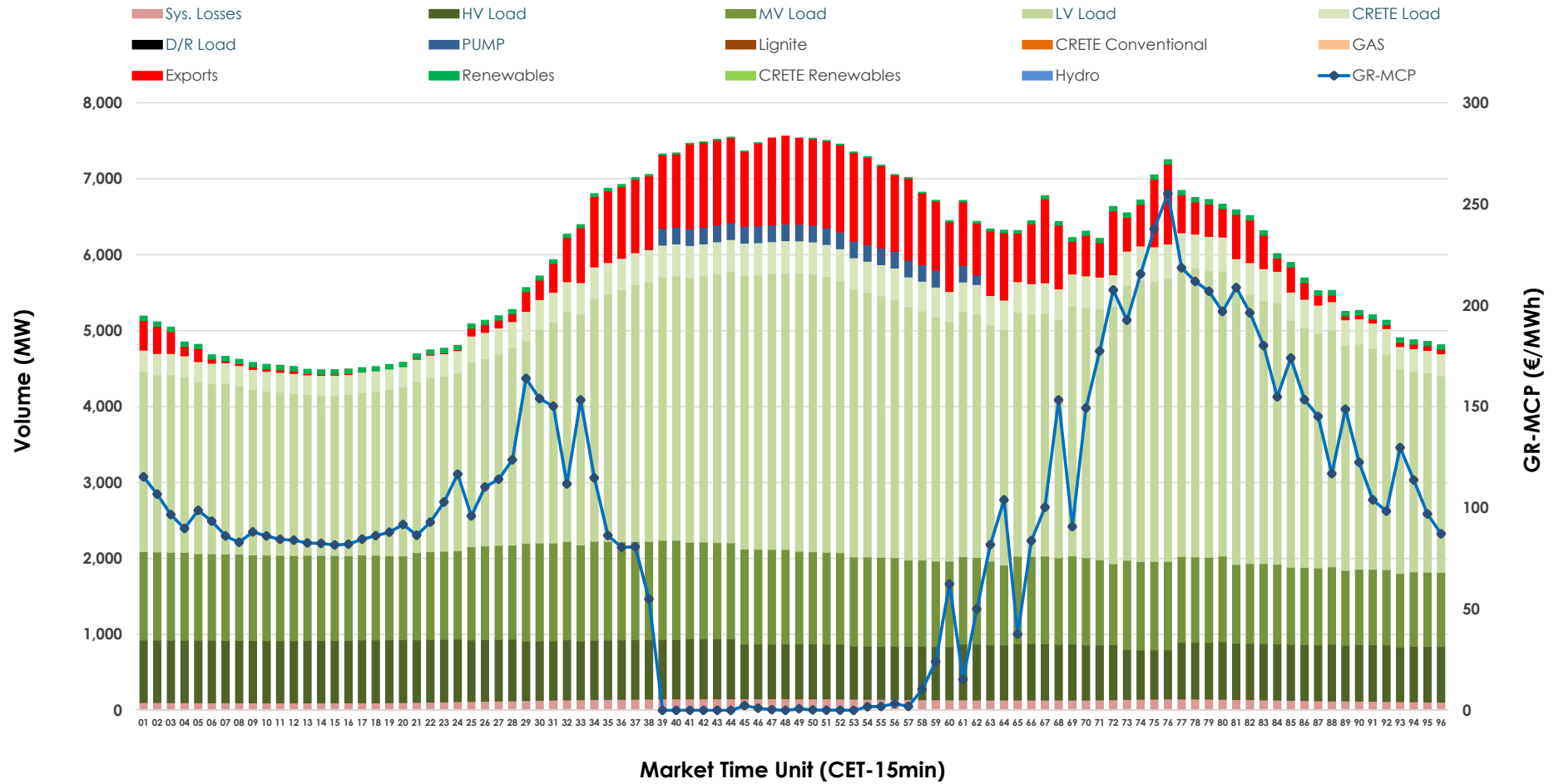


Day-Ahead Market Outlook

04.10.2025 Day-Ahead Market - Sell



04.10.2025 Day-Ahead Market - Buy



GR Bidding Zone Weekly Figures

Delivery Day	28.09	29.09	30.09	01.10	02.10	03.10	04.10
	↗ 17%	↗ 35%	↗ 2%	↘ -15%	↘ -2%	↘ -26%	↗ 7%
Avg.MCP (€/MWh)	105.25	141.58	144.28	122.92	120.35	88.90	94.93
Max.MCP (€/MWh)	194.22	425.83	367.91	381.39	235.24	161.35	255.19
Min.MCP (€/MWh)	17.60	79.86	54.21	68.00	81.17	0.00	0.00
	↘ -20%	↗ 2%	↗ 9%	↘ -3%	↗ 0%	↗ 8%	↘ -9%
Tot.Vol(GWh)	270.06	275.33	300.33	291.57	292.94	317.55	289.09

Trades by Order Type

Delivery Day		28.09	29.09	30.09	01.10	02.10	03.10	04.10	
Ord Price Type		Sell & Buy Trades in (GWh) per Price Type							(%)
PPT	(S)	37.540	35.907	44.048	44.485	42.407	60.427	48.063	33.25%
HBD	(S)	53.709	47.972	54.064	47.185	49.949	67.300	63.642	44.03%
BLK	(S)	30.343	42.499	41.669	45.862	45.670	30.920	30.576	21.15%
CPL	(S)	13.440	11.285	10.386	8.253	8.446	0.129	2.263	1.57%
PPT	(B)	14.853	11.794	13.775	14.919	15.490	15.062	14.720	10.18%
HBD	(B)	118.838	123.436	132.095	127.299	130.628	130.664	121.947	84.37%
BLK	(B)	0.000	0.000	0.000	0.000	0.000	0.000	0.000	0.00%
CPL	(B)	1.341	2.433	4.297	3.567	0.354	13.051	7.878	5.45%
		Sell & Buy Orders Traded per Price Type							(%)
PPT	(S)	483	451	445	1465	1399	1456	1436	36.19%
HBD	(S)	728	677	683	2322	2453	2347	2519	63.48%
BLK	(S)	14	23	17	23	12	13	13	0.33%
PPT	(B)	625	560	566	2175	2171	2196	2189	35.98%
HBD	(B)	1134	1021	990	3985	3833	4017	3895	64.02%
BLK	(B)	0	0	0	0	0	0	0	0.00%

MCP	Market Clearing Price (€/MWh)
PPT	Priority Price-Taking
HBD	Hybrid
BLK	Block
CPL	Market Coupling Flow

Trade's Volume Mix

		Sell - MWh	Buy - MWh	
Lignite	(3.7%)	5,345	0	(0.0%)
Crete Conv.	(2.6%)	3,711	0	(0.0%)
Gas	(33.1%)	47,785	0	(0.0%)
Hydro	(4.2%)	6,087	0	(0.0%)
Imports	(5.4%)	7,746		
RES	(50.4%)	72,923	968	(0.7%)
Crete RES	(0.7%)	949	0	(0.0%)
HV Load	(0.0%)	0	18,260	(12.6%)
MV Load	(0.0%)	0	27,691	(19.2%)
LV Load	(0.0%)	0	72,125	(49.9%)
Crete Load	(0.0%)	0	8,845	(6.1%)
Pumping	(0.0%)	0	1,244	(0.9%)
Exports			12,273	(8.5%)
Sys.Losses	(0.0%)	0	3,139	(2.2%)
D/R Load	(0.0%)	0	0	(0.0%)

