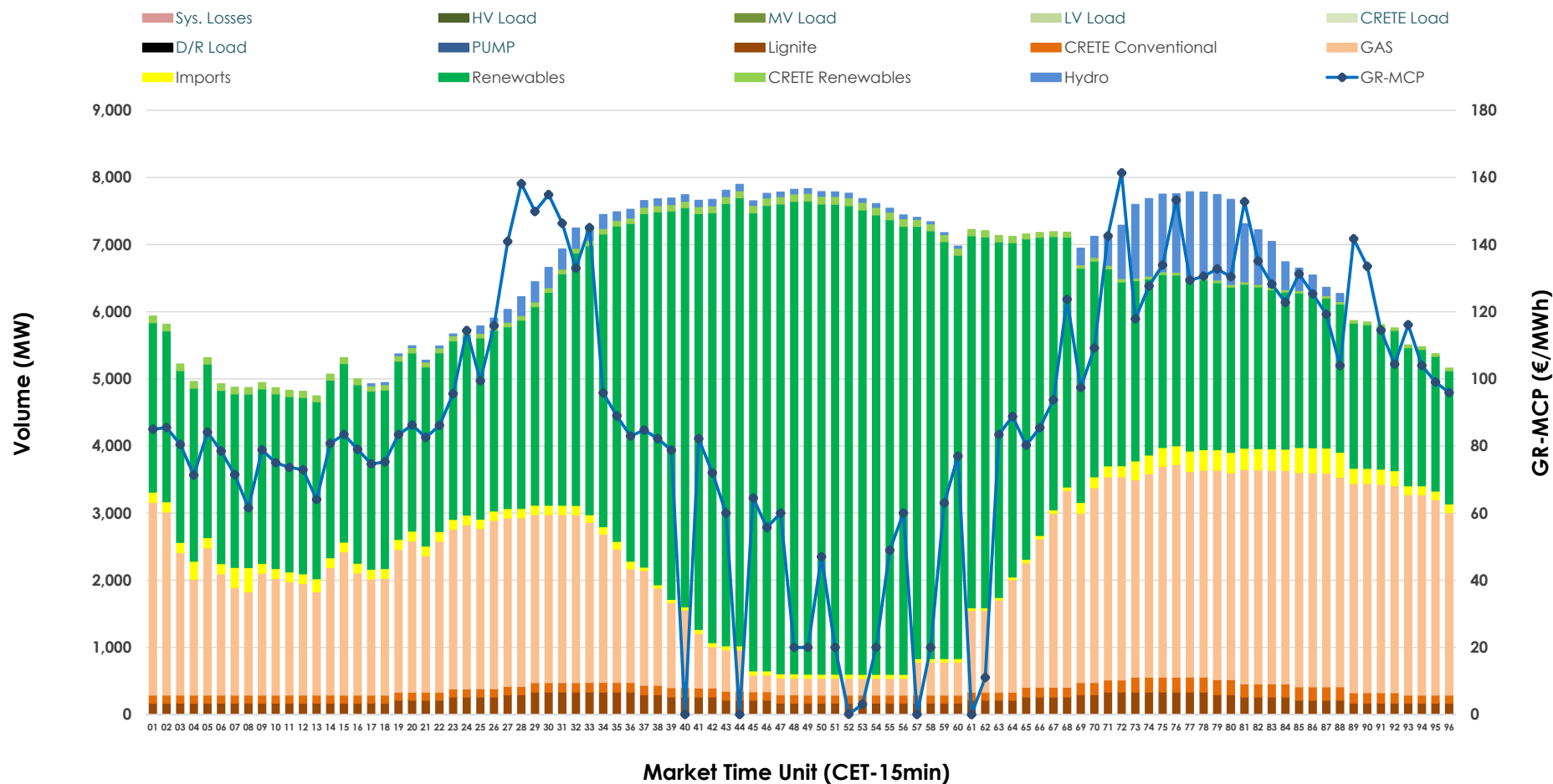


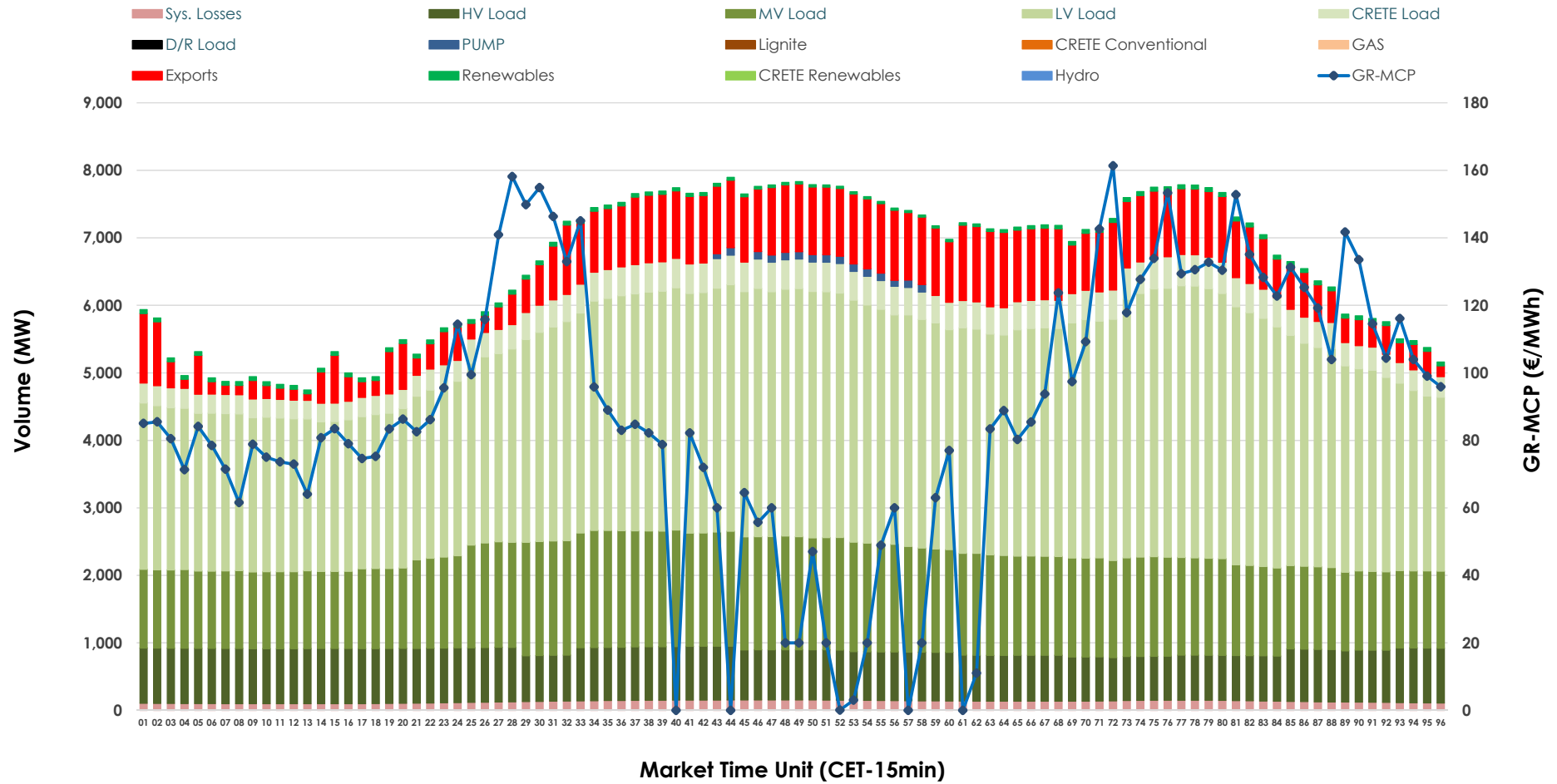


Day-Ahead Market Outlook

03.10.2025 Day-Ahead Market - Sell



03.10.2025 Day-Ahead Market - Buy



GR Bidding Zone Weekly Figures

Delivery Day	27.09	28.09	29.09	30.09	01.10	02.10	03.10
	➔ 0%	↗ 17%	↑ 35%	↗ 2%	↘ -15%	↘ -2%	↘ -26%
Avg.MCP (€/MWh)	90.30	105.25	141.58	144.28	122.92	120.35	88.90
Max.MCP (€/MWh)	147.50	194.22	425.83	367.91	381.39	235.24	161.35
Min.MCP (€/MWh)	37.61	17.60	79.86	54.21	68.00	81.17	0.00
	↘ -3%	↘ -20%	↗ 2%	↗ 9%	↘ -3%	➔ 0%	↗ 8%
Tot.Vol(GWh)	336.75	270.06	275.33	300.33	291.57	292.94	317.55

Trades by Order Type

Delivery Day		27.09	28.09	29.09	30.09	01.10	02.10	03.10	
Ord Price Type		Sell & Buy Trades in (GWh) per Price Type							(%)
PPT	(S)	68.668	37.540	35.907	44.048	44.485	42.407	60.427	38.06%
HBD	(S)	71.137	53.709	47.972	54.064	47.185	49.949	67.300	42.39%
BLK	(S)	28.476	30.343	42.499	41.669	45.862	45.670	30.920	19.47%
CPL	(S)	0.096	13.440	11.285	10.386	8.253	8.446	0.129	0.08%
PPT	(B)	16.902	14.853	11.794	13.775	14.919	15.490	15.062	9.49%
HBD	(B)	132.362	118.838	123.436	132.095	127.299	130.628	130.664	82.29%
BLK	(B)	0.000	0.000	0.000	0.000	0.000	0.000	0.000	0.00%
CPL	(B)	19.112	1.341	2.433	4.297	3.567	0.354	13.051	8.22%
		Sell & Buy Orders Traded per Price Type							(%)
PPT	(S)	455	483	451	445	1465	1399	1456	38.16%
HBD	(S)	693	728	677	683	2322	2453	2347	61.50%
BLK	(S)	15	14	23	17	23	12	13	0.34%
PPT	(B)	676	625	560	566	2175	2171	2196	35.35%
HBD	(B)	1262	1134	1021	990	3985	3833	4017	64.65%
BLK	(B)	0	0	0	0	0	0	0	0.00%

MCP	Market Clearing Price (€/MWh)
PPT	Priority Price-Taking
HBD	Hybrid
BLK	Block
CPL	Market Coupling Flow

Trade's Volume Mix

		Sell - MWh	Buy - MWh	
Lignite	(3.5%)	5,536	0	(0.0%)
Crete Conv.	(2.2%)	3,431	0	(0.0%)
Gas	(29.9%)	47,480	0	(0.0%)
Hydro	(3.1%)	4,852	0	(0.0%)
Imports	(2.3%)	3,645		
RES	(57.9%)	91,968	1,209	(0.8%)
Crete RES	(1.2%)	1,864	0	(0.0%)
HV Load	(0.0%)	0	18,047	(11.4%)
MV Load	(0.0%)	0	34,180	(21.5%)
LV Load	(0.0%)	0	75,393	(47.5%)
Crete Load	(0.0%)	0	9,139	(5.8%)
Pumping	(0.0%)	0	397	(0.2%)
Exports			17,273	(10.9%)
Sys.Losses	(0.0%)	0	3,139	(2.0%)
D/R Load	(0.0%)	0	0	(0.0%)

