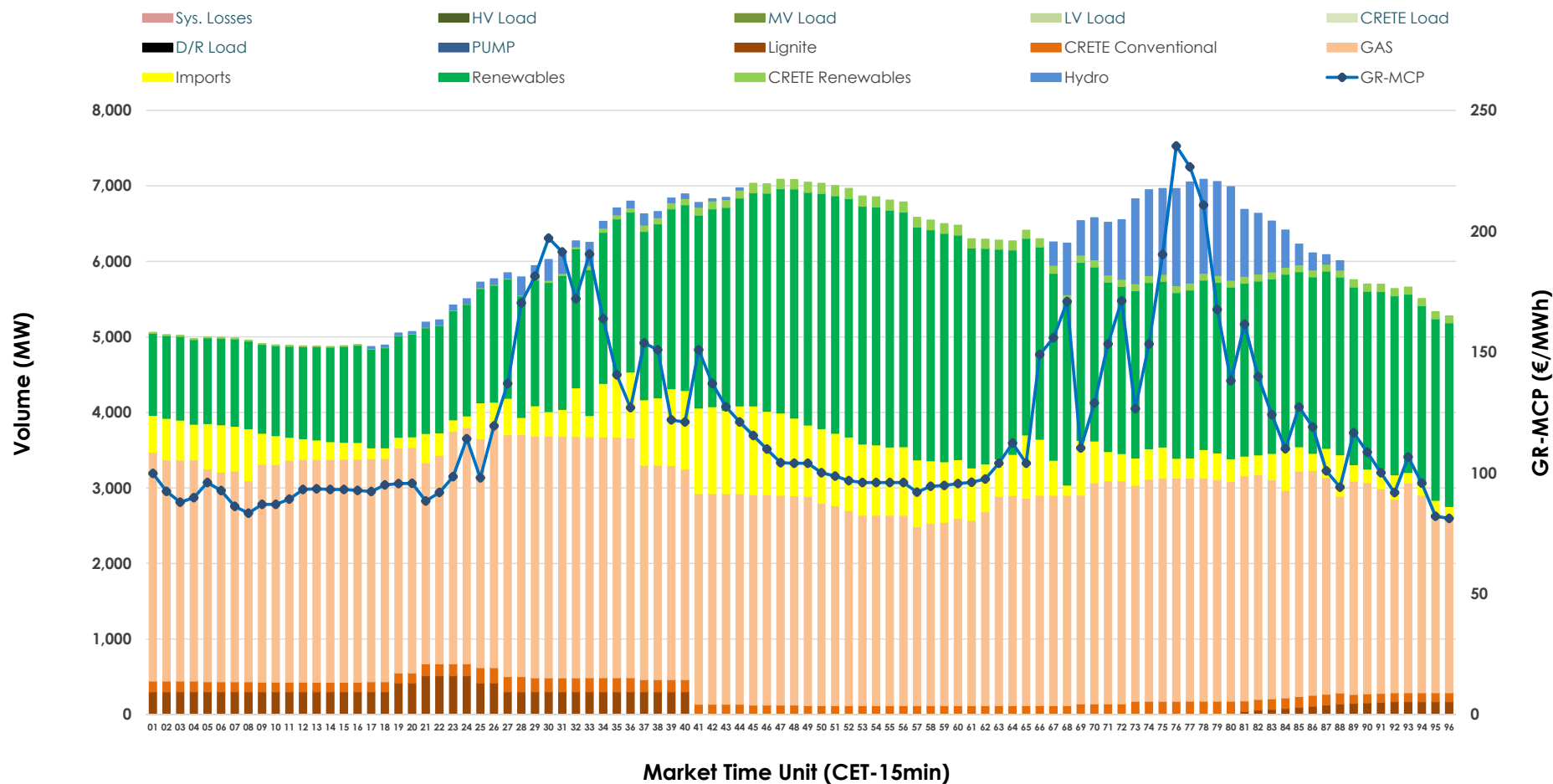


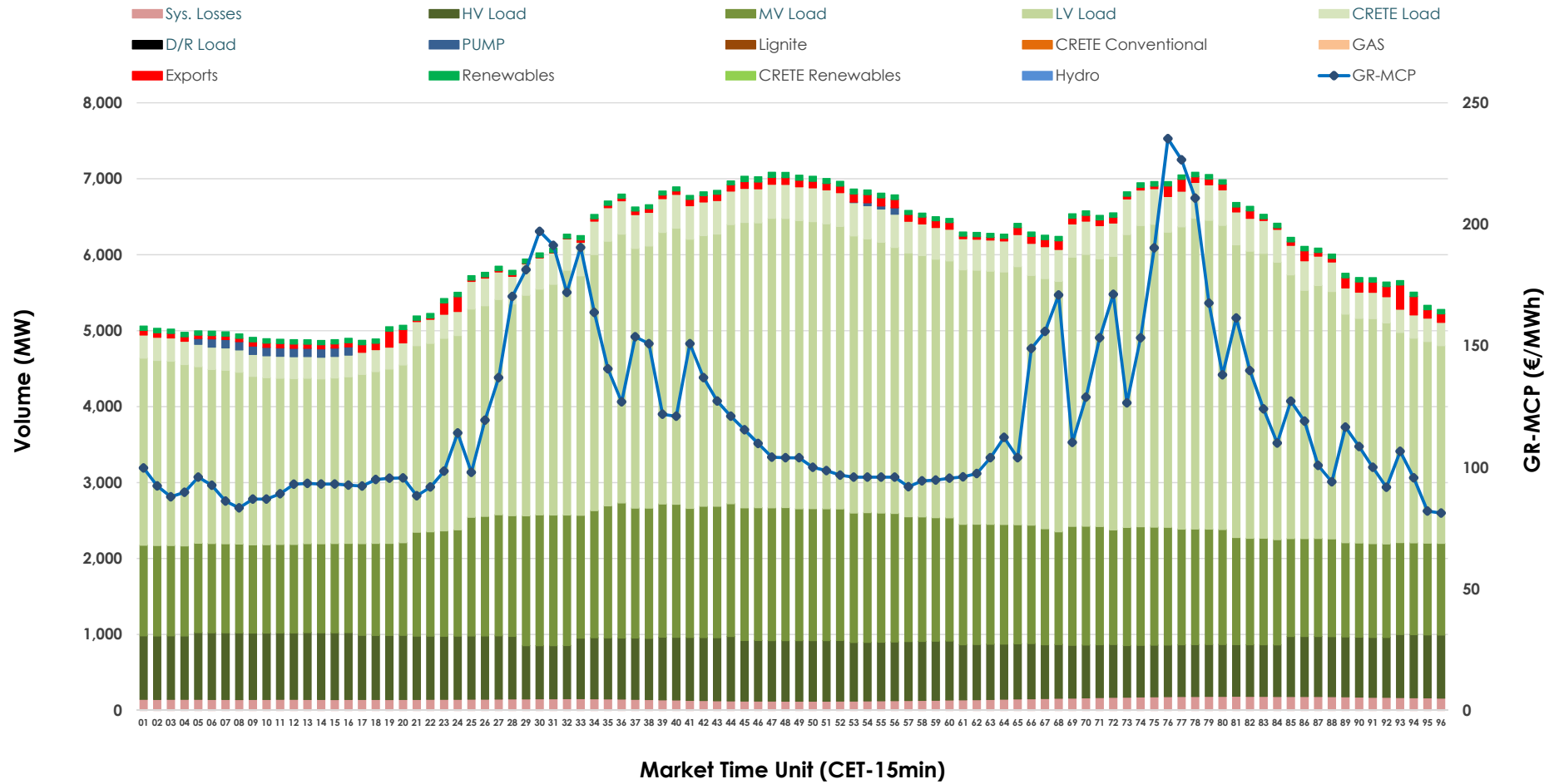


## Day-Ahead Market Outlook

02.10.2025 Day-Ahead Market - Sell



## 02.10.2025 Day-Ahead Market - Buy



### GR Bidding Zone Weekly Figures

Delivery Day	26.09	27.09	28.09	29.09	30.09	01.10	02.10
	↗ 4%	→ 0%	↗ 17%	↑ 35%	↗ 2%	↘ -15%	↘ -2%
Avg.MCP (€/MWh)	89.91	90.30	105.25	141.58	144.28	122.92	120.35
Max.MCP (€/MWh)	132.44	147.50	194.22	425.83	367.91	381.39	235.24
Min.MCP (€/MWh)	30.00	37.61	17.60	79.86	54.21	68.00	81.17
	↗ 11%	↘ -3%	↘ -20%	↗ 2%	↗ 9%	↘ -3%	→ 0%
Tot.Vol(GWh)	347.59	336.75	270.06	275.33	300.33	291.57	292.94

### Trades by Order Type

Delivery Day		26.09	27.09	28.09	29.09	30.09	01.10	02.10	
Ord Price Type		Sell & Buy Trades in (GWh) per Price Type							(%)
PPT	(S)	75.145	68.668	37.540	35.907	44.048	44.485	42.407	28.95%
HBD	(S)	70.188	71.137	53.709	47.972	54.064	47.185	49.949	34.10%
BLK	(S)	28.465	28.476	30.343	42.499	41.669	45.862	45.670	31.18%
CPL	(S)	0.000	0.096	13.440	11.285	10.386	8.253	8.446	5.77%
PPT	(B)	17.349	16.902	14.853	11.794	13.775	14.919	15.490	10.58%
HBD	(B)	137.990	132.362	118.838	123.436	132.095	127.299	130.628	89.18%
BLK	(B)	0.000	0.000	0.000	0.000	0.000	0.000	0.000	0.00%
CPL	(B)	18.458	19.112	1.341	2.433	4.297	3.567	0.354	0.24%
		Sell & Buy Orders Traded per Price Type							(%)
PPT	(S)	444	455	483	451	445	1465	1399	36.21%
HBD	(S)	623	693	728	677	683	2322	2453	63.48%
BLK	(S)	15	15	14	23	17	23	12	0.31%
PPT	(B)	693	676	625	560	566	2175	2171	36.16%
HBD	(B)	1215	1262	1134	1021	990	3985	3833	63.84%
BLK	(B)	0	0	0	0	0	0	0	0.00%

<b>MCP</b>	Market Clearing Price (€/MWh)
<b>PPT</b>	Priority Price-Taking
<b>HBD</b>	Hybrid
<b>BLK</b>	Block
<b>CPL</b>	Market Coupling Flow

### Trade's Volume Mix

		Sell - MWh	Buy - MWh	
Lignite	(2.6%)	3,857	0	(0.0%)
Crete Conv.	(2.3%)	3,425	0	(0.0%)
Gas	(46.6%)	68,185	0	(0.0%)
Hydro	(3.3%)	4,849	0	(0.0%)
Imports	(8.8%)	12,962		
RES	(35.1%)	51,443	1,356	(0.9%)
Crete RES	(1.2%)	1,752	0	(0.0%)
HV Load	(0.0%)	0	18,862	(12.9%)
MV Load	(0.0%)	0	35,461	(24.2%)
LV Load	(0.0%)	0	75,652	(51.6%)
Crete Load	(0.0%)	0	9,316	(6.4%)
Pumping	(0.0%)	0	364	(0.2%)
Exports			1,820	(1.2%)
Sys.Losses	(0.0%)	0	3,640	(2.5%)
D/R Load	(0.0%)	0	0	(0.0%)

