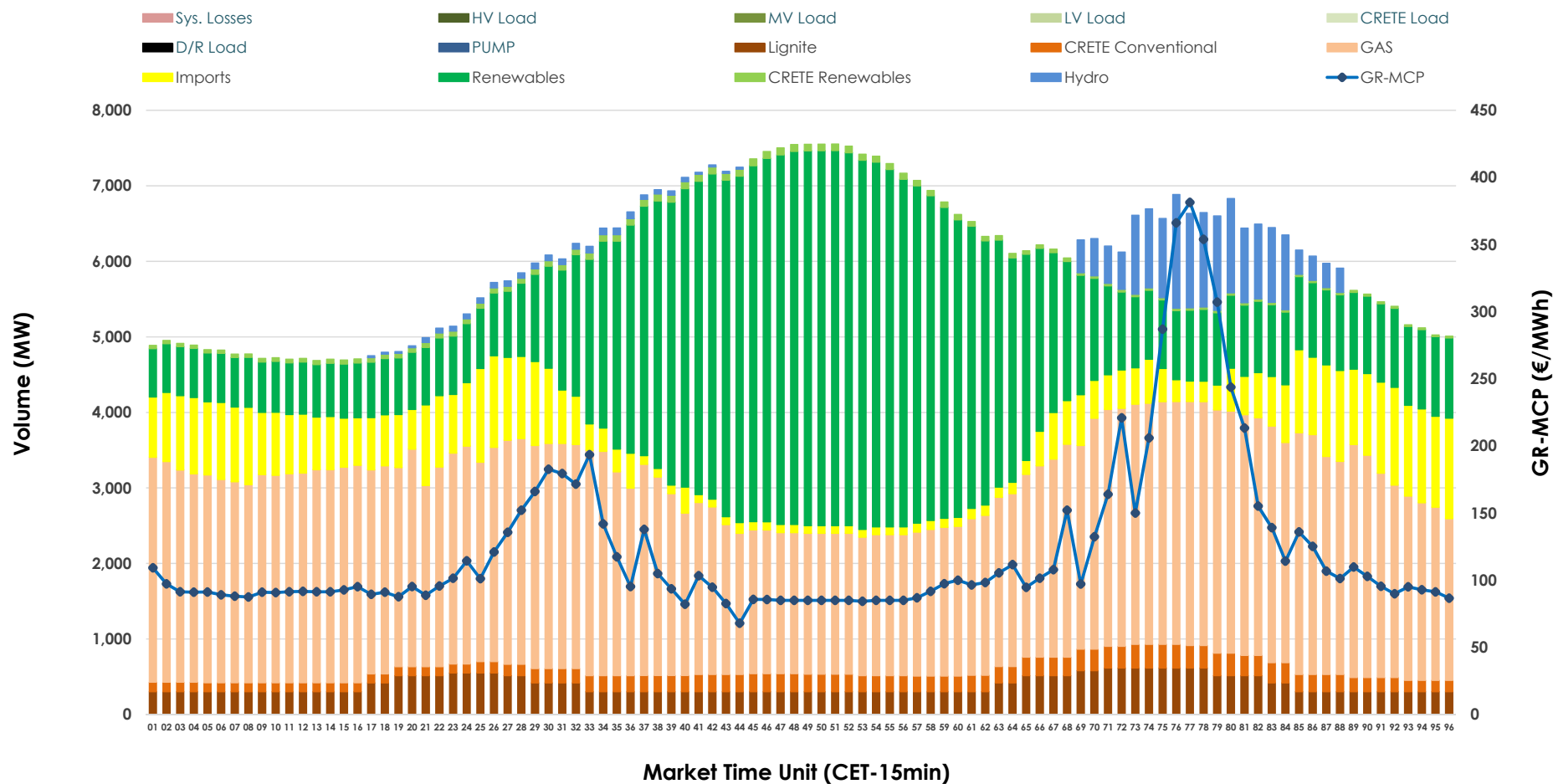


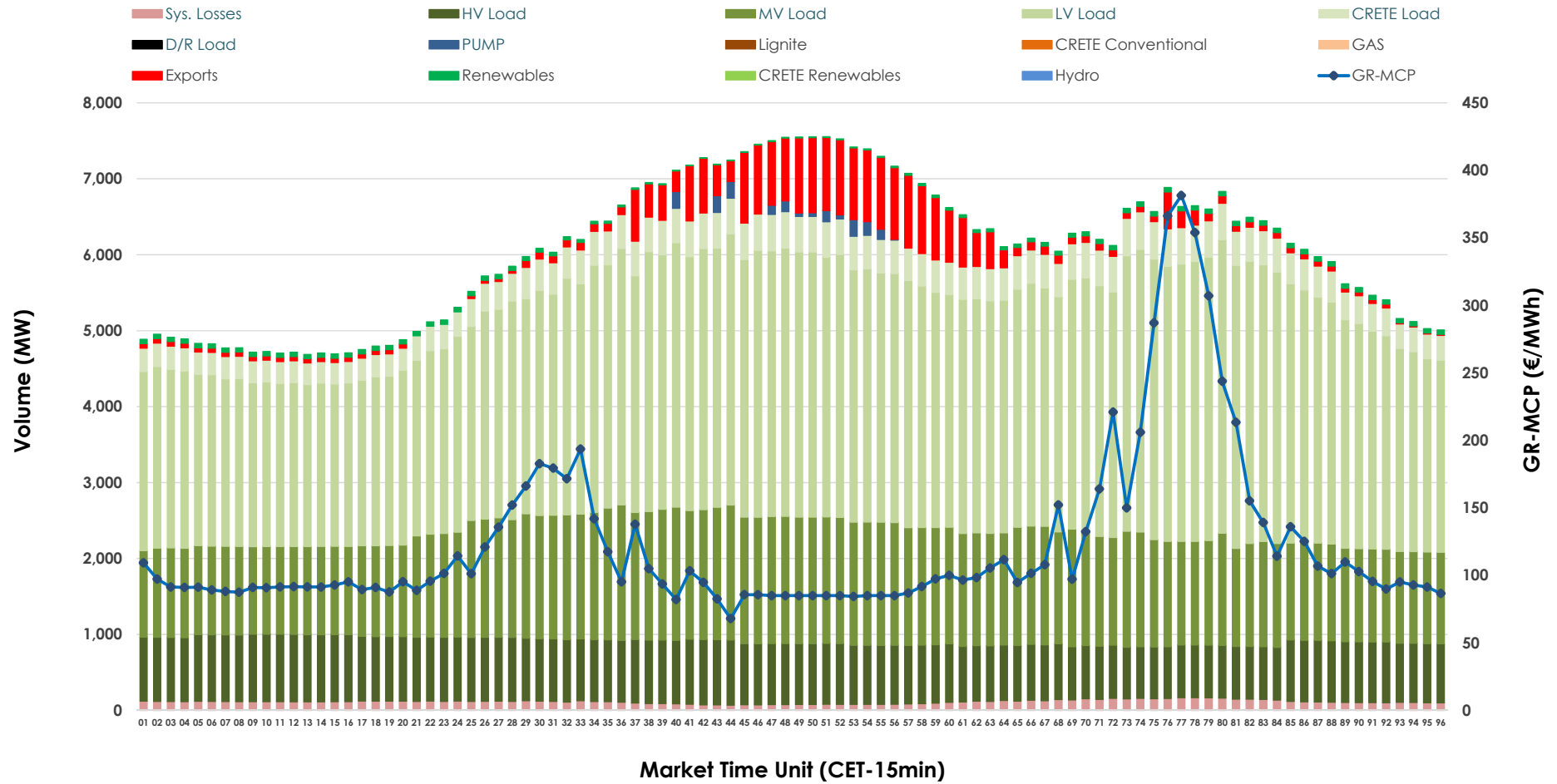


Day-Ahead Market Outlook

01.10.2025 Day-Ahead Market - Sell



01.10.2025 Day-Ahead Market - Buy



GR Bidding Zone Weekly Figures

Delivery Day	25.09	26.09	27.09	28.09	29.09	30.09	01.10
	⬇️ -13%	⬆️ 4%	➡️ 0%	⬆️ 17%	⬆️ 35%	⬆️ 2%	⬇️ -15%
Avg.MCP (€/MWh)	86.72	89.91	90.30	105.25	141.58	144.28	122.92
Max.MCP (€/MWh)	141.97	132.44	147.50	194.22	425.83	367.91	381.39
Min.MCP (€/MWh)	16.00	30.00	37.61	17.60	79.86	54.21	68.00
	➡️ 0%	⬆️ 11%	⬇️ -3%	⬇️ -20%	⬆️ 2%	⬆️ 9%	⬇️ -3%
Tot.Vol(GWh)	313.94	347.59	336.75	270.06	275.33	300.33	291.57

Trades by Order Type

Delivery Day		25.09	26.09	27.09	28.09	29.09	30.09	01.10	
Ord Price Type		Sell & Buy Trades in (GWh) per Price Type							(%)
PPT	(S)	56.009	75.145	68.668	37.540	35.907	44.048	44.485	30.51%
HBD	(S)	59.948	70.188	71.137	53.709	47.972	54.064	47.185	32.37%
BLK	(S)	31.484	28.465	28.476	30.343	42.499	41.669	45.862	31.46%
CPL	(S)	9.530	0.000	0.096	13.440	11.285	10.386	8.253	5.66%
PPT	(B)	16.971	17.349	16.902	14.853	11.794	13.775	14.919	10.23%
HBD	(B)	138.053	137.990	132.362	118.838	123.436	132.095	127.299	87.32%
BLK	(B)	0.000	0.000	0.000	0.000	0.000	0.000	0.000	0.00%
CPL	(B)	1.947	18.458	19.112	1.341	2.433	4.297	3.567	2.45%
		Sell & Buy Orders Traded per Price Type							(%)
PPT	(S)	443	444	455	483	451	445	1465	38.45%
HBD	(S)	684	623	693	728	677	683	2322	60.94%
BLK	(S)	14	15	15	14	23	17	23	0.60%
PPT	(B)	671	693	676	625	560	566	2175	35.31%
HBD	(B)	1174	1215	1262	1134	1021	990	3985	64.69%
BLK	(B)	0	0	0	0	0	0	0	0.00%

MCP	Market Clearing Price (€/MWh)
PPT	Priority Price-Taking
HBD	Hybrid
BLK	Block
CPL	Market Coupling Flow

Trade's Volume Mix

		Sell - MWh	Buy - MWh	
Lignite	(6.4%)	9,295	0	(0.0%)
Crete Conv.	(3.3%)	4,801	0	(0.0%)
Gas	(43.1%)	62,800	0	(0.0%)
Hydro	(3.2%)	4,610	0	(0.0%)
Imports	(9.7%)	14,149		
RES	(33.4%)	48,760	1,036	(0.7%)
Crete RES	(0.9%)	1,370	0	(0.0%)
HV Load	(0.0%)	0	19,148	(13.1%)
MV Load	(0.0%)	0	34,474	(23.6%)
LV Load	(0.0%)	0	71,984	(49.4%)
Crete Load	(0.0%)	0	9,625	(6.6%)
Pumping	(0.0%)	0	442	(0.3%)
Exports			6,339	(4.3%)
Sys.Losses	(0.0%)	0	2,737	(1.9%)
D/R Load	(0.0%)	0	0	(0.0%)

