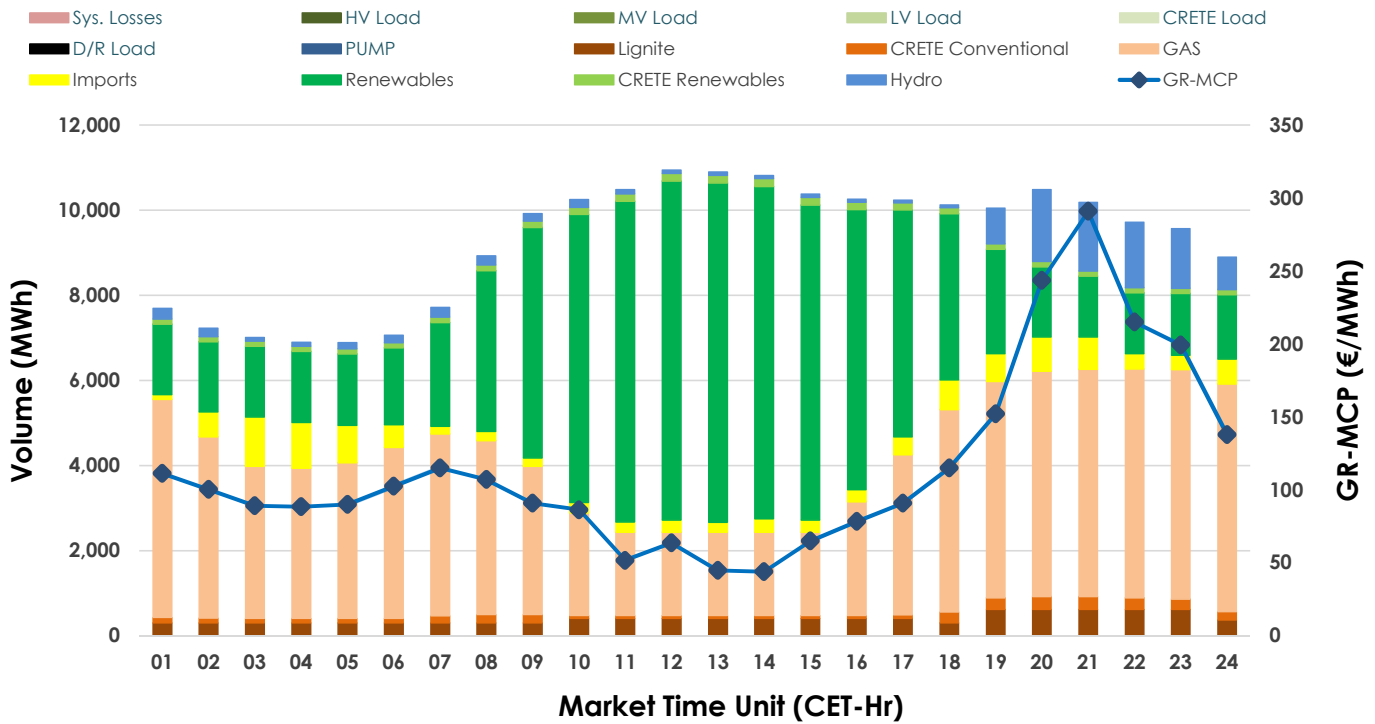
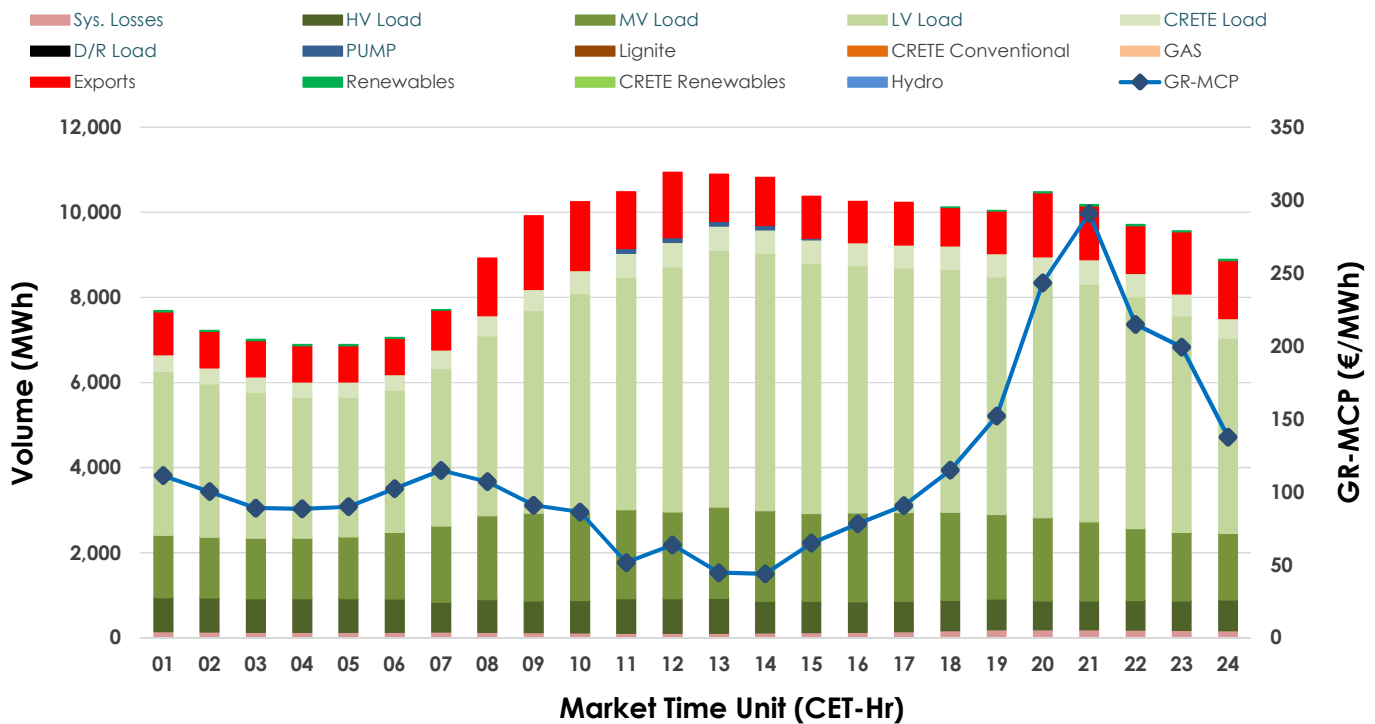


Day-Ahead Market Outlook

01.07.2025 Day-Ahead Market - Sell



01.07.2025 Day-Ahead Market - Buy



GR Bidding Zone Weekly Figures

| Delivery Day | 25.06 | 26.06 | 27.06 | 28.06 | 29.06 | 30.06 | 01.07 |
|-----------------|--------|--------|--------|---------|---------|--------|--------|
| | ⬆️ 5% | ⬆️ 6% | ⬇️ -2% | ⬇️ -42% | ⬇️ -12% | ⬆️ 69% | ⬆️ 21% |
| Avg.MCP (€/MWh) | 106.63 | 113.19 | 111.26 | 64.18 | 56.33 | 95.24 | 115.53 |
| Max.MCP (€/MWh) | 248.76 | 237.36 | 177.50 | 127.19 | 118.07 | 185.00 | 290.86 |
| Min.MCP (€/MWh) | 20.00 | 37.70 | 54.95 | 0.01 | 0.00 | 27.63 | 43.92 |
| | ⬆️ 7% | ⬆️ 6% | ⬆️ 2% | ⬇️ -6% | ⬇️ -8% | ⬆️ 12% | ⬆️ 1% |
| Tot.Vol(GWh) | 417.63 | 443.69 | 452.43 | 426.81 | 392.27 | 439.88 | 445.23 |

Trades by Order Type

| Delivery Day | 25.06 | 26.06 | 27.06 | 28.06 | 29.06 | 30.06 | 01.07 |
|--------------|---|---------|---------|---------|---------|---------|---------|
| Order P.T | Sell & Buy Trades in (GWh) per Price Type | | | | | | |
| PPT (S) | 84.742 | 87.533 | 89.616 | 87.402 | 94.251 | 101.275 | 84.381 |
| HBD (S) | 67.692 | 73.367 | 77.410 | 67.517 | 62.837 | 73.076 | 74.725 |
| BLK (S) | 49.373 | 55.319 | 55.068 | 33.931 | 28.011 | 45.591 | 56.744 |
| CPL (S) | 7.007 | 5.627 | 4.124 | 24.554 | 11.038 | | 6.767 |
| PPT (B) | 19.302 | 19.306 | 20.250 | 19.795 | 18.209 | 19.427 | 19.929 |
| HBD (B) | 176.138 | 186.659 | 193.992 | 184.269 | 163.692 | 174.756 | 186.340 |
| BLK (B) | | | | | | | |
| CPL (B) | 13.373 | 15.881 | 11.976 | 9.341 | 14.236 | 25.758 | 16.348 |
| Order P.T | Sell & Buy Orders Traded per Price Type | | | | | | |
| PPT (S) | 531 | 512 | 513 | 558 | 499 | 503 | 470 |
| HBD (S) | 938 | 959 | 977 | 839 | 676 | 801 | 939 |
| BLK (S) | 264 | 317 | 304 | 163 | 151 | 247 | 292 |
| PPT (B) | 702 | 707 | 708 | 707 | 745 | 664 | 711 |
| HBD (B) | 1283 | 1300 | 1287 | 1341 | 1424 | 1381 | 1318 |
| BLK (B) | | | | | | | |

| | |
|-----|-------------------------------|
| MCP | Market Clearing Price (€/MWh) |
| PPT | Priority Price-Taking |
| HBD | Hybrid |
| BLK | Block |
| CPL | Market Coupling Flow |

Trade's Volume Mix

| | Sell - MWh | Buy - MWh | |
|-------------|----------------|-----------|---------|
| Lignite | (4.4%) 9,687 | 0 | (0.0%) |
| Crete Conv. | (1.6%) 3,634 | 0 | (0.0%) |
| Gas | (41.0%) 91,373 | 0 | (0.0%) |
| Hydro | (4.5%) 10,118 | 0 | (0.0%) |
| Imports | (5.1%) 11,453 | | |
| RES | (41.7%) 92,942 | 307 | (0.1%) |
| Crete RES | (1.5%) 3,409 | 0 | (0.0%) |
| HV Load | (0.0%) 0 | 17,966 | (8.1%) |
| MV Load | (0.0%) 0 | 44,023 | (19.8%) |
| LV Load | (0.0%) 0 | 116,895 | (52.5%) |
| Crete Load | (0.0%) 0 | 11,860 | (5.3%) |
| Pumping | (0.0%) 0 | 480 | (0.2%) |
| Exports | | 27,574 | (12.4%) |
| Sys.Losses | (0.0%) 0 | 3,512 | (1.6%) |
| D/R Load | (0.0%) 0 | 0 | (0.0%) |

