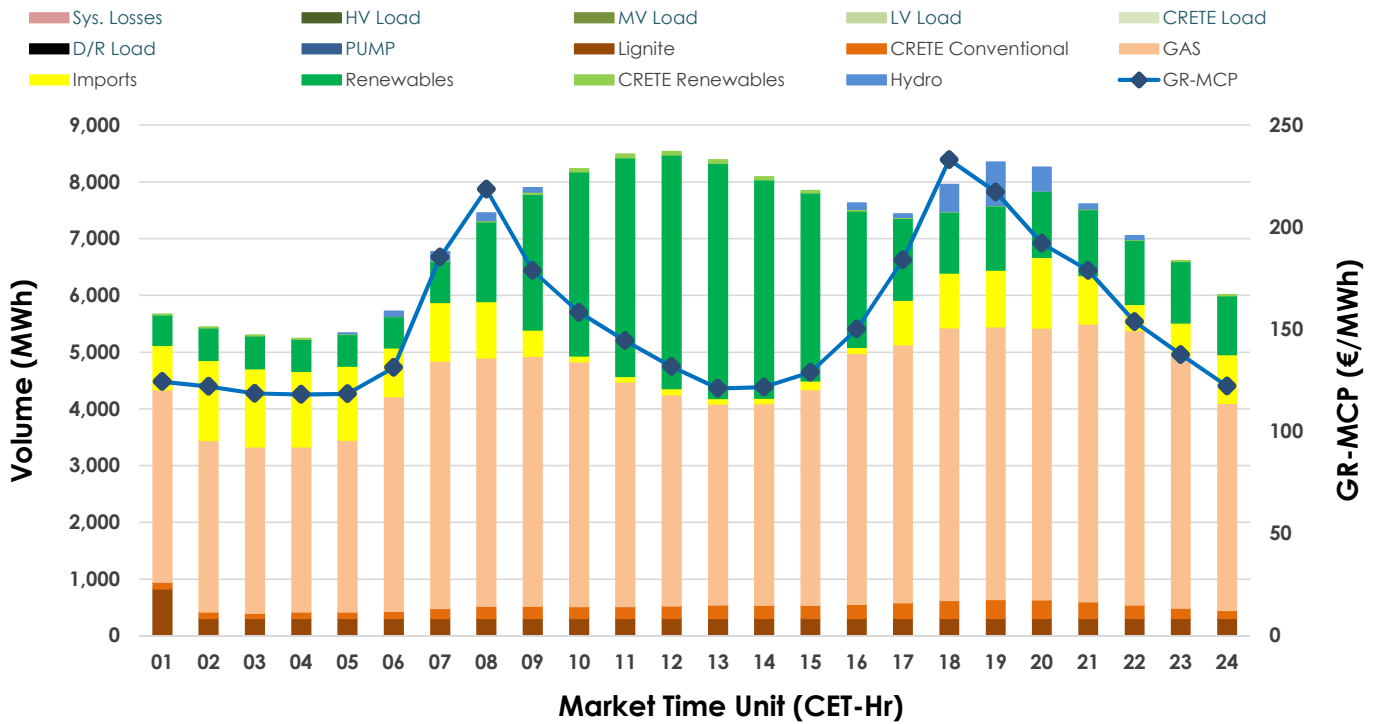
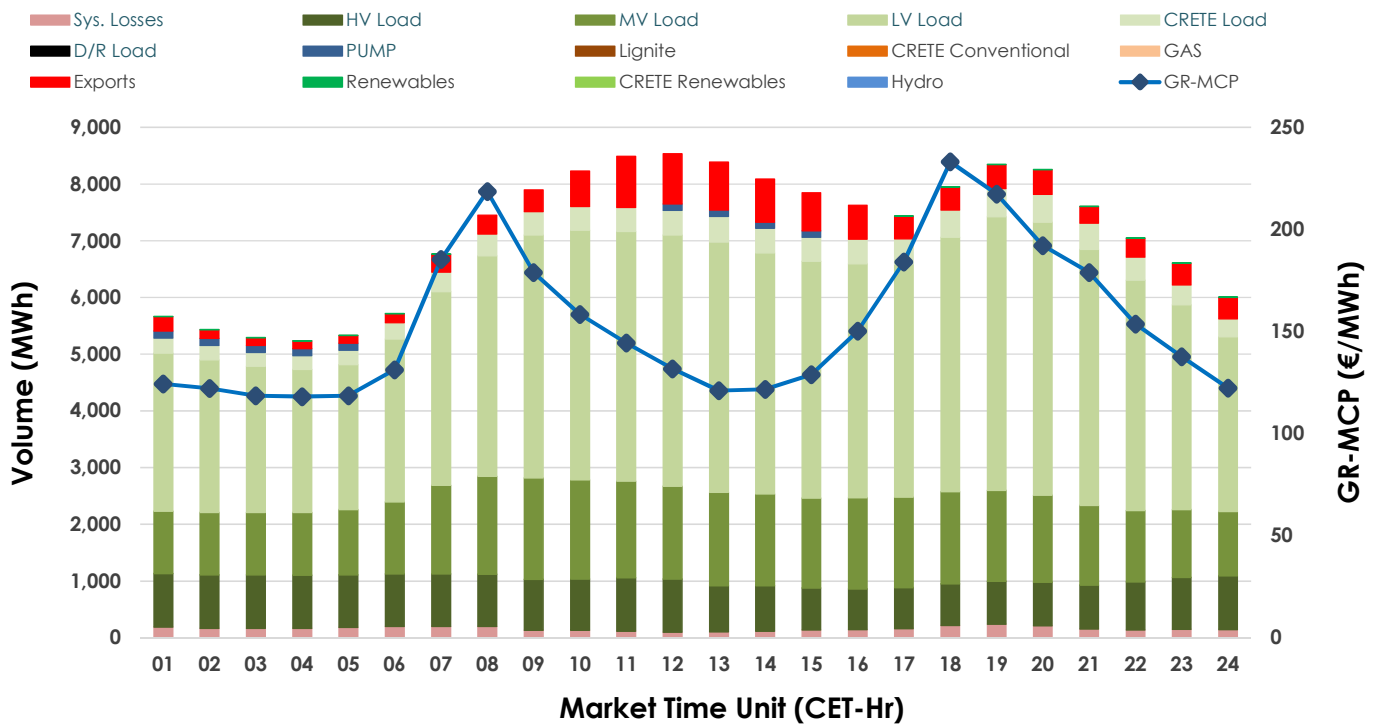


Day-Ahead Market Outlook

26.02.2025 Day-Ahead Market - Sell



26.02.2025 Day-Ahead Market - Buy



GR Bidding Zone Weekly Figures

| Delivery Day | 20.02 | 21.02 | 22.02 | 23.02 | 24.02 | 25.02 | 26.02 |
|-----------------|--------|--------|--------|--------|--------|--------|--------|
| | 📈 14% | 📉 -13% | 📉 -5% | 📈 5% | 📈 35% | 📈 5% | 📉 -26% |
| Avg.MCP (€/MWh) | 170.14 | 147.44 | 139.63 | 146.90 | 197.86 | 207.28 | 153.82 |
| Max.MCP (€/MWh) | 371.79 | 239.59 | 260.79 | 256.12 | 386.04 | 471.56 | 233.08 |
| Min.MCP (€/MWh) | 90.28 | 78.94 | 50.11 | 100.00 | 120.00 | 127.01 | 118.14 |
| | 📈 3% | 📉 -1% | 📉 -6% | 📉 -9% | 📈 10% | 📈 0% | 📉 -10% |
| Tot.Vol(GWh) | 408.83 | 403.88 | 378.93 | 346.43 | 381.53 | 381.74 | 342.61 |

Trades by Order Type

| Delivery Day | 20.02 | 21.02 | 22.02 | 23.02 | 24.02 | 25.02 | 26.02 |
|--------------|---|---------|---------|---------|---------|---------|---------|
| Order P.T | Sell & Buy Trades in (GWh) per Price Type | | | | | | |
| PPT (S) | 69.798 | 71.239 | 66.896 | 51.030 | 48.186 | 52.645 | 53.478 |
| HBD (S) | 71.637 | 68.868 | 63.738 | 48.347 | 44.326 | 51.531 | 45.112 |
| BLK (S) | 56.704 | 51.645 | 45.366 | 54.558 | 87.671 | 77.140 | 60.428 |
| CPL (S) | 6.278 | 10.186 | 13.463 | 19.279 | 10.582 | 9.553 | 12.288 |
| PPT (B) | 16.668 | 16.854 | 17.487 | 15.740 | 17.000 | 17.045 | 16.715 |
| HBD (B) | 168.617 | 172.678 | 163.172 | 153.052 | 160.632 | 163.017 | 153.743 |
| BLK (B) | | | | | | | |
| CPL (B) | 19.132 | 12.406 | 8.804 | 4.422 | 13.132 | 10.808 | 0.848 |
| | Sell & Buy Orders Traded per Price Type | | | | | | |
| PPT (S) | 403 | 426 | 445 | 437 | 493 | 477 | 454 |
| HBD (S) | 806 | 846 | 915 | 882 | 972 | 917 | 963 |
| BLK (S) | 263 | 237 | 220 | 261 | 407 | 374 | 289 |
| PPT (B) | 708 | 706 | 692 | 638 | 669 | 659 | 692 |
| HBD (B) | 1394 | 1315 | 1328 | 1260 | 1214 | 1307 | 1282 |
| BLK (B) | | | | | | | |

| | |
|-----|-------------------------------|
| MCP | Market Clearing Price (€/MWh) |
| PPT | Priority Price-Taking |
| HBD | Hybrid |
| BLK | Block |
| CPL | Market Coupling Flow |

Trade's Volume Mix

| | | Sell - MWh | Buy - MWh | |
|-------------|---------|------------|-----------|---------|
| Lignite | (4.5%) | 7,777 | 0 | (0.0%) |
| Crete Conv. | (3.0%) | 5,114 | 0 | (0.0%) |
| Gas | (56.2%) | 96,339 | 0 | (0.0%) |
| Hydro | (1.4%) | 2,425 | 0 | (0.0%) |
| Imports | (10.0%) | 17,049 | | |
| RES | (24.5%) | 42,040 | 94 | (0.1%) |
| Crete RES | (0.3%) | 563 | 0 | (0.0%) |
| HV Load | (0.0%) | 0 | 20,669 | (12.1%) |
| MV Load | (0.0%) | 0 | 34,796 | (20.3%) |
| LV Load | (0.0%) | 0 | 91,254 | (53.3%) |
| Crete Load | (0.0%) | 0 | 9,171 | (5.4%) |
| Pumping | (0.0%) | 0 | 1,065 | (0.6%) |
| Exports | | | 10,345 | (6.0%) |
| Sys.Losses | (0.0%) | 0 | 3,912 | (2.3%) |
| D/R Load | (0.0%) | 0 | 0 | (0.0%) |

