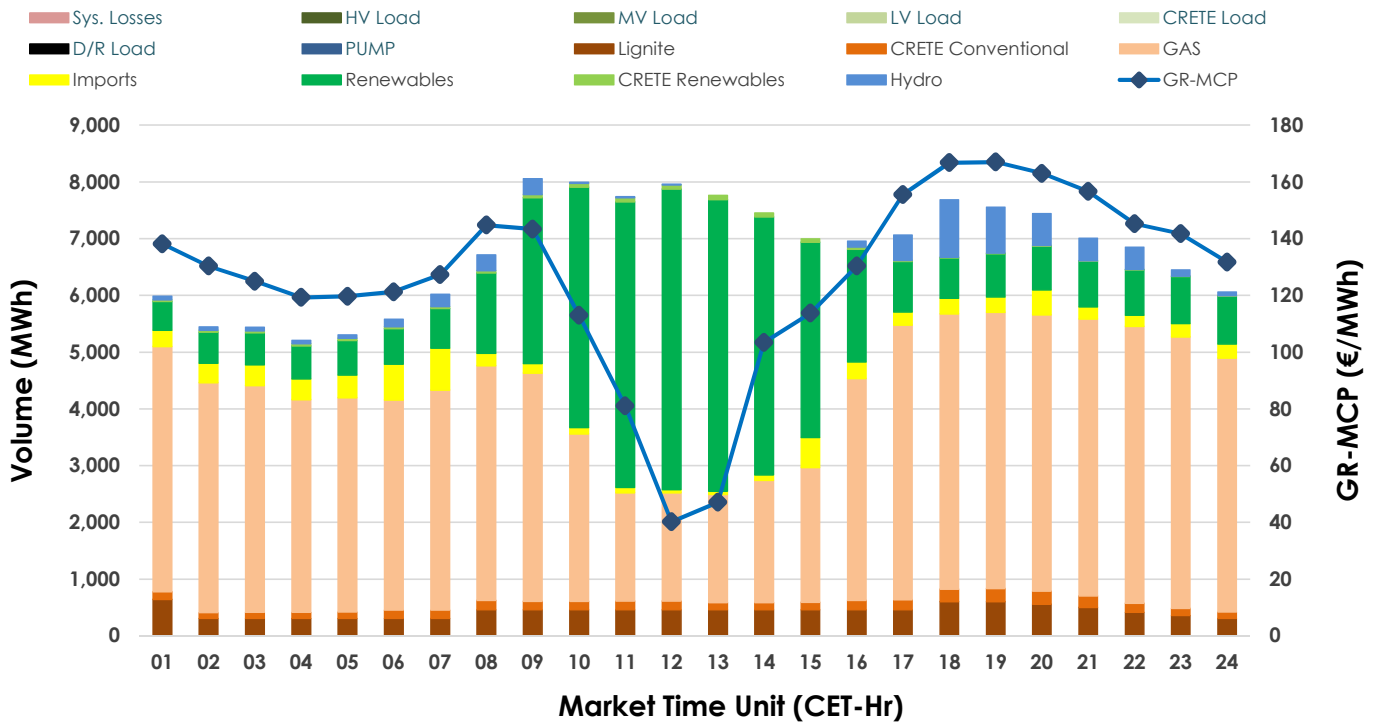
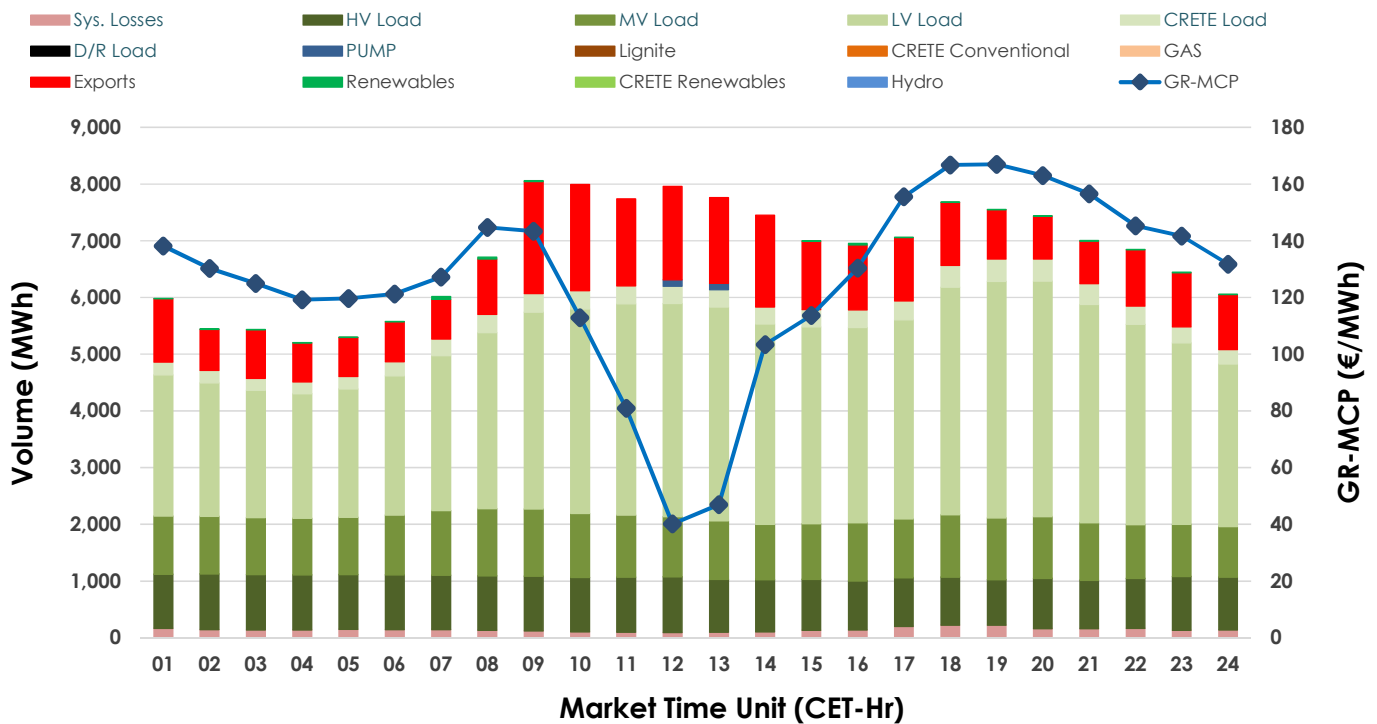


Day-Ahead Market Outlook

01.02.2025 Day-Ahead Market - Sell



01.02.2025 Day-Ahead Market - Buy



GR Bidding Zone Weekly Figures

| Delivery Day | 26.01 | 27.01 | 28.01 | 29.01 | 30.01 | 31.01 | 01.02 |
|-----------------|--------|--------|---------|--------|--------|--------|--------|
| | ⬆️ 1% | ⬆️ 12% | ⬇️ -12% | ⬆️ 1% | ⬆️ 10% | ➡️ 1% | ⬇️ -4% |
| Avg.MCP (€/MWh) | 118.56 | 133.08 | 117.13 | 118.79 | 130.92 | 131.63 | 126.05 |
| Max.MCP (€/MWh) | 143.28 | 188.32 | 148.31 | 165.94 | 176.91 | 200.01 | 166.97 |
| Min.MCP (€/MWh) | 94.10 | 90.12 | 61.80 | 45.94 | 97.82 | 39.70 | 40.19 |
| | ⬇️ -8% | ⬆️ 8% | ⬆️ 5% | ⬆️ 3% | ➡️ -1% | ⬇️ -5% | ⬇️ -5% |
| Tot.Vol(GWh) | 311.24 | 337.11 | 352.71 | 363.49 | 360.47 | 343.70 | 325.38 |

Trades by Order Type

| Delivery Day | 26.01 | 27.01 | 28.01 | 29.01 | 30.01 | 31.01 | 01.02 |
|--------------|---|---------|---------|---------|---------|---------|---------|
| Order P.T | Sell & Buy Trades in (GWh) per Price Type | | | | | | |
| PPT (S) | 45.428 | 46.201 | 55.362 | 64.680 | 61.241 | 52.946 | 51.837 |
| HBD (S) | 44.001 | 51.357 | 59.781 | 64.426 | 58.043 | 55.329 | 50.853 |
| BLK (S) | 52.022 | 57.092 | 50.972 | 50.076 | 56.701 | 59.457 | 58.355 |
| CPL (S) | 14.171 | 13.905 | 10.243 | 2.565 | 4.251 | 4.120 | 1.643 |
| PPT (B) | 13.994 | 13.704 | 14.176 | 14.387 | 15.476 | 15.053 | 15.933 |
| HBD (B) | 128.670 | 142.061 | 144.149 | 142.132 | 143.275 | 138.146 | 129.991 |
| BLK (B) | | | | | | | |
| CPL (B) | 12.958 | 12.791 | 18.033 | 25.228 | 21.485 | 18.653 | 16.765 |
| | Sell & Buy Orders Traded per Price Type | | | | | | |
| PPT (S) | 468 | 447 | 412 | 413 | 392 | 428 | 445 |
| HBD (S) | 810 | 868 | 910 | 827 | 843 | 869 | 890 |
| BLK (S) | 260 | 277 | 233 | 254 | 278 | 285 | 272 |
| PPT (B) | 731 | 650 | 651 | 702 | 702 | 680 | 680 |
| HBD (B) | 1278 | 1299 | 1294 | 1417 | 1322 | 1332 | 1310 |
| BLK (B) | | | | | | | |

| | |
|-----|-------------------------------|
| MCP | Market Clearing Price (€/MWh) |
| PPT | Priority Price-Taking |
| HBD | Hybrid |
| BLK | Block |
| CPL | Market Coupling Flow |

Trade's Volume Mix

| | | Sell - MWh | Buy - MWh | |
|-------------|---------|------------|-----------|---------|
| Lignite | (6.4%) | 10,338 | 0 | (0.0%) |
| Crete Conv. | (2.3%) | 3,707 | 0 | (0.0%) |
| Gas | (56.1%) | 91,218 | 0 | (0.0%) |
| Hydro | (3.1%) | 5,112 | 0 | (0.0%) |
| Imports | (4.2%) | 6,885 | | |
| RES | (27.4%) | 44,559 | 225 | (0.1%) |
| Crete RES | (0.5%) | 869 | 0 | (0.0%) |
| HV Load | (0.0%) | 0 | 22,217 | (13.7%) |
| MV Load | (0.0%) | 0 | 24,994 | (15.4%) |
| LV Load | (0.0%) | 0 | 77,879 | (47.9%) |
| Crete Load | (0.0%) | 0 | 7,153 | (4.4%) |
| Pumping | (0.0%) | 0 | 220 | (0.1%) |
| Exports | | | 26,497 | (16.3%) |
| Sys.Losses | (0.0%) | 0 | 3,503 | (2.2%) |
| D/R Load | (0.0%) | 0 | 0 | (0.0%) |

