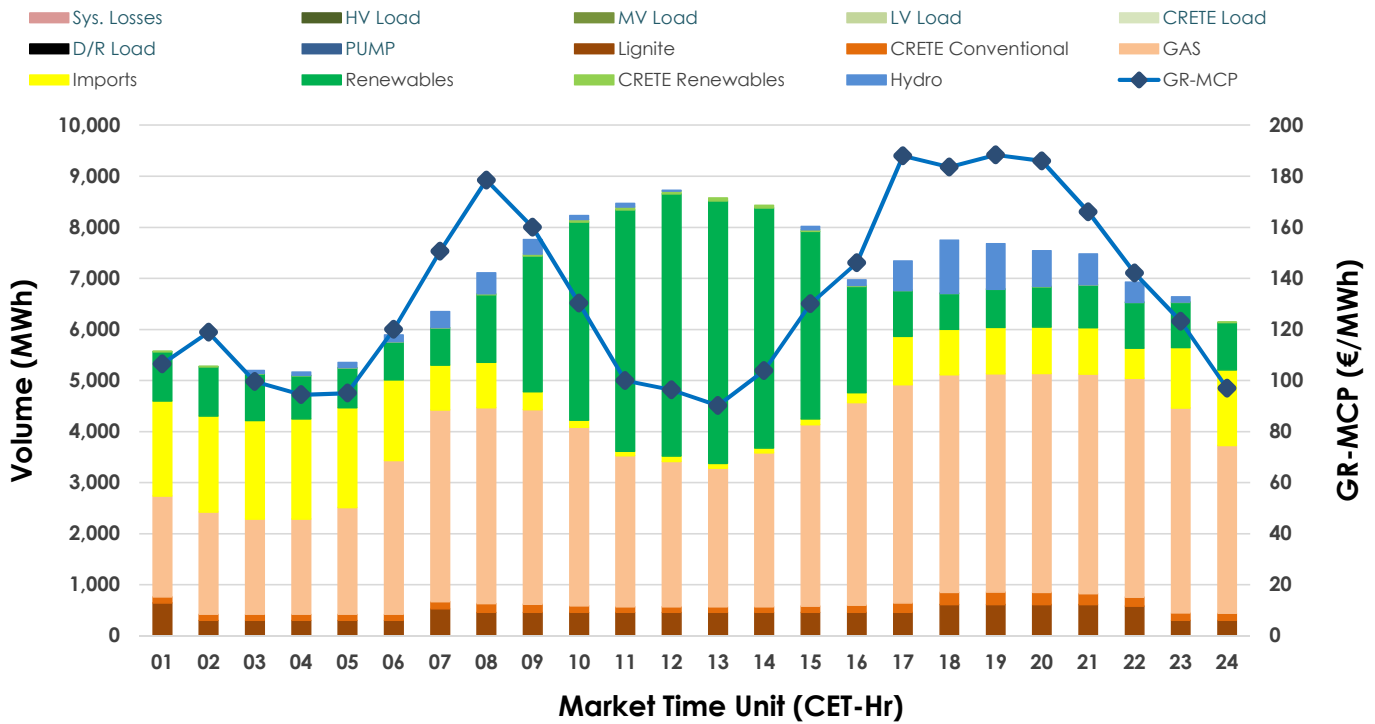
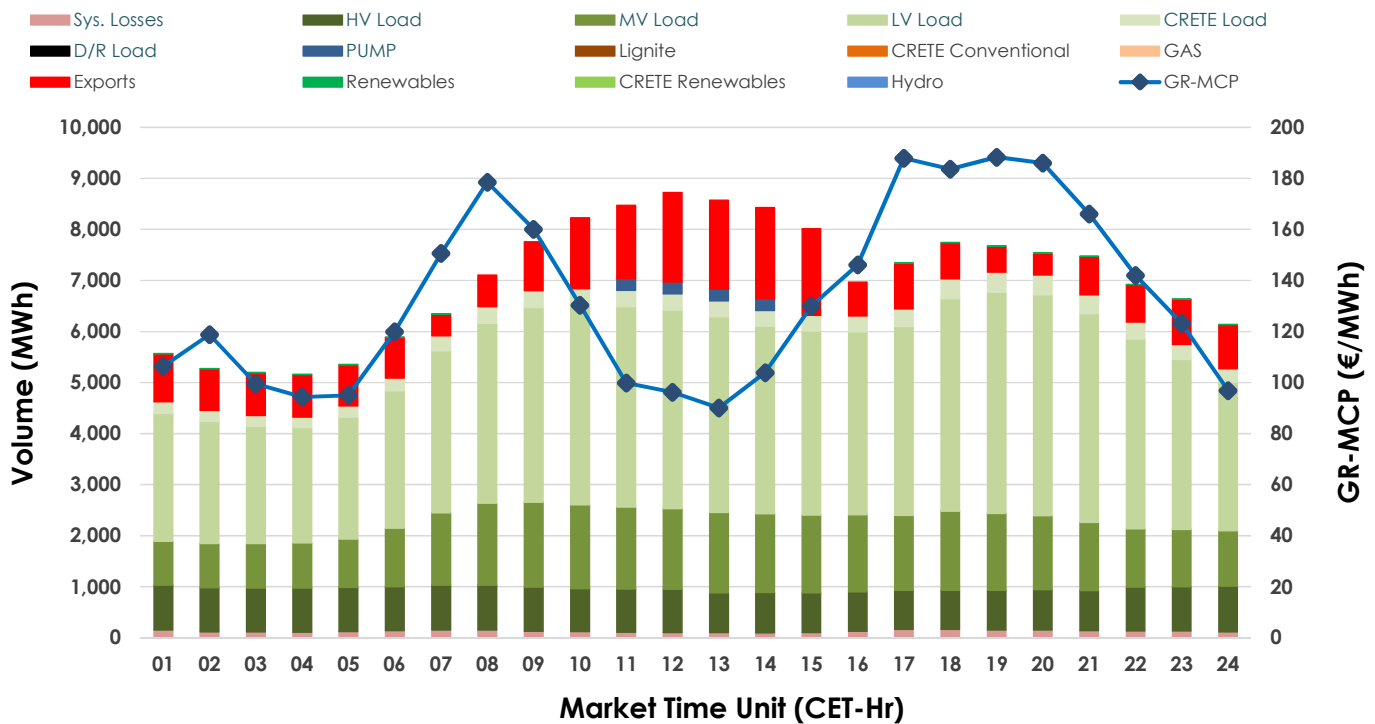


Day-Ahead Market Outlook

27.01.2025 Day-Ahead Market - Sell



27.01.2025 Day-Ahead Market - Buy



GR Bidding Zone Weekly Figures

| Delivery Day | 21.01 | 22.01 | 23.01 | 24.01 | 25.01 | 26.01 | 27.01 |
|-----------------|--------|--------|--------|--------|--------|--------|--------|
| | 📈 5% | 📉 -11% | 📉 -12% | 📉 -2% | 📉 -21% | 📈 1% | 📈 12% |
| Avg.MCP (€/MWh) | 193.12 | 171.66 | 151.67 | 148.54 | 117.17 | 118.56 | 133.08 |
| Max.MCP (€/MWh) | 333.41 | 335.72 | 220.59 | 204.18 | 160.50 | 143.28 | 188.32 |
| Min.MCP (€/MWh) | 125.69 | 116.48 | 95.28 | 103.10 | 67.13 | 94.10 | 90.12 |
| | 📈 1% | 📈 2% | 📉 -4% | 📉 -3% | 📉 -8% | 📉 -8% | 📈 8% |
| Tot.Vol(GWh) | 383.43 | 392.84 | 378.23 | 367.25 | 338.58 | 311.24 | 337.11 |

Trades by Order Type

| Delivery Day | | 21.01 | 22.01 | 23.01 | 24.01 | 25.01 | 26.01 | 27.01 |
|--------------|-----|---|---------|---------|---------|---------|---------|---------|
| Order P.T | | Sell & Buy Trades in (GWh) per Price Type | | | | | | |
| PPT | (S) | 47.547 | 50.143 | 51.564 | 45.481 | 48.854 | 45.428 | 46.201 |
| HBD | (S) | 52.764 | 59.567 | 54.300 | 54.374 | 53.392 | 44.001 | 51.357 |
| BLK | (S) | 82.709 | 80.890 | 76.907 | 77.574 | 55.917 | 52.022 | 57.092 |
| CPL | (S) | 8.694 | 5.821 | 6.342 | 6.194 | 11.126 | 14.171 | 13.905 |
| PPT | (B) | 18.736 | 17.245 | 16.360 | 14.872 | 15.264 | 13.994 | 13.704 |
| HBD | (B) | 154.277 | 157.304 | 154.344 | 150.510 | 137.240 | 128.670 | 142.061 |
| BLK | (B) | | | | | | | |
| CPL | (B) | 18.702 | 21.873 | 18.409 | 18.241 | 16.784 | 12.958 | 12.791 |
| | | Sell & Buy Orders Traded per Price Type | | | | | | |
| PPT | (S) | 406 | 416 | 426 | 441 | 428 | 468 | 447 |
| HBD | (S) | 983 | 935 | 933 | 953 | 850 | 810 | 868 |
| BLK | (S) | 377 | 370 | 351 | 366 | 250 | 260 | 277 |
| PPT | (B) | 730 | 720 | 730 | 652 | 728 | 731 | 650 |
| HBD | (B) | 1299 | 1307 | 1349 | 1349 | 1368 | 1278 | 1299 |
| BLK | (B) | | | | | | | |

| | |
|-----|-------------------------------|
| MCP | Market Clearing Price (€/MWh) |
| PPT | Priority Price-Taking |
| HBD | Hybrid |
| BLK | Block |
| CPL | Market Coupling Flow |

Trade's Volume Mix

| | | Sell - MWh | Buy - MWh | |
|-------------|---------|------------|-----------|---------|
| Lignite | (6.5%) | 10,885 | 0 | (0.0%) |
| Crete Conv. | (2.2%) | 3,634 | 0 | (0.0%) |
| Gas | (47.3%) | 79,769 | 0 | (0.0%) |
| Hydro | (3.5%) | 5,982 | 0 | (0.0%) |
| Imports | (13.0%) | 21,935 | | |
| RES | (27.2%) | 45,924 | 102 | (0.1%) |
| Crete RES | (0.3%) | 425 | 0 | (0.0%) |
| HV Load | (0.0%) | 0 | 19,963 | (11.8%) |
| MV Load | (0.0%) | 0 | 31,895 | (18.9%) |
| LV Load | (0.0%) | 0 | 81,980 | (48.6%) |
| Crete Load | (0.0%) | 0 | 7,268 | (4.3%) |
| Pumping | (0.0%) | 0 | 940 | (0.6%) |
| Exports | | | 23,246 | (13.8%) |
| Sys.Losses | (0.0%) | 0 | 3,162 | (1.9%) |
| D/R Load | (0.0%) | 0 | 0 | (0.0%) |

