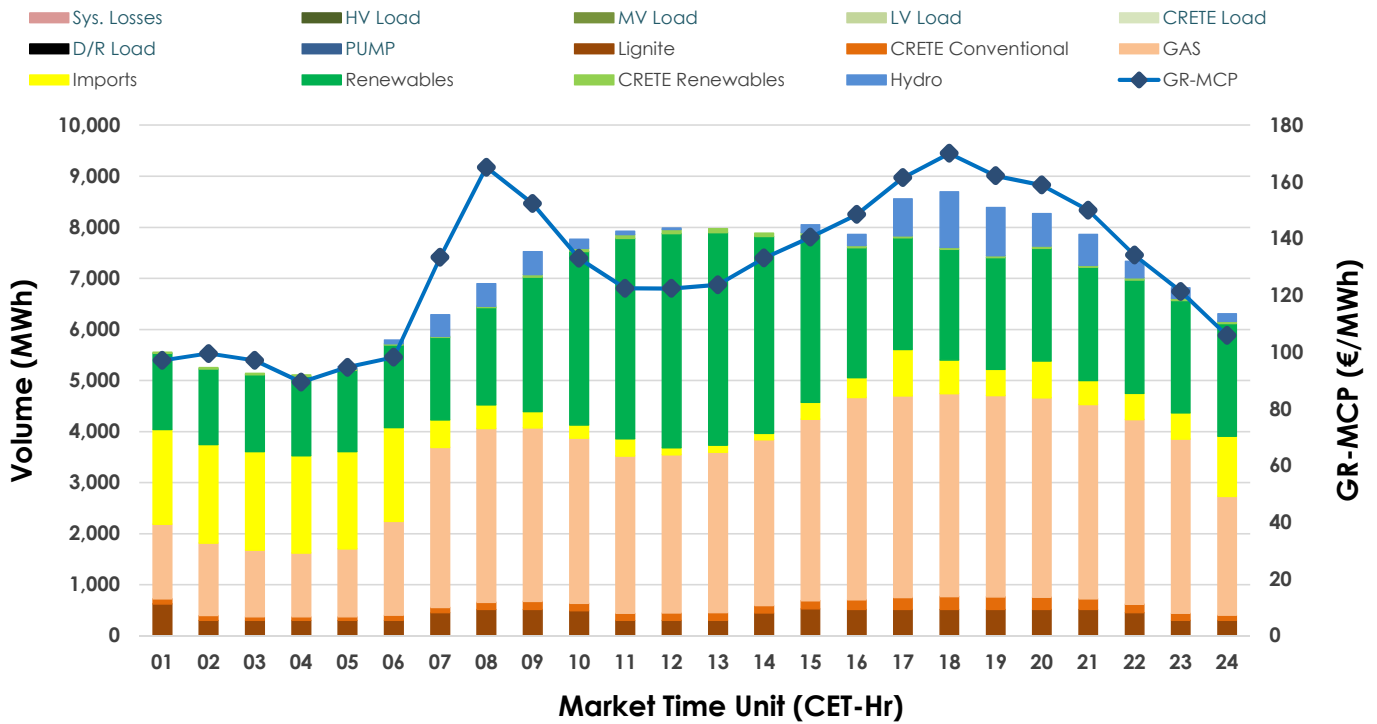
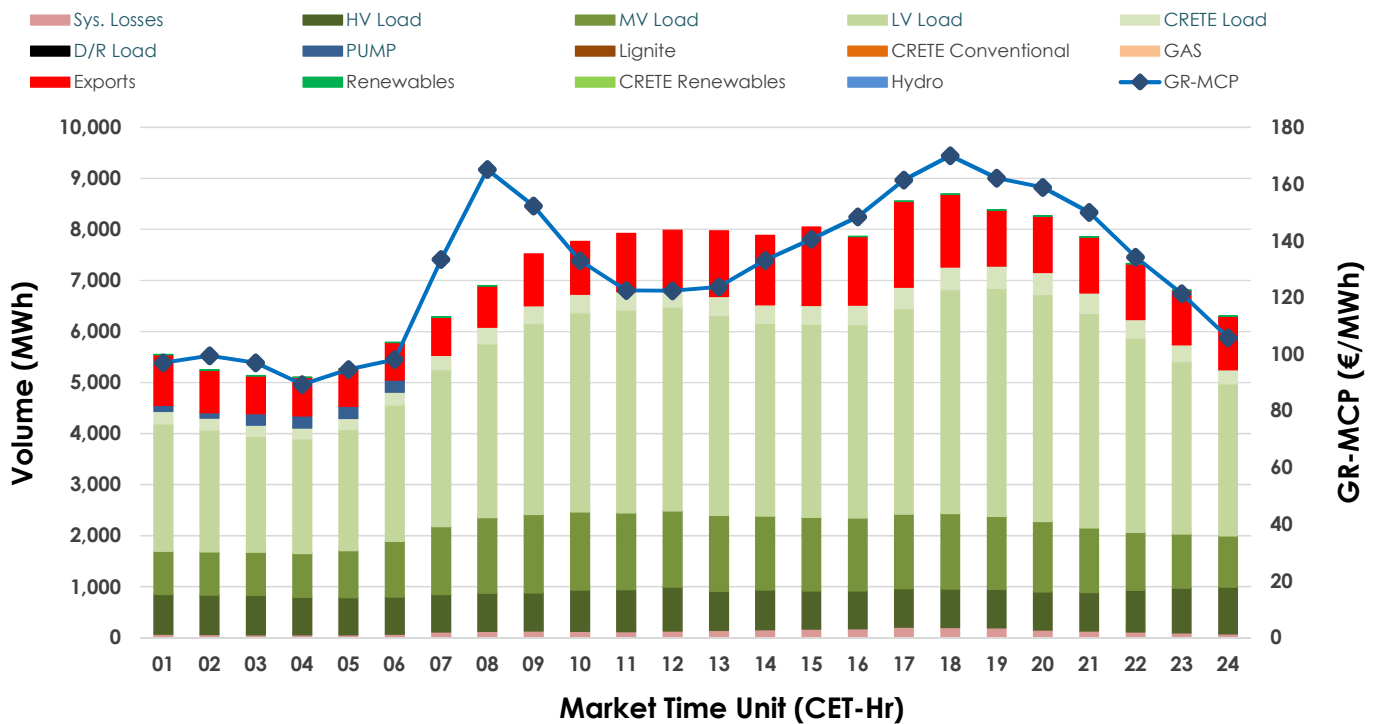


Day-Ahead Market Outlook

07.01.2025 Day-Ahead Market - Sell



07.01.2025 Day-Ahead Market - Buy



GR Bidding Zone Weekly Figures

| Delivery Day | 01.01 | 02.01 | 03.01 | 04.01 | 05.01 | 06.01 | 07.01 |
|-----------------|--------|--------|--------|--------|--------|--------|--------|
| | 📉-29% | 📈25% | ➡️-1% | 📈12% | 📉-10% | 📉-5% | 📈10% |
| Avg.MCP (€/MWh) | 99.32 | 124.56 | 123.53 | 137.92 | 123.58 | 117.85 | 129.75 |
| Max.MCP (€/MWh) | 149.55 | 170.00 | 155.56 | 192.33 | 216.40 | 155.32 | 170.00 |
| Min.MCP (€/MWh) | 28.98 | 95.74 | 97.00 | 104.52 | 92.87 | 74.64 | 89.37 |
| | 📉-12% | 📈8% | 📈3% | 📉-4% | 📉-4% | 📈2% | 📈6% |
| Tot.Vol(GWh) | 304.54 | 330.06 | 340.43 | 326.75 | 314.04 | 320.29 | 340.94 |

Trades by Order Type

| Delivery Day | | 01.01 | 02.01 | 03.01 | 04.01 | 05.01 | 06.01 | 07.01 |
|--------------|-----|---|---------|---------|---------|---------|---------|---------|
| Order P.T | | Sell & Buy Trades in (GWh) per Price Type | | | | | | |
| PPT | (S) | 44.703 | 45.718 | 54.885 | 46.276 | 47.696 | 49.010 | 53.790 |
| HBD | (S) | 47.061 | 53.321 | 61.243 | 55.974 | 49.240 | 52.259 | 59.260 |
| BLK | (S) | 35.481 | 50.555 | 40.741 | 47.967 | 42.226 | 46.185 | 47.047 |
| CPL | (S) | 25.025 | 15.436 | 13.345 | 13.159 | 17.856 | 12.693 | 10.375 |
| PPT | (B) | 15.157 | 14.583 | 14.596 | 14.633 | 13.772 | 14.446 | 14.633 |
| HBD | (B) | 125.767 | 134.292 | 141.567 | 136.060 | 132.537 | 129.911 | 141.425 |
| BLK | (B) | | | | | | | |
| CPL | (B) | 11.347 | 16.156 | 14.051 | 12.684 | 10.710 | 15.789 | 14.414 |
| | | Sell & Buy Orders Traded per Price Type | | | | | | |
| PPT | (S) | 511 | 441 | 444 | 499 | 531 | 458 | 431 |
| HBD | (S) | 850 | 845 | 843 | 910 | 886 | 873 | 914 |
| BLK | (S) | 169 | 250 | 194 | 225 | 197 | 232 | 228 |
| PPT | (B) | 674 | 670 | 687 | 654 | 670 | 684 | 658 |
| HBD | (B) | 1359 | 1372 | 1358 | 1310 | 1328 | 1244 | 1298 |
| BLK | (B) | | | | | | | |

| | |
|-----|-------------------------------|
| MCP | Market Clearing Price (€/MWh) |
| PPT | Priority Price-Taking |
| HBD | Hybrid |
| BLK | Block |
| CPL | Market Coupling Flow |

Trade's Volume Mix

| | | Sell - MWh | Buy - MWh | |
|-------------|---------|------------|-----------|---------|
| Lignite | (5.9%) | 10,133 | 0 | (0.0%) |
| Crete Conv. | (2.1%) | 3,584 | 0 | (0.0%) |
| Gas | (41.5%) | 70,824 | 0 | (0.0%) |
| Hydro | (3.9%) | 6,699 | 0 | (0.0%) |
| Imports | (11.7%) | 19,891 | | |
| RES | (34.2%) | 58,326 | 109 | (0.1%) |
| Crete RES | (0.6%) | 1,015 | 0 | (0.0%) |
| HV Load | (0.0%) | 0 | 18,619 | (10.9%) |
| MV Load | (0.0%) | 0 | 30,273 | (17.8%) |
| LV Load | (0.0%) | 0 | 83,443 | (48.9%) |
| Crete Load | (0.0%) | 0 | 8,018 | (4.7%) |
| Pumping | (0.0%) | 0 | 1,163 | (0.7%) |
| Exports | | | 25,795 | (15.1%) |
| Sys.Losses | (0.0%) | 0 | 3,052 | (1.8%) |
| D/R Load | (0.0%) | 0 | 0 | (0.0%) |

