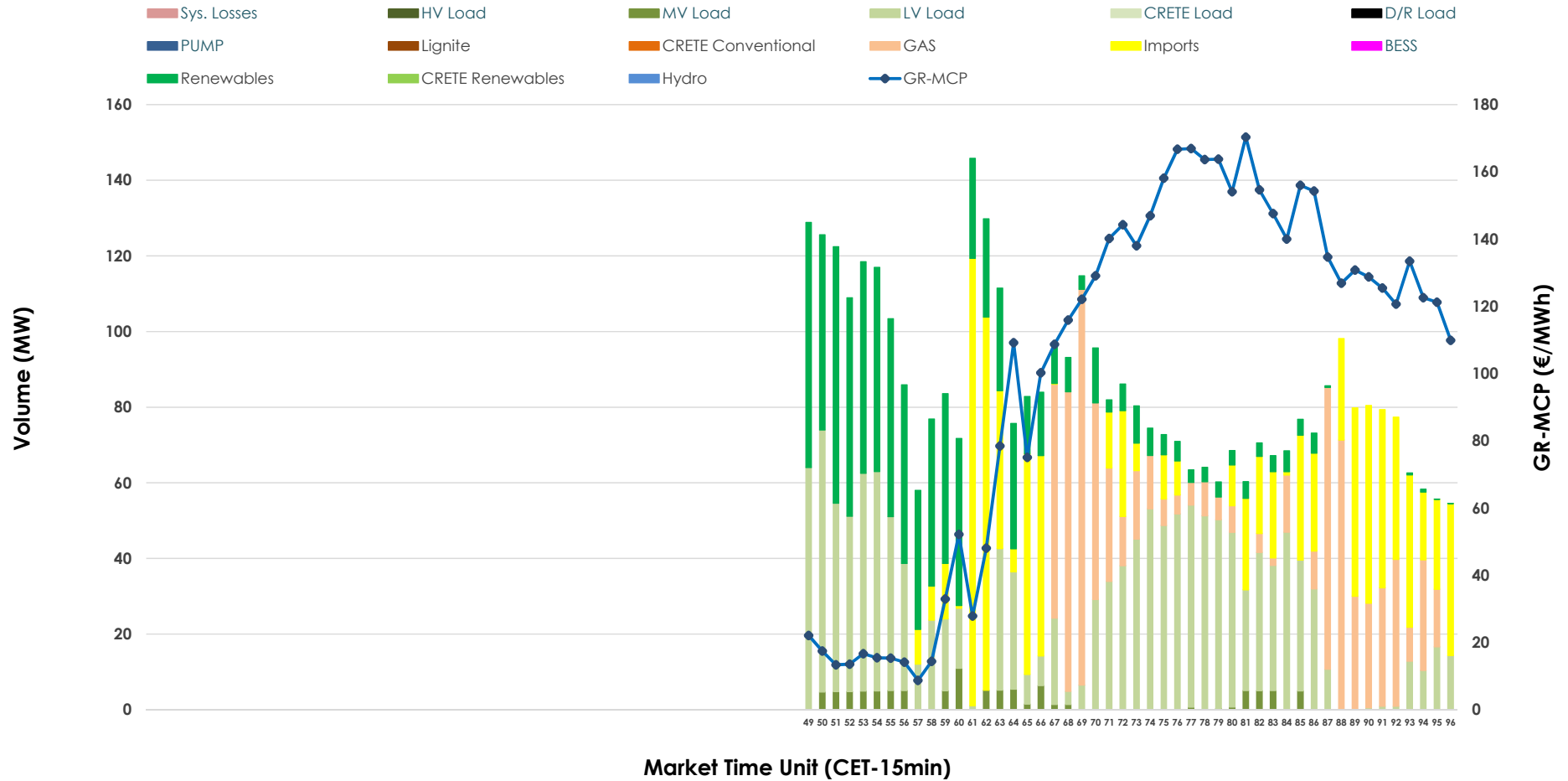


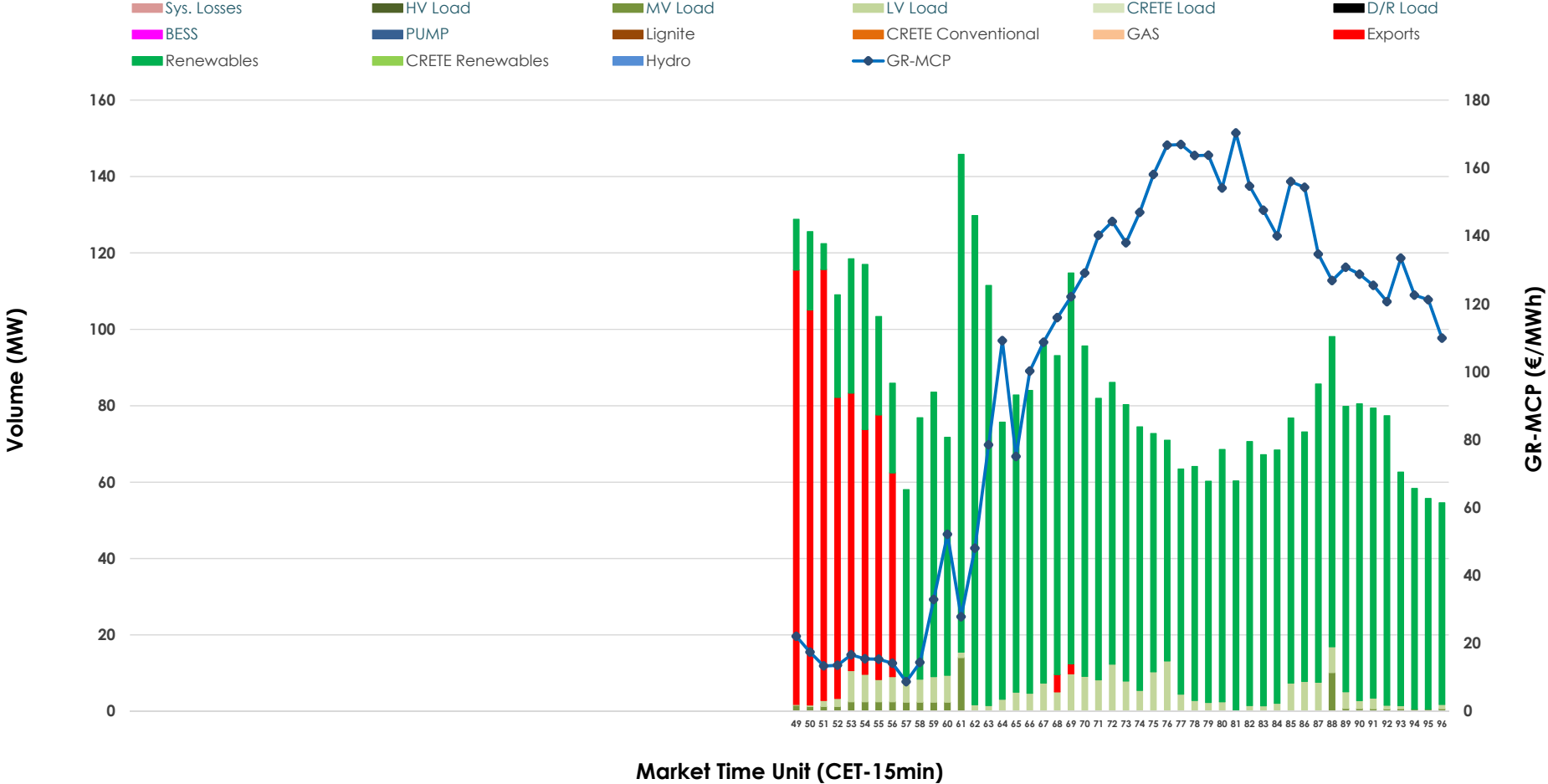


IDA '3' Market Outlook

28.03.2026 IDA '3' Market - Sell



28.03.2026 IDA '3' Market - Buy



GR Bidding Zone Weekly Figures

Delivery Day	22.03	23.03	24.03	25.03	26.03	27.03	28.03
	👉 -14%	👈 79%	👉 -29%	👉 -16%	👉 -22%	👈 33%	👉 -5%
Avg.MCP (€/MWh)	95.13	170.66	121.58	102.12	79.75	106.28	101.47
Max.MCP (€/MWh)	188.64	292.57	203.53	205.42	161.54	137.74	170.33
Min.MCP (€/MWh)	-9.13	88.57	15.87	-7.26	-43.75	23.02	8.73
	👇 -64%	👉 20%	👉 0%	👇 -36%	👈 110%	👉 24%	👉 -29%
Tot.Vol(GWh)	1.43	1.71	1.71	1.10	2.31	2.88	2.05

Trades by Order Type

Delivery Day		22.03	23.03	24.03	25.03	26.03	27.03	28.03	
Ord Price Type		Sell & Buy Trades in (GWh) per Price Type							(%)
PPT	(S)	0.000	0.000	0.000	0.000	0.000	0.000	0.000	0.00%
HBD	(S)	0.638	0.817	0.430	0.414	0.535	0.901	0.787	76.72%
BLK	(S)	0.000	0.000	0.000	0.000	0.000	0.000	0.000	0.00%
CPL	(S)	0.078	0.039	0.426	0.138	0.622	0.540	0.239	23.28%
PPT	(B)	0.000	0.000	0.000	0.000	0.000	0.000	0.000	0.00%
HBD	(B)	0.524	0.528	0.677	0.353	0.650	0.976	0.857	83.54%
BLK	(B)	0.000	0.000	0.000	0.000	0.000	0.000	0.000	0.00%
CPL	(B)	0.192	0.328	0.178	0.199	0.508	0.465	0.169	16.46%
		Sell & Buy Orders Traded per Price Type							(%)
PPT	(S)	0	0	0	0	0	0	0	0.00%
HBD	(S)	224	168	158	224	156	139	200	100.00%
BLK	(S)	0	0	0	0	0	0	0	0.00%
PPT	(B)	0	0	0	0	0	0	0	0.00%
HBD	(B)	221	216	273	143	142	281	259	100.00%
BLK	(B)	0	0	0	0	0	0	0	0.00%

- MCP** Market Clearing Price (€/MWh)
- PPT** Priority Price-Taking
- HBD** Hybrid
- BLK** Block
- CPL** Market Coupling Flow

Trade's Volume Mix

	Sell - MWh	Buy - MWh	
Lignite (0.0%)	0	0	(0.0%)
Crete Conv. (0.0%)	0	0	(0.0%)
Gas (18.8%)	193	0	(0.0%)
Hydro (0.0%)	0	0	(0.0%)
Imports (23.3%)	239		
RES (21.6%)	221	787	(76.7%)
Crete RES (0.0%)	0	0	(0.0%)
BESS (0.0%)	0	0	(0.0%)
HV Load (0.0%)	0	0	(0.0%)
MV Load (2.4%)	25	14	(1.3%)
LV Load (33.9%)	348	56	(5.5%)
Crete Load (0.0%)	0	0	(0.0%)
Pumping (0.0%)	0	0	(0.0%)
Exports		169	(16.5%)
Sys.Losses (0.0%)	0	0	(0.0%)
D/R Load (0.0%)	0	0	(0.0%)

