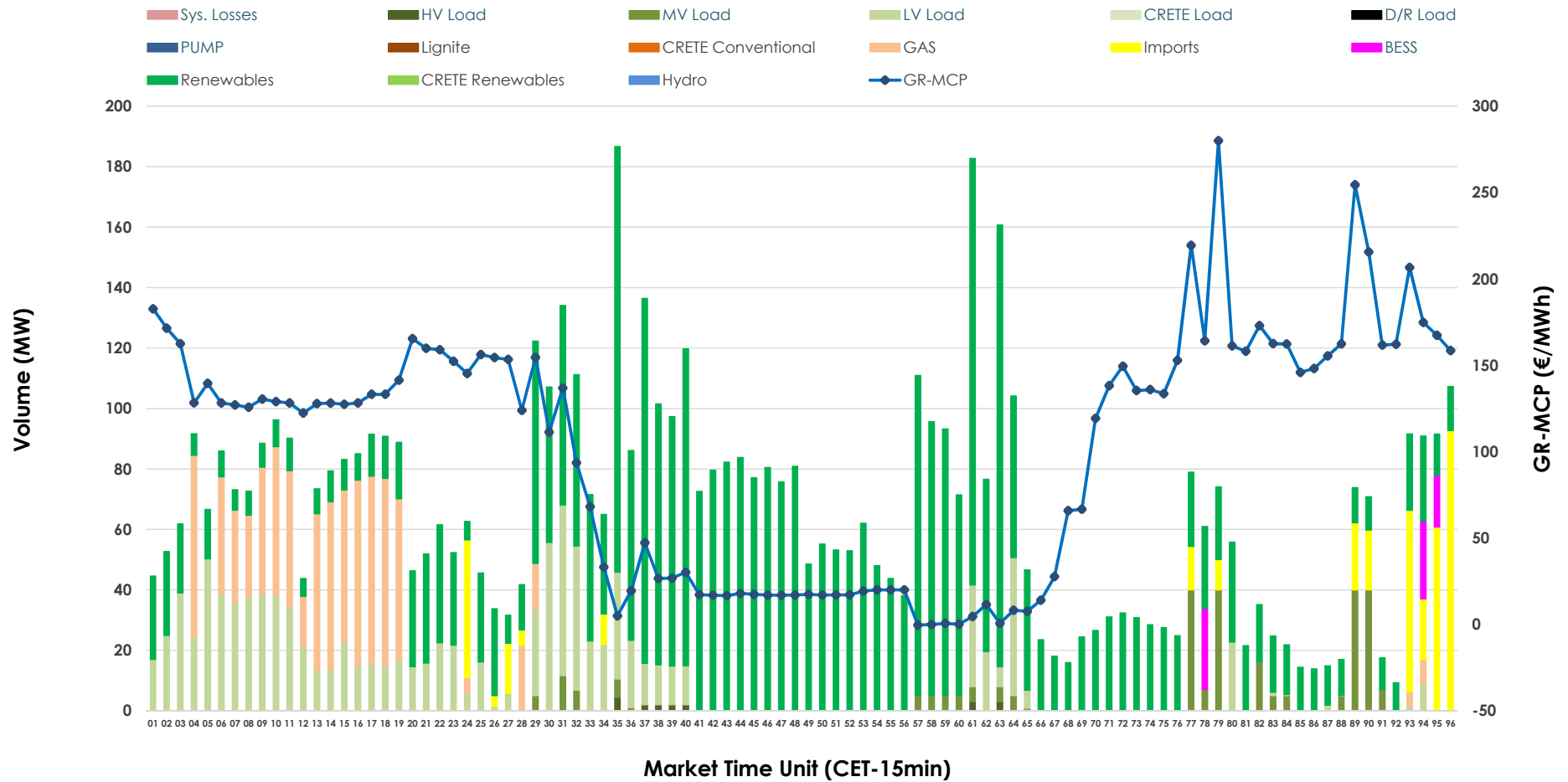


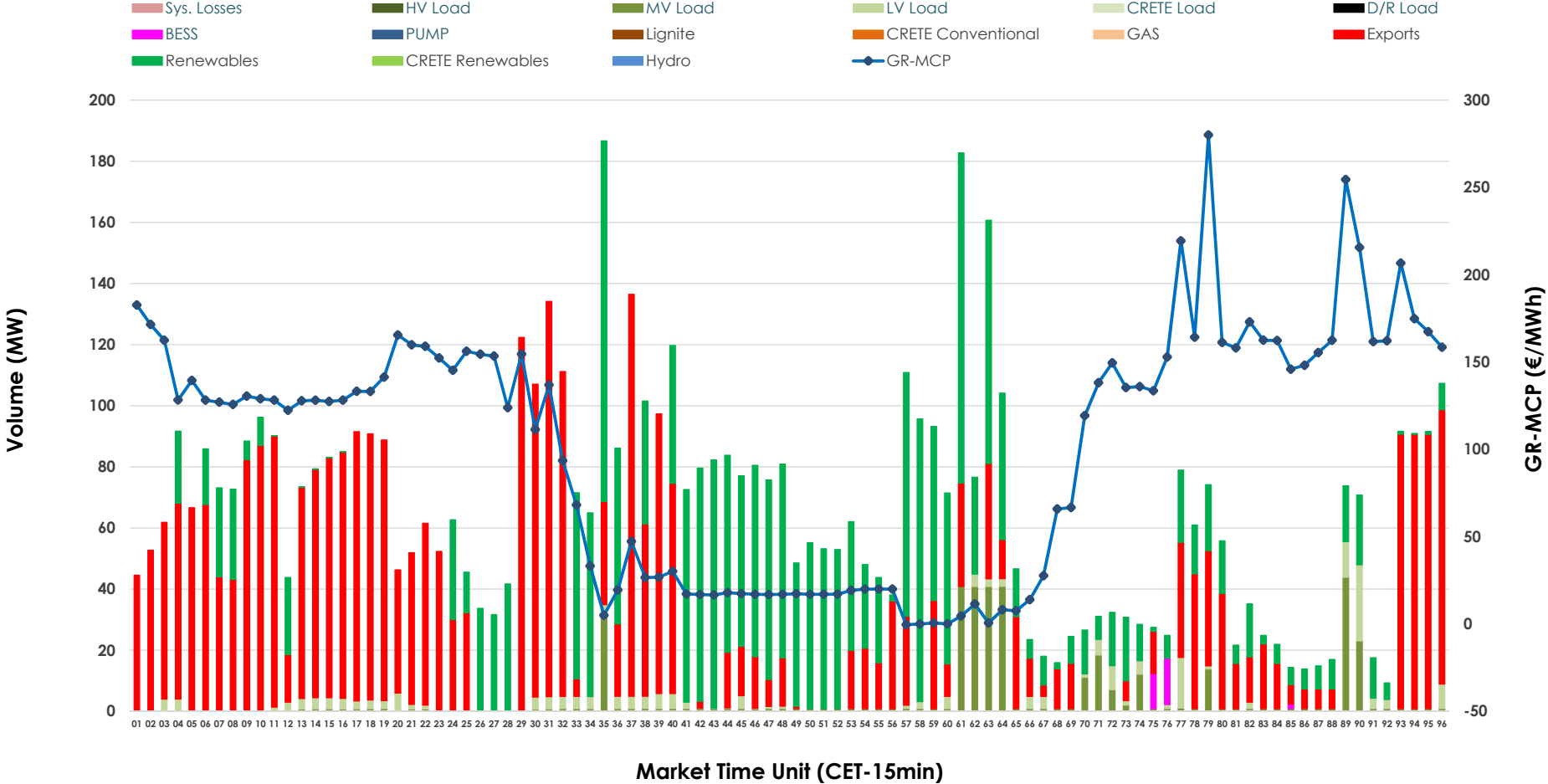


IDA '2' Market Outlook

29.06.2026 IDA '2' Market - Sell



29.06.2026 IDA '2' Market - Buy



GR Bidding Zone Weekly Figures

Delivery Day	23.06	24.06	25.06	26.06	27.06	28.06	29.06
	↑ 49%	↔ 12%	↓ -20%	↓ -27%	↔ 1%	↓ -22%	↑ 50%
Avg.MCP (€/MWh)	133.54	150.06	119.57	86.86	87.62	68.04	101.76
Max.MCP (€/MWh)	300.97	275.57	280.64	187.76	198.96	147.37	280.03
Min.MCP (€/MWh)	-2.00	50.28	28.12	-10.00	-9.13	-11.32	-0.38
	↓ -16%	↑ 47%	↓ -19%	↓ -38%	↑ 87%	↓ -28%	↓ -15%
Tot.Vol(GWh)	3.82	5.62	4.52	2.82	5.28	3.83	3.24

Trades by Order Type

Delivery Day		23.06	24.06	25.06	26.06	27.06	28.06	29.06	
Ord Price Type		Sell & Buy Trades in (GWh) per Price Type							(%)
PPT	(S)	0.000	0.000	0.000	0.000	0.000	0.000	0.000	0.00%
HBD	(S)	1.357	0.849	0.986	1.343	2.496	0.917	1.523	94.11%
BLK	(S)	0.000	0.000	0.000	0.000	0.000	0.000	0.000	0.00%
CPL	(S)	0.552	1.960	1.276	0.067	0.145	0.996	0.095	5.89%
PPT	(B)	0.000	0.000	0.000	0.000	0.000	0.000	0.000	0.00%
HBD	(B)	0.928	2.019	1.330	0.947	1.304	1.685	0.757	46.81%
BLK	(B)	0.000	0.000	0.000	0.000	0.000	0.000	0.000	0.00%
CPL	(B)	0.982	0.790	0.932	0.462	1.337	0.228	0.861	53.19%
		Sell & Buy Orders Traded per Price Type							(%)
PPT	(S)	0	0	0	0	0	0	0	0.00%
HBD	(S)	436	245	321	326	470	249	424	100.00%
BLK	(S)	0	0	0	0	0	0	0	0.00%
PPT	(B)	0	0	0	0	0	0	0	0.00%
HBD	(B)	301	524	377	292	476	447	250	100.00%
BLK	(B)	0	0	0	0	0	0	0	0.00%

- MCP** Market Clearing Price (€/MWh)
- PPT** Priority Price-Taking
- HBD** Hybrid
- BLK** Block
- CPL** Market Coupling Flow

Trade's Volume Mix

	Sell - MWh	Buy - MWh	
Lignite	0	0	(0.0%)
Crete Conv.	0	0	(0.0%)
Gas	190	0	(0.0%)
Hydro	0	0	(0.0%)
Imports	95		
RES	966	601	(37.1%)
Crete RES	0	0	(0.0%)
BESS	17	7	(0.4%)
HV Load	5	0	(0.0%)
MV Load	68	96	(5.9%)
LV Load	277	53	(3.3%)
Crete Load	0	0	(0.0%)
Pumping	0	0	(0.0%)
Exports		861	(53.2%)
Sys.Losses	0	0	(0.0%)
D/R Load	0	0	(0.0%)

