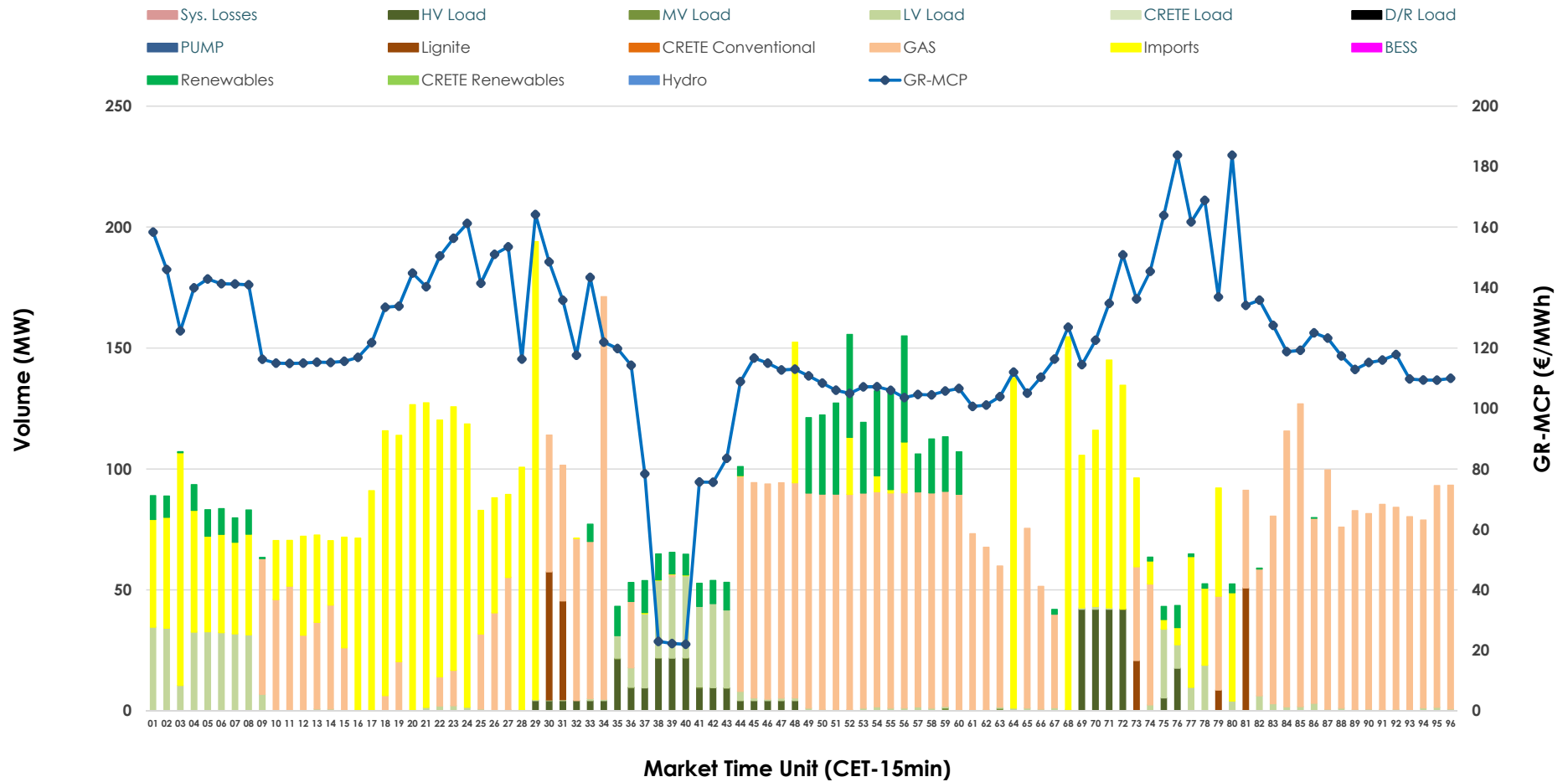


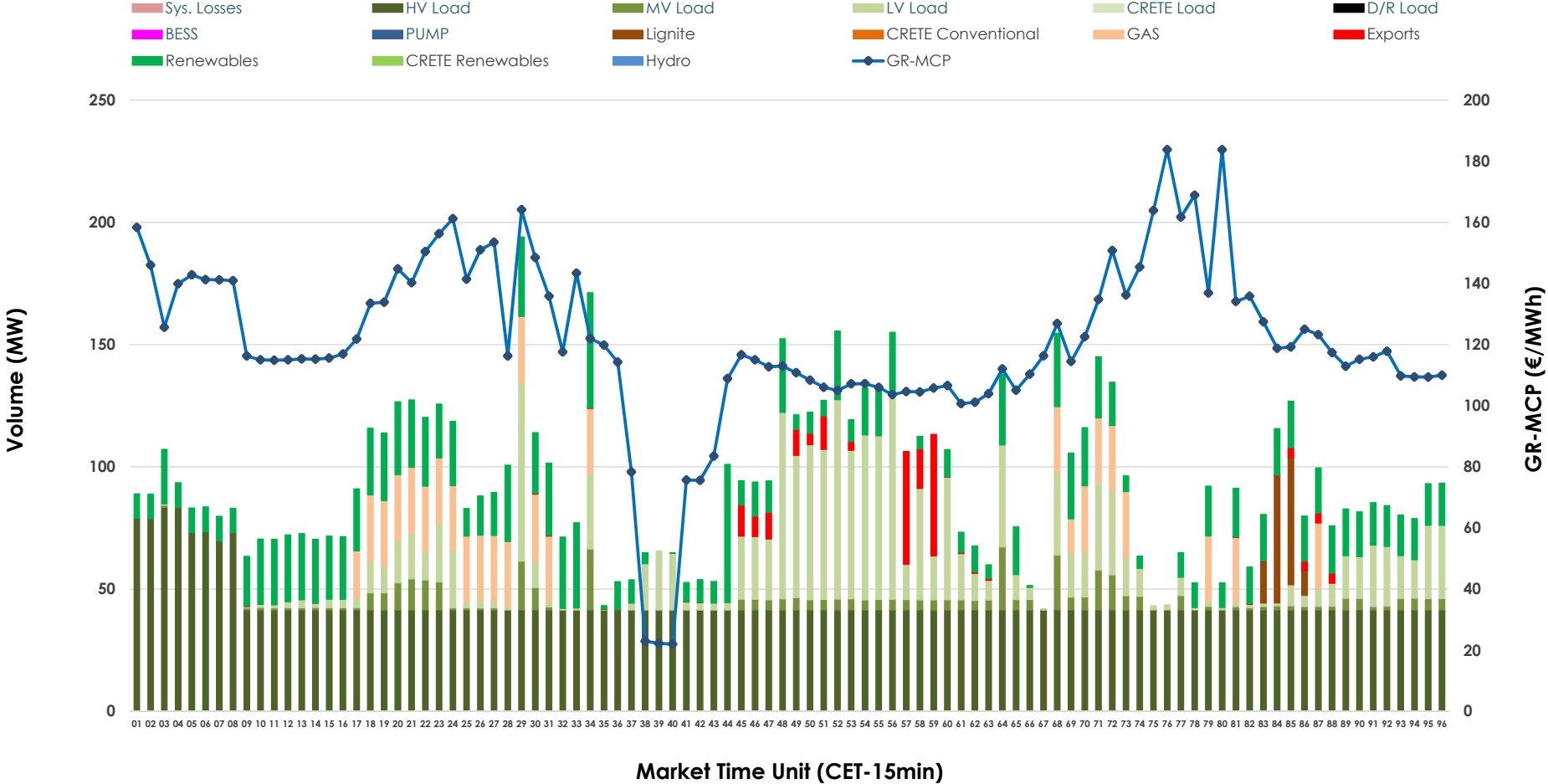


IDA '1' Market Outlook

07.05.2026 IDA '1' Market - Sell



07.05.2026 IDA '1' Market - Buy



GR Bidding Zone Weekly Figures

Delivery Day	01.05	02.05	03.05	04.05	05.05	06.05	07.05
	↓ -37%	↔ 9%	↔ 16%	↑ 49%	→ -1%	↔ 2%	↔ 20%
Avg.MCP (€/MWh)	52.40	57.37	66.66	99.64	98.84	101.05	121.19
Max.MCP (€/MWh)	114.42	173.60	178.11	263.41	253.79	205.48	183.77
Min.MCP (€/MWh)	-19.99	-16.90	-11.25	-10.89	-12.30	-9.97	21.99
	↔ 27%	↓ -49%	↑ 61%	↔ -15%	↔ 11%	↔ -17%	↑ 59%
Tot.Vol(GWh)	4.28	2.20	3.55	3.03	3.38	2.80	4.46

Trades by Order Type

Delivery Day		01.05	02.05	03.05	04.05	05.05	06.05	07.05	
Ord Price Type		Sell & Buy Trades in (GWh) per Price Type							(%)
PPT	(S)	0.000	0.000	0.000	0.000	0.000	0.000	0.000	0.00%
HBD	(S)	0.790	0.925	1.500	1.385	1.457	0.962	1.499	67.18%
BLK	(S)	0.000	0.000	0.000	0.000	0.000	0.000	0.000	0.00%
CPL	(S)	1.351	0.176	0.275	0.132	0.231	0.439	0.732	32.82%
PPT	(B)	0.000	0.000	0.000	0.000	0.000	0.000	0.000	0.00%
HBD	(B)	2.090	1.016	1.624	1.216	1.327	1.329	2.182	97.79%
BLK	(B)	0.000	0.000	0.000	0.000	0.000	0.000	0.000	0.00%
CPL	(B)	0.051	0.084	0.151	0.301	0.361	0.072	0.049	2.21%
		Sell & Buy Orders Traded per Price Type							(%)
PPT	(S)	0	0	0	0	0	0	0	0.00%
HBD	(S)	385	389	340	415	362	155	234	100.00%
BLK	(S)	0	0	0	0	0	0	0	0.00%
PPT	(B)	0	0	0	0	0	0	0	0.00%
HBD	(B)	691	1017	793	644	763	823	592	100.00%
BLK	(B)	0	0	0	0	0	0	0	0.00%

- MCP** Market Clearing Price (€/MWh)
- PPT** Priority Price-Taking
- HBD** Hybrid
- BLK** Block
- CPL** Market Coupling Flow

Trade's Volume Mix

	Sell - MWh	Buy - MWh	
Lignite (1.9%)	43	33	(1.5%)
Crete Conv. (0.0%)	0	0	(0.0%)
Gas (47.5%)	1,061	164	(7.3%)
Hydro (0.0%)	0	0	(0.0%)
Imports (32.8%)	732		
RES (6.4%)	142	411	(18.4%)
Crete RES (0.0%)	0	0	(0.0%)
BESS (0.0%)	0	0	(0.0%)
HV Load (4.2%)	93	1,067	(47.8%)
MV Load (0.1%)	1	93	(4.2%)
LV Load (7.1%)	158	415	(18.6%)
Crete Load (0.0%)	0	0	(0.0%)
Pumping (0.0%)	0	0	(0.0%)
Exports		49	(2.2%)
Sys.Losses (0.0%)	0	0	(0.0%)
D/R Load (0.0%)	0	0	(0.0%)

