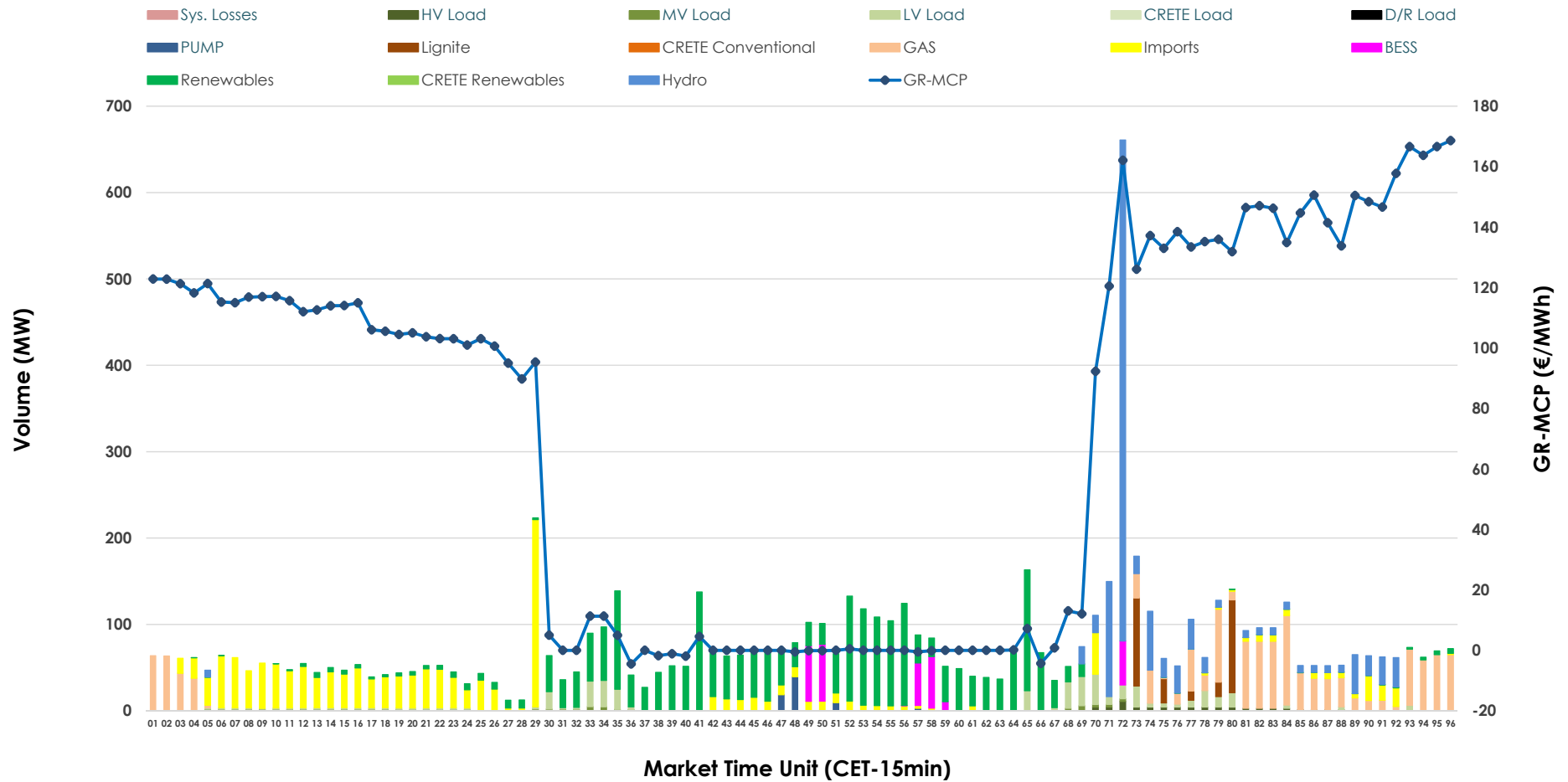


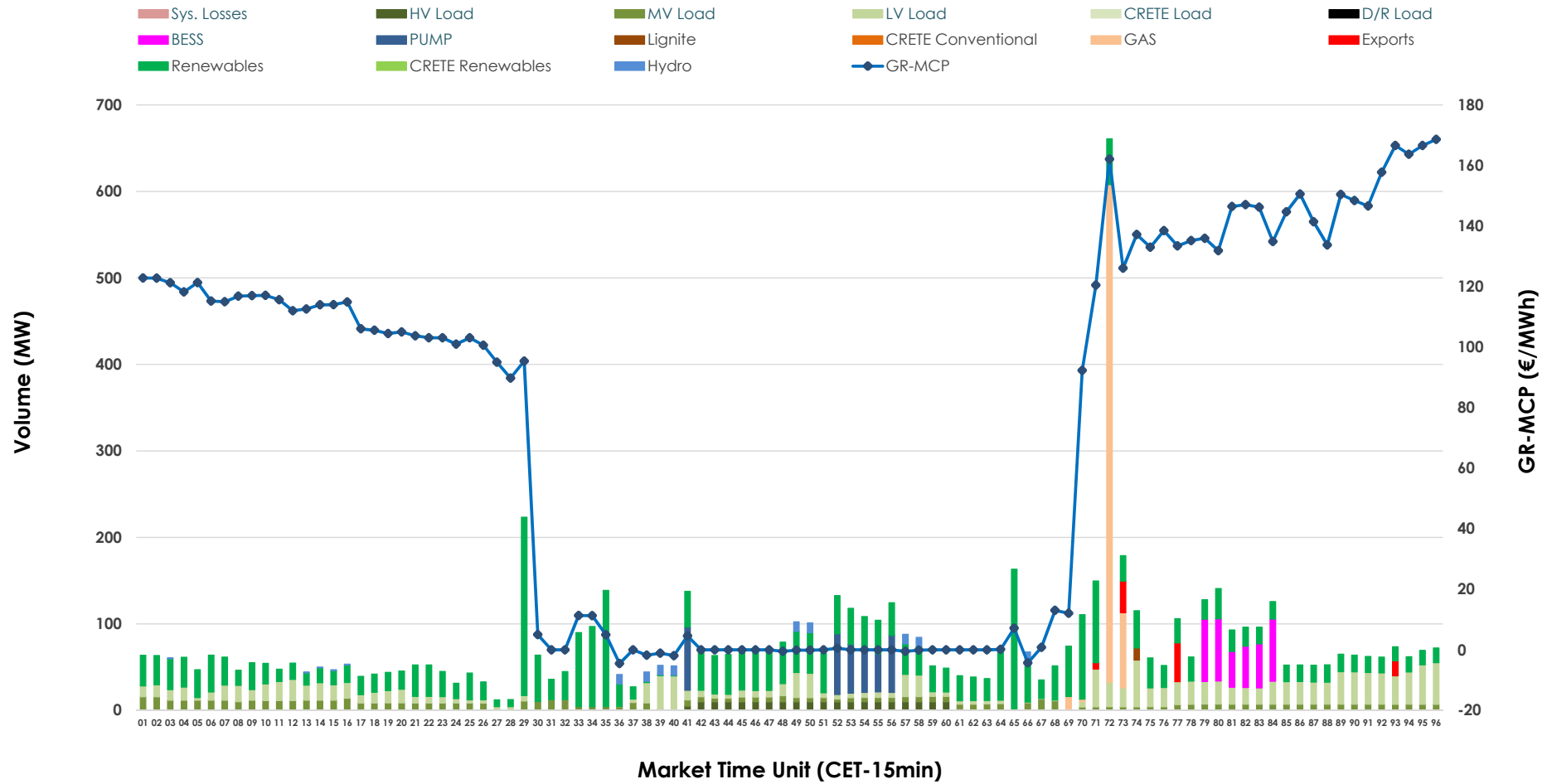


IDA '1' Market Outlook

17.05.2026 IDA '1' Market - Sell



17.05.2026 IDA '1' Market - Buy



GR Bidding Zone Weekly Figures

Delivery Day	11.05	12.05	13.05	14.05	15.05	16.05	17.05
	↗ 6%	↘ -16%	↗ 16%	↘ -2%	→ 0%	↘ -14%	↘ -5%
Avg.MCP (€/MWh)	96.19	80.50	93.55	91.29	91.30	78.20	73.99
Max.MCP (€/MWh)	194.26	202.70	186.71	234.22	178.58	130.66	168.63
Min.MCP (€/MWh)	-8.55	-0.21	-11.78	-11.50	-4.99	-4.75	-4.52
	↘ -1%	↗ 9%	↘ -5%	↘ -25%	↘ -14%	↗ 69%	↘ -9%
Tot.Vol(GWh)	3.64	3.97	3.76	2.83	2.44	4.12	3.74

Trades by Order Type

Delivery Day		11.05	12.05	13.05	14.05	15.05	16.05	17.05	
Ord Price Type		Sell & Buy Trades in (GWh) per Price Type							(%)
PPT	(S)	0.000	0.000	0.000	0.000	0.000	0.000	0.000	0.00%
HBD	(S)	1.641	1.889	1.826	1.325	1.004	1.800	1.492	79.73%
BLK	(S)	0.000	0.000	0.000	0.000	0.000	0.000	0.000	0.00%
CPL	(S)	0.178	0.096	0.053	0.091	0.217	0.262	0.379	20.27%
PPT	(B)	0.000	0.000	0.000	0.000	0.000	0.000	0.000	0.00%
HBD	(B)	1.655	1.804	1.642	1.306	1.081	1.025	1.845	98.58%
BLK	(B)	0.000	0.000	0.000	0.000	0.000	0.000	0.000	0.00%
CPL	(B)	0.164	0.180	0.237	0.110	0.140	1.037	0.027	1.42%
		Sell & Buy Orders Traded per Price Type							(%)
PPT	(S)	0	0	0	0	0	0	0	0.00%
HBD	(S)	372	271	447	201	260	224	227	100.00%
BLK	(S)	0	0	0	0	0	0	0	0.00%
PPT	(B)	0	0	0	0	0	0	0	0.00%
HBD	(B)	738	677	653	649	818	663	679	100.00%
BLK	(B)	0	0	0	0	0	0	0	0.00%

- MCP** Market Clearing Price (€/MWh)
- PPT** Priority Price-Taking
- HBD** Hybrid
- BLK** Block
- CPL** Market Coupling Flow

Trade's Volume Mix

	Sell - MWh	Buy - MWh	
Lignite (3.5%)	66	4	(0.2%)
Crete Conv. (0.0%)	0	0	(0.0%)
Gas (16.5%)	309	170	(9.1%)
Hydro (15.5%)	290	26	(1.4%)
Imports (20.3%)	379		
RES (31.9%)	597	866	(46.3%)
Crete RES (0.0%)	0	0	(0.0%)
BESS (4.0%)	75	89	(4.8%)
HV Load (0.9%)	18	49	(2.6%)
MV Load (1.0%)	19	177	(9.4%)
LV Load (5.4%)	101	376	(20.1%)
Crete Load (0.0%)	0	0	(0.0%)
Pumping (0.9%)	18	89	(4.8%)
Exports		27	(1.4%)
Sys.Losses (0.0%)	0	0	(0.0%)
D/R Load (0.0%)	0	0	(0.0%)

