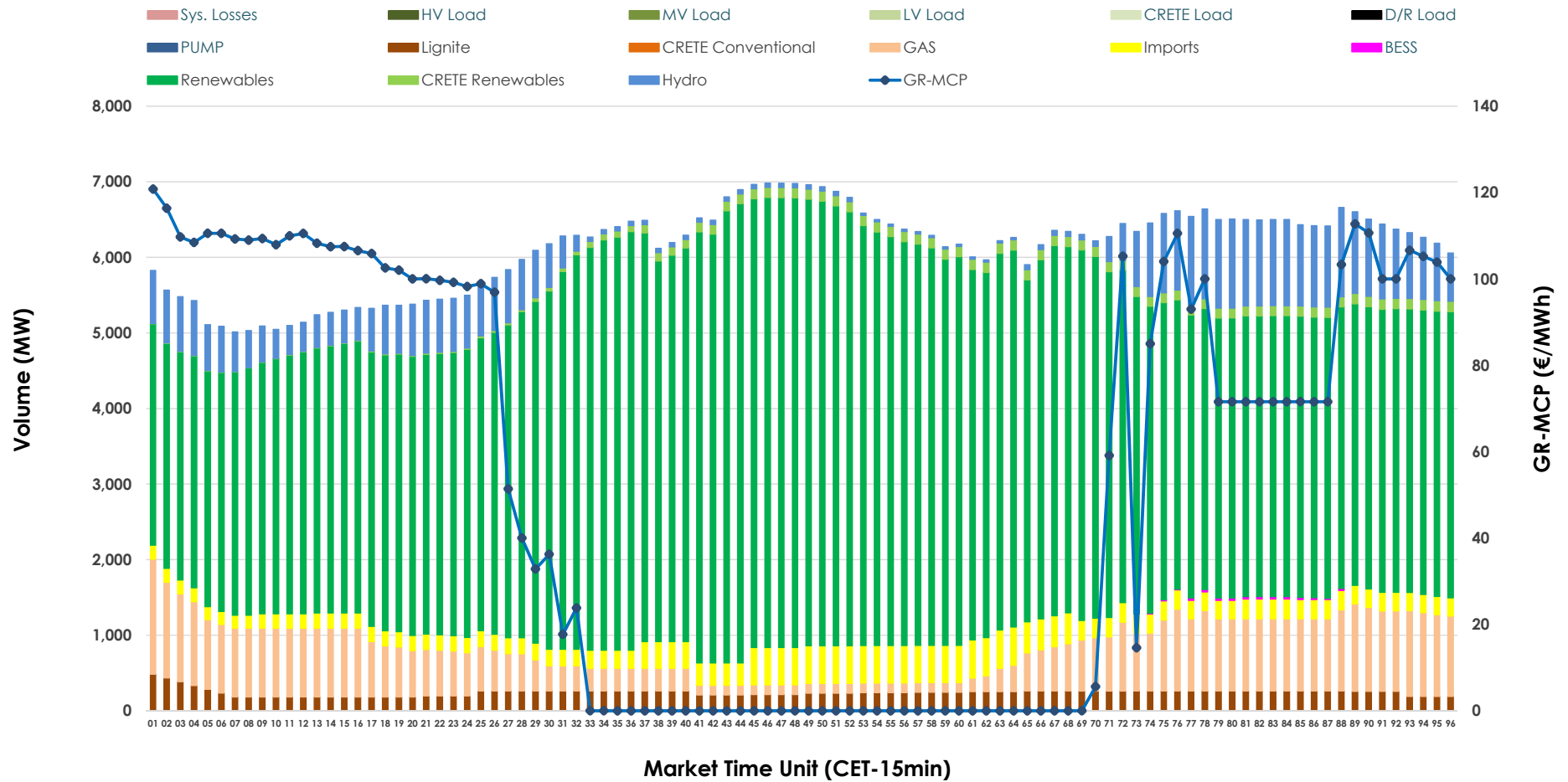


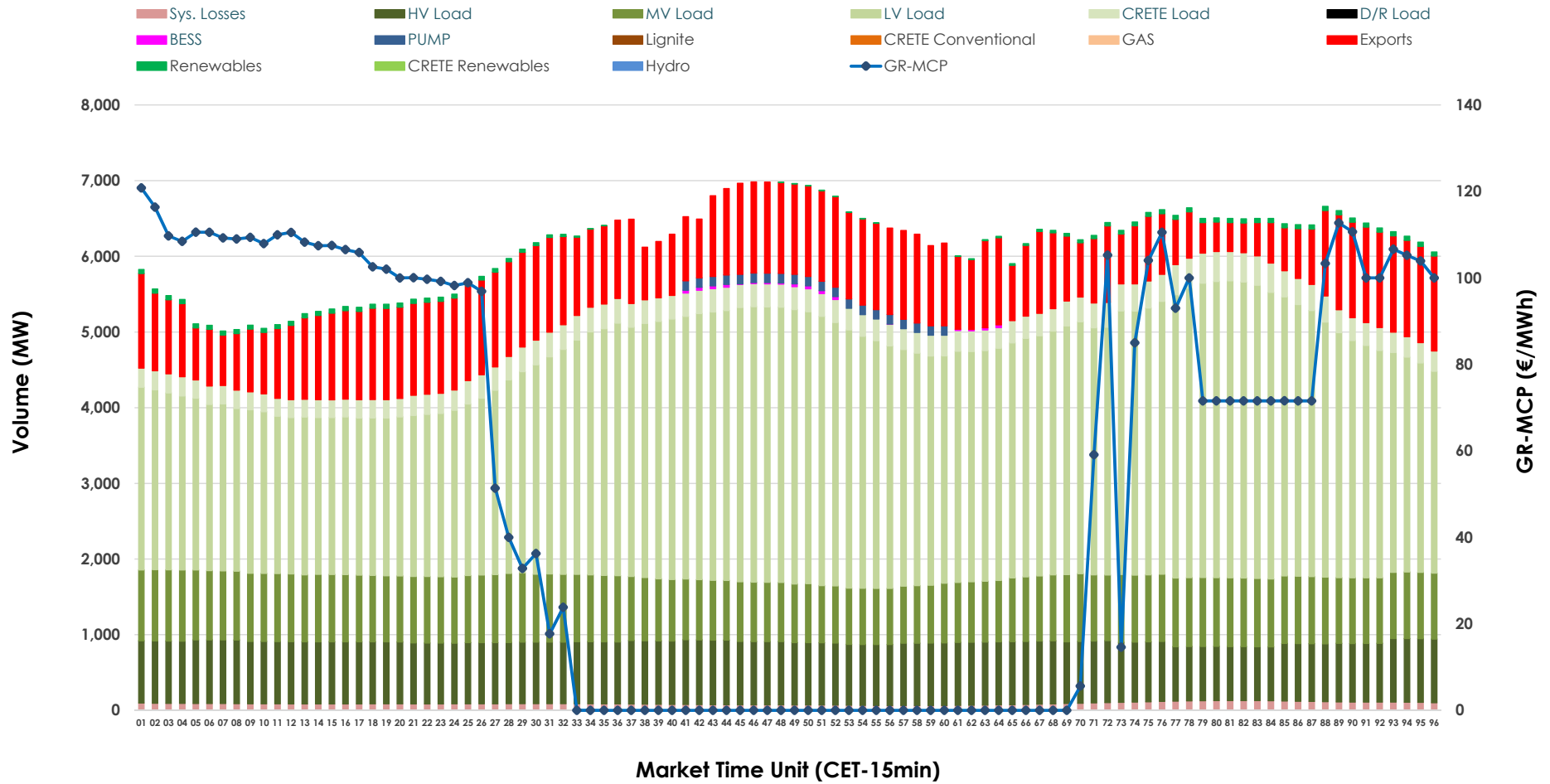


Day-Ahead Market Outlook

01.05.2026 Day-Ahead Market - Sell



01.05.2026 Day-Ahead Market - Buy



GR Bidding Zone Weekly Figures

Delivery Day	25.04	26.04	27.04	28.04	29.04	30.04	01.05
	👇 -27%	👇 -12%	👆 64%	👇 -5%	👆 28%	👇 -11%	👇 -37%
Avg.MCP (€/MWh)	55.72	48.85	80.06	75.66	97.01	86.43	54.50
Max.MCP (€/MWh)	186.45	137.70	221.32	195.51	223.89	213.40	120.80
Min.MCP (€/MWh)	-50.00	-50.00	-2.01	-2.50	-0.01	0.01	0.00
	👇 -10%	👇 -10%	👆 20%	👆 2%	➡ 0%	👇 -2%	👆 5%
Tot.Vol(GWh)	259.84	232.86	278.90	285.73	285.20	280.87	294.18

Trades by Order Type

Delivery Day		25.04	26.04	27.04	28.04	29.04	30.04	01.05	
Ord Price Type		Sell & Buy Trades in (GWh) per Price Type							(%)
PPT	(S)	61.249	48.107	58.220	56.503	50.135	49.397	70.948	48.23%
HBD	(S)	41.071	34.796	58.208	56.663	60.517	60.205	66.512	45.22%
BLK	(S)	16.577	15.757	22.261	29.032	31.075	23.319	9.630	6.55%
CPL	(S)	11.024	17.768	0.761	0.665	0.873	7.514	0.000	0.00%
PPT	(B)	12.979	12.240	13.139	12.556	12.132	12.191	13.282	9.03%
HBD	(B)	113.788	102.435	115.820	118.971	121.569	121.751	114.864	78.09%
BLK	(B)	0.000	0.000	0.000	0.000	0.000	0.000	0.000	0.00%
CPL	(B)	3.154	1.752	10.491	11.337	8.899	6.492	18.943	12.88%
		Sell & Buy Orders Traded per Price Type							(%)
PPT	(S)	1549	1592	1641	1657	1691	1674	1559	35.09%
HBD	(S)	2261	2302	2690	2787	3191	3352	2875	64.71%
BLK	(S)	8	6	11	13	15	9	9	0.20%
PPT	(B)	2245	2258	2307	2293	2311	2265	2294	35.37%
HBD	(B)	4272	3997	3817	4129	4038	4187	4191	64.63%
BLK	(B)	0	0	0	0	0	0	0	0.00%

- MCP** Market Clearing Price (€/MWh)
- PPT** Priority Price-Taking
- HBD** Hybrid
- BLK** Block
- CPL** Market Coupling Flow

Trade's Volume Mix

		Sell - MWh	Buy - MWh	
Lignite	(4.0%)	5,843	0	(0.0%)
Crete Conv.	(0.0%)	0	0	(0.0%)
Gas	(10.2%)	14,957	0	(0.0%)
Hydro	(7.8%)	11,429	0	(0.0%)
Imports	(4.9%)	7,139		
RES	(71.7%)	105,444	814	(0.6%)
Crete RES	(1.5%)	2,181	0	(0.0%)
BESS	(0.1%)	97	115	(0.1%)
HV Load	(0.0%)	0	19,440	(13.2%)
MV Load	(0.0%)	0	20,642	(14.0%)
LV Load	(0.0%)	0	72,080	(49.0%)
Crete Load	(0.0%)	0	7,177	(4.9%)
Pumping	(0.0%)	0	625	(0.4%)
Exports			24,021	(16.3%)
Sys.Losses	(0.0%)	0	2,176	(1.5%)
D/R Load	(0.0%)	0	0	(0.0%)

