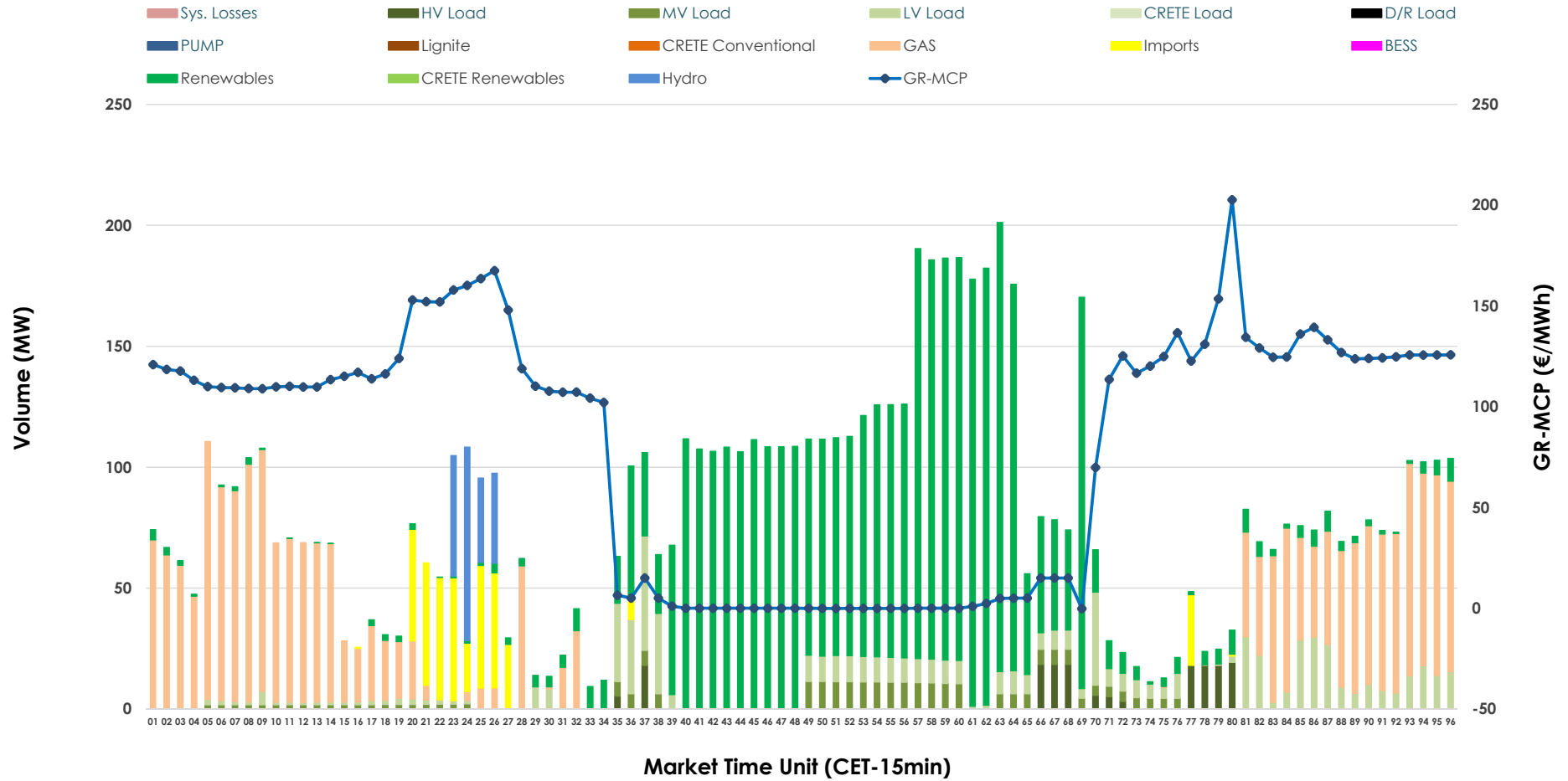


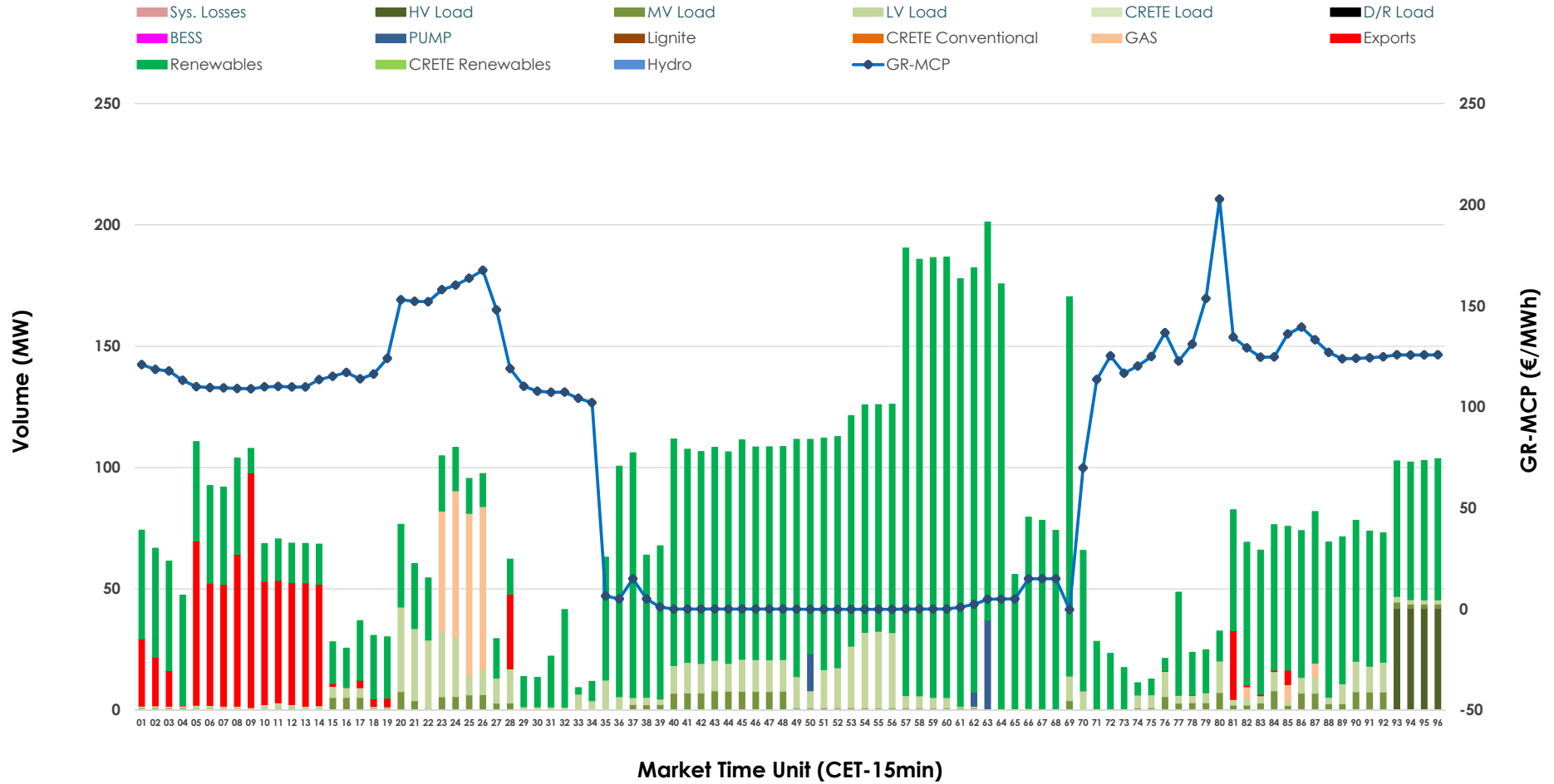


IDA '1' Market Outlook

12.05.2026 IDA '1' Market - Sell



12.05.2026 IDA '1' Market - Buy



GR Bidding Zone Weekly Figures

Delivery Day	06.05	07.05	08.05	09.05	10.05	11.05	12.05
	↗ 2%	↗ 20%	↗ 1%	↘ -11%	↘ -17%	↗ 6%	↘ -16%
Avg.MCP (€/MWh)	101.05	121.19	122.42	108.76	90.58	96.19	80.50
Max.MCP (€/MWh)	205.48	183.77	172.30	227.06	202.09	194.26	202.70
Min.MCP (€/MWh)	-9.97	21.99	61.50	-7.61	-7.78	-8.55	-0.21
	↘ -17%	↗ 59%	↘ -3%	→ 0%	↘ -15%	↘ -1%	↗ 9%
Tot.Vol(GWh)	2.80	4.46	4.31	4.33	3.69	3.64	3.97

Trades by Order Type

Delivery Day		06.05	07.05	08.05	09.05	10.05	11.05	12.05	
Ord Price Type		Sell & Buy Trades in (GWh) per Price Type							(%)
PPT	(S)	0.000	0.000	0.000	0.000	0.000	0.000	0.000	0.00%
HBD	(S)	0.962	1.499	1.993	1.767	1.660	1.641	1.889	95.16%
BLK	(S)	0.000	0.000	0.000	0.000	0.000	0.000	0.000	0.00%
CPL	(S)	0.439	0.732	0.163	0.400	0.187	0.178	0.096	4.84%
PPT	(B)	0.000	0.000	0.000	0.000	0.000	0.000	0.000	0.00%
HBD	(B)	1.329	2.182	1.176	1.927	1.469	1.655	1.804	90.92%
BLK	(B)	0.000	0.000	0.000	0.000	0.000	0.000	0.000	0.00%
CPL	(B)	0.072	0.049	0.980	0.240	0.378	0.164	0.180	9.08%
		Sell & Buy Orders Traded per Price Type							(%)
PPT	(S)	0	0	0	0	0	0	0	0.00%
HBD	(S)	155	234	405	360	310	372	271	100.00%
BLK	(S)	0	0	0	0	0	0	0	0.00%
PPT	(B)	0	0	0	0	0	0	0	0.00%
HBD	(B)	823	592	532	554	945	738	677	100.00%
BLK	(B)	0	0	0	0	0	0	0	0.00%

- MCP** Market Clearing Price (€/MWh)
- PPT** Priority Price-Taking
- HBD** Hybrid
- BLK** Block
- CPL** Market Coupling Flow

Trade's Volume Mix

	Sell - MWh	Buy - MWh	
Lignite (0.0%)	0	0	(0.0%)
Crete Conv. (0.0%)	0	0	(0.0%)
Gas (29.2%)	580	65	(3.3%)
Hydro (2.5%)	50	0	(0.0%)
Imports (4.8%)	96		
RES (48.9%)	970	1,440	(72.6%)
Crete RES (0.0%)	0	0	(0.0%)
BESS (0.0%)	0	0	(0.0%)
HV Load (2.1%)	41	42	(2.1%)
MV Load (3.4%)	67	63	(3.2%)
LV Load (9.0%)	179	179	(9.0%)
Crete Load (0.0%)	0	0	(0.0%)
Pumping (0.0%)	0	15	(0.7%)
Exports		180	(9.1%)
Sys.Losses (0.0%)	0	0	(0.0%)
D/R Load (0.0%)	0	0	(0.0%)

