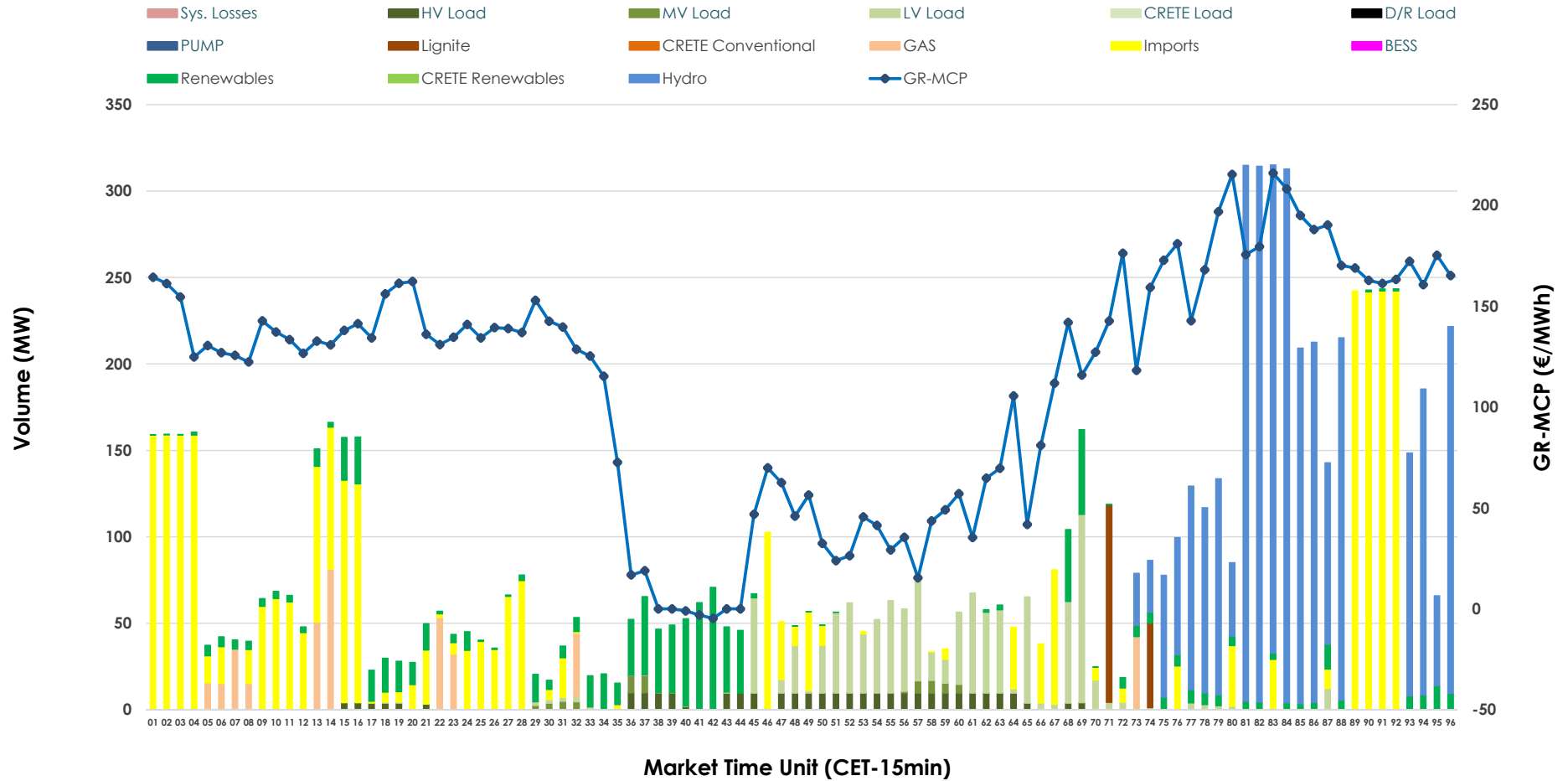


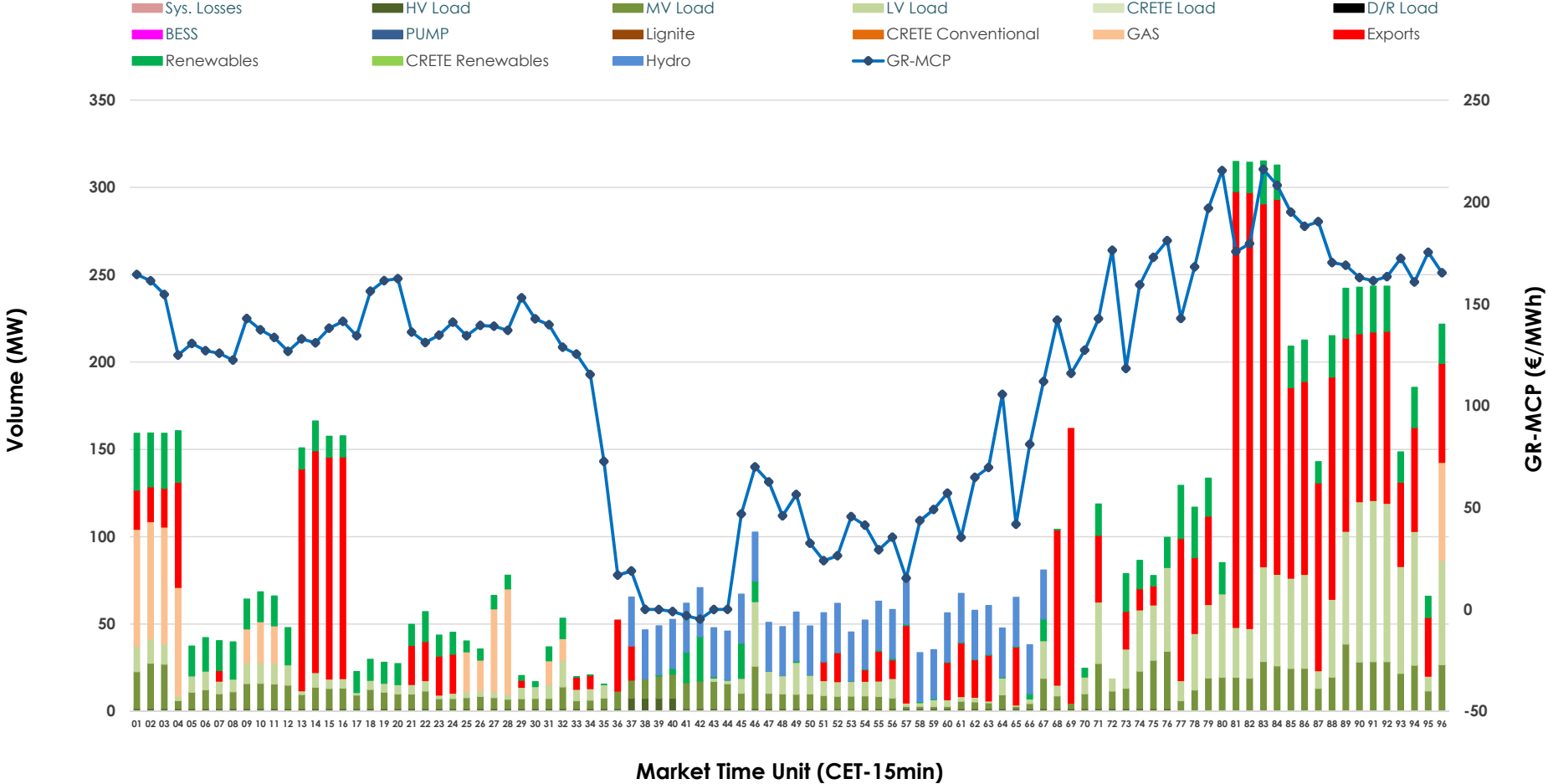


# IDA '1' Market Outlook

09.06.2026 IDA '1' Market - Sell



### 09.06.2026 IDA '1' Market - Buy



### GR Bidding Zone Weekly Figures

Delivery Day	03.06	04.06	05.06	06.06	07.06	08.06	09.06
	👇 -12%	👆 4%	👆 31%	👇 -30%	👇 -31%	👆 74%	👆 18%
<b>Avg.MCP (€/MWh)</b>	83.58	86.77	114.04	80.04	55.54	96.43	113.63
<b>Max.MCP (€/MWh)</b>	154.37	219.59	187.06	156.50	142.61	199.66	216.03
<b>Min.MCP (€/MWh)</b>	-10.09	1.23	29.00	-11.00	-14.00	1.00	-4.76
	👆 23%	👇 -34%	👆 23%	👆 15%	👆 30%	👆 7%	👇 -34%
<b>Tot.Vol(GWh)</b>	5.34	3.50	4.29	4.93	6.42	6.87	4.54

### Trades by Order Type

Delivery Day		03.06	04.06	05.06	06.06	07.06	08.06	09.06	
<b>Ord Price Type</b>		Sell & Buy Trades in (GWh) per Price Type							(%)
<b>PPT</b>	(S)	0.000	0.000	0.000	0.000	0.000	0.000	0.000	0.00%
<b>HBD</b>	(S)	2.333	0.551	1.285	2.180	1.634	3.130	1.484	65.42%
<b>BLK</b>	(S)	0.000	0.000	0.000	0.000	0.000	0.000	0.000	0.00%
<b>CPL</b>	(S)	0.338	1.200	0.862	0.286	1.574	0.307	0.785	34.58%
<b>PPT</b>	(B)	0.000	0.000	0.000	0.000	0.000	0.000	0.000	0.00%
<b>HBD</b>	(B)	1.998	1.626	1.655	1.325	3.074	1.796	1.388	61.16%
<b>BLK</b>	(B)	0.000	0.000	0.000	0.000	0.000	0.000	0.000	0.00%
<b>CPL</b>	(B)	0.673	0.125	0.492	1.142	0.134	1.641	0.881	38.84%
		Sell & Buy Orders Traded per Price Type							(%)
<b>PPT</b>	(S)	0	0	0	0	0	0	0	0.00%
<b>HBD</b>	(S)	466	216	208	209	202	369	211	100.00%
<b>BLK</b>	(S)	0	0	0	0	0	0	0	0.00%
<b>PPT</b>	(B)	0	0	0	0	0	0	0	0.00%
<b>HBD</b>	(B)	1055	850	889	797	731	1013	820	100.00%
<b>BLK</b>	(B)	0	0	0	0	0	0	0	0.00%

- MCP** Market Clearing Price (€/MWh)
- PPT** Priority Price-Taking
- HBD** Hybrid
- BLK** Block
- CPL** Market Coupling Flow

### Trade's Volume Mix

		Sell - MWh		Buy - MWh	
<b>Lignite</b>	(1.8%)	41	0	0	(0.0%)
<b>Crete Conv.</b>	(0.0%)	0	0	0	(0.0%)
<b>Gas</b>	(4.1%)	94	140	0	(6.2%)
<b>Hydro</b>	(34.3%)	778	217	0	(9.6%)
<b>Imports</b>	(34.6%)	785	0	0	(0.0%)
<b>RES</b>	(10.5%)	237	277	0	(12.2%)
<b>Crete RES</b>	(0.0%)	0	0	0	(0.0%)
<b>BESS</b>	(0.0%)	0	0	0	(0.0%)
<b>HV Load</b>	(3.1%)	69	35	0	(1.5%)
<b>MV Load</b>	(0.7%)	16	306	0	(13.5%)
<b>LV Load</b>	(11.0%)	249	414	0	(18.2%)
<b>Crete Load</b>	(0.0%)	0	0	0	(0.0%)
<b>Pumping</b>	(0.0%)	0	0	0	(0.0%)
<b>Exports</b>		0	881	0	(38.8%)
<b>Sys.Losses</b>	(0.0%)	0	0	0	(0.0%)
<b>D/R Load</b>	(0.0%)	0	0	0	(0.0%)

