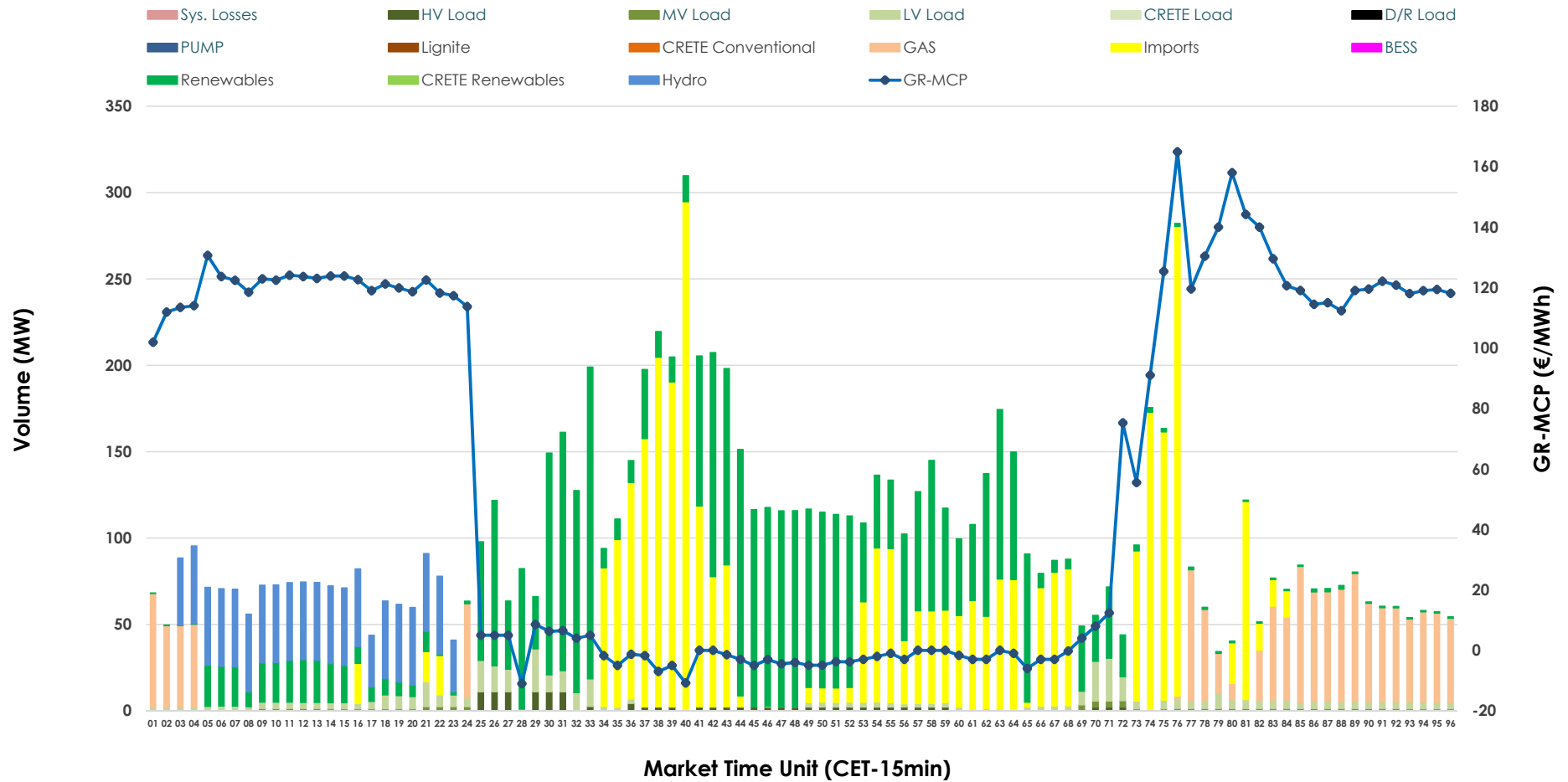


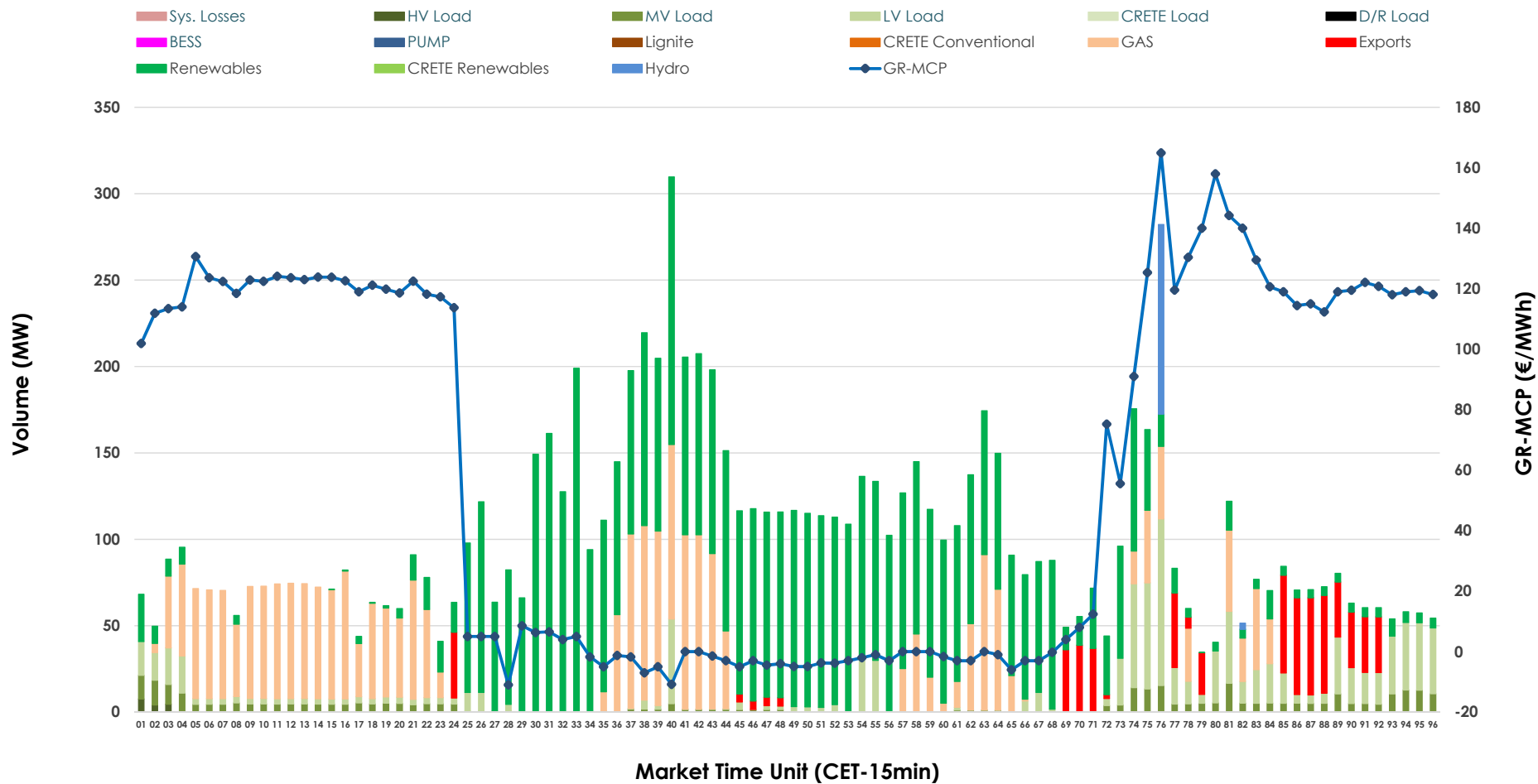


IDA '1' Market Outlook

24.05.2026 IDA '1' Market - Sell



24.05.2026 IDA '1' Market - Buy



GR Bidding Zone Weekly Figures

Delivery Day	18.05	19.05	20.05	21.05	22.05	23.05	24.05
			↓ -48%	↗ 26%	↗ 7%	↘ -20%	↘ -17%
Avg.MCP (€/MWh)	N/M	130.04	67.48	85.17	91.40	73.10	60.85
Max.MCP (€/MWh)	N/M	248.28	209.51	224.45	165.99	185.18	164.90
Min.MCP (€/MWh)	N/M	72.72	-9.66	-16.86	-6.39	-3.17	-11.00
			↗ 17%	↘ -1%	↗ 40%	↘ -12%	↗ 3%
Tot.Vol(GWh)	N/M	3.33	3.89	3.87	5.40	4.77	4.92

Trades by Order Type

Delivery Day	18.05	19.05	20.05	21.05	22.05	23.05	24.05	
Ord Price Type	Sell & Buy Trades in (GWh) per Price Type							(%)
PPT (S)		0.000	0.000	0.000	0.000	0.000	0.000	0.00%
HBD (S)		0.966	1.790	1.934	2.290	1.726	1.618	65.73%
BLK (S)		0.000	0.000	0.000	0.000	0.000	0.000	0.00%
CPL (S)		0.697	0.156	0.000	0.412	0.660	0.844	34.27%
PPT (B)		0.000	0.000	0.000	0.000	0.000	0.000	0.00%
HBD (B)		1.537	1.820	1.934	1.613	2.280	2.313	93.93%
BLK (B)		0.000	0.000	0.000	0.000	0.000	0.000	0.00%
CPL (B)		0.126	0.126	0.000	1.089	0.106	0.149	6.07%
	Sell & Buy Orders Traded per Price Type							(%)
PPT (S)		0	0	0	0	0	0	0.00%
HBD (S)		393	388	224	290	415	378	100.00%
BLK (S)		0	0	0	0	0	0	0.00%
PPT (B)		0	0	0	0	0	0	0.00%
HBD (B)		796	684	783	639	784	672	100.00%
BLK (B)		0	0	0	0	0	0	0.00%

- MCP** Market Clearing Price (€/MWh)
- PPT** Priority Price-Taking
- HBD** Hybrid
- BLK** Block
- CPL** Market Coupling Flow

Trade's Volume Mix

	Sell - MWh	Buy - MWh	
Lignite (0.0%)	0	0	(0.0%)
Crete Conv. (0.0%)	0	0	(0.0%)
Gas (12.9%)	317	652	(26.5%)
Hydro (9.2%)	227	28	(1.1%)
Imports (34.3%)	844		
RES (37.1%)	912	1,279	(52.0%)
Crete RES (0.0%)	0	0	(0.0%)
BESS (0.0%)	0	0	(0.0%)
HV Load (1.3%)	32	4	(0.2%)
MV Load (0.7%)	17	94	(3.8%)
LV Load (4.6%)	113	255	(10.4%)
Crete Load (0.0%)	0	0	(0.0%)
Pumping (0.0%)	0	0	(0.0%)
Exports		149	(6.1%)
Sys.Losses (0.0%)	0	0	(0.0%)
D/R Load (0.0%)	0	0	(0.0%)

