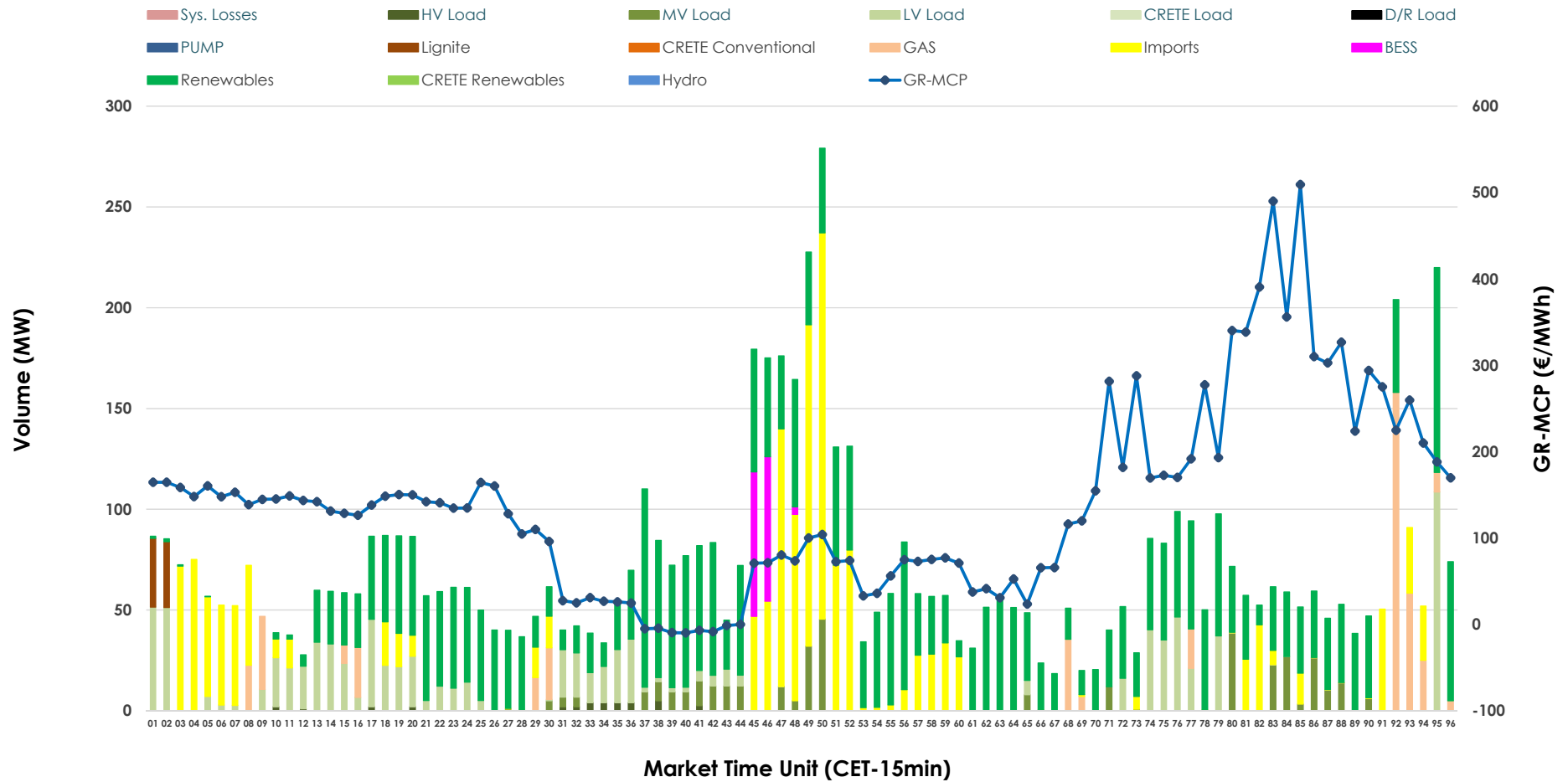


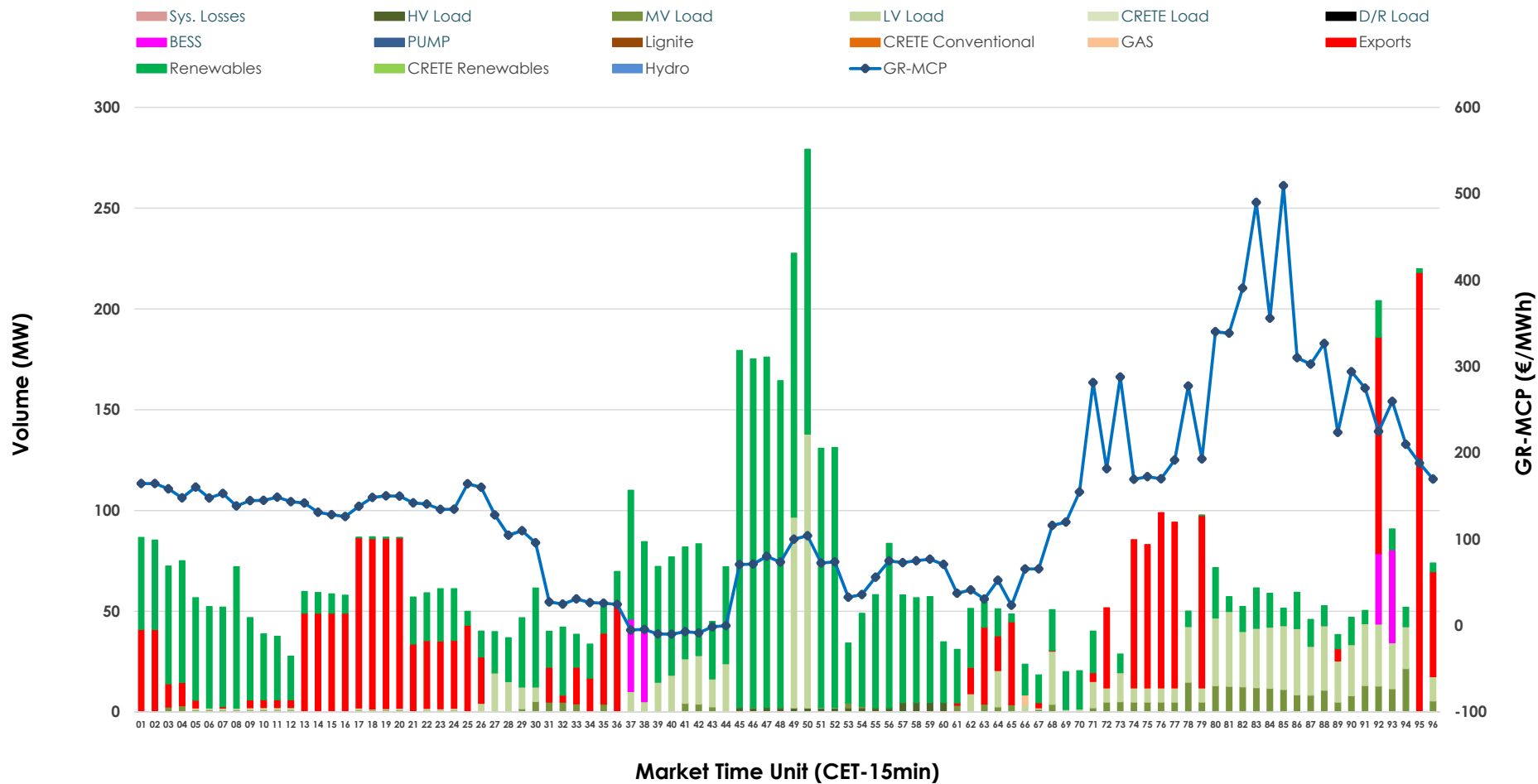


IDA '2' Market Outlook

30.06.2026 IDA '2' Market - Sell



30.06.2026 IDA '2' Market - Buy



GR Bidding Zone Weekly Figures

Delivery Day	24.06	25.06	26.06	27.06	28.06	29.06	30.06
	↗ 12%	↘ -20%	↘ -27%	↗ 1%	↘ -22%	↗ 50%	↗ 37%
Avg.MCP (€/MWh)	150.06	119.57	86.86	87.62	68.04	101.76	139.08
Max.MCP (€/MWh)	275.57	280.64	187.76	198.96	147.37	280.03	509.29
Min.MCP (€/MWh)	50.28	28.12	-10.00	-9.13	-11.32	-0.38	-9.83
	↗ 47%	↘ -19%	↘ -38%	↗ 87%	↘ -28%	↘ -15%	↗ 6%
Tot.Vol(GWh)	5.62	4.52	2.82	5.28	3.83	3.24	3.44

Trades by Order Type

Delivery Day		24.06	25.06	26.06	27.06	28.06	29.06	30.06	
Ord Price Type		Sell & Buy Trades in (GWh) per Price Type							(%)
PPT	(S)	0.000	0.000	0.000	0.000	0.000	0.000	0.000	0.00%
HBD	(S)	0.849	0.986	1.343	2.496	0.917	1.523	1.318	76.53%
BLK	(S)	0.000	0.000	0.000	0.000	0.000	0.000	0.000	0.00%
CPL	(S)	1.960	1.276	0.067	0.145	0.996	0.095	0.404	23.47%
PPT	(B)	0.000	0.000	0.000	0.000	0.000	0.000	0.000	0.00%
HBD	(B)	2.019	1.330	0.947	1.304	1.685	0.757	1.236	71.77%
BLK	(B)	0.000	0.000	0.000	0.000	0.000	0.000	0.000	0.00%
CPL	(B)	0.790	0.932	0.462	1.337	0.228	0.861	0.486	28.23%
		Sell & Buy Orders Traded per Price Type							(%)
PPT	(S)	0	0	0	0	0	0	0	0.00%
HBD	(S)	245	321	326	470	249	424	315	100.00%
BLK	(S)	0	0	0	0	0	0	0	0.00%
PPT	(B)	0	0	0	0	0	0	0	0.00%
HBD	(B)	524	377	292	476	447	250	366	100.00%
BLK	(B)	0	0	0	0	0	0	0	0.00%

- MCP** Market Clearing Price (€/MWh)
- PPT** Priority Price-Taking
- HBD** Hybrid
- BLK** Block
- CPL** Market Coupling Flow

Trade's Volume Mix

	Sell - MWh	Buy - MWh	
Lignite (1.0%)	17	0	(0.0%)
Crete Conv. (0.0%)	0	0	(0.0%)
Gas (6.6%)	113	1	(0.1%)
Hydro (0.0%)	0	0	(0.0%)
Imports (23.5%)	404		
RES (47.5%)	818	849	(49.3%)
Crete RES (0.0%)	0	0	(0.0%)
BESS (2.1%)	37	38	(2.2%)
HV Load (0.5%)	9	11	(0.7%)
MV Load (5.3%)	92	78	(4.5%)
LV Load (13.6%)	233	259	(15.0%)
Crete Load (0.0%)	0	0	(0.0%)
Pumping (0.0%)	0	0	(0.0%)
Exports		486	(28.2%)
Sys.Losses (0.0%)	0	0	(0.0%)
D/R Load (0.0%)	0	0	(0.0%)

