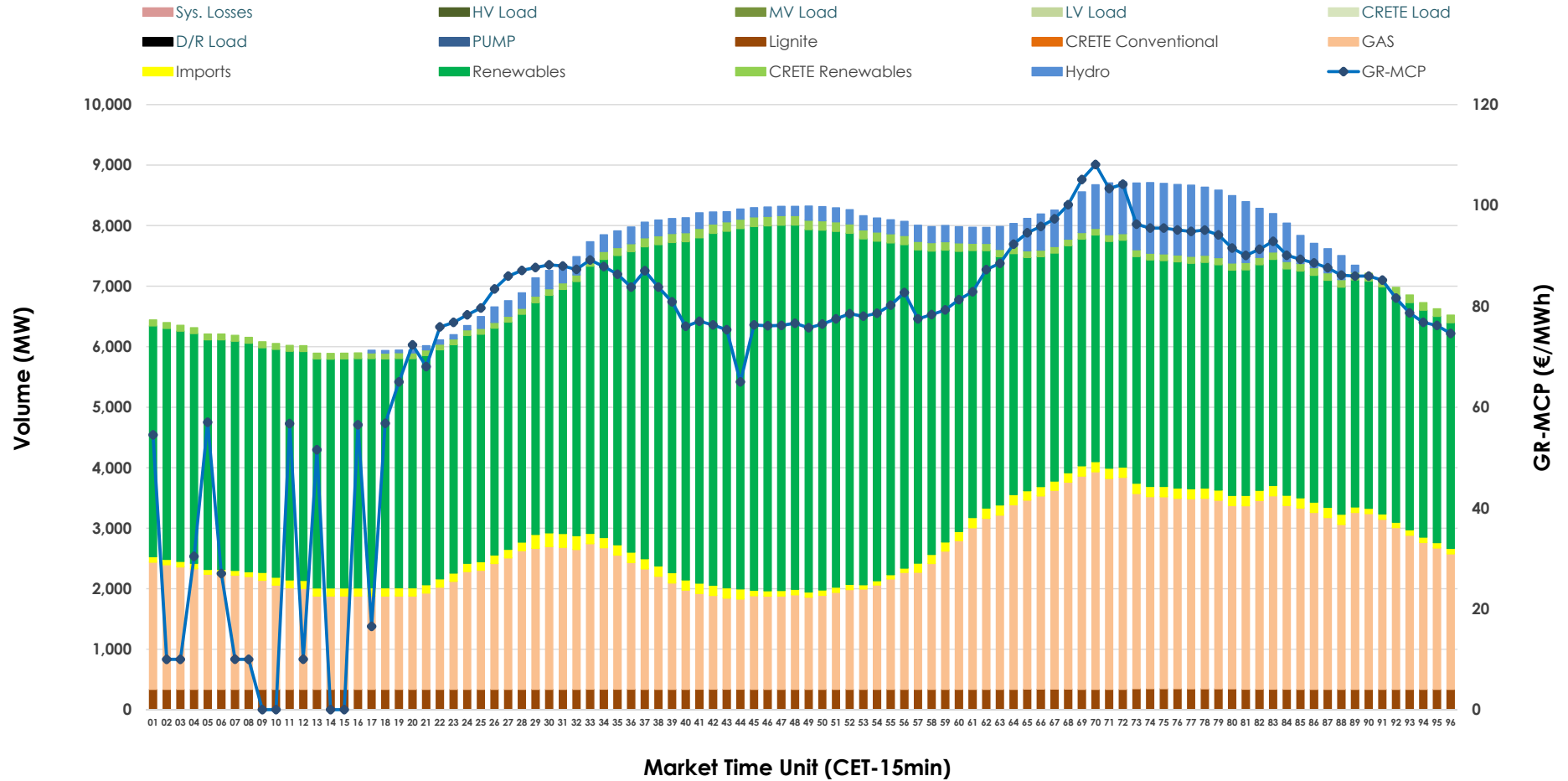


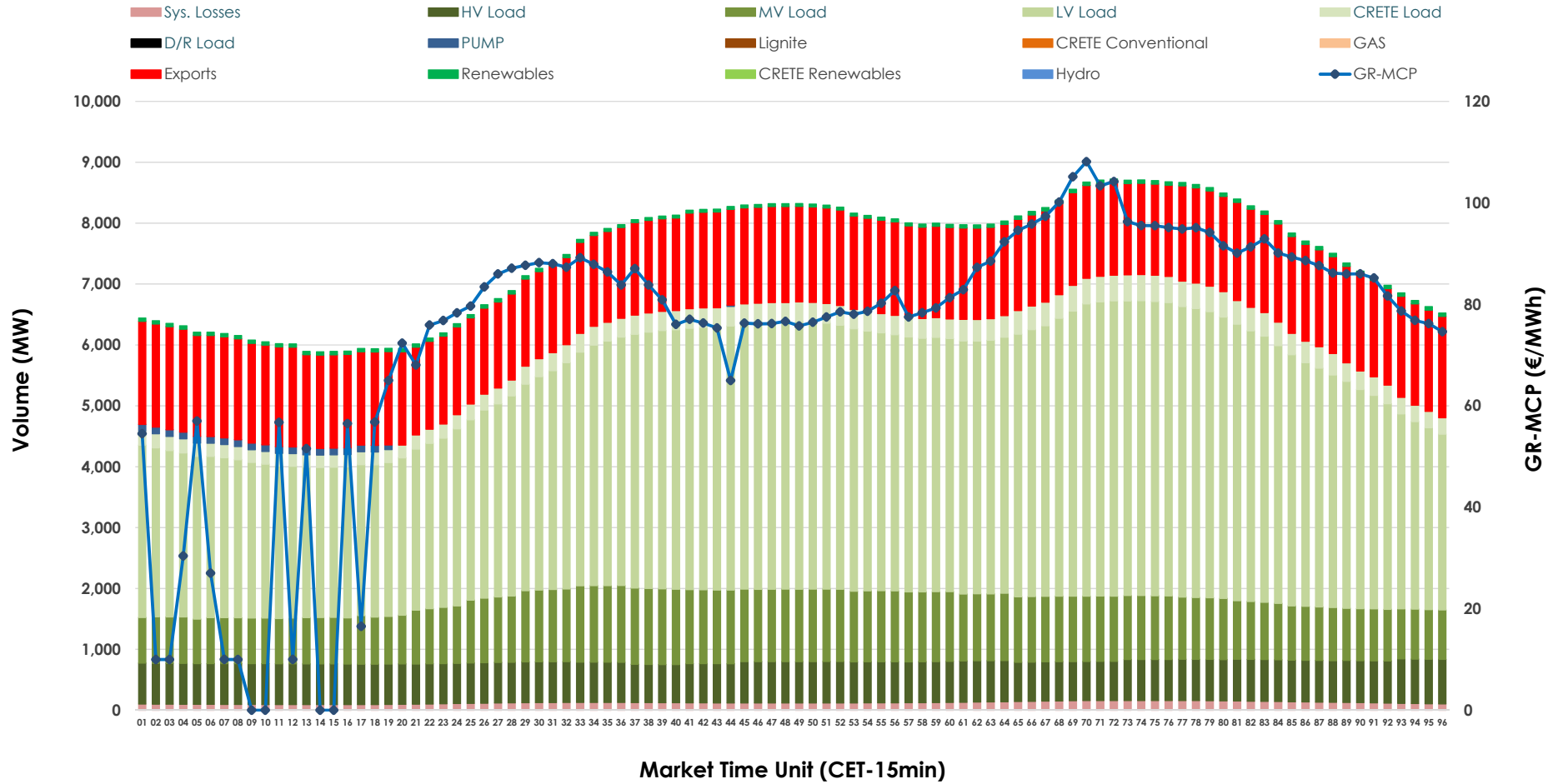


Day-Ahead Market Outlook

05.01.2026 Day-Ahead Market - Sell



05.01.2026 Day-Ahead Market - Buy



GR Bidding Zone Weekly Figures

Delivery Day	30.12	31.12	01.01	02.01	03.01	04.01	05.01
	↓ -7%	↑ 5%	↓ -21%	↑ 19%	↓ -6%	↑ 2%	↓ -19%
Avg.MCP (€/MWh)	95.23	100.45	79.44	94.59	89.27	90.93	73.73
Max.MCP (€/MWh)	147.44	182.30	140.47	125.85	114.95	123.30	108.12
Min.MCP (€/MWh)	0.20	74.41	10.23	26.67	74.94	60.00	0.01
	→ 1%	↑ 2%	↓ -3%	↑ 4%	↑ 6%	↓ -5%	↓ -1%
Tot.Vol(GWh)	352.11	359.47	348.40	362.87	383.02	363.66	358.93

Trades by Order Type

Delivery Day		30.12	31.12	01.01	02.01	03.01	04.01	05.01	
Ord Price Type		Sell & Buy Trades in (GWh) per Price Type							(%)
PPT	(S)	54.153	53.153	50.133	53.556	67.086	68.347	69.218	38.57%
HBD	(S)	69.659	74.228	66.925	69.516	77.856	73.611	68.330	38.07%
BLK	(S)	47.936	44.790	39.393	44.873	46.419	39.715	41.920	23.36%
CPL	(S)	4.309	7.563	17.750	13.493	0.150	0.156	0.000	0.00%
PPT	(B)	15.576	15.549	15.514	15.498	16.042	16.629	14.953	8.33%
HBD	(B)	147.958	150.532	146.526	152.286	143.346	130.882	136.915	76.29%
BLK	(B)	0.000	0.000	0.000	0.000	0.000	0.000	0.000	0.00%
CPL	(B)	12.522	13.654	12.161	13.653	32.122	34.319	27.600	15.38%
		Sell & Buy Orders Traded per Price Type							(%)
PPT	(S)	1477	1426	1345	1382	1356	1381	1408	37.13%
HBD	(S)	2857	2813	2590	2834	2742	2525	2371	62.53%
BLK	(S)	16	17	13	18	20	19	13	0.34%
PPT	(B)	2347	2361	2457	2370	2344	2484	2327	35.16%
HBD	(B)	4186	4103	4489	4132	4155	4106	4291	64.84%
BLK	(B)	0	0	0	0	0	0	0	0.00%

MCP Market Clearing Price (€/MWh)
PPT Priority Price-Taking
HBD Hybrid
BLK Block
CPL Market Coupling Flow

Trade's Volume Mix

		Sell - MWh	Buy - MWh	
Lignite	(4.5%)	8,107	0	(0.0%)
Crete Conv.	(0.0%)	0	0	(0.0%)
Gas	(30.5%)	54,791	0	(0.0%)
Hydro	(4.1%)	7,438	0	(0.0%)
Imports	(1.9%)	3,345		
RES	(57.3%)	102,900	1,259	(0.7%)
Crete RES	(1.6%)	2,887	0	(0.0%)
HV Load	(0.0%)	0	16,091	(9.0%)
MV Load	(0.0%)	0	24,185	(13.5%)
LV Load	(0.0%)	0	89,906	(50.1%)
Crete Load	(0.0%)	0	7,421	(4.1%)
Pumping	(0.0%)	0	520	(0.3%)
Exports			37,127	(20.7%)
Sys.Losses	(0.0%)	0	2,958	(1.6%)
D/R Load	(0.0%)	0	0	(0.0%)

