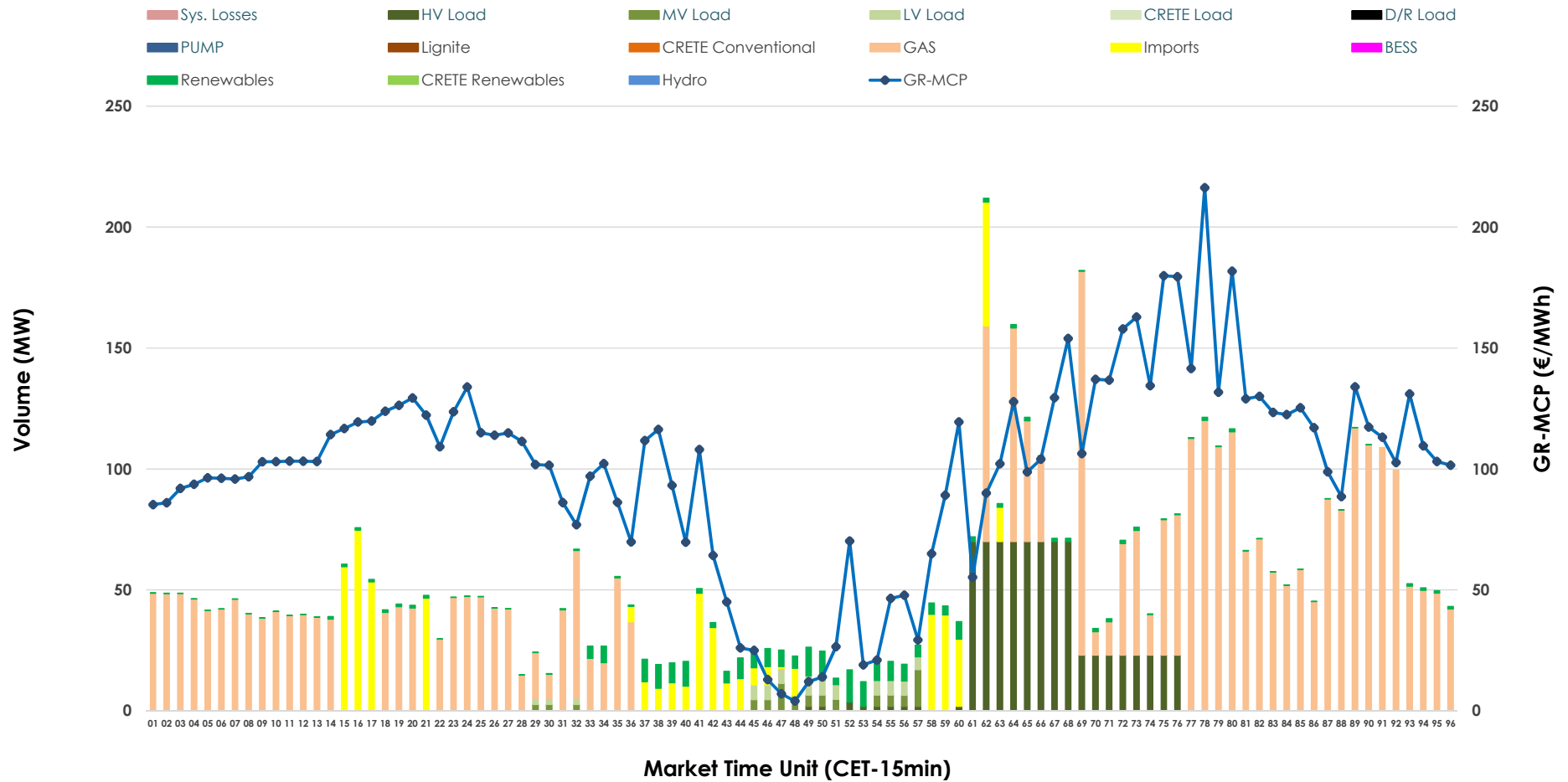


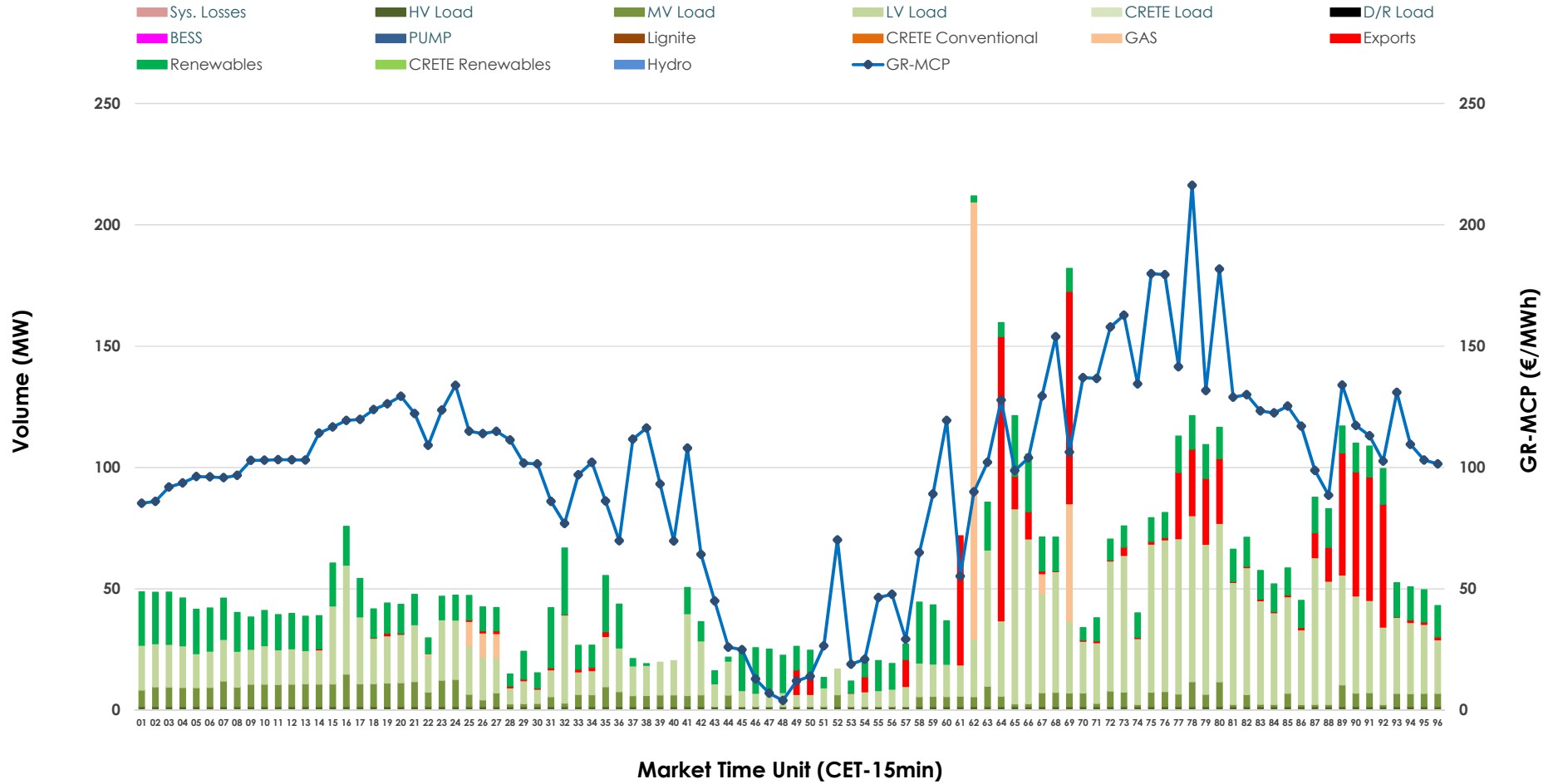


IDA '1' Market Outlook

19.03.2026 IDA '1' Market - Sell



19.03.2026 IDA '1' Market - Buy



GR Bidding Zone Weekly Figures

Delivery Day	13.03	14.03	15.03	16.03	17.03	18.03	19.03
	👇 -28%	👆 4%	👇 -3%	👆 26%	👆 16%	👇 -23%	👆 12%
Avg.MCP (€/MWh)	78.36	81.45	78.90	99.43	114.99	89.03	99.89
Max.MCP (€/MWh)	206.44	183.47	158.04	199.06	209.10	160.11	216.29
Min.MCP (€/MWh)	-24.30	-17.57	-15.50	13.78	48.13	1.56	4.00
	👆 14%	👇 -36%	👇 -20%	👇 -1%	👆 58%		
Tot.Vol(GWh)	5.27	3.37	2.69	2.67	4.22	N/M	2.63

Trades by Order Type

Delivery Day		13.03	14.03	15.03	16.03	17.03	18.03	19.03	
Ord Price Type		Sell & Buy Trades in (GWh) per Price Type							(%)
PPT	(S)	0.000	0.000	0.000	0.000	0.000	0.000	0.000	0.00%
HBD	(S)	2.606	1.018	0.554	0.860	1.061	0.000	1.168	88.77%
BLK	(S)	0.000	0.000	0.000	0.000	0.000	0.000	0.000	0.00%
CPL	(S)	0.029	0.665	0.793	0.473	1.049	0.000	0.148	11.23%
PPT	(B)	0.000	0.000	0.000	0.000	0.000	0.000	0.000	0.00%
HBD	(B)	1.733	1.503	1.282	1.083	1.968	0.000	1.146	87.06%
BLK	(B)	0.000	0.000	0.000	0.000	0.000	0.000	0.000	0.00%
CPL	(B)	0.902	0.180	0.066	0.251	0.142	0.000	0.170	12.94%
		Sell & Buy Orders Traded per Price Type							(%)
PPT	(S)	0	0	0	0	0	0	0	0.00%
HBD	(S)	300	327	203	156	209	291	216	100.00%
BLK	(S)	0	0	0	0	0	0	0	0.00%
PPT	(B)	0	0	0	0	0	0	0	0.00%
HBD	(B)	1203	882	715	761	835	802	790	100.00%
BLK	(B)	0	0	0	0	0	0	0	0.00%

- MCP** Market Clearing Price (€/MWh)
- PPT** Priority Price-Taking
- HBD** Hybrid
- BLK** Block
- CPL** Market Coupling Flow

Trade's Volume Mix

		Sell - MWh		Buy - MWh	
Lignite	(0.0%)	0	0	0	(0.0%)
Crete Conv.	(0.0%)	0	0	0	(0.0%)
Gas	(67.2%)	884	67		(5.1%)
Hydro	(0.0%)	0	0		(0.0%)
Imports	(11.2%)	148			
RES	(4.3%)	57	299		(22.7%)
Crete RES	(0.0%)	0	0		(0.0%)
BESS	(0.0%)	0	0		(0.0%)
HV Load	(14.5%)	191	36		(2.7%)
MV Load	(1.5%)	19	120		(9.1%)
LV Load	(1.3%)	17	624		(47.4%)
Crete Load	(0.0%)	0	0		(0.0%)
Pumping	(0.0%)	0	0		(0.0%)
Exports				170	(12.9%)
Sys.Losses	(0.0%)	0	0		(0.0%)
D/R Load	(0.0%)	0	0		(0.0%)

