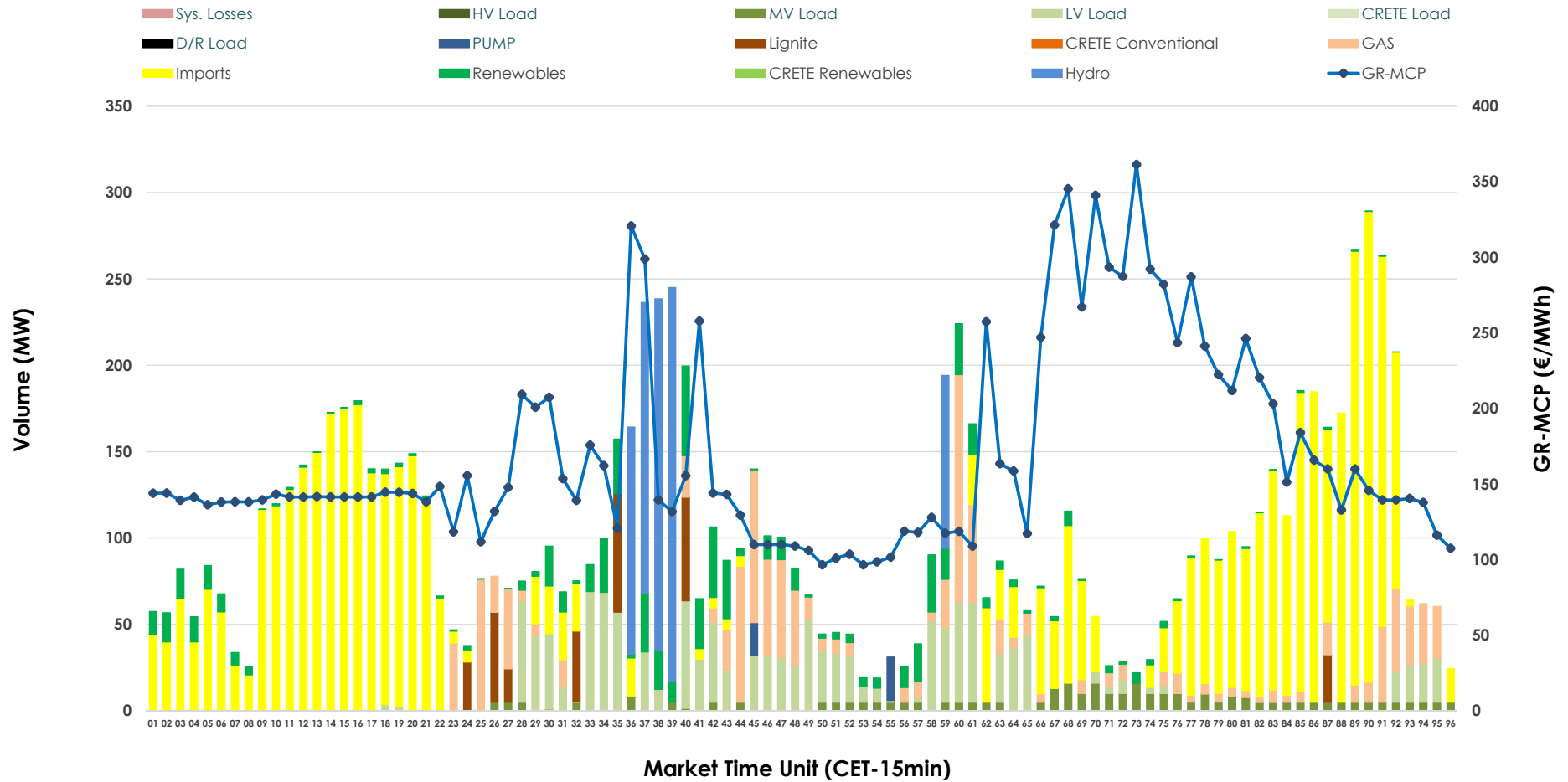


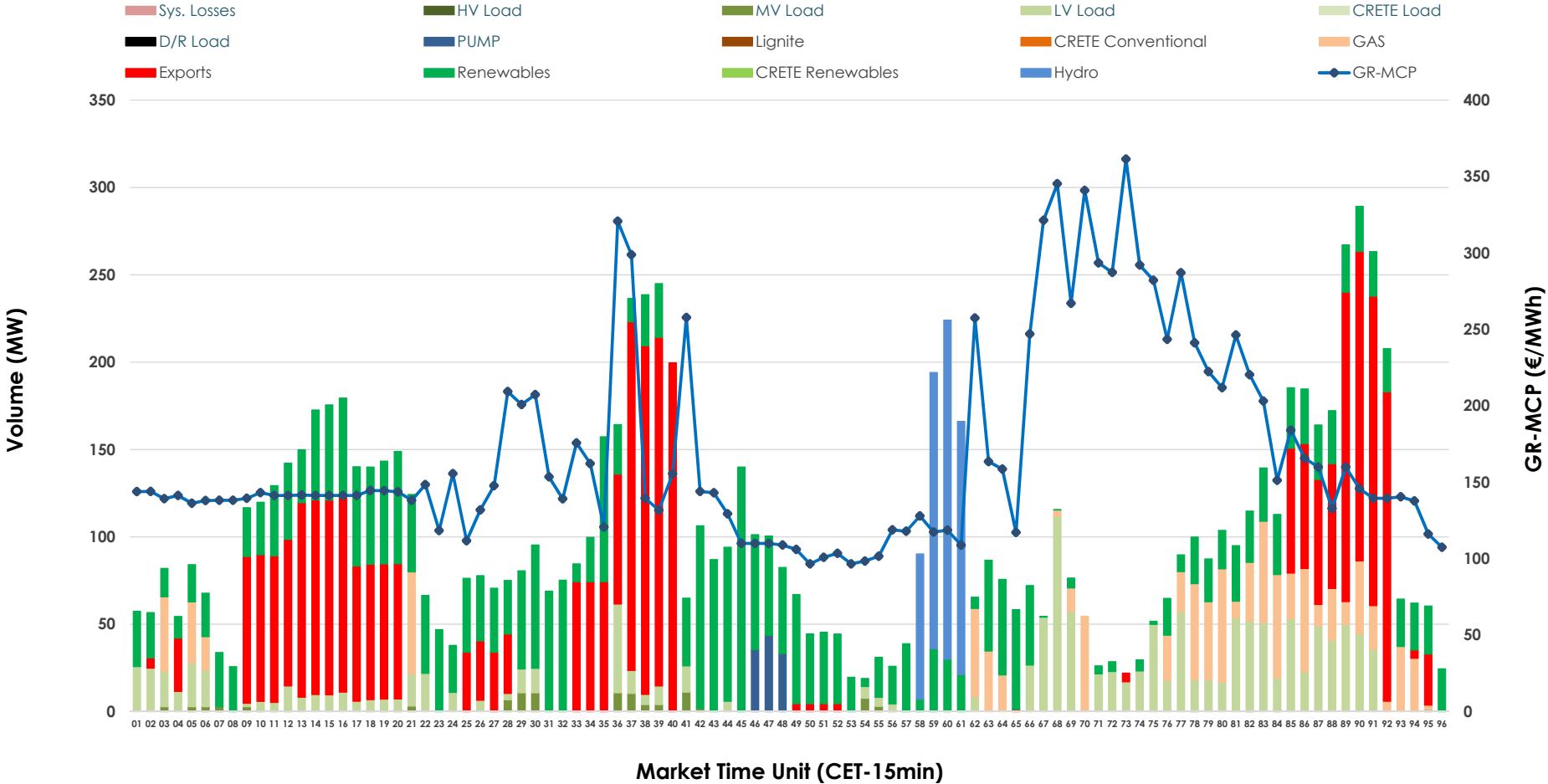


IDA '2' Market Outlook

23.01.2026 IDA '2' Market - Sell



23.01.2026 IDA '2' Market - Buy



GR Bidding Zone Weekly Figures

Delivery Day	17.01	18.01	19.01	20.01	21.01	22.01	23.01
	👇 -27%	👈 11%	➡ 0%	👈 6%	👈 35%	👈 43%	👇 -20%
Avg.MCP (€/MWh)	93.22	103.47	103.43	109.22	147.63	211.29	168.88
Max.MCP (€/MWh)	146.74	158.25	171.33	193.60	222.31	442.65	361.41
Min.MCP (€/MWh)	66.72	75.84	61.84	73.22	106.92	86.37	96.61
		👇 -41%	👈 78%	👈 35%	👈 47%	👇 -30%	
Tot.Vol(GWh)	N/M	3.46	2.04	3.63	4.88	7.17	5.00

Trades by Order Type

Delivery Day		17.01	18.01	19.01	20.01	21.01	22.01	23.01	
Ord Price Type		Sell & Buy Trades in (GWh) per Price Type							(%)
PPT	(S)	0.000	0.000	0.000	0.000	0.000	0.000	0.000	0.00%
HBD	(S)	0.000	1.111	0.873	1.781	1.698	2.350	1.187	47.50%
BLK	(S)	0.000	0.000	0.000	0.000	0.000	0.000	0.000	0.00%
CPL	(S)	0.000	0.616	0.148	0.032	0.743	1.233	1.312	52.50%
PPT	(B)	0.000	0.000	0.000	0.000	0.000	0.000	0.000	0.00%
HBD	(B)	0.000	1.725	0.963	1.079	1.246	1.738	1.646	65.86%
BLK	(B)	0.000	0.000	0.000	0.000	0.000	0.000	0.000	0.00%
CPL	(B)	0.000	0.003	0.058	0.734	1.196	1.844	0.853	34.14%
		Sell & Buy Orders Traded per Price Type							(%)
PPT	(S)	0	0	0	0	0	0	0	0.00%
HBD	(S)	0	248	251	345	277	465	254	100.00%
BLK	(S)	0	0	0	0	0	0	0	0.00%
PPT	(B)	0	0	0	0	0	0	0	0.00%
HBD	(B)	0	312	424	318	292	292	403	100.00%
BLK	(B)	0	0	0	0	0	0	0	0.00%

- MCP** Market Clearing Price (€/MWh)
- PPT** Priority Price-Taking
- HBD** Hybrid
- BLK** Block
- CPL** Market Coupling Flow

Trade's Volume Mix

		Sell - MWh		Buy - MWh	
Lignite	(3.0%)	74	0	0	(0.0%)
Crete Conv.	(0.0%)	0	0	0	(0.0%)
Gas	(12.3%)	308	248	0	(9.9%)
Hydro	(8.3%)	208	145	0	(5.8%)
Imports	(52.5%)	1,312	0	0	(52.5%)
RES	(7.2%)	179	844	0	(33.8%)
Crete RES	(0.0%)	0	0	0	(0.0%)
HV Load	(0.0%)	0	0	0	(0.0%)
MV Load	(3.5%)	87	27	0	(1.1%)
LV Load	(12.8%)	320	354	0	(14.2%)
Crete Load	(0.0%)	0	0	0	(0.0%)
Pumping	(0.4%)	11	28	0	(1.1%)
Exports		0	853	0	(34.1%)
Sys.Losses	(0.0%)	0	0	0	(0.0%)
D/R Load	(0.0%)	0	0	0	(0.0%)

