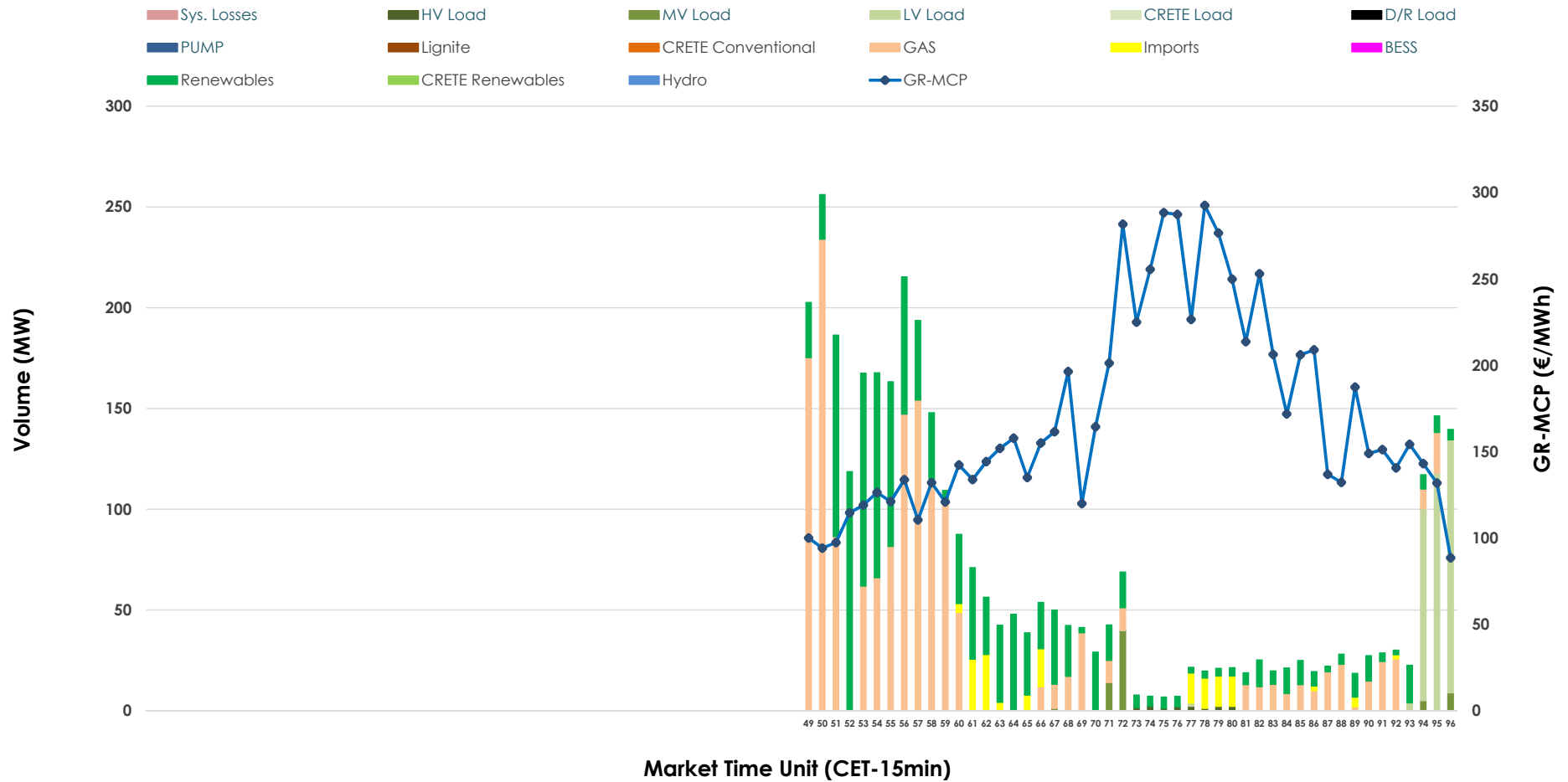


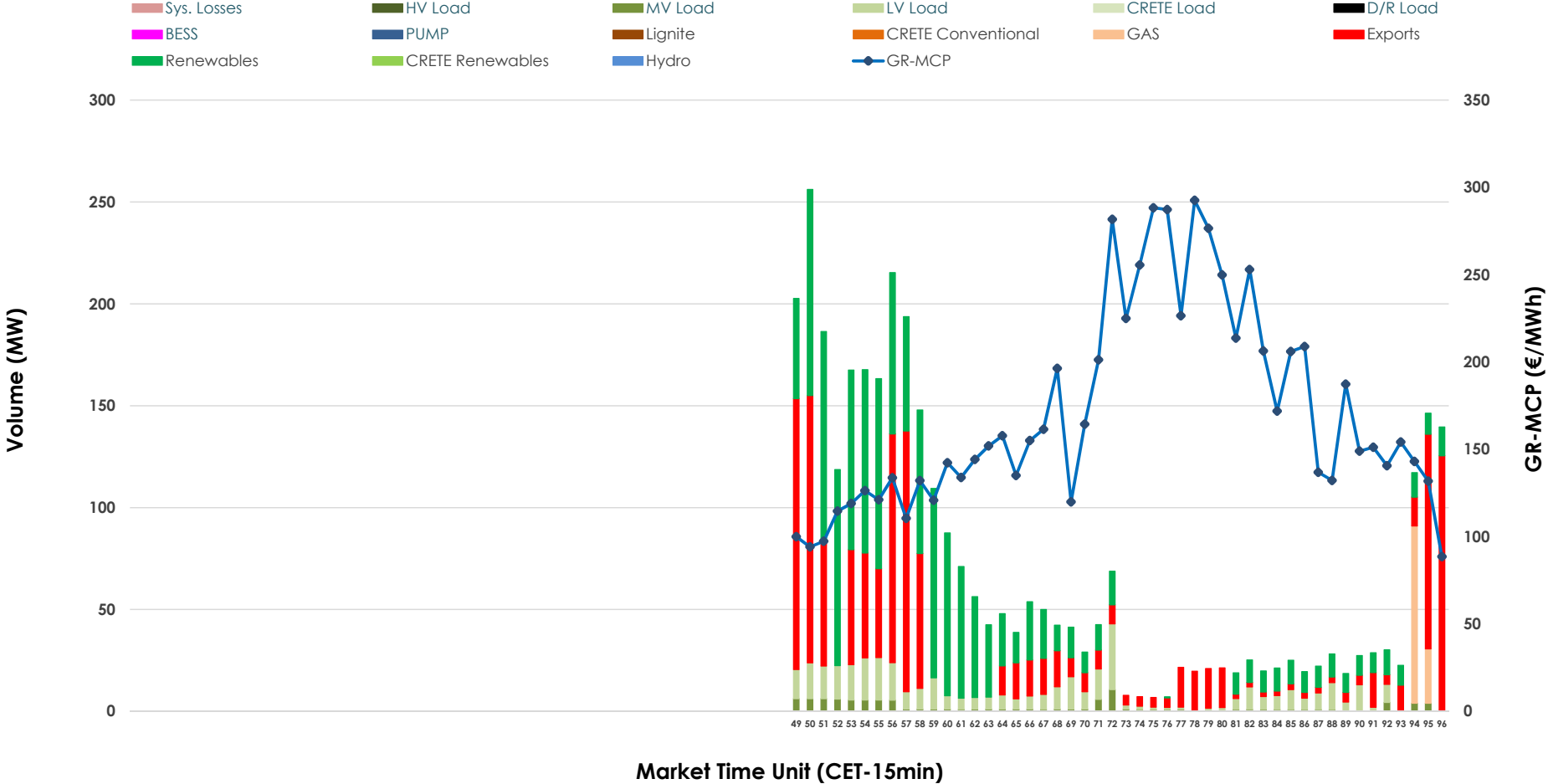


IDA '3' Market Outlook

23.03.2026 IDA '3' Market - Sell



23.03.2026 IDA '3' Market - Buy



GR Bidding Zone Weekly Figures

Delivery Day	17.03	18.03	19.03	20.03	21.03	22.03	23.03
	👇 -11%	👇 -17%	👆 42%	👇 -2%	👇 -17%	👇 -14%	👆 79%
Avg.MCP (€/MWh)	116.23	96.32	136.60	133.90	111.20	95.13	170.66
Max.MCP (€/MWh)	177.74	167.86	208.87	233.89	164.90	188.64	292.57
Min.MCP (€/MWh)	68.62	-1.80	81.08	63.67	23.69	-9.13	88.57
	👇 -29%	👆 114%	👇 -44%	👆 10%	👆 68%	👇 -64%	👆 20%
Tot.Vol(GWh)	1.82	3.90	2.17	2.39	4.02	1.43	1.71

Trades by Order Type

Delivery Day		17.03	18.03	19.03	20.03	21.03	22.03	23.03	
Ord Price Type		Sell & Buy Trades in (GWh) per Price Type							(%)
PPT	(S)	0.000	0.000	0.000	0.000	0.000	0.000	0.000	0.00%
HBD	(S)	0.460	0.722	0.520	1.020	1.230	0.638	0.817	95.39%
BLK	(S)	0.000	0.000	0.000	0.000	0.000	0.000	0.000	0.00%
CPL	(S)	0.452	1.228	0.563	0.176	0.778	0.078	0.039	4.61%
PPT	(B)	0.000	0.000	0.000	0.000	0.000	0.000	0.000	0.00%
HBD	(B)	0.876	1.923	0.997	0.695	1.920	0.524	0.528	61.71%
BLK	(B)	0.000	0.000	0.000	0.000	0.000	0.000	0.000	0.00%
CPL	(B)	0.036	0.027	0.086	0.501	0.088	0.192	0.328	38.29%
		Sell & Buy Orders Traded per Price Type							(%)
PPT	(S)	0	0	0	0	0	0	0	0.00%
HBD	(S)	217	180	257	213	149	224	168	100.00%
BLK	(S)	0	0	0	0	0	0	0	0.00%
PPT	(B)	0	0	0	0	0	0	0	0.00%
HBD	(B)	306	290	226	328	402	221	216	100.00%
BLK	(B)	0	0	0	0	0	0	0	0.00%

- MCP** Market Clearing Price (€/MWh)
- PPT** Priority Price-Taking
- HBD** Hybrid
- BLK** Block
- CPL** Market Coupling Flow

Trade's Volume Mix

	Sell - MWh	Buy - MWh	
Lignite	0	0	(0.0%)
Crete Conv.	0	0	(0.0%)
Gas	397	28	(3.3%)
Hydro	0	0	(0.0%)
Imports	39		
RES	313	371	(43.3%)
Crete RES	0	0	(0.0%)
BESS	0	0	(0.0%)
HV Load	4	0	(0.0%)
MV Load	17	26	(3.0%)
LV Load	86	103	(12.1%)
Crete Load	0	0	(0.0%)
Pumping	0	0	(0.0%)
Exports		328	(38.3%)
Sys.Losses	0	0	(0.0%)
D/R Load	0	0	(0.0%)

