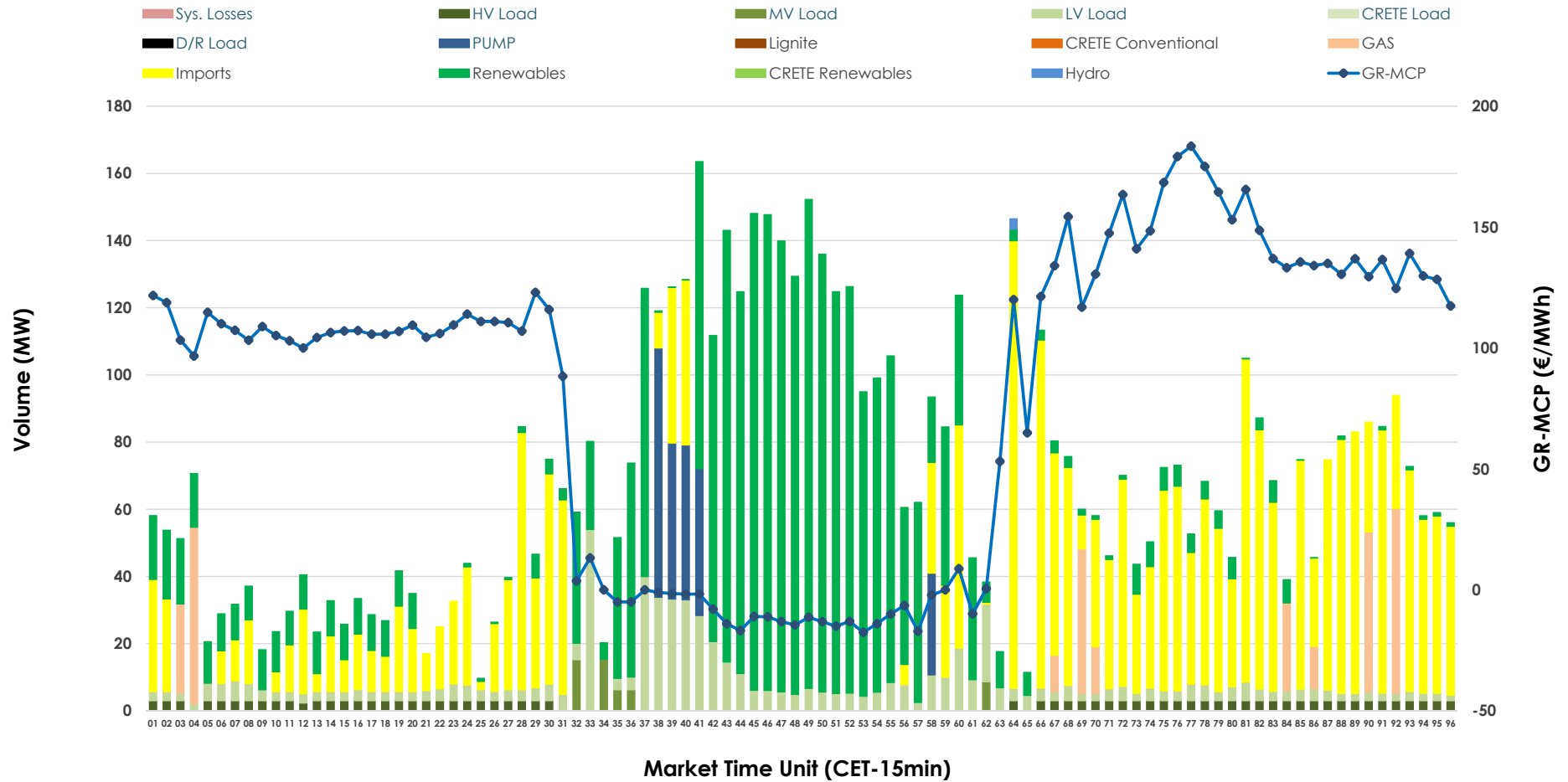


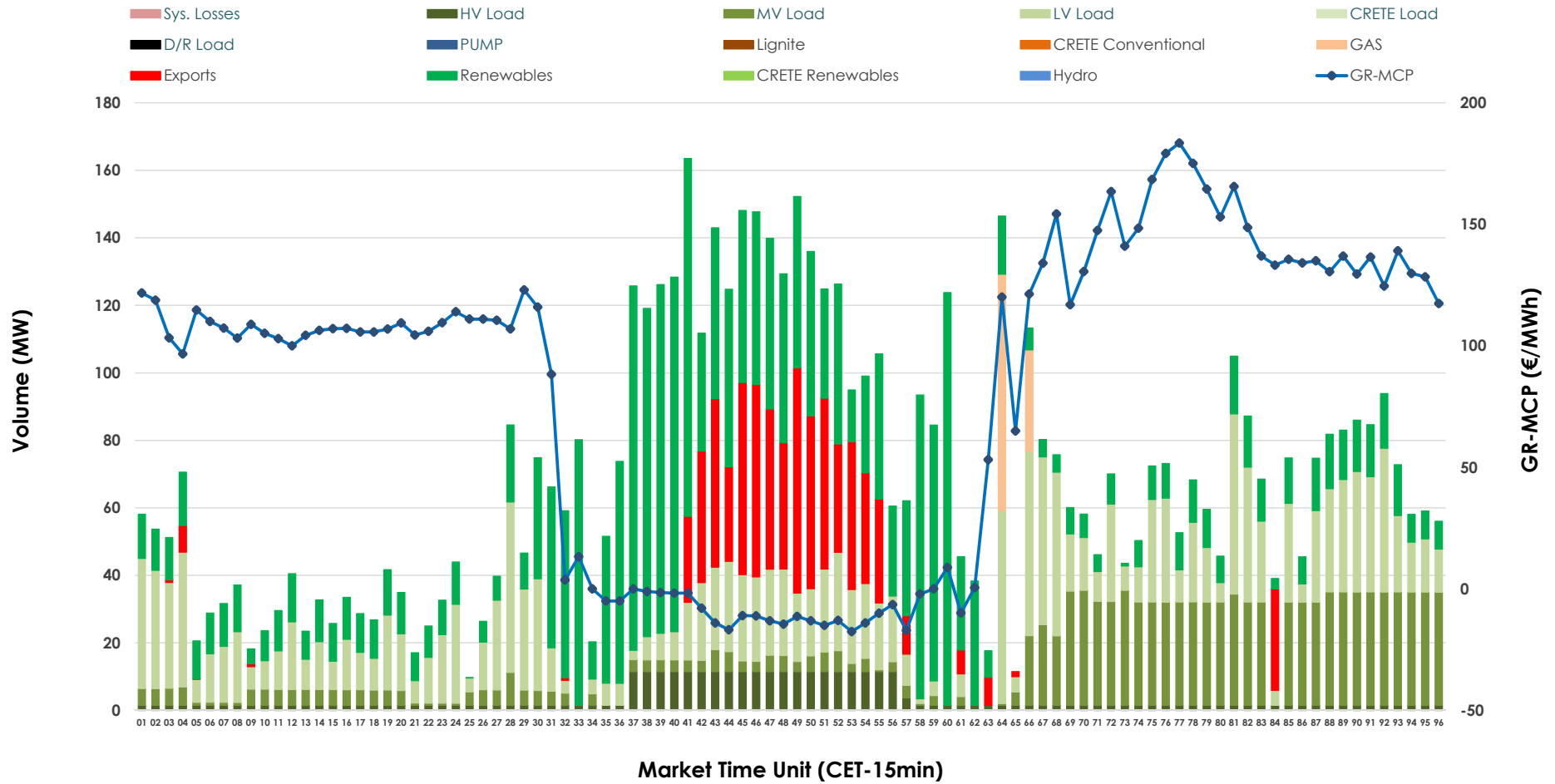


IDA '1' Market Outlook

14.03.2026 IDA '1' Market - Sell



14.03.2026 IDA '1' Market - Buy



GR Bidding Zone Weekly Figures

Delivery Day	08.03	09.03	10.03	11.03	12.03	13.03	14.03
	➔ 0%	➔ 0%	↔ 2%	↔ 16%	↔ 18%	↘ -28%	↔ 4%
Avg.MCP (€/MWh)	77.99	78.31	79.81	92.43	109.46	78.36	81.45
Max.MCP (€/MWh)	163.76	251.15	250.86	243.25	257.52	206.44	183.47
Min.MCP (€/MWh)	-15.11	-15.00	-14.90	-6.99	-9.65	-24.30	-17.57
	↘ -14%	↗ 45%	↔ 31%	↘ -46%	↗ 79%	↔ 14%	↘ -36%
Tot.Vol(GWh)	2.53	3.68	4.82	2.58	4.61	5.27	3.37

Trades by Order Type

Delivery Day		08.03	09.03	10.03	11.03	12.03	13.03	14.03	
Ord Price Type		Sell & Buy Trades in (GWh) per Price Type							(%)
PPT	(S)	0.000	0.000	0.000	0.000	0.000	0.000	0.000	0.00%
HBD	(S)	0.957	1.689	2.271	1.087	1.942	2.606	1.018	60.49%
BLK	(S)	0.000	0.000	0.000	0.000	0.000	0.000	0.000	0.00%
CPL	(S)	0.307	0.149	0.140	0.203	0.361	0.029	0.665	39.51%
PPT	(B)	0.000	0.000	0.000	0.000	0.000	0.000	0.000	0.00%
HBD	(B)	1.173	1.678	2.365	1.124	2.233	1.733	1.503	89.33%
BLK	(B)	0.000	0.000	0.000	0.000	0.000	0.000	0.000	0.00%
CPL	(B)	0.090	0.160	0.046	0.166	0.070	0.902	0.180	10.67%
		Sell & Buy Orders Traded per Price Type							(%)
PPT	(S)	0	0	0	0	0	0	0	0.00%
HBD	(S)	64	89	435	222	286	300	327	100.00%
BLK	(S)	0	0	0	0	0	0	0	0.00%
PPT	(B)	0	0	0	0	0	0	0	0.00%
HBD	(B)	840	840	1017	922	927	1203	882	100.00%
BLK	(B)	0	0	0	0	0	0	0	0.00%

- MCP** Market Clearing Price (€/MWh)
- PPT** Priority Price-Taking
- HBD** Hybrid
- BLK** Block
- CPL** Market Coupling Flow

Trade's Volume Mix

		Sell - MWh		Buy - MWh	
Lignite	(0.0%)	0	0	0	(0.0%)
Crete Conv.	(0.0%)	0	0	0	(0.0%)
Gas	(4.3%)	72	25	0	(1.5%)
Hydro	(0.0%)	1	0	0	(0.0%)
Imports	(39.5%)	665	0	0	(0.0%)
RES	(39.5%)	665	634	0	(37.7%)
Crete RES	(0.0%)	0	0	0	(0.0%)
HV Load	(2.7%)	46	87	0	(5.1%)
MV Load	(0.8%)	14	287	0	(17.1%)
LV Load	(9.5%)	161	470	0	(28.0%)
Crete Load	(0.0%)	0	0	0	(0.0%)
Pumping	(3.6%)	60	0	0	(0.0%)
Exports		0	180	0	(10.7%)
Sys.Losses	(0.0%)	0	0	0	(0.0%)
D/R Load	(0.0%)	0	0	0	(0.0%)

