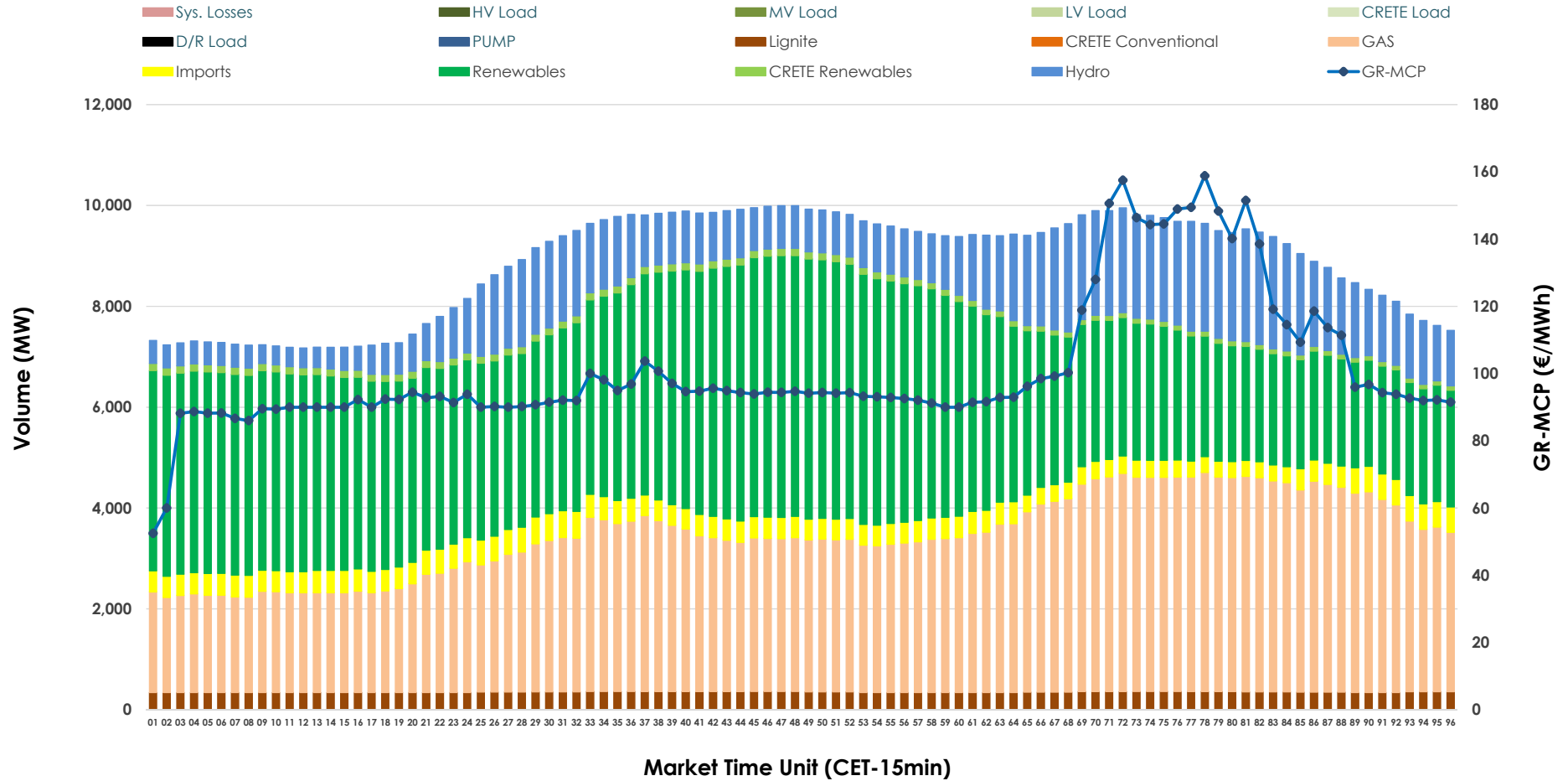


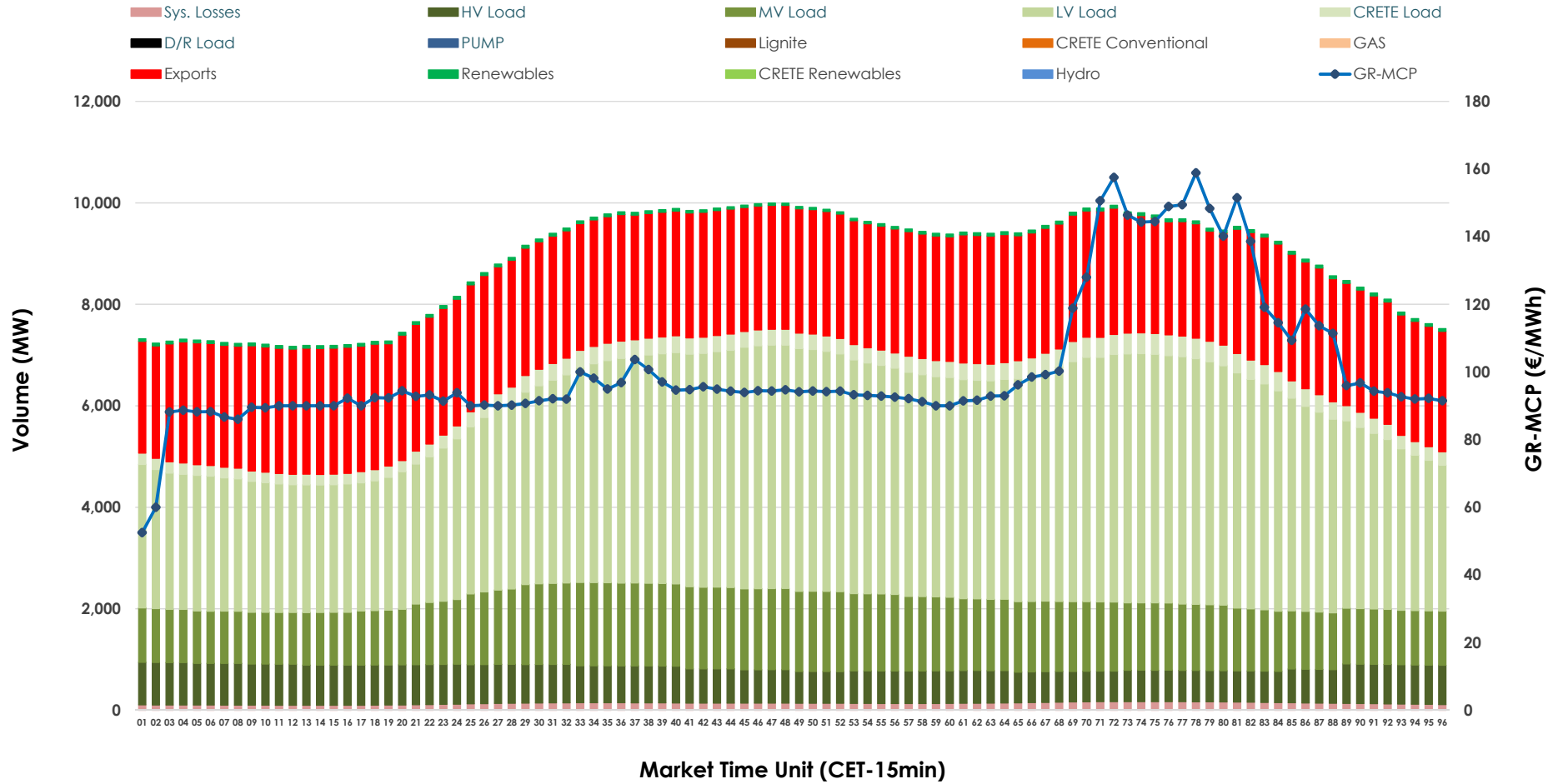


Day-Ahead Market Outlook

05.02.2026 Day-Ahead Market - Sell



05.02.2026 Day-Ahead Market - Buy



GR Bidding Zone Weekly Figures

Delivery Day	30.01	31.01	01.02	02.02	03.02	04.02	05.02
	➔ 1%	↗ 8%	↘ -4%	↗ 20%	➔ 0%	↘ -18%	➔ 1%
Avg.MCP (€/MWh)	97.48	105.72	101.14	121.82	121.82	100.27	101.12
Max.MCP (€/MWh)	162.33	155.04	134.83	246.62	216.88	137.73	158.84
Min.MCP (€/MWh)	32.69	47.50	60.00	89.15	77.88	0.01	52.50
	↘ -4%	↘ -5%	↘ -2%	↗ 12%	↘ -2%	➔ 0%	➔ 1%
Tot.Vol(GWh)	410.83	391.47	383.04	429.13	420.24	422.19	425.83

Trades by Order Type

Delivery Day		30.01	31.01	01.02	02.02	03.02	04.02	05.02	
Ord Price Type		Sell & Buy Trades in (GWh) per Price Type							(%)
PPT	(S)	94.378	86.154	93.785	94.401	86.646	99.050	100.032	46.98%
HBD	(S)	77.379	63.490	61.041	73.737	71.789	71.845	75.250	35.34%
BLK	(S)	33.660	46.080	34.935	44.589	48.842	40.198	37.633	17.68%
CPL	(S)	0.000	0.010	1.760	1.837	2.844	0.000	0.000	0.00%
PPT	(B)	14.582	13.273	12.883	14.412	14.445	13.914	13.913	6.53%
HBD	(B)	149.993	144.217	139.193	157.240	156.715	151.872	152.005	71.39%
BLK	(B)	0.000	0.000	0.000	0.000	0.000	0.000	0.000	0.00%
CPL	(B)	40.843	38.244	39.446	42.912	38.961	45.307	46.997	22.07%
		Sell & Buy Orders Traded per Price Type							(%)
PPT	(S)	2166	2238	2123	2177	2232	2251	2154	43.29%
HBD	(S)	2758	2948	2632	2732	2988	2798	2809	56.45%
BLK	(S)	15	17	18	19	15	15	13	0.26%
PPT	(B)	2272	2230	2337	2229	2216	2234	2227	36.46%
HBD	(B)	4044	3974	3890	3882	3884	3985	3881	63.54%
BLK	(B)	0	0	0	0	0	0	0	0.00%

MCP Market Clearing Price (€/MWh)
PPT Priority Price-Taking
HBD Hybrid
BLK Block
CPL Market Coupling Flow

Trade's Volume Mix

		Sell - MWh	Buy - MWh	
Lignite	(3.9%)	8,389	0	(0.0%)
Crete Conv.	(0.0%)	0	0	(0.0%)
Gas	(35.2%)	75,008	0	(0.0%)
Hydro	(14.0%)	29,802	0	(0.0%)
Imports	(4.7%)	10,112		
RES	(40.7%)	86,669	1,267	(0.6%)
Crete RES	(1.4%)	2,935	0	(0.0%)
HV Load	(0.0%)	0	16,983	(8.0%)
MV Load	(0.0%)	0	31,842	(15.0%)
LV Load	(0.0%)	0	93,686	(44.0%)
Crete Load	(0.0%)	0	7,361	(3.5%)
Pumping	(0.0%)	0	0	(0.0%)
Exports			58,552	(27.5%)
Sys.Losses	(0.0%)	0	3,224	(1.5%)
D/R Load	(0.0%)	0	0	(0.0%)

