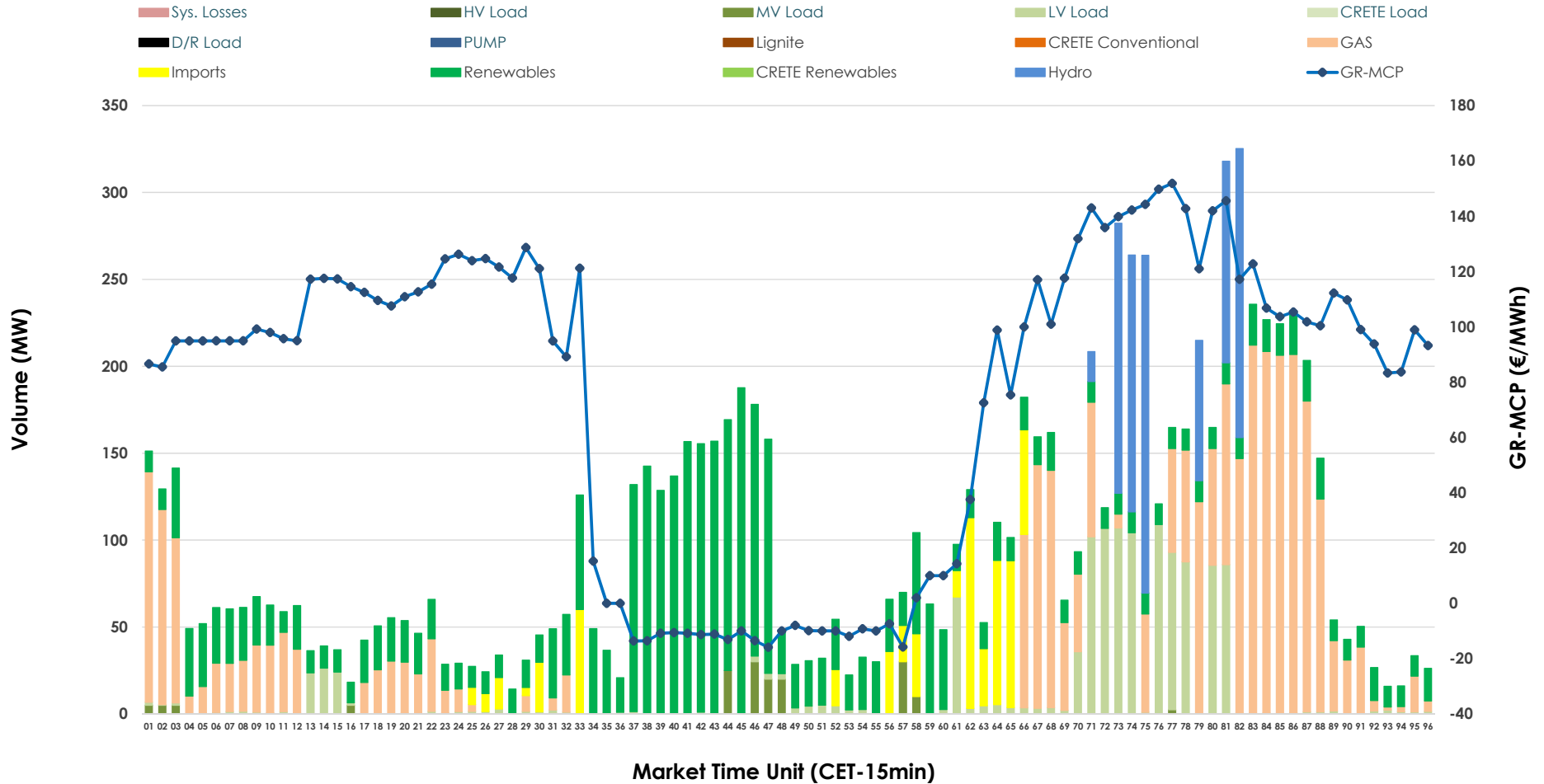


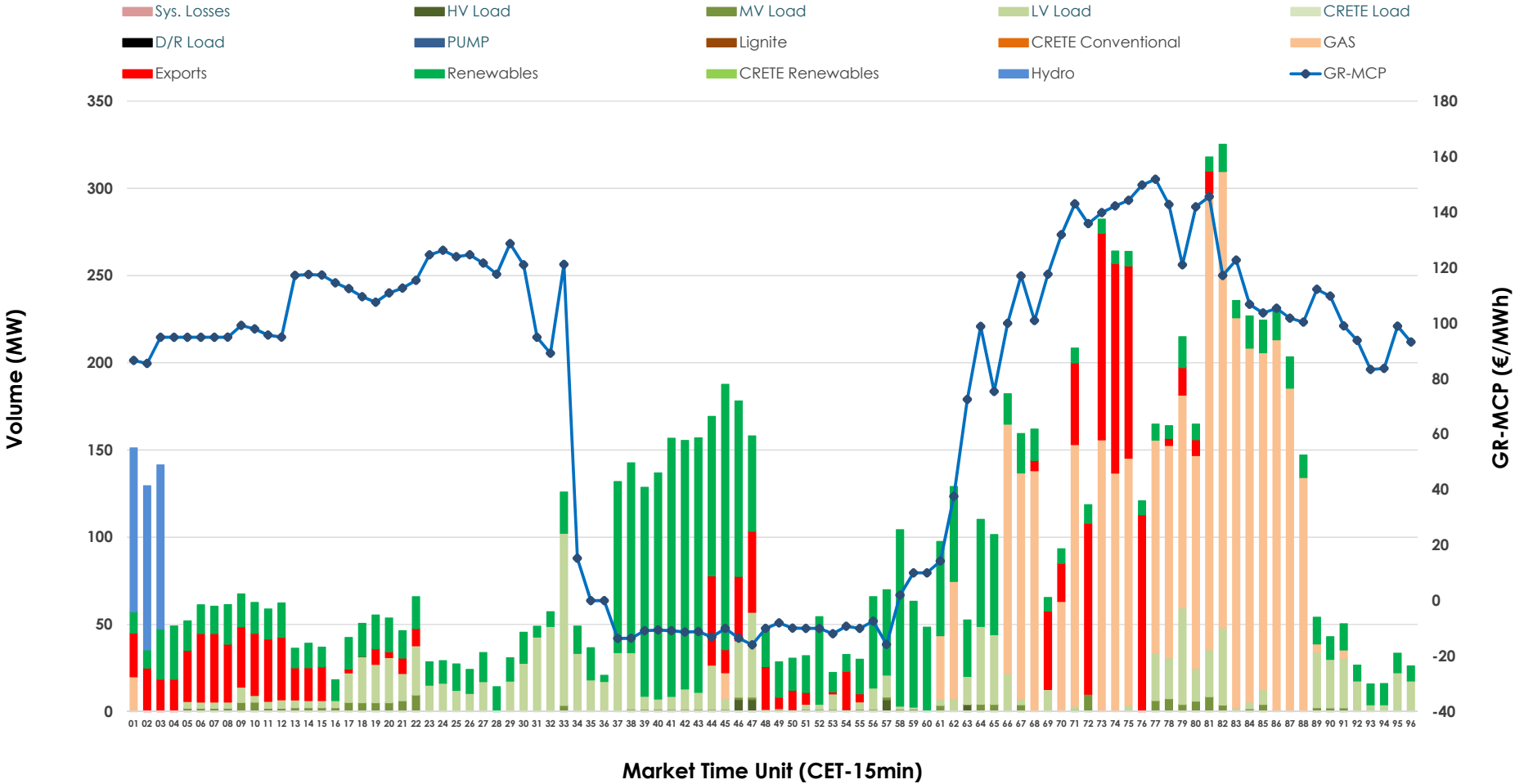


IDA '2' Market Outlook

08.03.2026 IDA '2' Market - Sell



08.03.2026 IDA '2' Market - Buy



GR Bidding Zone Weekly Figures

Delivery Day	02.03	03.03	04.03	05.03	06.03	07.03	08.03
	↑ 130%	↑ 35%	↓ -13%	↔ 3%	↓ -18%	↔ 1%	↓ -5%
Avg.MCP (€/MWh)	80.72	109.02	94.68	97.40	79.46	80.40	76.18
Max.MCP (€/MWh)	256.35	254.11	263.83	207.30	210.88	165.43	151.84
Min.MCP (€/MWh)	-29.06	9.57	-7.85	4.08	-22.00	-20.95	-15.92
	↔ 6%	↓ -2%	↓ -25%	↓ -13%	↔ 28%	↑ 42%	↓ -9%
Tot.Vol(GWh)	4.50	4.41	3.33	2.89	3.70	5.27	4.80

Trades by Order Type

Delivery Day		02.03	03.03	04.03	05.03	06.03	07.03	08.03	
Ord Price Type		Sell & Buy Trades in (GWh) per Price Type							(%)
PPT	(S)	0.000	0.000	0.000	0.000	0.000	0.000	0.000	0.00%
HBD	(S)	1.551	1.052	1.325	0.976	1.168	2.449	2.243	93.44%
BLK	(S)	0.000	0.000	0.000	0.000	0.000	0.000	0.000	0.00%
CPL	(S)	0.697	1.155	0.338	0.469	0.684	0.188	0.158	6.56%
PPT	(B)	0.000	0.000	0.000	0.000	0.000	0.000	0.000	0.00%
HBD	(B)	1.866	1.971	1.525	1.145	1.085	2.455	2.050	85.39%
BLK	(B)	0.000	0.000	0.000	0.000	0.000	0.000	0.000	0.00%
CPL	(B)	0.383	0.236	0.138	0.301	0.766	0.181	0.351	14.61%
		Sell & Buy Orders Traded per Price Type							(%)
PPT	(S)	0	0	0	0	0	0	0	0.00%
HBD	(S)	221	261	137	267	332	177	400	100.00%
BLK	(S)	0	0	0	0	0	0	0	0.00%
PPT	(B)	0	0	0	0	0	0	0	0.00%
HBD	(B)	480	630	486	450	501	607	554	100.00%
BLK	(B)	0	0	0	0	0	0	0	0.00%

MCP Market Clearing Price (€/MWh)
PPT Priority Price-Taking
HBD Hybrid
BLK Block
CPL Market Coupling Flow

Trade's Volume Mix

	Sell - MWh	Buy - MWh	
Lignite (0.0%)	0	0	(0.0%)
Crete Conv. (0.0%)	0	0	(0.0%)
Gas (34.4%)	825	842	(35.1%)
Hydro (9.1%)	219	71	(2.9%)
Imports (6.6%)	158		
RES (36.1%)	866	748	(31.2%)
Crete RES (0.0%)	0	0	(0.0%)
HV Load (0.0%)	0	6	(0.3%)
MV Load (1.6%)	40	45	(1.9%)
LV Load (12.2%)	293	338	(14.1%)
Crete Load (0.0%)	0	0	(0.0%)
Pumping (0.0%)	0	0	(0.0%)
Exports		351	(14.6%)
Sys.Losses (0.0%)	0	0	(0.0%)
D/R Load (0.0%)	0	0	(0.0%)

