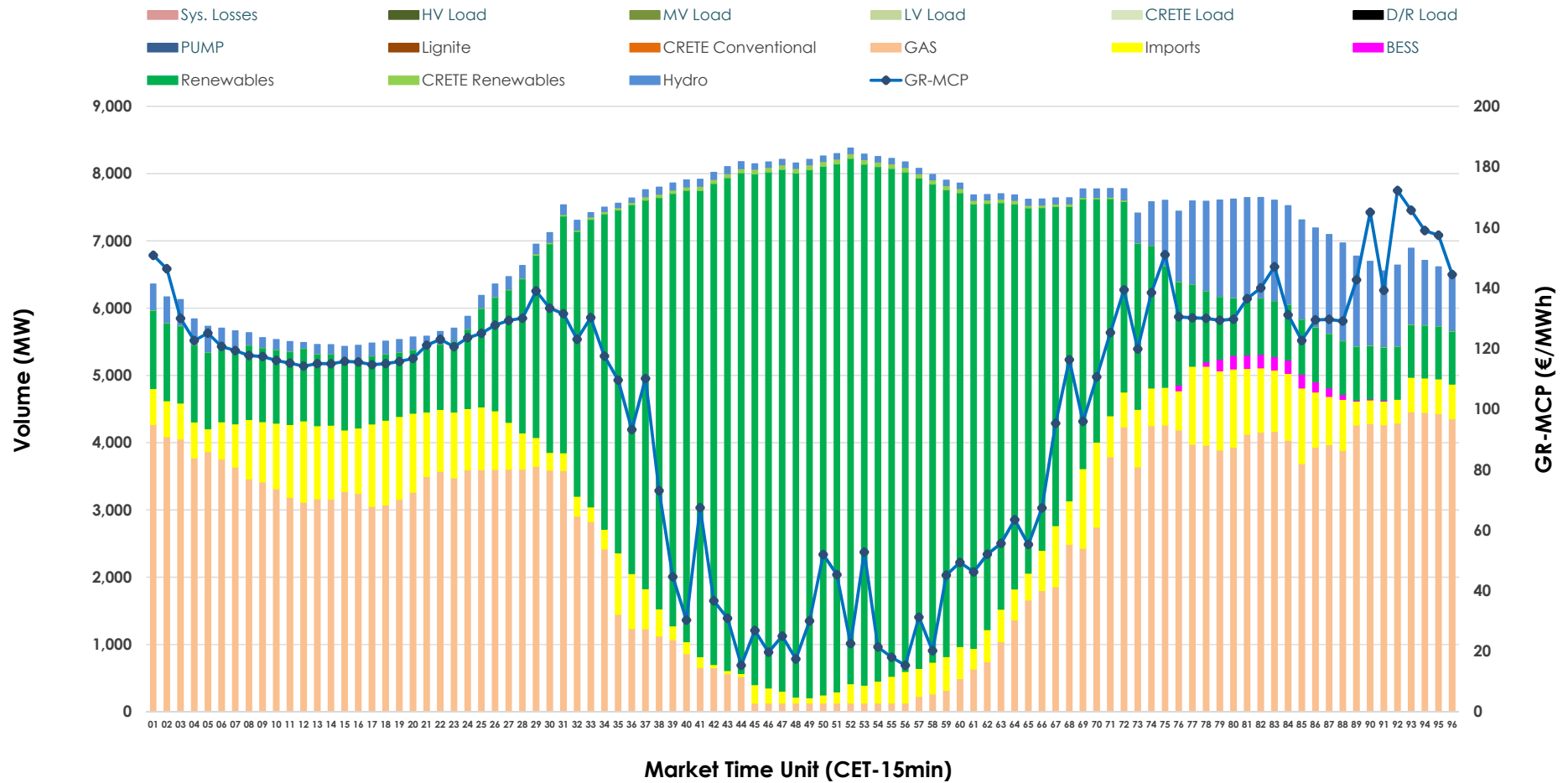


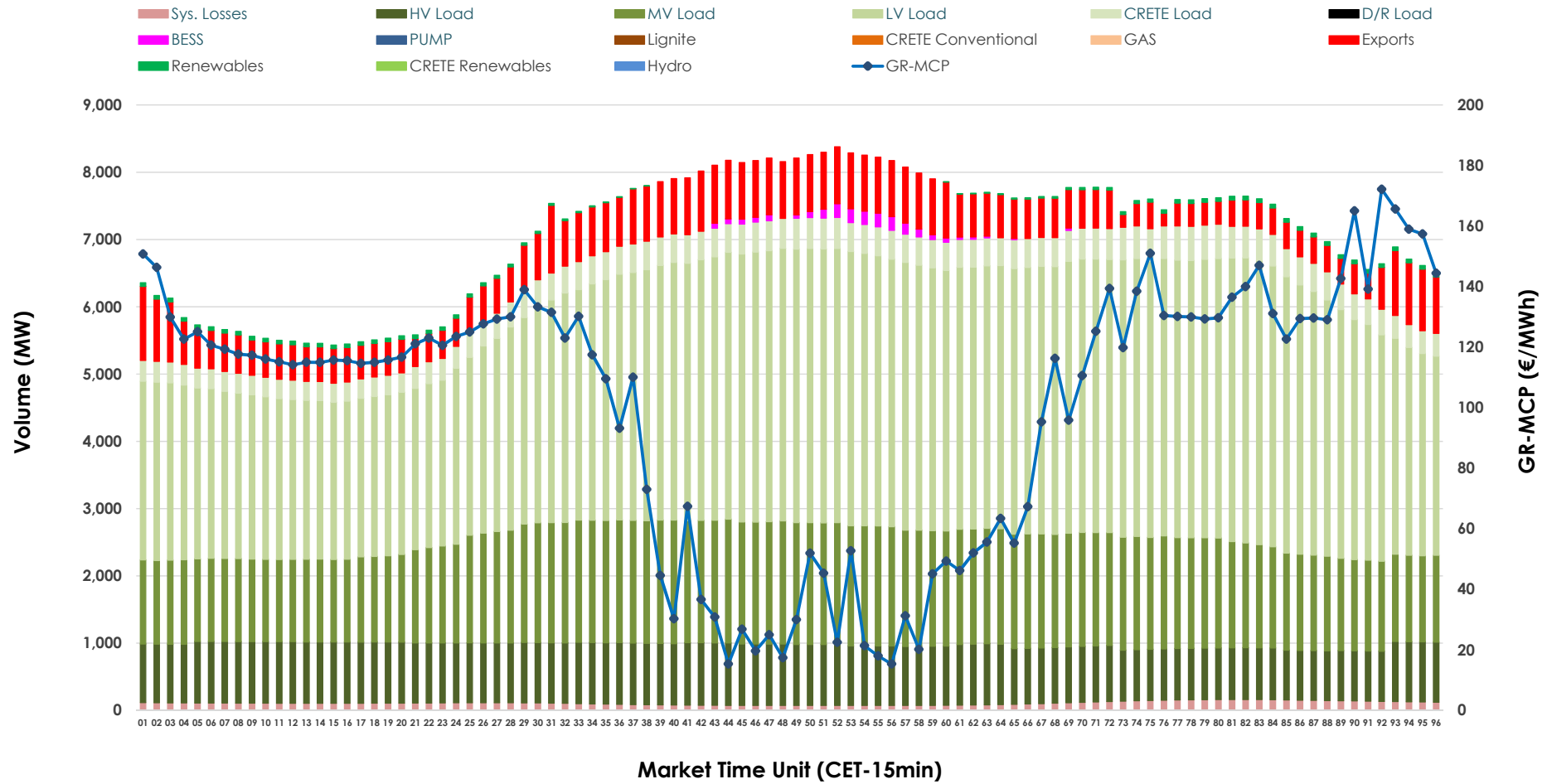


# Day-Ahead Market Outlook

16.06.2026 Day-Ahead Market - Sell



### 16.06.2026 Day-Ahead Market - Buy



### GR Bidding Zone Weekly Figures

Delivery Day	10.06	11.06	12.06	13.06	14.06	15.06	16.06
	👇 -9%	👇 -3%	👆 16%	👇 -57%	👆 20%	👆 45%	👆 16%
<b>Avg.MCP (€/MWh)</b>	104.15	100.74	116.43	49.69	59.78	86.75	100.92
<b>Max.MCP (€/MWh)</b>	200.90	167.58	171.46	169.10	175.01	180.14	172.17
<b>Min.MCP (€/MWh)</b>	-0.01	15.37	60.59	-34.00	-10.00	0.00	15.33
	👇 -2%	👇 -2%	👇 -4%	👇 -11%	👇 -10%	👆 24%	👆 2%
<b>Tot.Vol(GWh)</b>	354.80	348.94	333.52	297.06	268.05	331.94	339.97

### Trades by Order Type

Delivery Day		10.06	11.06	12.06	13.06	14.06	15.06	16.06	
<b>Ord Price Type</b>		<b>Sell &amp; Buy Trades in (GWh) per Price Type</b>							<b>(%)</b>
<b>PPT</b>	(S)	61.558	57.801	57.093	68.037	56.168	56.785	55.273	32.52%
<b>HBD</b>	(S)	77.318	74.310	63.660	57.846	50.363	71.647	71.874	42.28%
<b>BLK</b>	(S)	37.882	36.463	32.591	14.016	16.742	27.719	33.076	19.46%
<b>CPL</b>	(S)	0.639	5.898	13.414	8.628	10.751	9.821	9.764	5.74%
<b>PPT</b>	(B)	16.475	16.757	16.583	16.499	15.914	16.480	16.485	9.70%
<b>HBD</b>	(B)	145.565	147.692	144.354	123.659	113.815	134.034	146.696	86.30%
<b>BLK</b>	(B)	0.000	0.000	0.000	0.000	0.000	0.000	0.000	0.00%
<b>CPL</b>	(B)	15.358	10.022	5.821	8.370	4.295	15.459	6.806	4.00%
		<b>Sell &amp; Buy Orders Traded per Price Type</b>							<b>(%)</b>
<b>PPT</b>	(S)	1649	1662	1672	1583	1528	1498	1584	29.89%
<b>HBD</b>	(S)	3651	3597	3357	2561	2705	3465	3701	69.84%
<b>BLK</b>	(S)	17	15	16	8	13	14	14	0.26%
<b>PPT</b>	(B)	2333	2348	2344	2406	2364	2351	2347	38.07%
<b>HBD</b>	(B)	4000	3995	3843	4001	3902	3805	3818	61.93%
<b>BLK</b>	(B)	0	0	0	0	0	0	0	0.00%

- MCP** Market Clearing Price (€/MWh)
- PPT** Priority Price-Taking
- HBD** Hybrid
- BLK** Block
- CPL** Market Coupling Flow

### Trade's Volume Mix

	Sell - MWh	Buy - MWh	
<b>Lignite</b> (0.0%)	0	0	(0.0%)
<b>Crete Conv.</b> (0.0%)	0	0	(0.0%)
<b>Gas</b> (37.2%)	63,197	0	(0.0%)
<b>Hydro</b> (5.7%)	9,765	0	(0.0%)
<b>Imports</b> (8.9%)	15,076		
<b>RES</b> (47.5%)	80,802	787	(0.5%)
<b>Crete RES</b> (0.4%)	666	0	(0.0%)
<b>BESS</b> (0.3%)	481	557	(0.3%)
<b>HV Load</b> (0.0%)	0	20,780	(12.2%)
<b>MV Load</b> (0.0%)	0	37,708	(22.2%)
<b>LV Load</b> (0.0%)	0	83,014	(48.8%)
<b>Crete Load</b> (0.0%)	0	9,494	(5.6%)
<b>Pumping</b> (0.0%)	0	0	(0.0%)
<b>Exports</b>		15,035	(8.8%)
<b>Sys.Losses</b> (0.0%)	0	2,612	(1.5%)
<b>D/R Load</b> (0.0%)	0	0	(0.0%)

