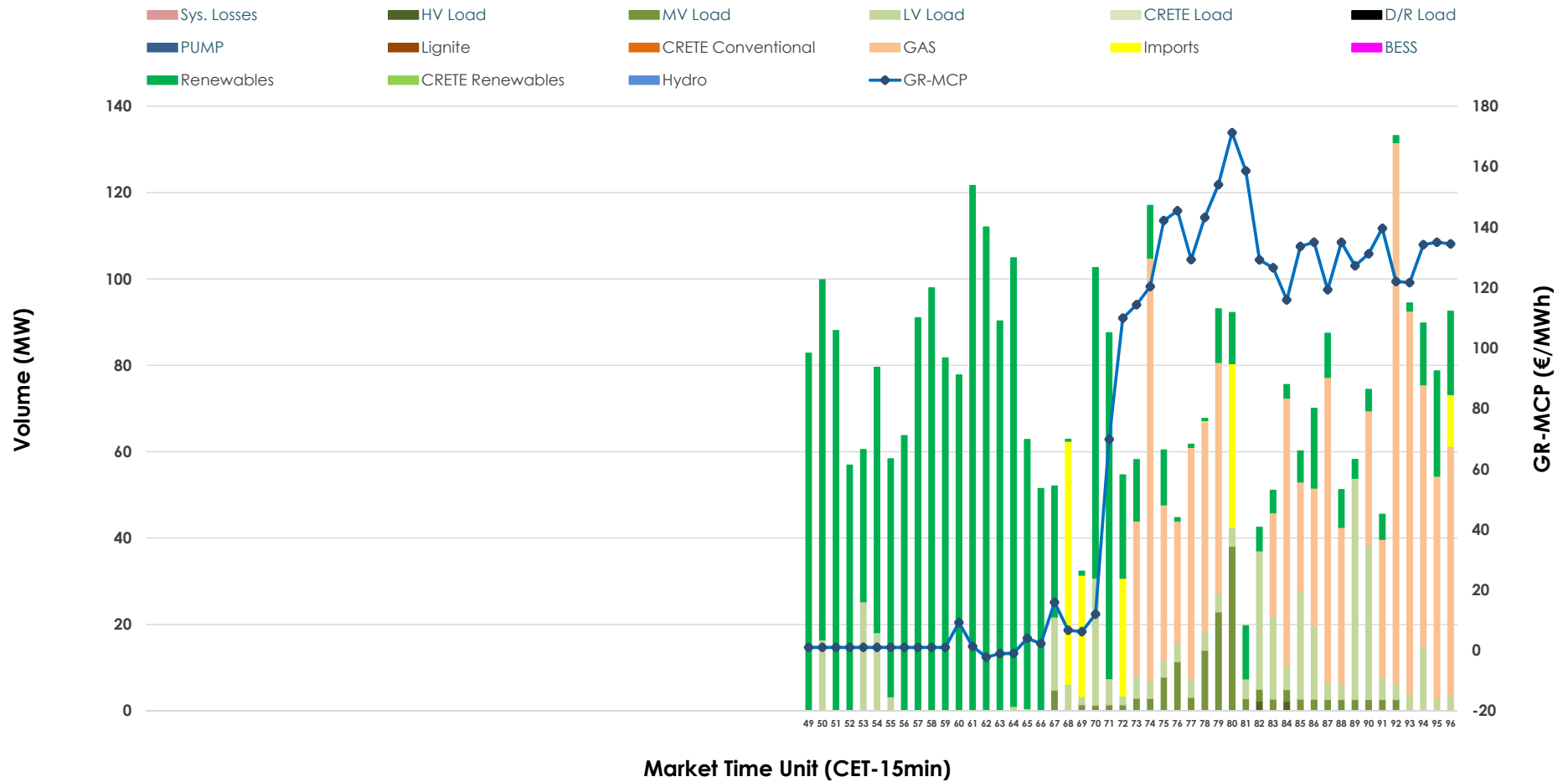


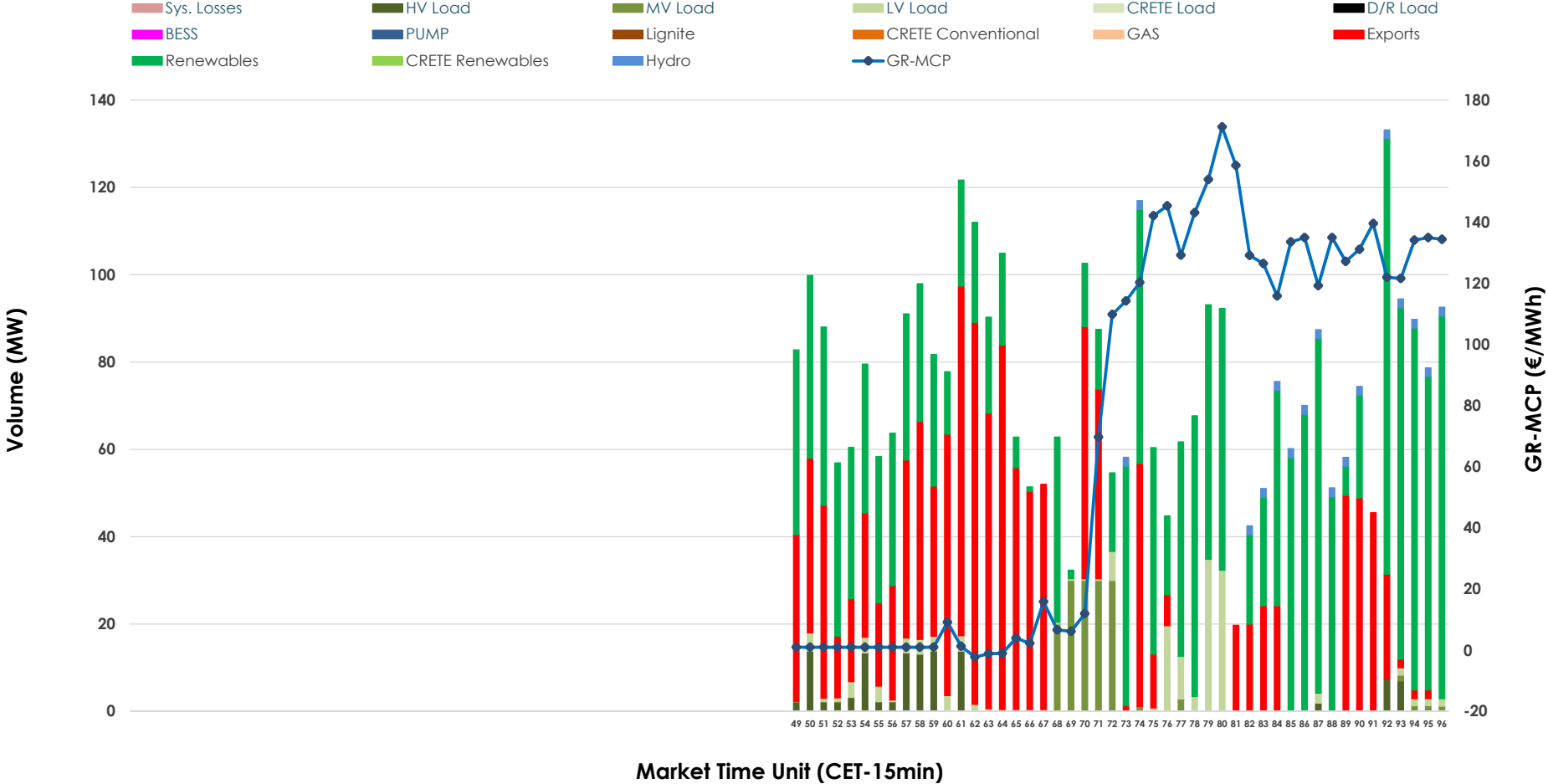


# IDA '3' Market Outlook

23.05.2026 IDA '3' Market - Sell



### 23.05.2026 IDA '3' Market - Buy



### GR Bidding Zone Weekly Figures

Delivery Day	17.05	18.05	19.05	20.05	21.05	22.05	23.05
	↗ 3%	↕ 63%	↗ 12%	↘ -36%	↗ 32%	↘ -22%	↘ -16%
<b>Avg.MCP (€/MWh)</b>	71.12	115.83	129.53	83.15	110.01	85.80	72.12
<b>Max.MCP (€/MWh)</b>	146.50	272.82	216.80	196.97	237.02	152.36	171.24
<b>Min.MCP (€/MWh)</b>	-15.83	-5.23	63.92	-4.78	3.90	11.39	-2.23
	↘ -48%	↕ 96%	↗ 26%	↘ -37%	↕ 196%	↘ -69%	↗ 10%
<b>Tot.Vol(GWh)</b>	1.14	2.23	2.81	1.78	5.28	1.63	1.80

### Trades by Order Type

Delivery Day		17.05	18.05	19.05	20.05	21.05	22.05	23.05	
<b>Ord Price Type</b>		<b>Sell &amp; Buy Trades in (GWh) per Price Type</b>							<b>(%)</b>
<b>PPT</b>	(S)	0.000	0.000	0.000	0.000	0.000	0.000	0.000	0.00%
<b>HBD</b>	(S)	0.304	0.670	0.893	0.836	2.108	0.789	0.858	95.49%
<b>BLK</b>	(S)	0.000	0.000	0.000	0.000	0.000	0.000	0.000	0.00%
<b>CPL</b>	(S)	0.266	0.446	0.511	0.055	0.530	0.026	0.040	4.51%
<b>PPT</b>	(B)	0.000	0.000	0.000	0.000	0.000	0.000	0.000	0.00%
<b>HBD</b>	(B)	0.446	1.071	1.185	0.635	2.179	0.478	0.566	63.00%
<b>BLK</b>	(B)	0.000	0.000	0.000	0.000	0.000	0.000	0.000	0.00%
<b>CPL</b>	(B)	0.124	0.046	0.219	0.256	0.459	0.337	0.332	37.00%
		<b>Sell &amp; Buy Orders Traded per Price Type</b>							<b>(%)</b>
<b>PPT</b>	(S)	0	0	0	0	0	0	0	0.00%
<b>HBD</b>	(S)	81	183	126	233	292	144	167	100.00%
<b>BLK</b>	(S)	0	0	0	0	0	0	0	0.00%
<b>PPT</b>	(B)	0	0	0	0	0	0	0	0.00%
<b>HBD</b>	(B)	163	307	388	163	194	188	171	100.00%
<b>BLK</b>	(B)	0	0	0	0	0	0	0	0.00%

- MCP** Market Clearing Price (€/MWh)
- PPT** Priority Price-Taking
- HBD** Hybrid
- BLK** Block
- CPL** Market Coupling Flow

### Trade's Volume Mix

	Sell - MWh	Buy - MWh	
<b>Lignite</b> (0.0%)	0	0	(0.0%)
<b>Crete Conv.</b> (0.0%)	0	0	(0.0%)
<b>Gas</b> (29.2%)	263	0	(0.0%)
<b>Hydro</b> (0.0%)	0	8	(0.9%)
<b>Imports</b> (4.5%)	40		
<b>RES</b> (51.1%)	459	453	(50.5%)
<b>Crete RES</b> (0.0%)	0	0	(0.0%)
<b>BESS</b> (0.0%)	0	0	(0.0%)
<b>HV Load</b> (0.1%)	1	28	(3.1%)
<b>MV Load</b> (4.0%)	36	37	(4.1%)
<b>LV Load</b> (11.0%)	98	39	(4.4%)
<b>Crete Load</b> (0.0%)	0	0	(0.0%)
<b>Pumping</b> (0.0%)	0	0	(0.0%)
<b>Exports</b>		332	(37.0%)
<b>Sys.Losses</b> (0.0%)	0	0	(0.0%)
<b>D/R Load</b> (0.0%)	0	0	(0.0%)

