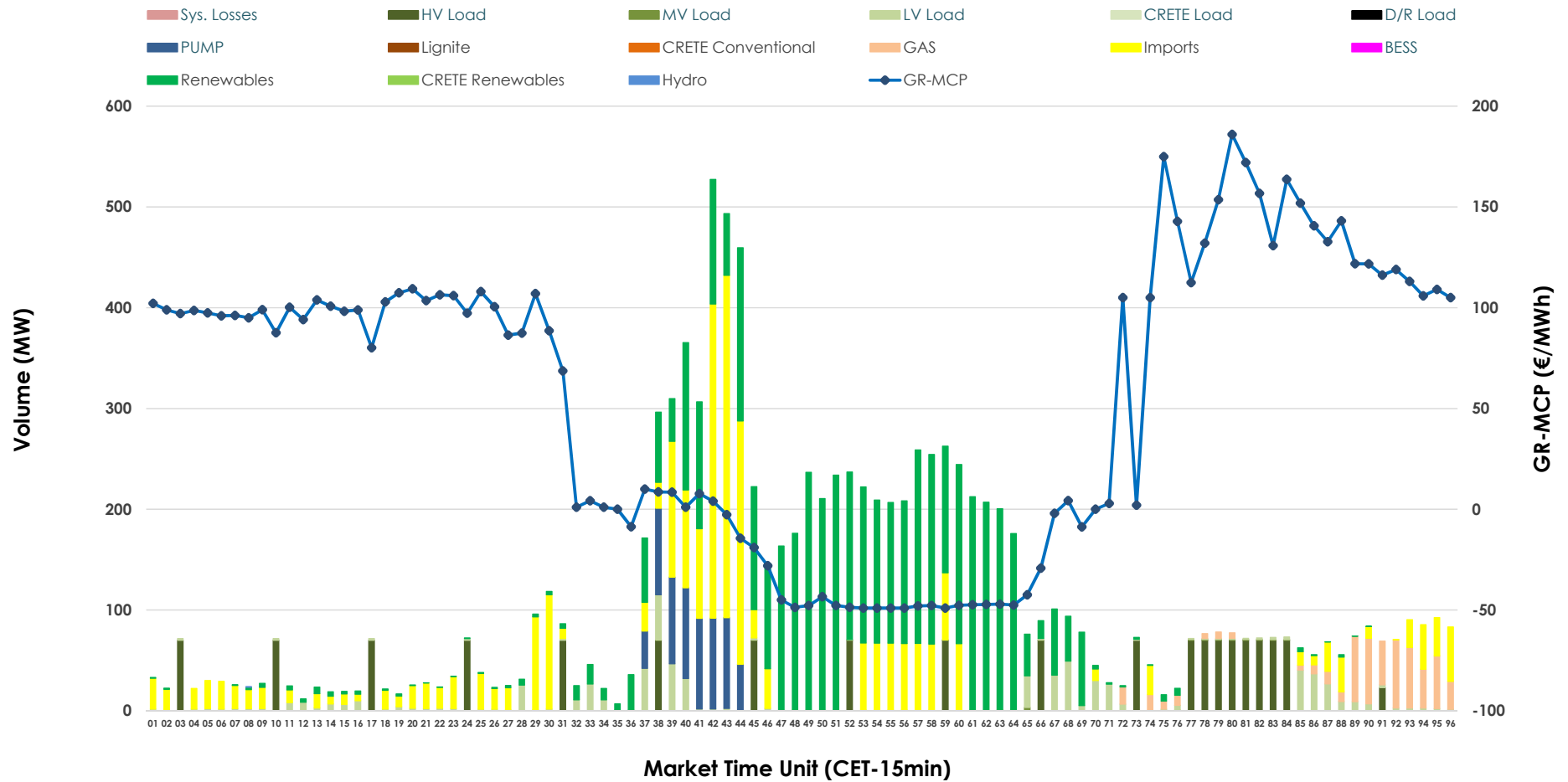


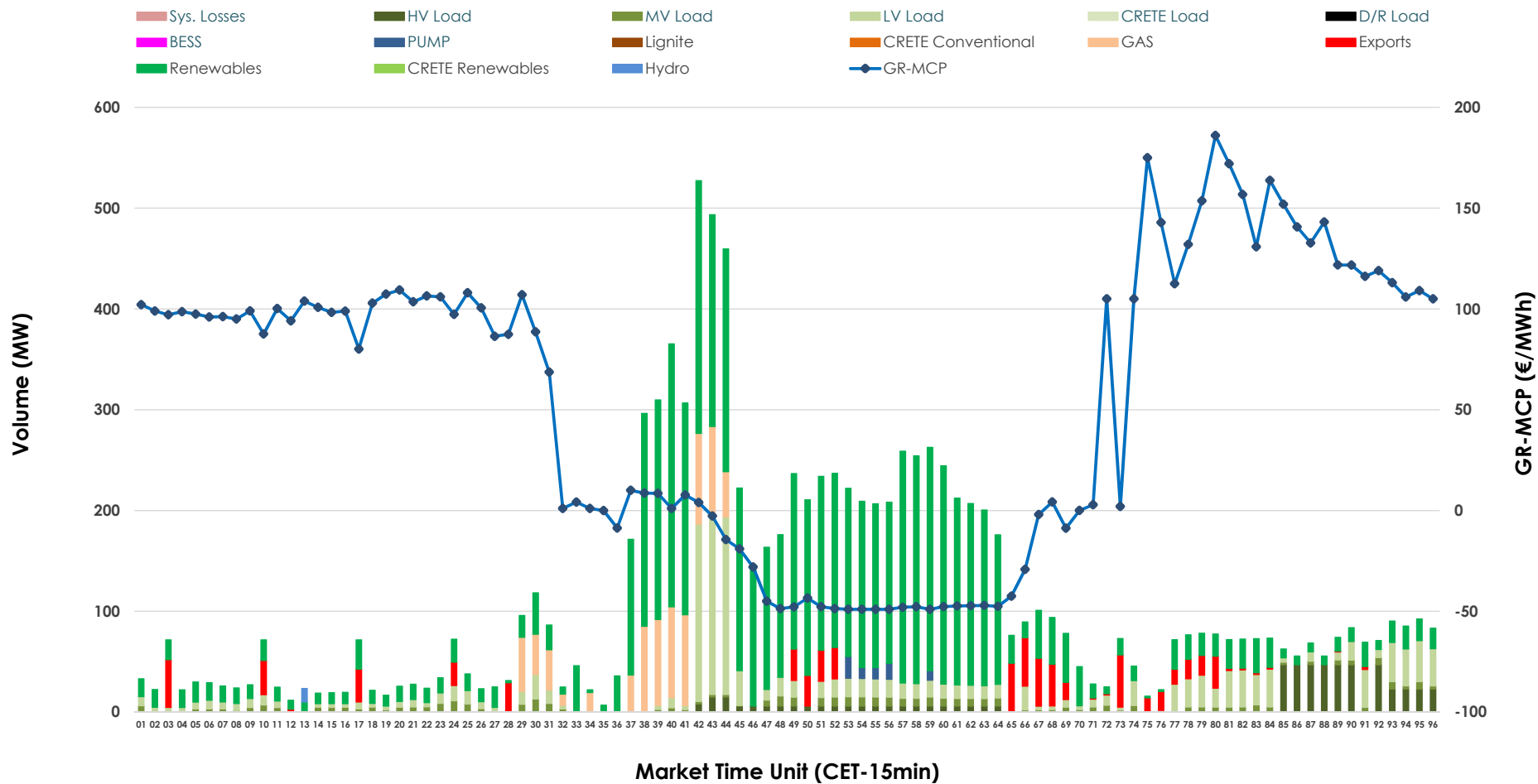


IDA '1' Market Outlook

25.04.2026 IDA '1' Market - Sell



25.04.2026 IDA '1' Market - Buy



GR Bidding Zone Weekly Figures

Delivery Day	19.04	20.04	21.04	22.04	23.04	24.04	25.04
	↗ 13%	↗ 15%	→ 1%	↑ 33%	↓ -52%	↑ 47%	↘ -30%
Avg.MCP (€/MWh)	72.08	82.77	83.33	111.24	53.67	78.96	55.00
Max.MCP (€/MWh)	174.32	179.47	171.83	292.39	203.10	230.91	186.00
Min.MCP (€/MWh)	-10.00	-1.99	-4.99	1.33	-35.01	-16.96	-49.00
	↘ -3%	↘ -55%	↑ 139%	↘ -17%	↑ 159%	↘ -56%	↑ 39%
Tot.Vol(GWh)	3.77	1.71	4.07	3.38	8.74	3.84	5.36

Trades by Order Type

Delivery Day		19.04	20.04	21.04	22.04	23.04	24.04	25.04	
Ord Price Type		Sell & Buy Trades in (GWh) per Price Type							(%)
PPT	(S)	0.000	0.000	0.000	0.000	0.000	0.000	0.000	0.00%
HBD	(S)	0.797	0.522	1.349	1.089	4.351	1.594	1.972	73.56%
BLK	(S)	0.000	0.000	0.000	0.000	0.000	0.000	0.000	0.00%
CPL	(S)	1.090	0.331	0.685	0.599	0.018	0.327	0.709	26.44%
PPT	(B)	0.000	0.000	0.000	0.000	0.000	0.000	0.000	0.00%
HBD	(B)	0.851	0.653	1.540	1.590	2.662	1.801	2.511	93.69%
BLK	(B)	0.000	0.000	0.000	0.000	0.000	0.000	0.000	0.00%
CPL	(B)	1.036	0.200	0.494	0.099	1.708	0.120	0.169	6.31%
		Sell & Buy Orders Traded per Price Type							(%)
PPT	(S)	0	0	0	0	0	0	0	0.00%
HBD	(S)	173	148	198	325	62	294	313	100.00%
BLK	(S)	0	0	0	0	0	0	0	0.00%
PPT	(B)	0	0	0	0	0	0	0	0.00%
HBD	(B)	512	538	606	883	1056	716	640	100.00%
BLK	(B)	0	0	0	0	0	0	0	0.00%

- MCP** Market Clearing Price (€/MWh)
- PPT** Priority Price-Taking
- HBD** Hybrid
- BLK** Block
- CPL** Market Coupling Flow

Trade's Volume Mix

	Sell - MWh	Buy - MWh	
Lignite (0.0%)	0	0	(0.0%)
Crete Conv. (0.0%)	0	0	(0.0%)
Gas (4.9%)	131	194	(7.2%)
Hydro (0.0%)	0	3	(0.1%)
Imports (26.4%)	709		
RES (43.7%)	1,171	1,636	(61.0%)
Crete RES (0.0%)	0	0	(0.0%)
BESS (0.0%)	0	0	(0.0%)
HV Load (12.6%)	338	145	(5.4%)
MV Load (0.2%)	4	105	(3.9%)
LV Load (6.5%)	173	411	(15.4%)
Crete Load (0.0%)	0	0	(0.0%)
Pumping (5.7%)	154	17	(0.6%)
Exports		169	(6.3%)
Sys.Losses (0.0%)	0	0	(0.0%)
D/R Load (0.0%)	0	0	(0.0%)

