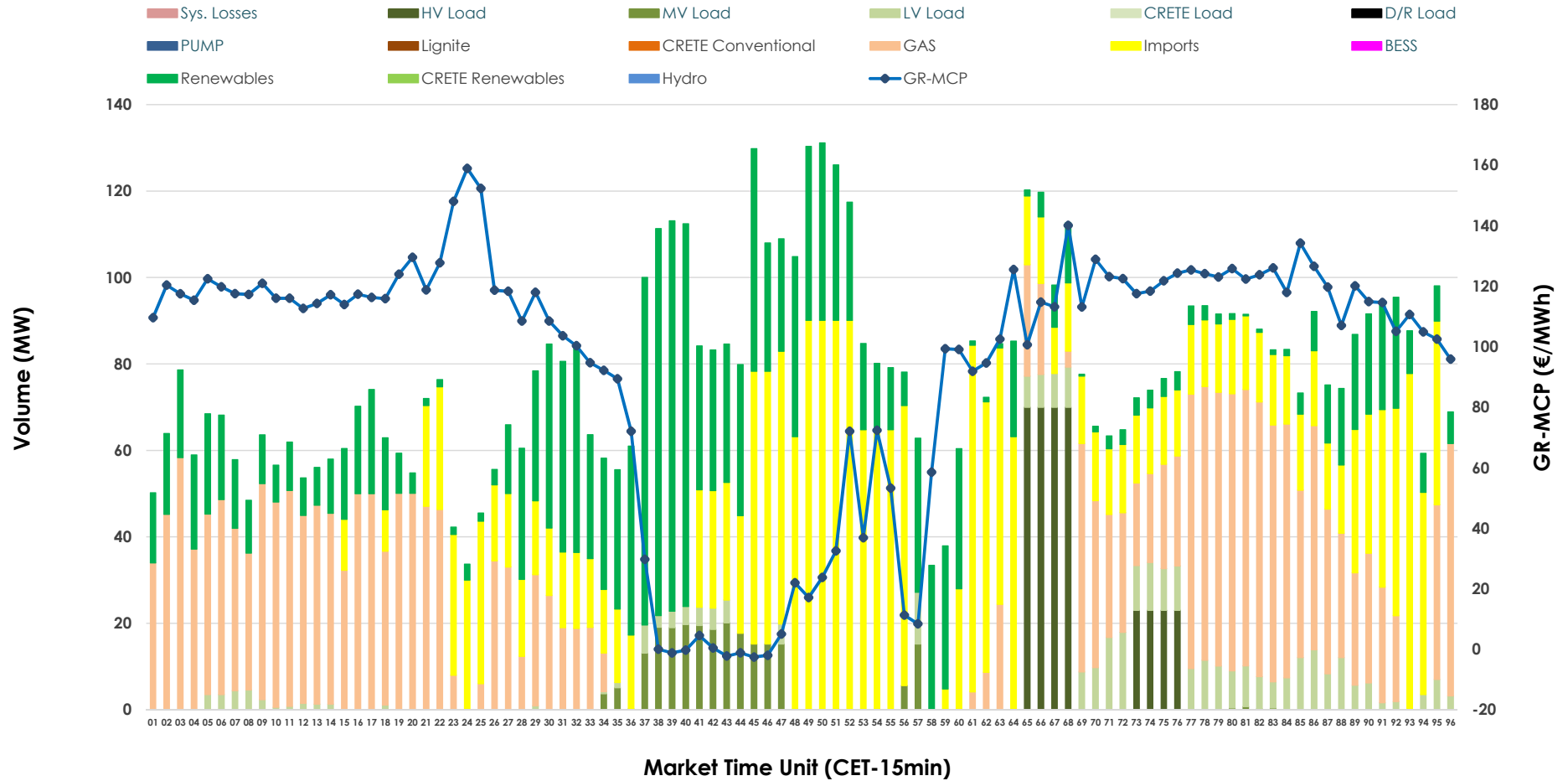


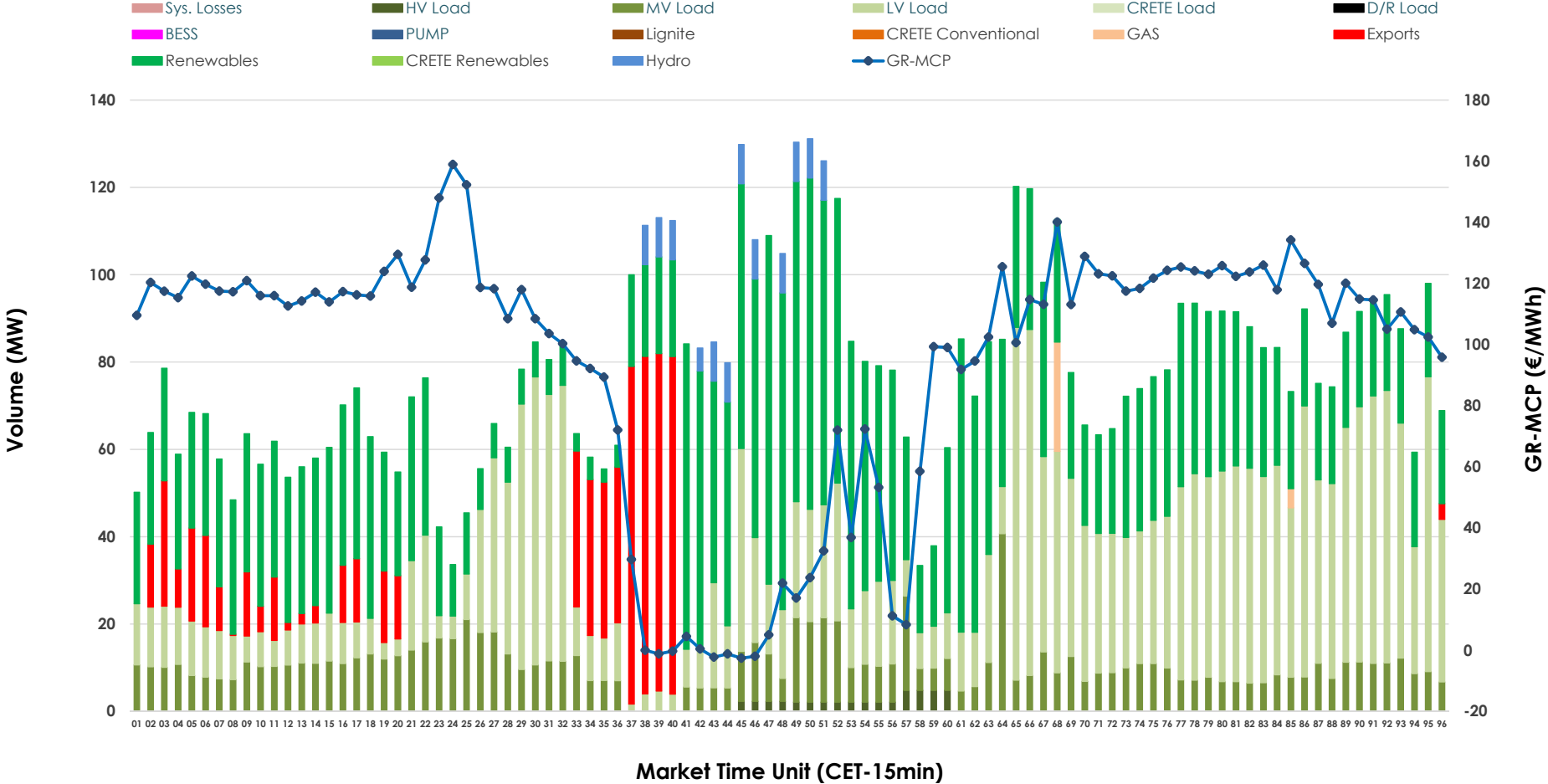


IDA '1' Market Outlook

27.03.2026 IDA '1' Market - Sell



27.03.2026 IDA '1' Market - Buy



GR Bidding Zone Weekly Figures

Delivery Day	21.03	22.03	23.03	24.03	25.03	26.03	27.03
	👇 -13%	👇 -10%	👆 76%	👇 -26%	👇 -29%	👆 7%	👆 14%
Avg.MCP (€/MWh)	93.13	83.38	146.60	108.40	77.08	82.14	93.92
Max.MCP (€/MWh)	167.26	192.93	279.92	206.78	206.42	175.68	158.93
Min.MCP (€/MWh)	-8.88	-11.08	62.90	9.41	-8.09	-5.14	-2.58
	👇 -49%			👇 -26%	👆 26%	👆 15%	👇 -14%
Tot.Vol(GWh)	3.90	N/M	4.08	3.04	3.82	4.41	3.77

Trades by Order Type

Delivery Day		21.03	22.03	23.03	24.03	25.03	26.03	27.03	
Ord Price Type		Sell & Buy Trades in (GWh) per Price Type							(%)
PPT	(S)	0.000	0.000	0.000	0.000	0.000	0.000	0.000	0.00%
HBD	(S)	1.854	0.000	1.492	1.145	1.727	2.119	1.303	69.05%
BLK	(S)	0.000	0.000	0.000	0.000	0.000	0.000	0.000	0.00%
CPL	(S)	0.097	0.000	0.546	0.374	0.185	0.084	0.584	30.95%
PPT	(B)	0.000	0.000	0.000	0.000	0.000	0.000	0.000	0.00%
HBD	(B)	1.790	0.000	1.585	1.063	1.606	1.166	1.722	91.24%
BLK	(B)	0.000	0.000	0.000	0.000	0.000	0.000	0.000	0.00%
CPL	(B)	0.161	0.000	0.453	0.455	0.305	1.037	0.165	8.76%
		Sell & Buy Orders Traded per Price Type							(%)
PPT	(S)	0	0	0	0	0	0	0	0.00%
HBD	(S)	102	208	219	267	234	203	261	100.00%
BLK	(S)	0	0	0	0	0	0	0	0.00%
PPT	(B)	0	0	0	0	0	0	0	0.00%
HBD	(B)	824	755	773	794	865	738	860	100.00%
BLK	(B)	0	0	0	0	0	0	0	0.00%

- MCP** Market Clearing Price (€/MWh)
- PPT** Priority Price-Taking
- HBD** Hybrid
- BLK** Block
- CPL** Market Coupling Flow

Trade's Volume Mix

		Sell - MWh	Buy - MWh	
Lignite	(0.0%)	0	0	(0.0%)
Crete Conv.	(0.0%)	0	0	(0.0%)
Gas	(31.4%)	593	7	(0.4%)
Hydro	(0.0%)	0	26	(1.4%)
Imports	(30.9%)	584		
RES	(25.1%)	474	776	(41.1%)
Crete RES	(0.0%)	0	0	(0.0%)
BESS	(0.0%)	0	0	(0.0%)
HV Load	(4.9%)	93	11	(0.6%)
MV Load	(3.0%)	56	246	(13.0%)
LV Load	(4.6%)	87	656	(34.7%)
Crete Load	(0.0%)	0	0	(0.0%)
Pumping	(0.0%)	0	0	(0.0%)
Exports			165	(8.8%)
Sys.Losses	(0.0%)	0	0	(0.0%)
D/R Load	(0.0%)	0	0	(0.0%)

