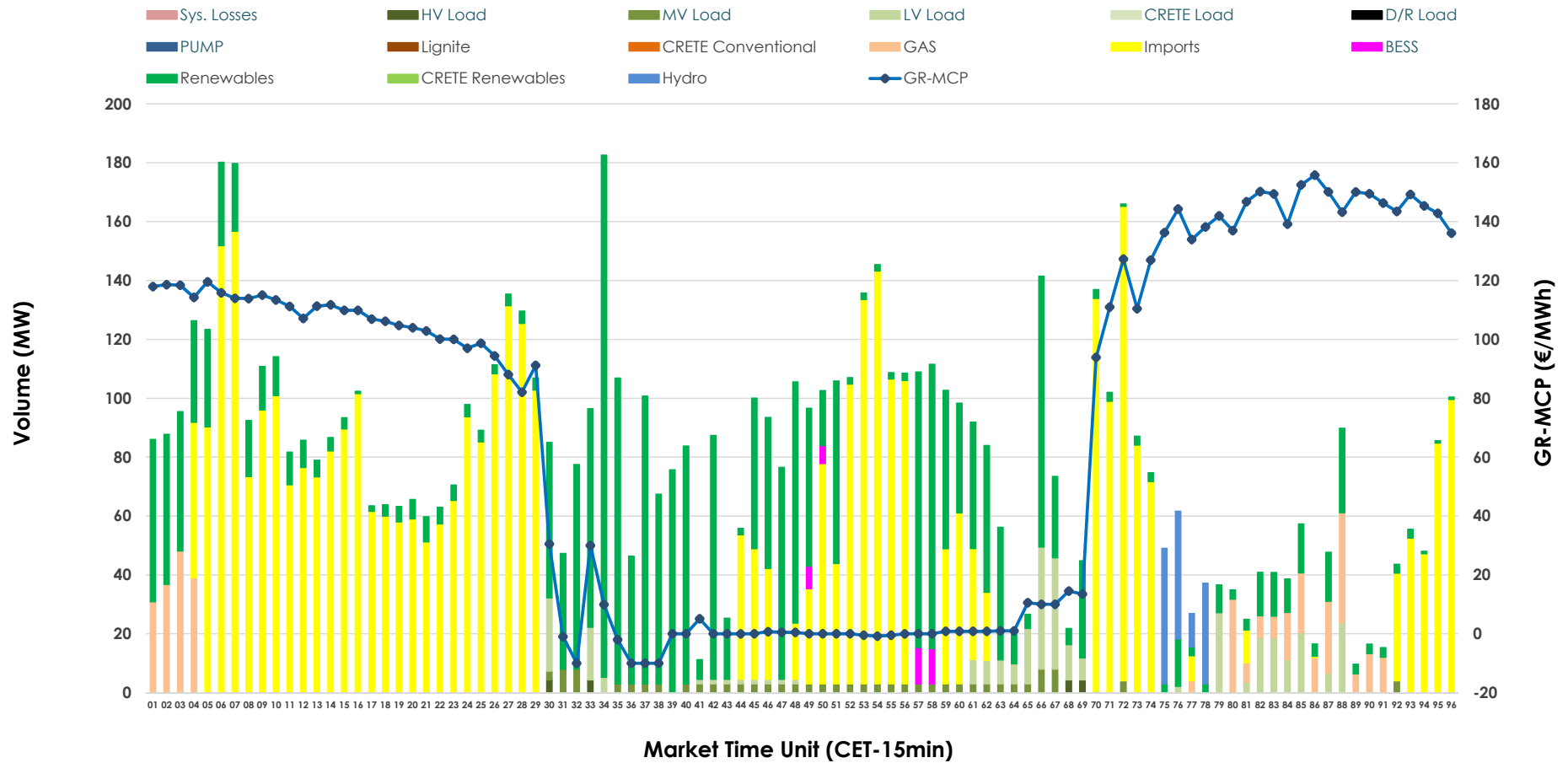


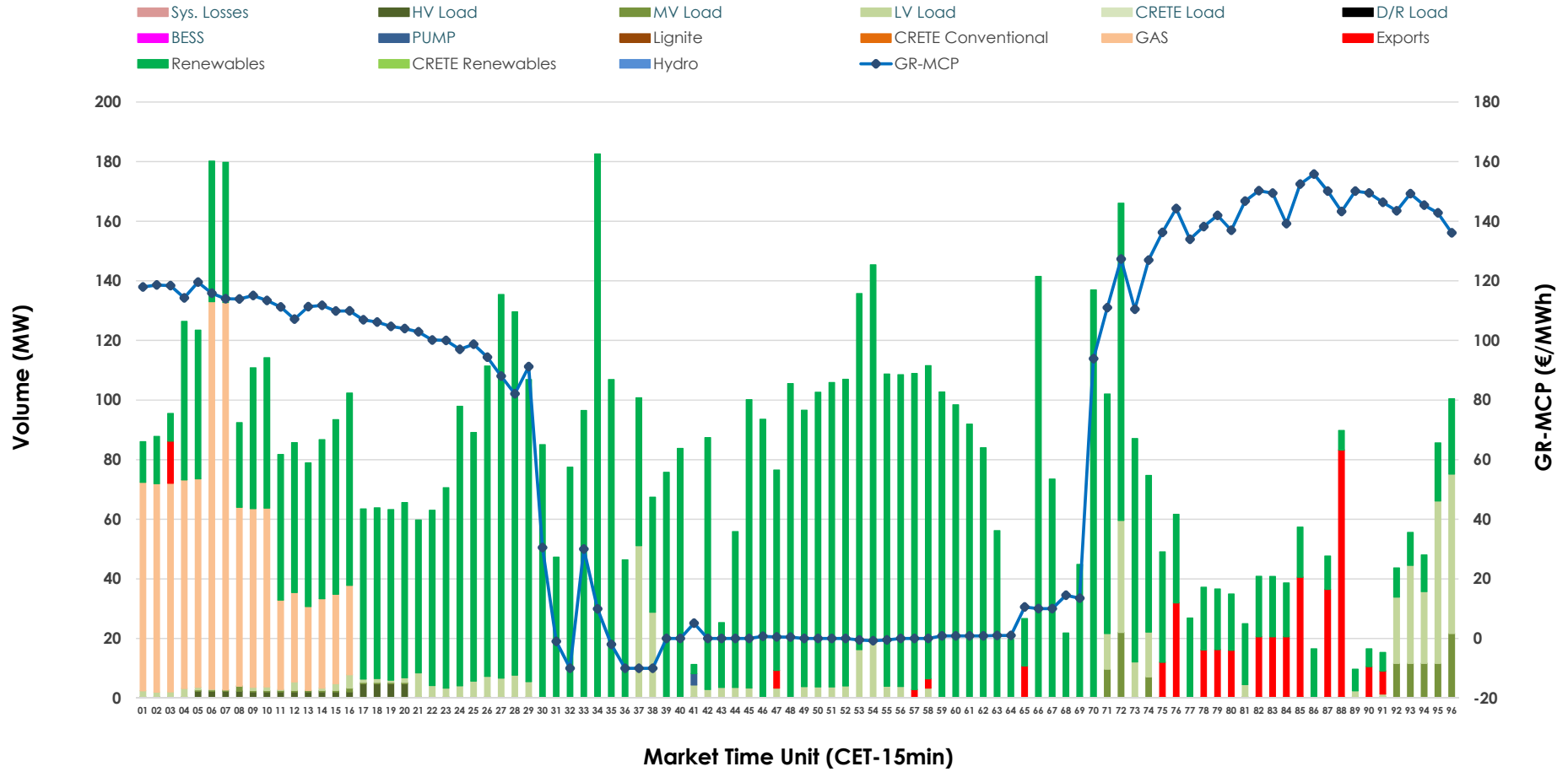


IDA '2' Market Outlook

17.05.2026 IDA '2' Market - Sell



17.05.2026 IDA '2' Market - Buy



GR Bidding Zone Weekly Figures

Delivery Day	11.05	12.05	13.05	14.05	15.05	16.05	17.05
	↗ 21%	↘ -22%	↗ 16%	→ 0%	↘ -3%	↘ -10%	↘ -12%
Avg.MCP (€/MWh)	105.00	82.23	95.03	94.61	91.42	82.13	72.35
Max.MCP (€/MWh)	191.00	199.04	189.00	232.85	167.09	133.13	155.79
Min.MCP (€/MWh)	-10.00	-4.56	-11.80	-8.88	-10.00	10.02	-10.01
	↘ -11%	↗ 103%	↘ -7%	↘ -5%	↘ -7%	↘ -23%	↗ 25%
Tot.Vol(GWh)	2.46	4.98	4.64	4.40	4.07	3.11	3.90

Trades by Order Type

Delivery Day		11.05	12.05	13.05	14.05	15.05	16.05	17.05	
Ord Price Type		Sell & Buy Trades in (GWh) per Price Type							(%)
PPT	(S)	0.000	0.000	0.000	0.000	0.000	0.000	0.000	0.00%
HBD	(S)	0.988	2.445	1.576	1.666	1.801	1.365	0.900	46.10%
BLK	(S)	0.000	0.000	0.000	0.000	0.000	0.000	0.000	0.00%
CPL	(S)	0.241	0.044	0.743	0.535	0.234	0.192	1.052	53.90%
PPT	(B)	0.000	0.000	0.000	0.000	0.000	0.000	0.000	0.00%
HBD	(B)	1.094	1.663	2.095	1.709	1.718	0.907	1.861	95.34%
BLK	(B)	0.000	0.000	0.000	0.000	0.000	0.000	0.000	0.00%
CPL	(B)	0.135	0.826	0.224	0.491	0.317	0.650	0.091	4.66%
		Sell & Buy Orders Traded per Price Type							(%)
PPT	(S)	0	0	0	0	0	0	0	0.00%
HBD	(S)	380	343	270	284	268	336	353	100.00%
BLK	(S)	0	0	0	0	0	0	0	0.00%
PPT	(B)	0	0	0	0	0	0	0	0.00%
HBD	(B)	529	453	469	353	517	271	647	100.00%
BLK	(B)	0	0	0	0	0	0	0	0.00%

MCP Market Clearing Price (€/MWh)
PPT Priority Price-Taking
HBD Hybrid
BLK Block
CPL Market Coupling Flow

Trade's Volume Mix

	Sell - MWh	Buy - MWh	
Lignite (0.0%)	0	0	(0.0%)
Crete Conv. (0.0%)	0	0	(0.0%)
Gas (4.5%)	88	242	(12.4%)
Hydro (1.7%)	34	0	(0.0%)
Imports (53.9%)	1,052		
RES (33.1%)	645	1,444	(74.0%)
Crete RES (0.0%)	0	0	(0.0%)
BESS (0.5%)	9	0	(0.0%)
HV Load (0.2%)	4	11	(0.6%)
MV Load (1.7%)	33	35	(1.8%)
LV Load (4.4%)	85	127	(6.5%)
Crete Load (0.0%)	0	0	(0.0%)
Pumping (0.0%)	0	1	(0.0%)
Exports		91	(4.7%)
Sys.Losses (0.0%)	0	0	(0.0%)
D/R Load (0.0%)	0	0	(0.0%)

