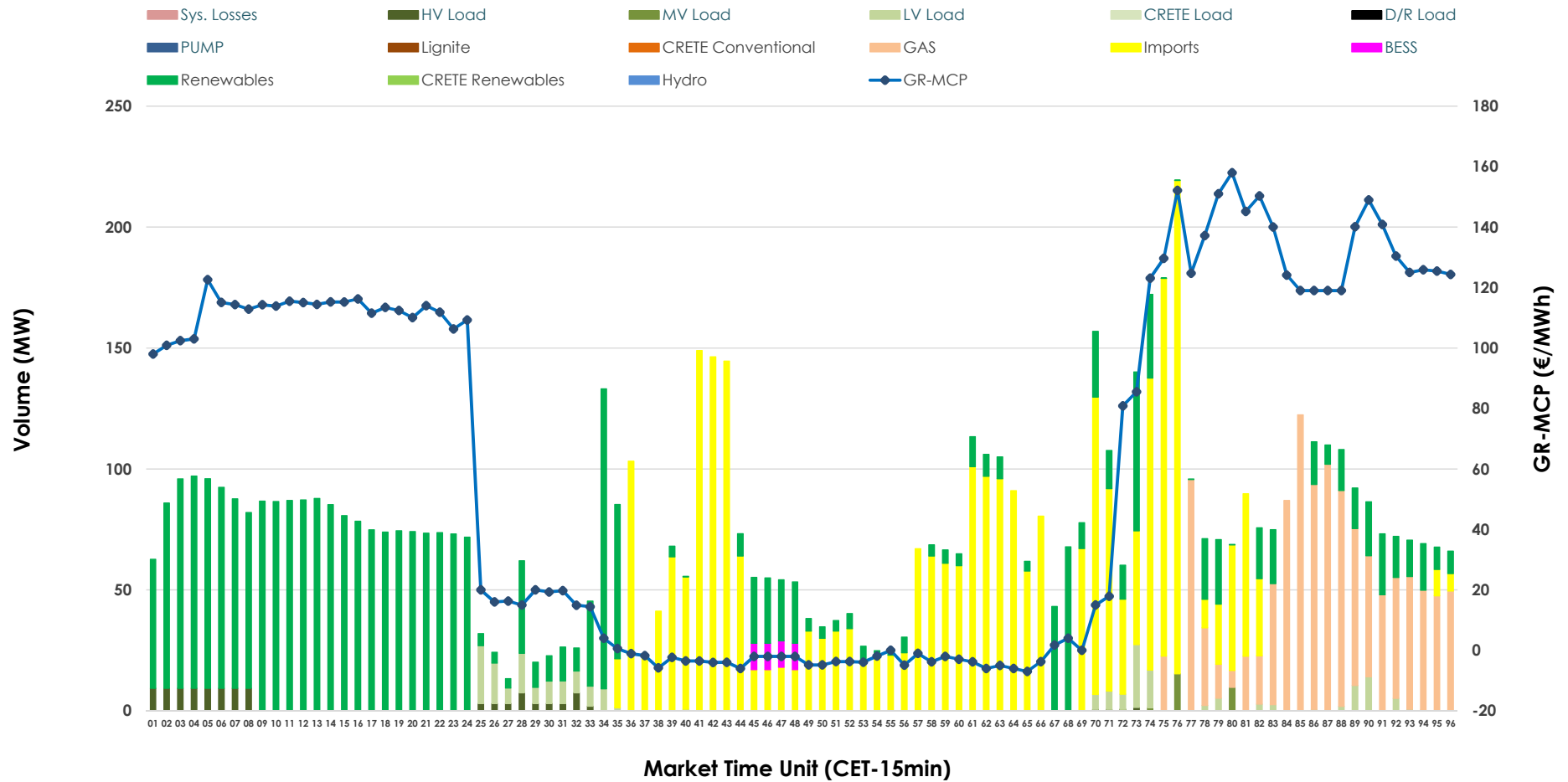


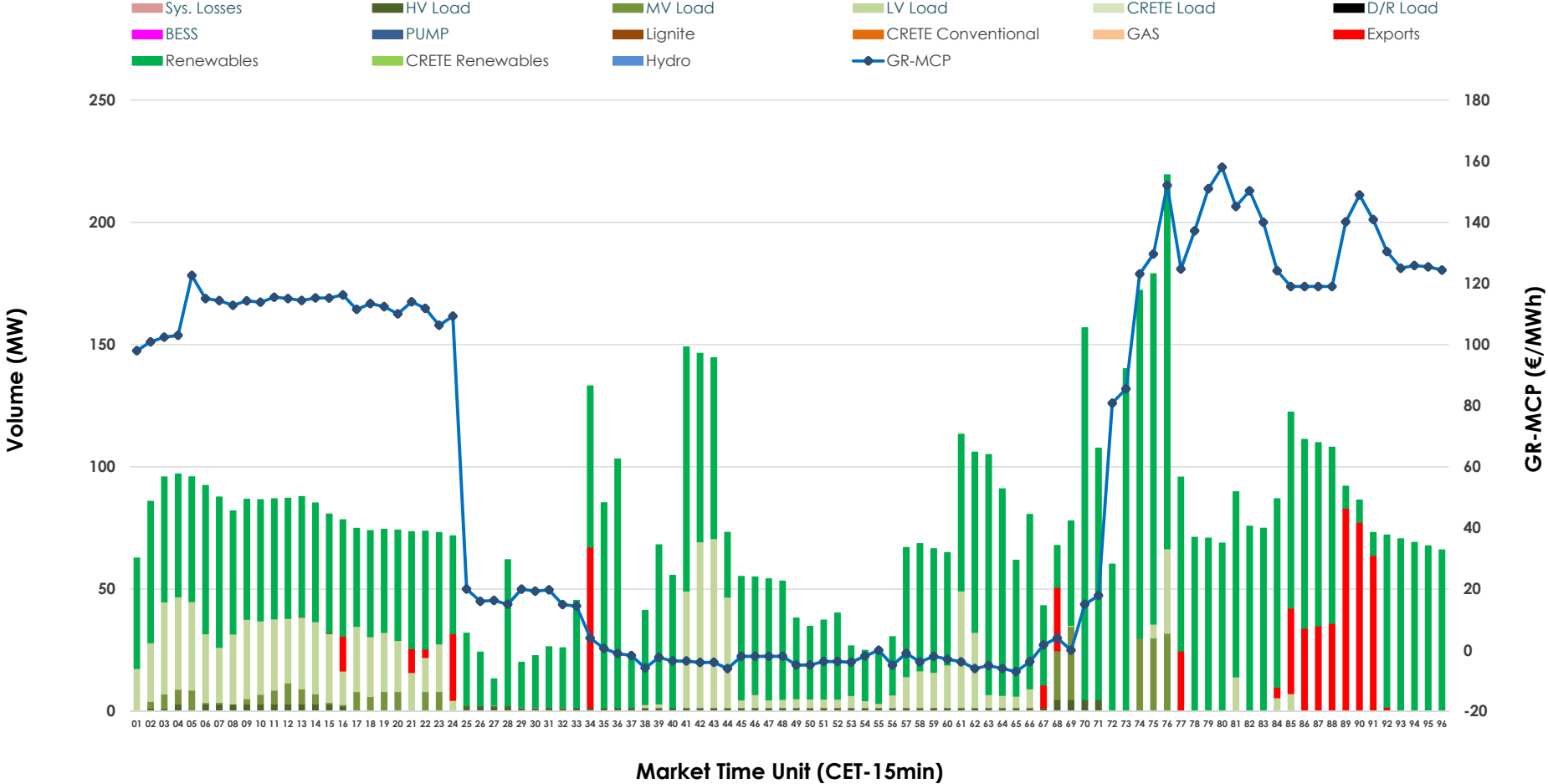


IDA '2' Market Outlook

24.05.2026 IDA '2' Market - Sell



24.05.2026 IDA '2' Market - Buy



GR Bidding Zone Weekly Figures

Delivery Day	18.05	19.05	20.05	21.05	22.05	23.05	24.05
	↑ 36%	↔ 29%	↓ -46%	↑ 33%	↔ -2%	↔ -26%	↔ -6%
Avg.MCP (€/MWh)	98.59	127.58	69.29	92.33	90.57	66.79	62.57
Max.MCP (€/MWh)	281.79	231.13	203.57	221.99	161.98	175.24	158.00
Min.MCP (€/MWh)	-8.32	71.02	-9.37	-10.26	-2.17	-2.04	-7.00
	↑ 57%	↔ -11%	↔ -6%	↔ -12%	↔ -6%	↑ 44%	↓ -39%
Tot.Vol(GWh)	6.11	5.45	5.14	4.55	4.28	6.16	3.73

Trades by Order Type

Delivery Day		18.05	19.05	20.05	21.05	22.05	23.05	24.05	
Ord Price Type		Sell & Buy Trades in (GWh) per Price Type							(%)
PPT	(S)	0.000	0.000	0.000	0.000	0.000	0.000	0.000	0.00%
HBD	(S)	2.778	1.464	2.483	1.964	1.614	2.467	1.137	60.88%
BLK	(S)	0.000	0.000	0.000	0.000	0.000	0.000	0.000	0.00%
CPL	(S)	0.276	1.261	0.086	0.309	0.527	0.613	0.730	39.12%
PPT	(B)	0.000	0.000	0.000	0.000	0.000	0.000	0.000	0.00%
HBD	(B)	2.994	2.401	1.762	1.744	1.739	2.289	1.729	92.63%
BLK	(B)	0.000	0.000	0.000	0.000	0.000	0.000	0.000	0.00%
CPL	(B)	0.061	0.324	0.807	0.529	0.402	0.791	0.138	7.37%
		Sell & Buy Orders Traded per Price Type							(%)
PPT	(S)	0	0	0	0	0	0	0	0.00%
HBD	(S)	482	350	332	268	311	226	176	100.00%
BLK	(S)	0	0	0	0	0	0	0	0.00%
PPT	(B)	0	0	0	0	0	0	0	0.00%
HBD	(B)	1212	662	544	413	417	543	406	100.00%
BLK	(B)	0	0	0	0	0	0	0	0.00%

- MCP** Market Clearing Price (€/MWh)
- PPT** Priority Price-Taking
- HBD** Hybrid
- BLK** Block
- CPL** Market Coupling Flow

Trade's Volume Mix

		Sell - MWh	Buy - MWh	
Lignite	(0.0%)	0	0	(0.0%)
Crete Conv.	(0.0%)	0	0	(0.0%)
Gas	(15.7%)	293	0	(0.0%)
Hydro	(0.0%)	0	0	(0.0%)
Imports	(39.1%)	730		
RES	(39.7%)	742	1,359	(72.8%)
Crete RES	(0.0%)	0	0	(0.0%)
BESS	(0.6%)	11	0	(0.0%)
HV Load	(1.5%)	28	31	(1.7%)
MV Load	(0.4%)	7	62	(3.3%)
LV Load	(3.0%)	56	277	(14.8%)
Crete Load	(0.0%)	0	0	(0.0%)
Pumping	(0.0%)	0	0	(0.0%)
Exports			138	(7.4%)
Sys.Losses	(0.0%)	0	0	(0.0%)
D/R Load	(0.0%)	0	0	(0.0%)

