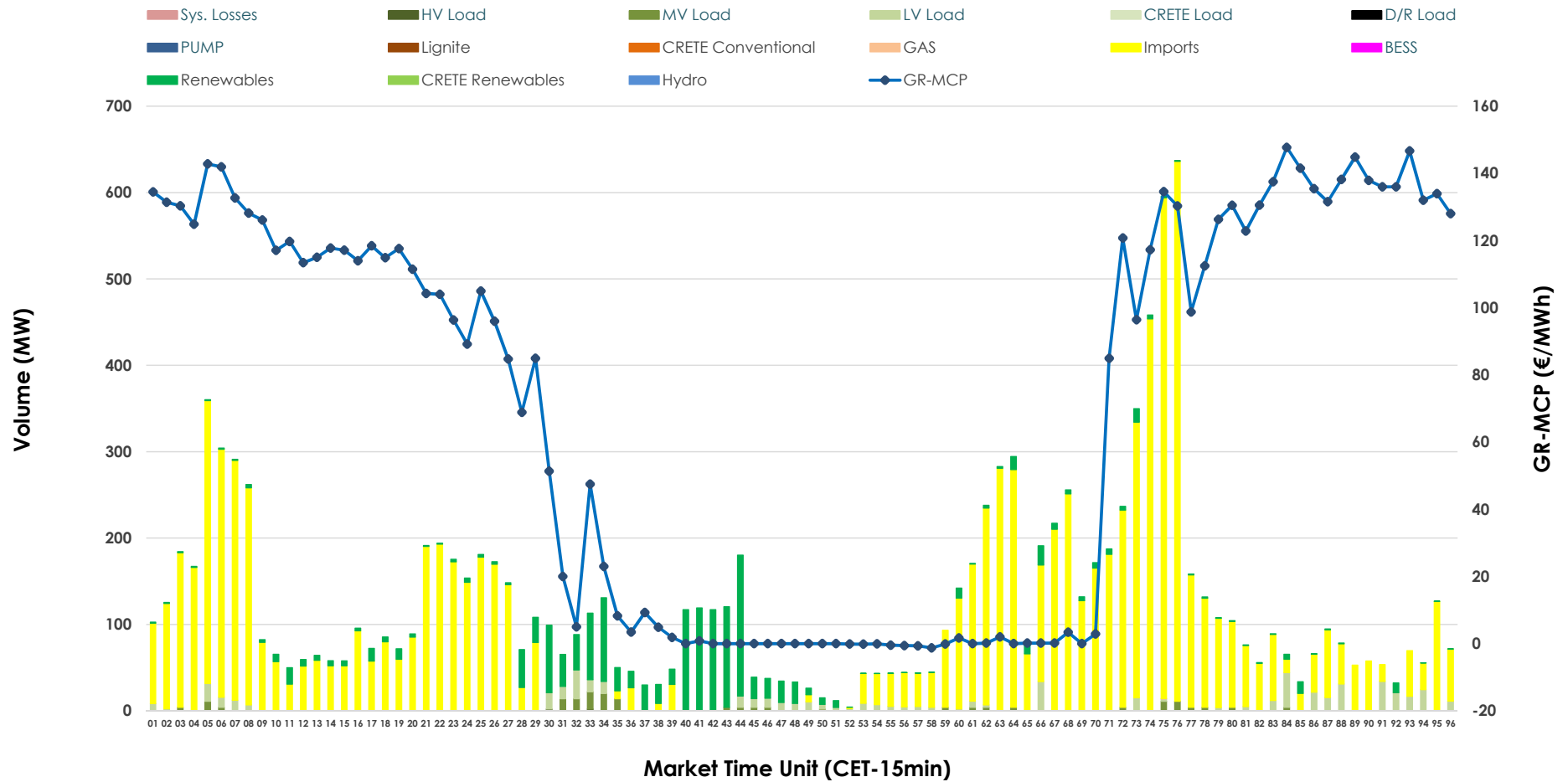


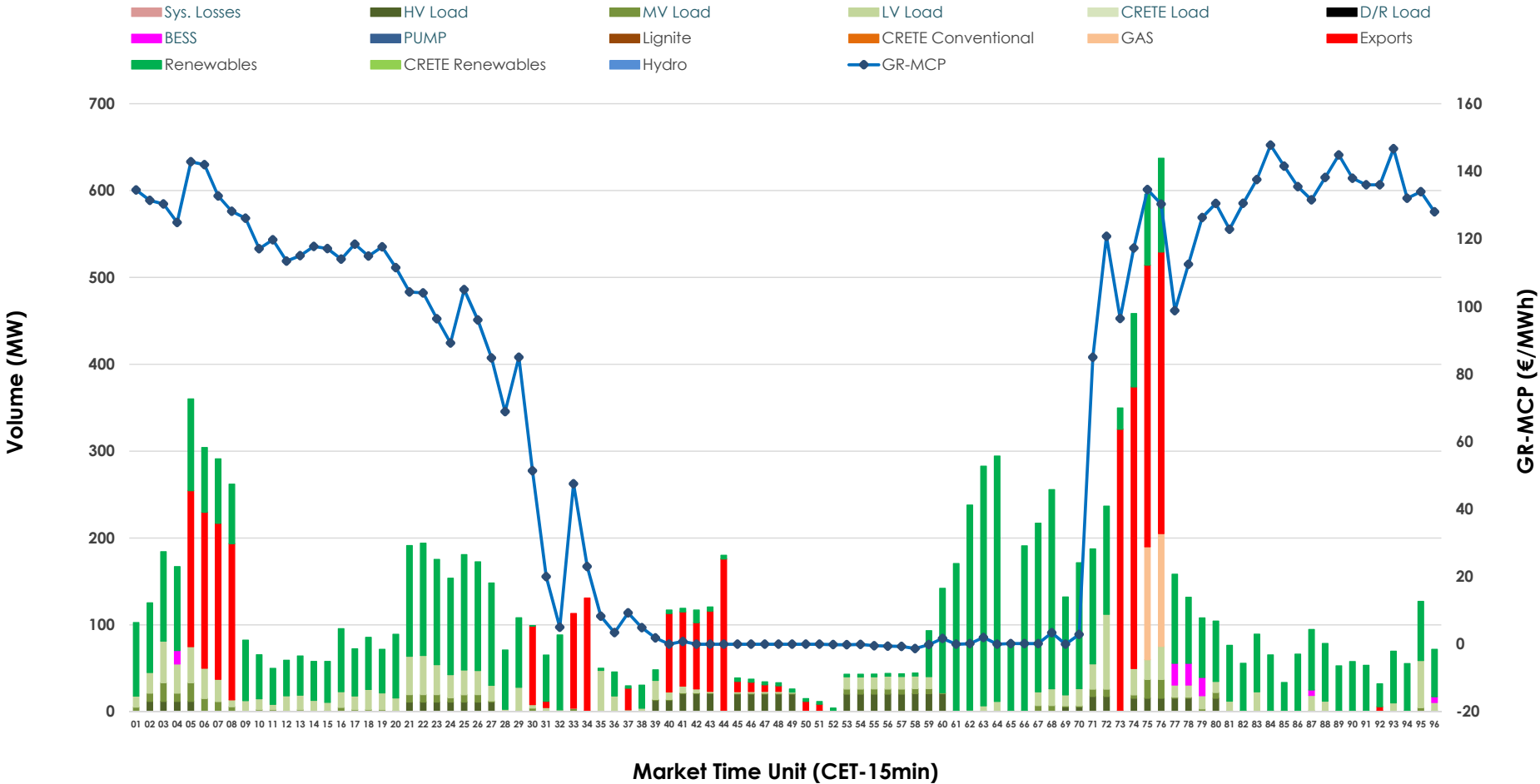


IDA '2' Market Outlook

05.07.2026 IDA '2' Market - Sell



05.07.2026 IDA '2' Market - Buy



GR Bidding Zone Weekly Figures

Delivery Day	29.06	30.06	01.07	02.07	03.07	04.07	05.07
	↑ 50%	↑ 37%	↔ 20%	↓ -17%	↓ -31%	↓ -21%	↓ -6%
Avg.MCP (€/MWh)	101.76	139.08	167.17	139.09	95.72	75.31	71.02
Max.MCP (€/MWh)	280.03	509.29	434.88	305.21	173.13	164.28	147.74
Min.MCP (€/MWh)	-0.38	-9.83	72.11	28.63	6.01	-8.51	-1.28
	↓ -15%	↔ 6%	↔ 26%	→ 0%	↑ 78%	↓ -21%	→ 0%
Tot.Vol(GWh)	3.24	3.44	4.35	4.33	7.72	6.06	6.09

Trades by Order Type

Delivery Day		29.06	30.06	01.07	02.07	03.07	04.07	05.07	
Ord Price Type		Sell & Buy Trades in (GWh) per Price Type							(%)
PPT	(S)	0.000	0.000	0.000	0.000	0.000	0.000	0.000	0.00%
HBD	(S)	1.523	1.318	1.207	1.220	2.152	1.235	0.576	18.93%
BLK	(S)	0.000	0.000	0.000	0.000	0.000	0.000	0.000	0.00%
CPL	(S)	0.095	0.404	0.966	0.946	1.710	1.797	2.468	81.07%
PPT	(B)	0.000	0.000	0.000	0.000	0.000	0.000	0.000	0.00%
HBD	(B)	0.757	1.236	1.788	1.888	2.325	2.622	2.306	75.74%
BLK	(B)	0.000	0.000	0.000	0.000	0.000	0.000	0.000	0.00%
CPL	(B)	0.861	0.486	0.385	0.278	1.537	0.410	0.738	24.26%
		Sell & Buy Orders Traded per Price Type							(%)
PPT	(S)	0	0	0	0	0	0	0	0.00%
HBD	(S)	424	315	309	223	466	295	253	100.00%
BLK	(S)	0	0	0	0	0	0	0	0.00%
PPT	(B)	0	0	0	0	0	0	0	0.00%
HBD	(B)	250	366	613	569	589	392	928	100.00%
BLK	(B)	0	0	0	0	0	0	0	0.00%

- MCP** Market Clearing Price (€/MWh)
- PPT** Priority Price-Taking
- HBD** Hybrid
- BLK** Block
- CPL** Market Coupling Flow

Trade's Volume Mix

	Sell - MWh	Buy - MWh	
Lignite	0	0	(0.0%)
Crete Conv.	0	0	(0.0%)
Gas	0	65	(2.1%)
Hydro	0	0	(0.0%)
Imports	2,468		(81.1%)
RES	390	1,624	(53.4%)
Crete RES	0	0	(0.0%)
BESS	0	25	(0.8%)
HV Load	1	155	(5.1%)
MV Load	44	93	(3.1%)
LV Load	141	343	(11.3%)
Crete Load	0	0	(0.0%)
Pumping	0	0	(0.0%)
Exports		738	(24.3%)
Sys.Losses	0	0	(0.0%)
D/R Load	0	0	(0.0%)

