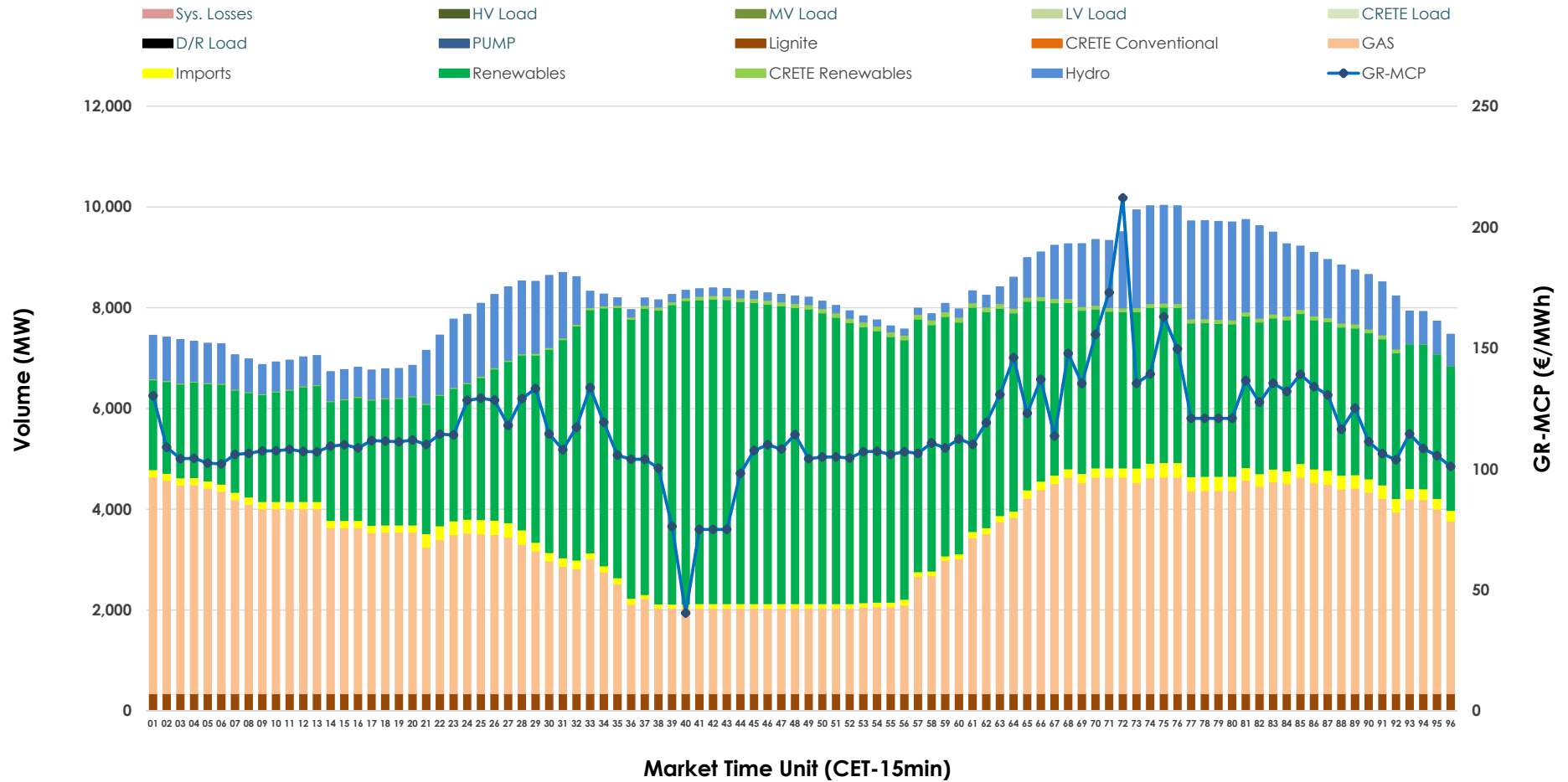


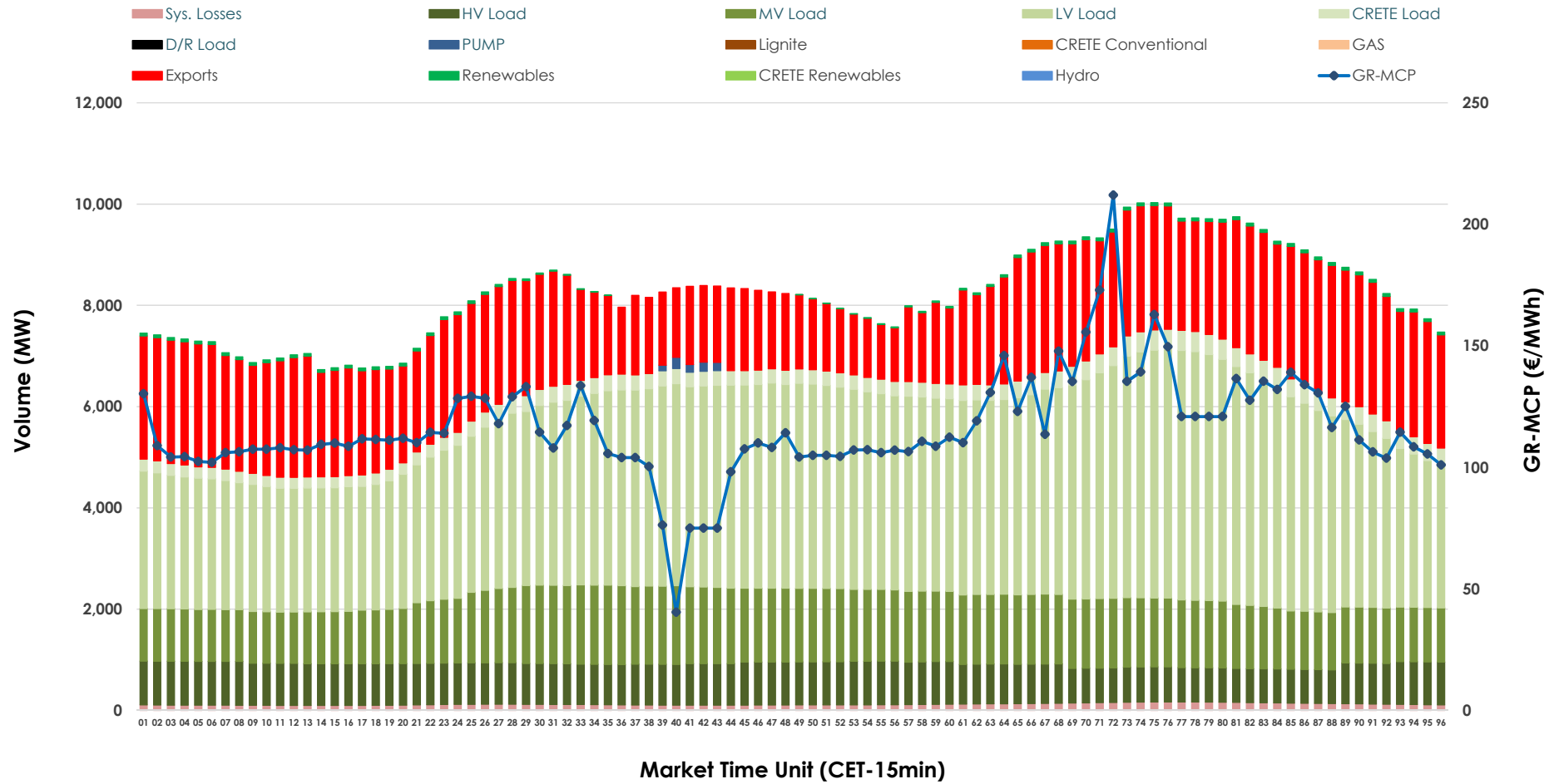


Day-Ahead Market Outlook

17.03.2026 Day-Ahead Market - Sell



17.03.2026 Day-Ahead Market - Buy



GR Bidding Zone Weekly Figures

Delivery Day	11.03	12.03	13.03	14.03	15.03	16.03	17.03
	↗ 10%	↗ 16%	↘ -17%	↘ -6%	↘ -1%	↗ 20%	↗ 16%
Avg.MCP (€/MWh)	93.35	108.24	89.55	84.39	83.39	100.39	116.20
Max.MCP (€/MWh)	240.49	247.52	215.45	183.48	164.03	199.21	212.05
Min.MCP (€/MWh)	0.00	0.00	-0.10	-6.30	-1.01	11.01	40.40
	↘ -8%	↗ 5%	↗ 1%	↘ -4%	↘ -6%	↗ 4%	↗ 17%
Tot.Vol(GWh)	340.80	358.00	362.26	346.25	324.10	338.55	395.97

Trades by Order Type

Delivery Day		11.03	12.03	13.03	14.03	15.03	16.03	17.03	
Ord Price Type		Sell & Buy Trades in (GWh) per Price Type							(%)
PPT	(S)	79.824	79.190	88.806	81.903	74.010	71.660	84.654	42.76%
HBD	(S)	58.548	66.823	60.729	63.501	60.076	63.406	76.425	38.60%
BLK	(S)	26.866	29.533	31.267	27.207	27.936	29.721	36.898	18.64%
CPL	(S)	5.164	3.454	0.328	0.515	0.029	4.488	0.007	0.00%
PPT	(B)	12.840	13.965	14.237	14.168	12.939	13.684	14.050	7.10%
HBD	(B)	138.311	138.400	139.218	131.135	118.547	136.429	147.286	74.39%
BLK	(B)	0.000	0.000	0.000	0.000	0.000	0.000	0.000	0.00%
CPL	(B)	19.251	26.635	27.674	27.823	30.565	19.163	36.648	18.51%
		Sell & Buy Orders Traded per Price Type							(%)
PPT	(S)	1996	1979	1976	1847	1792	1814	1949	38.13%
HBD	(S)	2905	3046	2552	2666	2723	3131	3142	61.46%
BLK	(S)	10	14	14	12	12	10	21	0.41%
PPT	(B)	2312	2311	2364	2364	2341	2255	2260	35.86%
HBD	(B)	4033	3862	4085	3996	3981	3949	4043	64.14%
BLK	(B)	0	0	0	0	0	0	0	0.00%

MCP Market Clearing Price (€/MWh)
PPT Priority Price-Taking
HBD Hybrid
BLK Block
CPL Market Coupling Flow

Trade's Volume Mix

		Sell - MWh	Buy - MWh	
Lignite	(4.1%)	8,160	0	(0.0%)
Crete Conv.	(0.0%)	0	0	(0.0%)
Gas	(38.6%)	76,459	0	(0.0%)
Hydro	(9.8%)	19,402	0	(0.0%)
Imports	(2.1%)	4,163		
RES	(44.7%)	88,401	911	(0.5%)
Crete RES	(0.7%)	1,399	0	(0.0%)
HV Load	(0.0%)	0	19,088	(9.6%)
MV Load	(0.0%)	0	31,129	(15.7%)
LV Load	(0.0%)	0	86,912	(43.9%)
Crete Load	(0.0%)	0	7,246	(3.7%)
Pumping	(0.0%)	0	208	(0.1%)
Exports			49,581	(25.0%)
Sys.Losses	(0.0%)	0	2,909	(1.5%)
D/R Load	(0.0%)	0	0	(0.0%)

