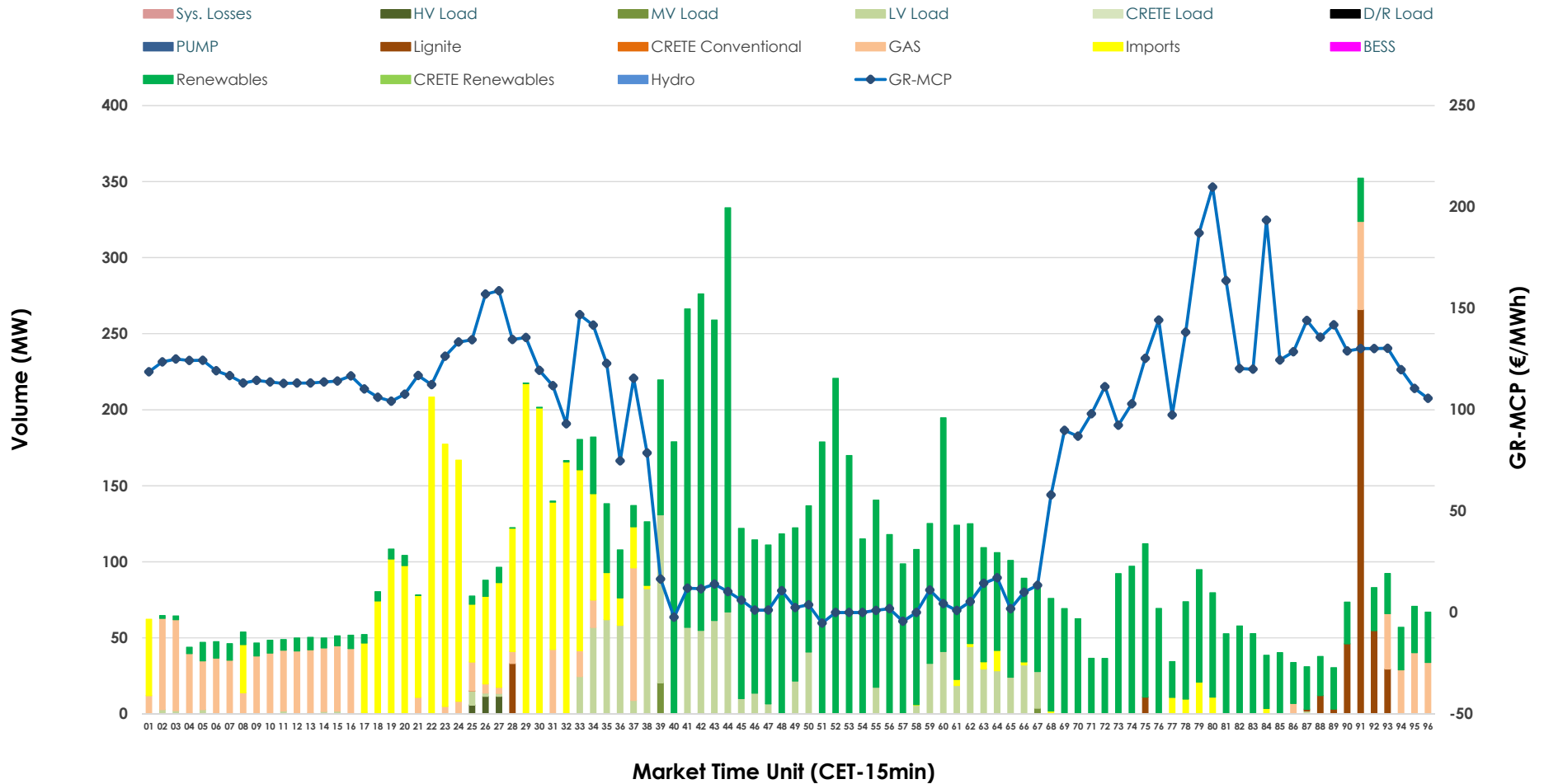


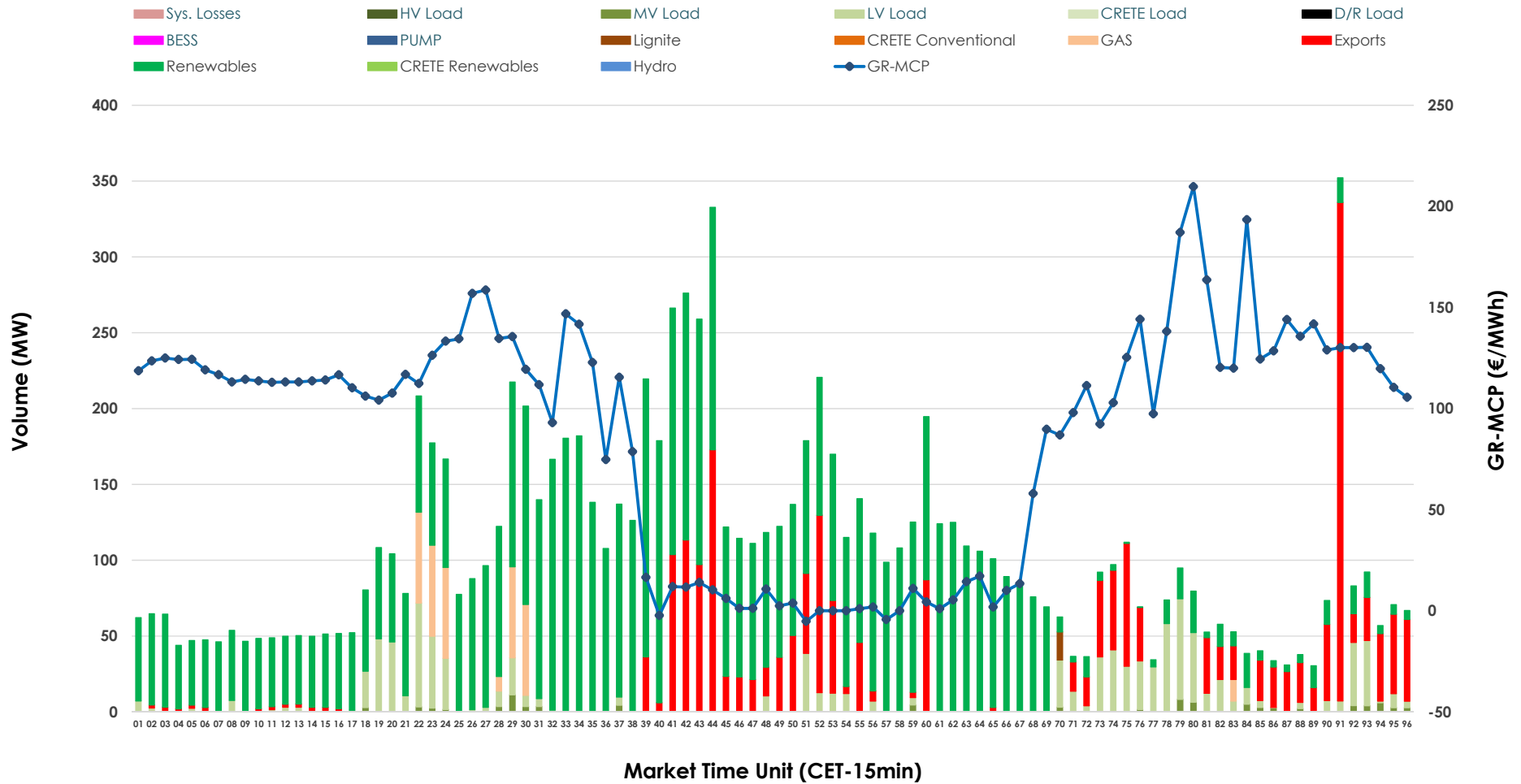


# IDA '2' Market Outlook

30.04.2026 IDA '2' Market - Sell



### 30.04.2026 IDA '2' Market - Buy



### GR Bidding Zone Weekly Figures

Delivery Day	24.04	25.04	26.04	27.04	28.04	29.04	30.04
	↗ 10%	↘ -30%	↘ -2%	↗ 53%	↘ -12%	↗ 45%	↘ -14%
Avg.MCP (€/MWh)	75.11	52.86	51.81	79.14	69.62	101.24	86.96
Max.MCP (€/MWh)	211.94	183.46	134.70	229.04	155.85	220.05	209.77
Min.MCP (€/MWh)	-20.00	-52.00	-55.00	-0.83	-25.33	-5.16	-5.23
	↘ -11%	↘ -20%	↗ 10%	↗ 33%	↘ -17%	↗ 2%	↗ 29%
Tot.Vol(GWh)	4.07	3.24	3.56	4.73	3.91	4.01	5.18

### Trades by Order Type

Delivery Day		24.04	25.04	26.04	27.04	28.04	29.04	30.04	
Ord Price Type		Sell & Buy Trades in (GWh) per Price Type							(%)
PPT	(S)	0.000	0.000	0.000	0.000	0.000	0.000	0.000	0.00%
HBD	(S)	1.760	0.793	1.228	1.628	0.892	1.623	2.016	77.92%
BLK	(S)	0.000	0.000	0.000	0.000	0.000	0.000	0.000	0.00%
CPL	(S)	0.274	0.827	0.550	0.736	1.064	0.381	0.572	22.08%
PPT	(B)	0.000	0.000	0.000	0.000	0.000	0.000	0.000	0.00%
HBD	(B)	1.585	1.538	1.507	2.024	1.839	1.229	2.052	79.28%
BLK	(B)	0.000	0.000	0.000	0.000	0.000	0.000	0.000	0.00%
CPL	(B)	0.449	0.082	0.272	0.340	0.118	0.775	0.536	20.72%
		Sell & Buy Orders Traded per Price Type							(%)
PPT	(S)	0	0	0	0	0	0	0	0.00%
HBD	(S)	384	253	226	390	206	420	428	100.00%
BLK	(S)	0	0	0	0	0	0	0	0.00%
PPT	(B)	0	0	0	0	0	0	0	0.00%
HBD	(B)	425	283	520	740	512	512	448	100.00%
BLK	(B)	0	0	0	0	0	0	0	0.00%

- MCP** Market Clearing Price (€/MWh)
- PPT** Priority Price-Taking
- HBD** Hybrid
- BLK** Block
- CPL** Market Coupling Flow

### Trade's Volume Mix

	Sell - MWh	Buy - MWh	
Lignite (4.4%)	114	5	(0.2%)
Crete Conv. (0.0%)	0	0	(0.0%)
Gas (10.1%)	262	81	(3.1%)
Hydro (0.0%)	0	0	(0.0%)
Imports (22.1%)	572		
RES (52.5%)	1,359	1,684	(65.1%)
Crete RES (0.0%)	0	0	(0.0%)
BESS (0.0%)	0	0	(0.0%)
HV Load (0.3%)	7	0	(0.0%)
MV Load (0.3%)	8	24	(0.9%)
LV Load (10.3%)	265	258	(10.0%)
Crete Load (0.0%)	0	0	(0.0%)
Pumping (0.0%)	0	0	(0.0%)
Exports		536	(20.7%)
Sys.Losses (0.0%)	0	0	(0.0%)
D/R Load (0.0%)	0	0	(0.0%)

