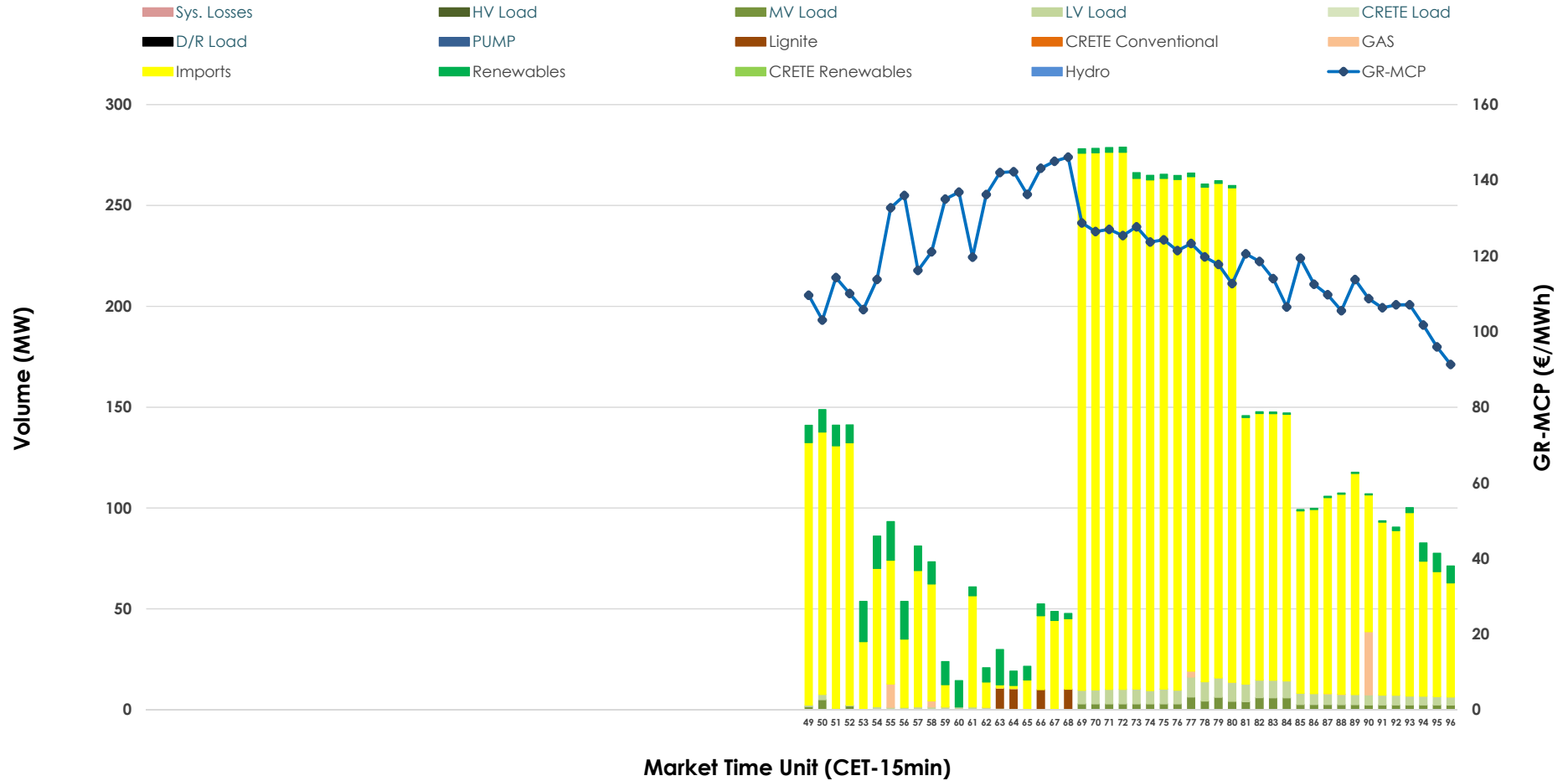


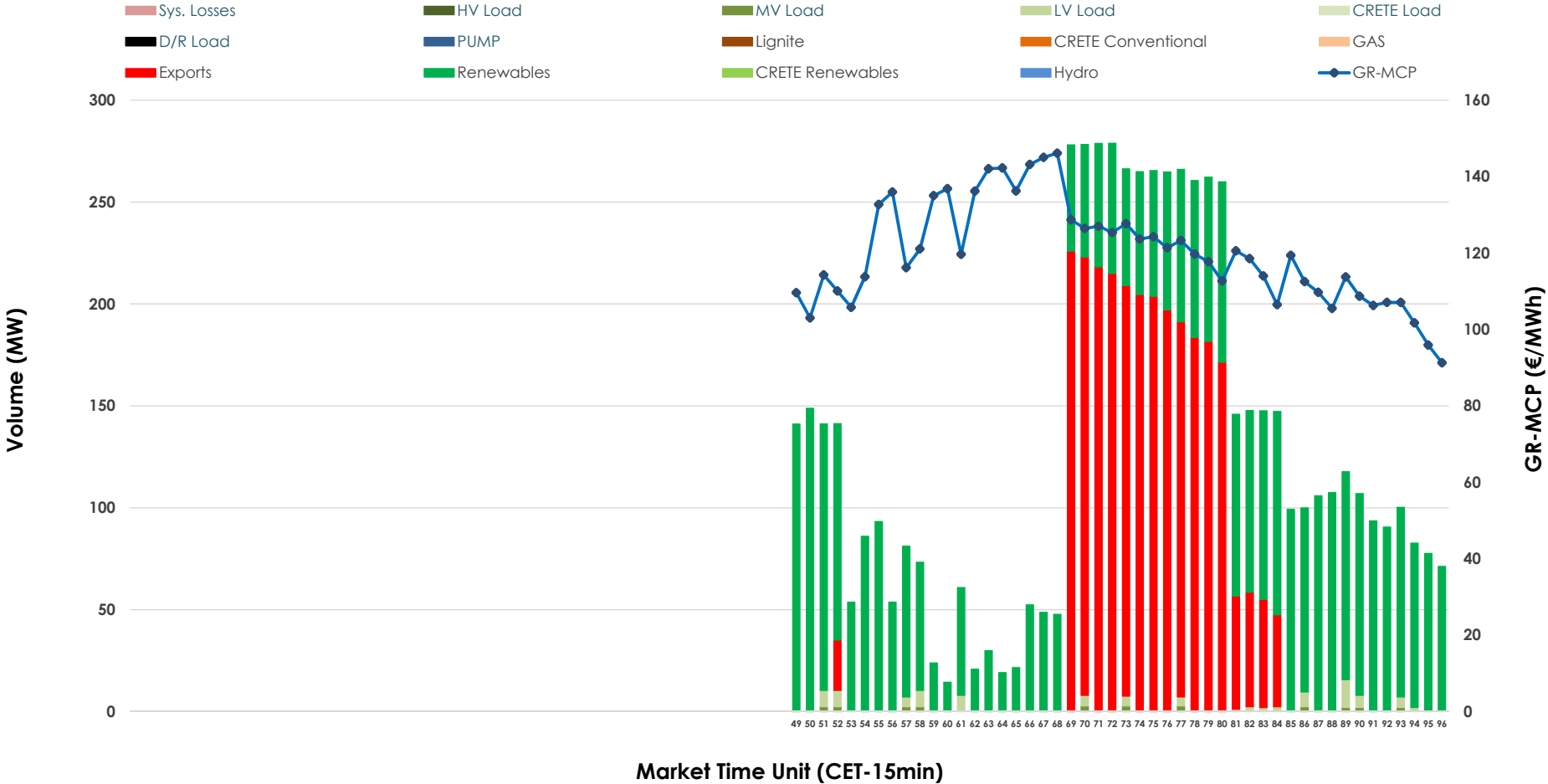


IDA '3' Market Outlook

20.12.2025 IDA '3' Market - Sell



20.12.2025 IDA '3' Market - Buy



GR Bidding Zone Weekly Figures

Delivery Day	14.12	15.12	16.12	17.12	18.12	19.12	20.12
	↗ 2%	↕ 38%	↗ 8%	↘ -16%	↕ 51%	↘ -35%	↘ -12%
Avg.MCP (€/MWh)	111.40	153.22	165.56	138.60	209.50	136.53	120.03
Max.MCP (€/MWh)	141.00	249.84	280.15	206.35	341.53	291.46	146.12
Min.MCP (€/MWh)	26.71	52.50	83.40	80.85	94.35	46.02	91.29
	↘ -10%	↘ -40%	↘ -17%	↕ 230%	↘ -33%	↗ 14%	↕ 48%
Tot.Vol(GWh)	1.70	1.01	0.84	2.78	1.87	2.14	3.16

Trades by Order Type

Delivery Day		14.12	15.12	16.12	17.12	18.12	19.12	20.12	
Ord Price Type		Sell & Buy Trades in (GWh) per Price Type							(%)
PPT	(S)	0.000	0.000	0.000	0.000	0.000	0.000	0.000	0.00%
HBD	(S)	0.450	0.479	0.337	1.019	0.614	0.692	0.168	10.66%
BLK	(S)	0.000	0.000	0.000	0.000	0.000	0.000	0.000	0.00%
CPL	(S)	0.398	0.029	0.085	0.373	0.321	0.379	1.411	89.34%
PPT	(B)	0.000	0.000	0.000	0.000	0.000	0.000	0.000	0.00%
HBD	(B)	0.477	0.404	0.374	1.325	0.770	1.048	0.920	58.26%
BLK	(B)	0.000	0.000	0.000	0.000	0.000	0.000	0.000	0.00%
CPL	(B)	0.370	0.103	0.048	0.067	0.165	0.023	0.659	41.74%
		Sell & Buy Orders Traded per Price Type							(%)
PPT	(S)	0	0	0	0	0	0	0	0.00%
HBD	(S)	103	50	48	142	87	260	161	100.00%
BLK	(S)	0	0	0	0	0	0	0	0.00%
PPT	(B)	0	0	0	0	0	0	0	0.00%
HBD	(B)	162	165	208	241	119	148	179	100.00%
BLK	(B)	0	0	0	0	0	0	0	0.00%

- MCP** Market Clearing Price (€/MWh)
- PPT** Priority Price-Taking
- HBD** Hybrid
- BLK** Block
- CPL** Market Coupling Flow

Trade's Volume Mix

	Sell - MWh	Buy - MWh	
Lignite (0.6%)	10	0	(0.0%)
Crete Conv. (0.0%)	0	0	(0.0%)
Gas (0.8%)	12	0	(0.0%)
Hydro (0.0%)	0	0	(0.0%)
Imports (89.3%)	1,411		
RES (4.4%)	69	890	(56.4%)
Crete RES (0.0%)	0	0	(0.0%)
HV Load (0.0%)	0	0	(0.0%)
MV Load (1.6%)	26	7	(0.4%)
LV Load (3.2%)	51	23	(1.5%)
Crete Load (0.0%)	0	0	(0.0%)
Pumping (0.0%)	0	0	(0.0%)
Exports		659	(41.7%)
Sys.Losses (0.0%)	0	0	(0.0%)
D/R Load (0.0%)	0	0	(0.0%)

