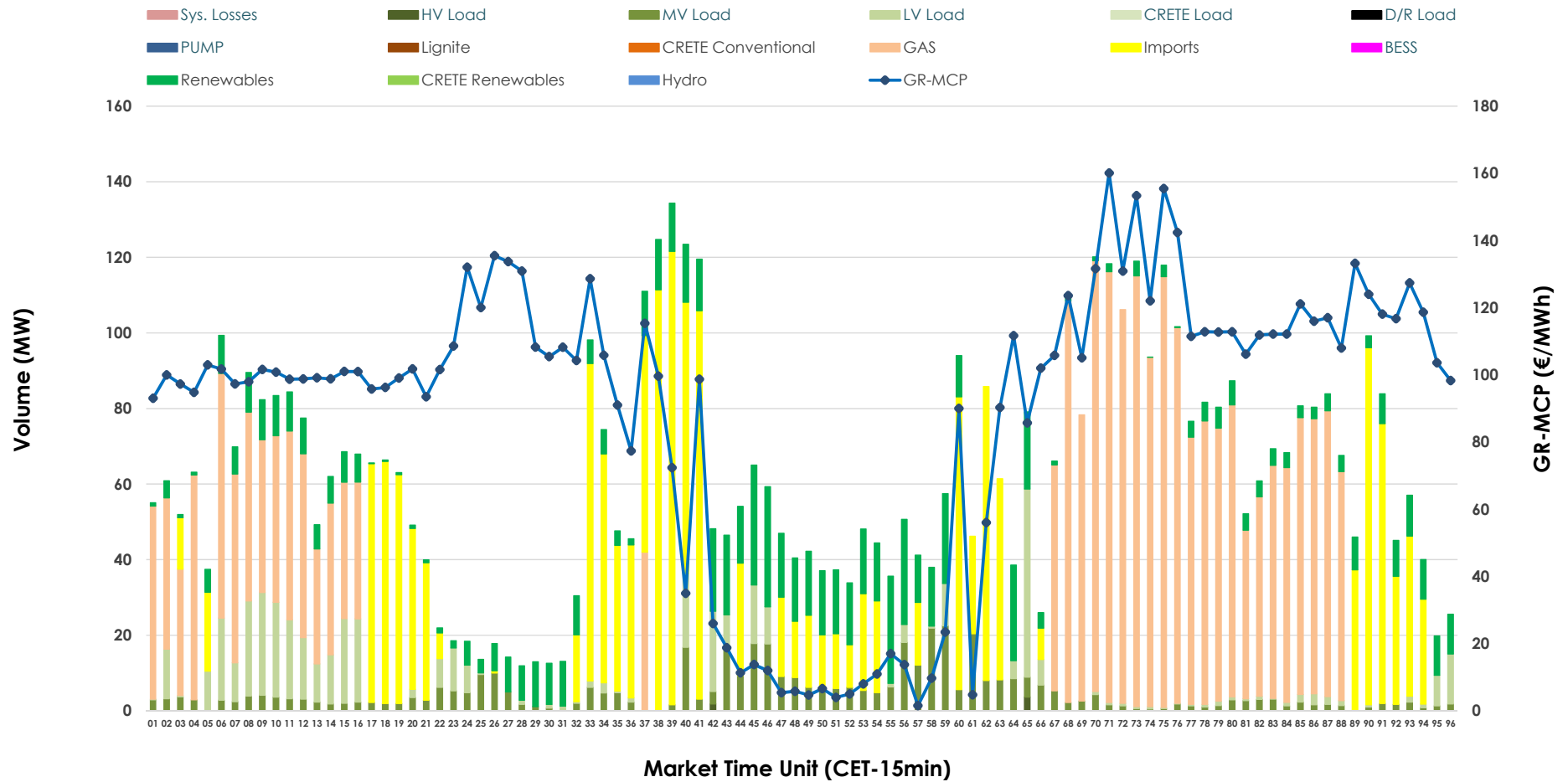


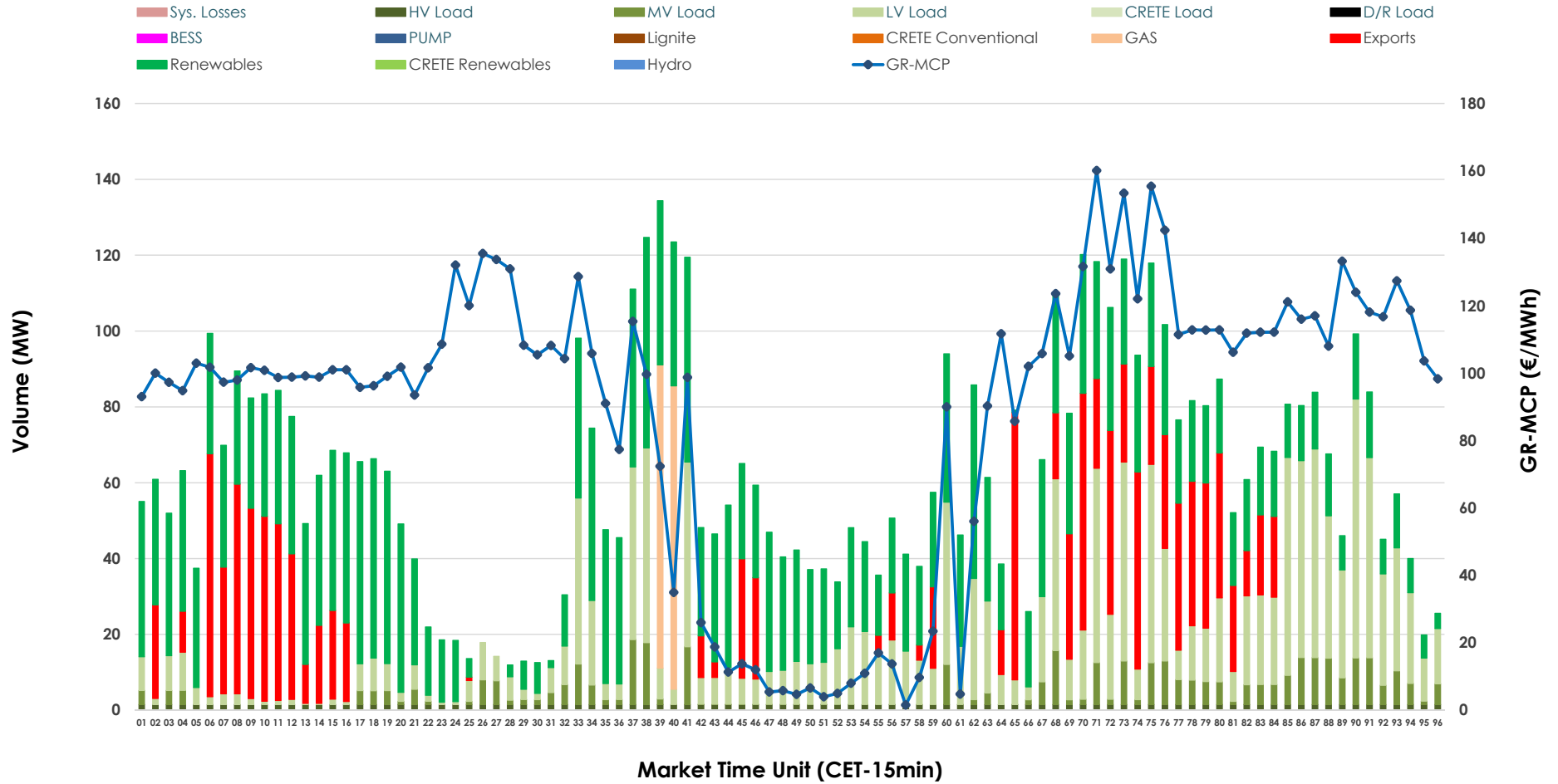


# IDA '1' Market Outlook

18.03.2026 IDA '1' Market - Sell



### 18.03.2026 IDA '1' Market - Buy



### GR Bidding Zone Weekly Figures

Delivery Day	12.03	13.03	14.03	15.03	16.03	17.03	18.03
	↗ 18%	↘ -28%	↗ 4%	↘ -3%	↗ 26%	↗ 16%	↘ -23%
<b>Avg.MCP (€/MWh)</b>	109.46	78.36	81.45	78.90	99.43	114.99	89.03
<b>Max.MCP (€/MWh)</b>	257.52	206.44	183.47	158.04	199.06	209.10	160.11
<b>Min.MCP (€/MWh)</b>	-9.65	-24.30	-17.57	-15.50	13.78	48.13	1.56
	↗ 79%	↗ 14%	↘ -36%	↘ -20%	↘ -1%	↗ 58%	↘ -28%
<b>Tot.Vol(GWh)</b>	4.61	5.27	3.37	2.69	2.67	4.22	3.02

### Trades by Order Type

Delivery Day		12.03	13.03	14.03	15.03	16.03	17.03	18.03	
<b>Ord Price Type</b>		<b>Sell &amp; Buy Trades in (GWh) per Price Type</b>							<b>(%)</b>
<b>PPT</b>	(S)	0.000	0.000	0.000	0.000	0.000	0.000	0.000	0.00%
<b>HBD</b>	(S)	1.942	2.606	1.018	0.554	0.860	1.061	1.072	70.93%
<b>BLK</b>	(S)	0.000	0.000	0.000	0.000	0.000	0.000	0.000	0.00%
<b>CPL</b>	(S)	0.361	0.029	0.665	0.793	0.473	1.049	0.439	29.07%
<b>PPT</b>	(B)	0.000	0.000	0.000	0.000	0.000	0.000	0.000	0.00%
<b>HBD</b>	(B)	2.233	1.733	1.503	1.282	1.083	1.968	1.212	80.22%
<b>BLK</b>	(B)	0.000	0.000	0.000	0.000	0.000	0.000	0.000	0.00%
<b>CPL</b>	(B)	0.070	0.902	0.180	0.066	0.251	0.142	0.299	19.78%
		<b>Sell &amp; Buy Orders Traded per Price Type</b>							<b>(%)</b>
<b>PPT</b>	(S)	0	0	0	0	0	0	0	0.00%
<b>HBD</b>	(S)	286	300	327	203	156	209	291	100.00%
<b>BLK</b>	(S)	0	0	0	0	0	0	0	0.00%
<b>PPT</b>	(B)	0	0	0	0	0	0	0	0.00%
<b>HBD</b>	(B)	927	1203	882	715	761	835	802	100.00%
<b>BLK</b>	(B)	0	0	0	0	0	0	0	0.00%

- MCP** Market Clearing Price (€/MWh)
- PPT** Priority Price-Taking
- HBD** Hybrid
- BLK** Block
- CPL** Market Coupling Flow

### Trade's Volume Mix

	Sell - MWh	Buy - MWh	
<b>Lignite</b> (0.0%)	0	0	(0.0%)
<b>Crete Conv.</b> (0.0%)	0	0	(0.0%)
<b>Gas</b> (41.5%)	627	40	(2.6%)
<b>Hydro</b> (0.0%)	0	0	(0.0%)
<b>Imports</b> (29.1%)	439		
<b>RES</b> (13.9%)	210	643	(42.5%)
<b>Crete RES</b> (0.0%)	0	0	(0.0%)
<b>BESS</b> (0.0%)	0	0	(0.0%)
<b>HV Load</b> (0.1%)	1	36	(2.4%)
<b>MV Load</b> (7.6%)	115	89	(5.9%)
<b>LV Load</b> (7.8%)	118	405	(26.8%)
<b>Crete Load</b> (0.0%)	0	0	(0.0%)
<b>Pumping</b> (0.0%)	0	0	(0.0%)
<b>Exports</b>		299	(19.8%)
<b>Sys.Losses</b> (0.0%)	0	0	(0.0%)
<b>D/R Load</b> (0.0%)	0	0	(0.0%)

