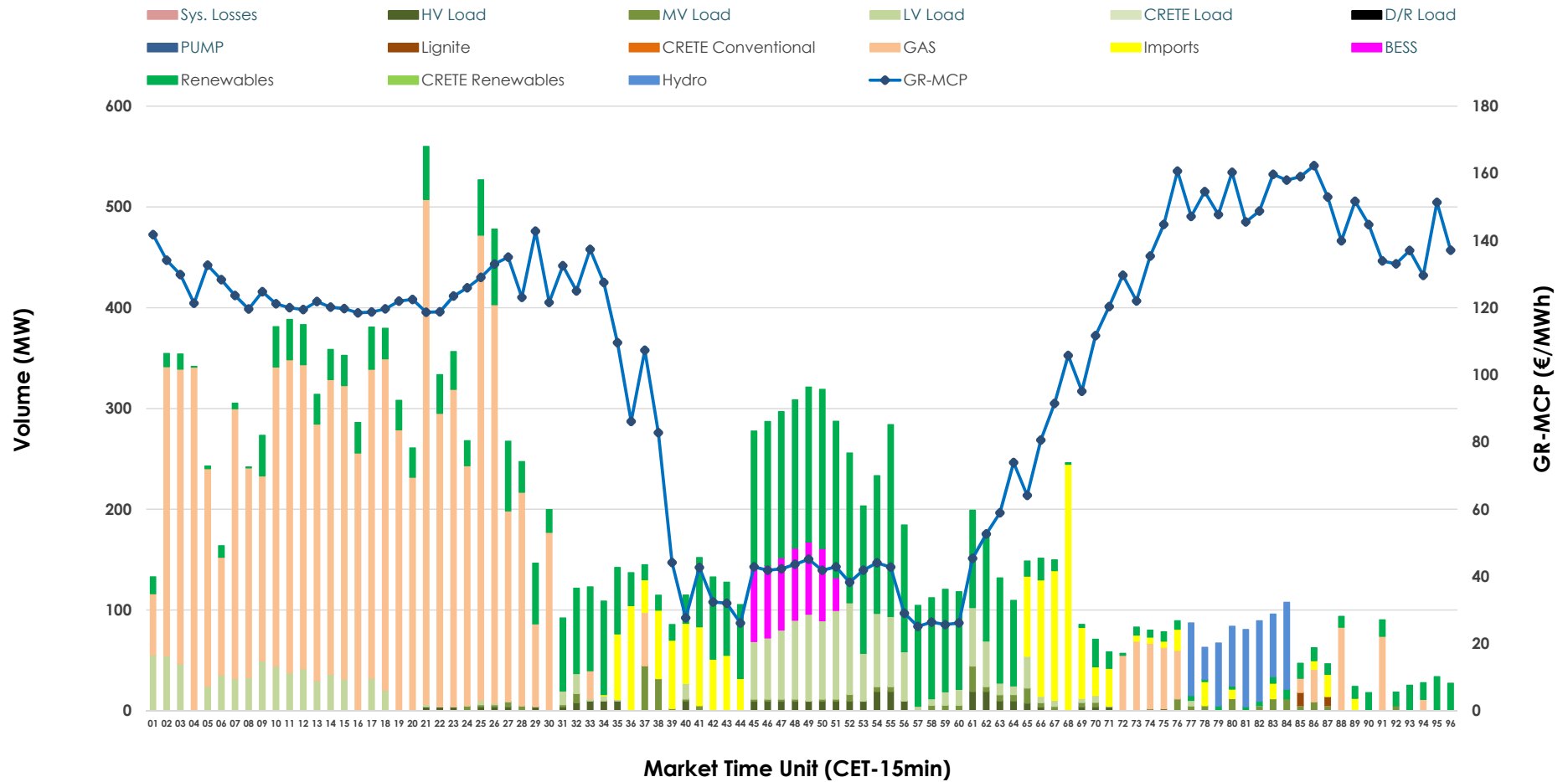


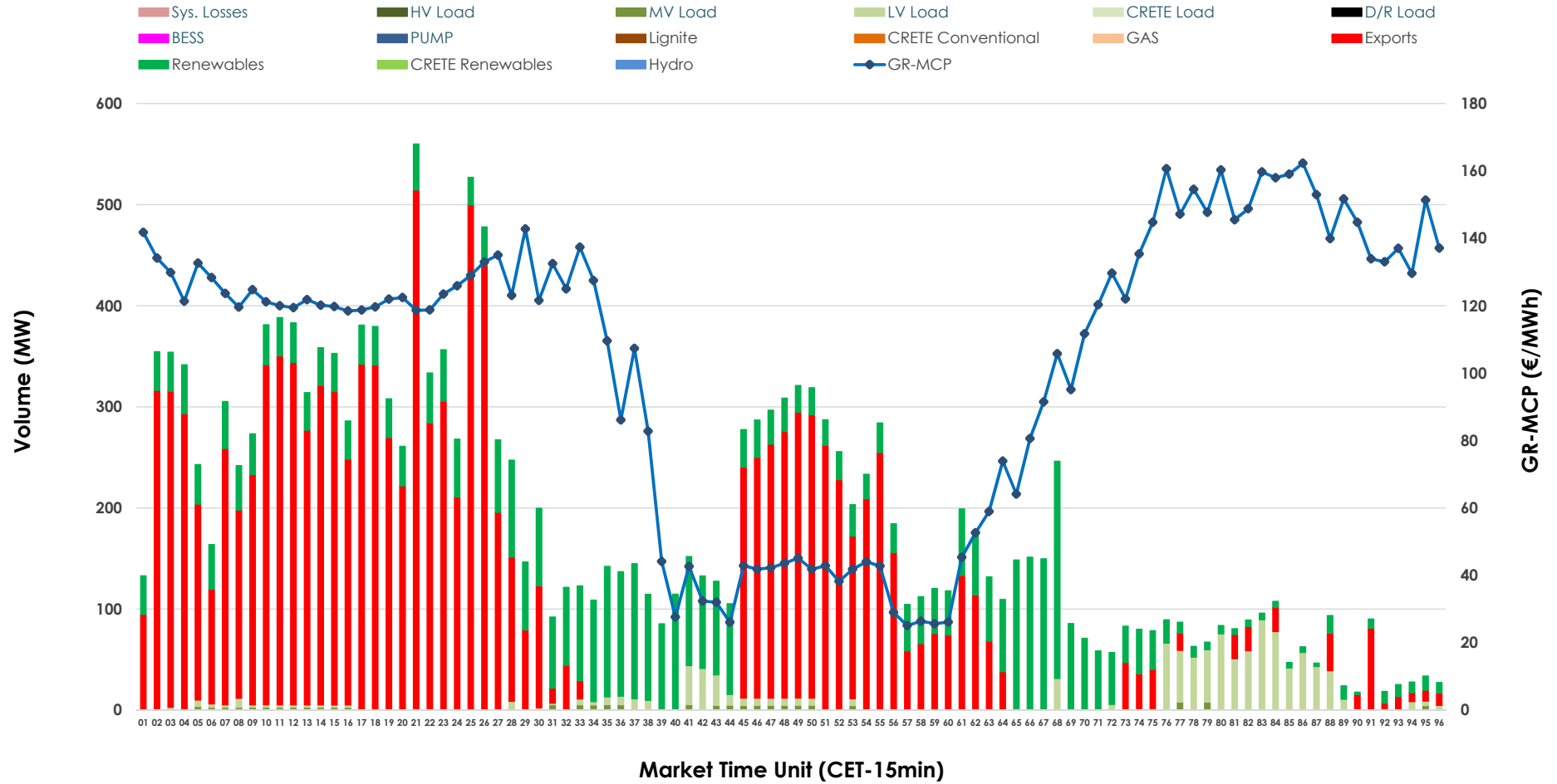


# IDA '2' Market Outlook

11.06.2026 IDA '2' Market - Sell



### 11.06.2026 IDA '2' Market - Buy



### GR Bidding Zone Weekly Figures

Delivery Day	05.06	06.06	07.06	08.06	09.06	10.06	11.06
	↗ 26%	↘ -28%	↘ -29%	↗ 74%	↗ 18%	↘ -9%	↘ -2%
<b>Avg.MCP (€/MWh)</b>	111.27	80.15	56.96	99.05	116.65	106.30	104.28
<b>Max.MCP (€/MWh)</b>	181.27	152.78	148.74	189.62	225.37	197.85	162.31
<b>Min.MCP (€/MWh)</b>	30.63	-10.82	-21.61	-1.00	-2.01	-5.84	25.13
	↘ -9%	↗ 74%	↘ -33%	↘ -2%	↗ 50%	↔ 0%	↗ 75%
<b>Tot.Vol(GWh)</b>	3.03	5.28	3.53	3.47	5.21	5.19	9.06

### Trades by Order Type

Delivery Day		05.06	06.06	07.06	08.06	09.06	10.06	11.06	
<b>Ord Price Type</b>		<b>Sell &amp; Buy Trades in (GWh) per Price Type</b>							<b>(%)</b>
<b>PPT</b>	(S)	0.000	0.000	0.000	0.000	0.000	0.000	0.000	0.00%
<b>HBD</b>	(S)	0.948	1.595	0.633	1.594	1.737	2.001	4.165	91.98%
<b>BLK</b>	(S)	0.000	0.000	0.000	0.000	0.000	0.000	0.000	0.00%
<b>CPL</b>	(S)	0.570	1.045	1.130	0.141	0.868	0.594	0.363	8.02%
<b>PPT</b>	(B)	0.000	0.000	0.000	0.000	0.000	0.000	0.000	0.00%
<b>HBD</b>	(B)	1.114	2.207	1.399	1.169	1.610	0.623	1.521	33.59%
<b>BLK</b>	(B)	0.000	0.000	0.000	0.000	0.000	0.000	0.000	0.00%
<b>CPL</b>	(B)	0.404	0.434	0.364	0.566	0.996	1.972	3.007	66.41%
		<b>Sell &amp; Buy Orders Traded per Price Type</b>							<b>(%)</b>
<b>PPT</b>	(S)	0	0	0	0	0	0	0	0.00%
<b>HBD</b>	(S)	232	393	223	305	333	306	557	100.00%
<b>BLK</b>	(S)	0	0	0	0	0	0	0	0.00%
<b>PPT</b>	(B)	0	0	0	0	0	0	0	0.00%
<b>HBD</b>	(B)	483	655	539	448	428	344	505	100.00%
<b>BLK</b>	(B)	0	0	0	0	0	0	0	0.00%

- MCP** Market Clearing Price (€/MWh)
- PPT** Priority Price-Taking
- HBD** Hybrid
- BLK** Block
- CPL** Market Coupling Flow

### Trade's Volume Mix

	Sell - MWh	Buy - MWh	
<b>Lignite</b> (0.1%)	6	0	(0.0%)
<b>Crete Conv.</b> (0.0%)	0	0	(0.0%)
<b>Gas</b> (47.4%)	2,145	0	(0.0%)
<b>Hydro</b> (2.9%)	133	0	(0.0%)
<b>Imports</b> (8.0%)	363		
<b>RES</b> (25.9%)	1,175	1,211	(26.7%)
<b>Crete RES</b> (0.0%)	0	0	(0.0%)
<b>BESS</b> (2.6%)	116	0	(0.0%)
<b>HV Load</b> (1.6%)	75	0	(0.0%)
<b>MV Load</b> (1.8%)	81	36	(0.8%)
<b>LV Load</b> (9.6%)	436	274	(6.0%)
<b>Crete Load</b> (0.0%)	0	0	(0.0%)
<b>Pumping</b> (0.0%)	0	0	(0.0%)
<b>Exports</b>		3,007	(66.4%)
<b>Sys.Losses</b> (0.0%)	0	0	(0.0%)
<b>D/R Load</b> (0.0%)	0	0	(0.0%)

