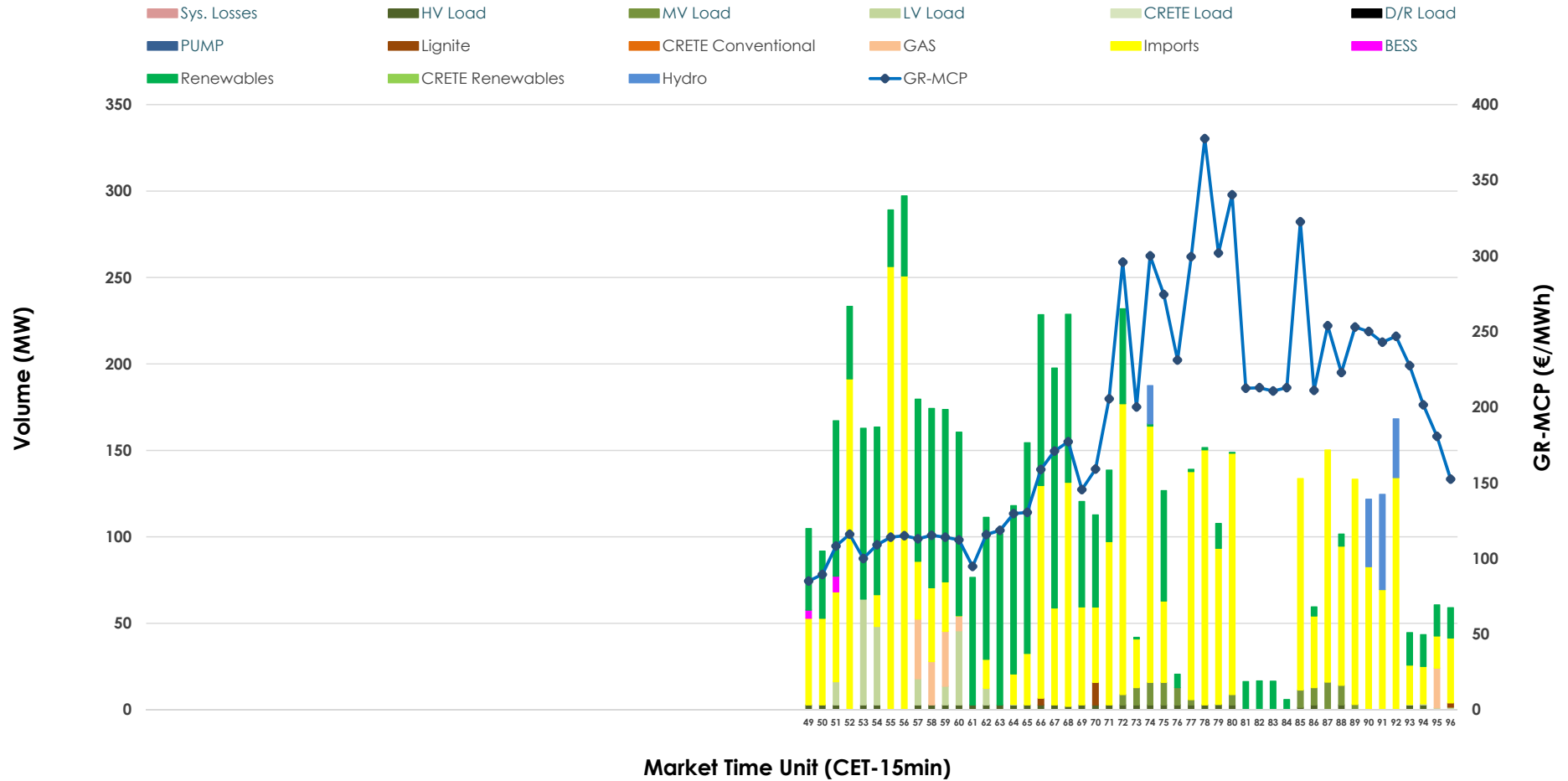


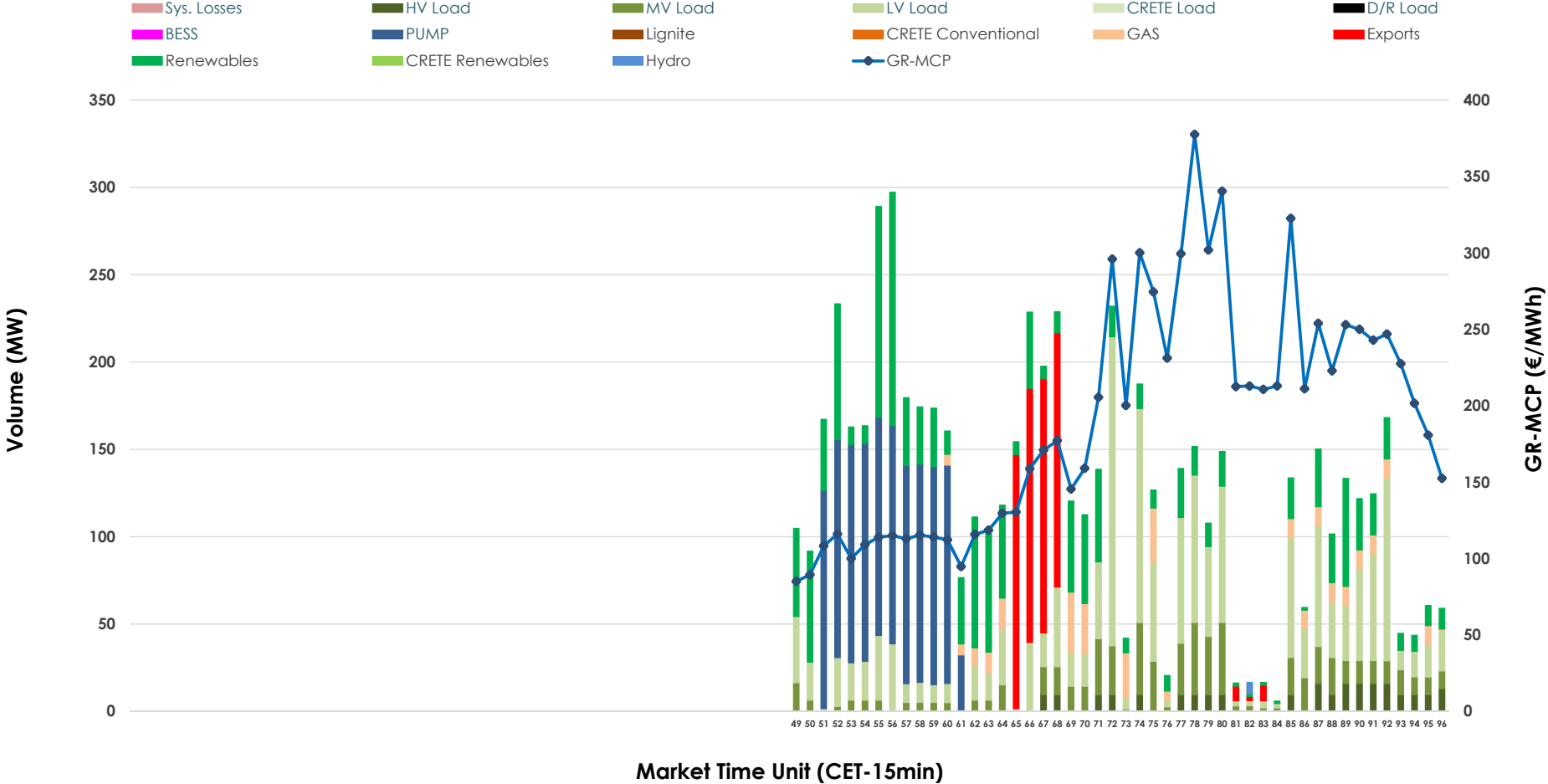


IDA '3' Market Outlook

01.07.2026 IDA '3' Market - Sell



01.07.2026 IDA '3' Market - Buy



GR Bidding Zone Weekly Figures

Delivery Day	25.06	26.06	27.06	28.06	29.06	30.06	01.07
	👇 -24%	👇 -39%	👉 7%	👇 -16%	👆 53%	👆 34%	👉 30%
Avg.MCP (€/MWh)	130.33	79.55	85.43	71.73	109.63	146.77	190.27
Max.MCP (€/MWh)	248.45	147.51	165.16	150.37	276.03	274.88	377.48
Min.MCP (€/MWh)	37.98	-6.58	-8.89	-6.23	3.00	30.33	85.03
	👇 -2%	👇 -50%	👉 16%	👇 -1%	👆 127%	👇 -30%	👉 27%
Tot.Vol(GWh)	2.69	1.33	1.54	1.53	3.47	2.43	3.10

Trades by Order Type

Delivery Day		25.06	26.06	27.06	28.06	29.06	30.06	01.07	
Ord Price Type		Sell & Buy Trades in (GWh) per Price Type							(%)
PPT	(S)	0.000	0.000	0.000	0.000	0.000	0.000	0.000	0.00%
HBD	(S)	1.084	0.492	0.743	0.493	1.725	1.059	0.715	46.12%
BLK	(S)	0.000	0.000	0.000	0.000	0.000	0.000	0.000	0.00%
CPL	(S)	0.260	0.175	0.029	0.270	0.009	0.157	0.835	53.88%
PPT	(B)	0.000	0.000	0.000	0.000	0.000	0.000	0.000	0.00%
HBD	(B)	0.928	0.463	0.551	0.715	0.971	1.167	1.399	90.29%
BLK	(B)	0.000	0.000	0.000	0.000	0.000	0.000	0.000	0.00%
CPL	(B)	0.416	0.204	0.221	0.048	0.763	0.049	0.150	9.71%
		Sell & Buy Orders Traded per Price Type							(%)
PPT	(S)	0	0	0	0	0	0	0	0.00%
HBD	(S)	273	144	199	132	195	148	167	100.00%
BLK	(S)	0	0	0	0	0	0	0	0.00%
PPT	(B)	0	0	0	0	0	0	0	0.00%
HBD	(B)	241	206	149	172	202	337	346	100.00%
BLK	(B)	0	0	0	0	0	0	0	0.00%

- MCP** Market Clearing Price (€/MWh)
- PPT** Priority Price-Taking
- HBD** Hybrid
- BLK** Block
- CPL** Market Coupling Flow

Trade's Volume Mix

	Sell - MWh	Buy - MWh	
Lignite (0.3%)	5	0	(0.0%)
Crete Conv. (0.0%)	0	0	(0.0%)
Gas (2.0%)	31	69	(4.5%)
Hydro (2.4%)	37	2	(0.1%)
Imports (53.9%)	835		
RES (34.6%)	536	373	(24.1%)
Crete RES (0.0%)	0	0	(0.0%)
BESS (0.2%)	3	0	(0.0%)
HV Load (1.5%)	23	57	(3.7%)
MV Load (1.8%)	28	156	(10.1%)
LV Load (3.3%)	51	422	(27.2%)
Crete Load (0.0%)	0	0	(0.0%)
Pumping (0.0%)	0	321	(20.7%)
Exports		150	(9.7%)
Sys.Losses (0.0%)	0	0	(0.0%)
D/R Load (0.0%)	0	0	(0.0%)

